

INDEX OF SHEETS

SHEET NO.	TITLE PAGE	REVISIONS
1	TITLE PAGE	
2	TYPICAL CROSS-SECTION OF IMPROVEMENT	2 1/2" CRUSHED GRAVEL MIXED-IN-PLACE SURFACE COURSE WITH REFINED TAR (ITEMS 25 & 30)
3	BANKING AND WIDENING TABLES	
4-9	PLAN AND PROFILE STA.	
10	STANDARD STRUCTURE SHEET	5-28 PIPE CULVERTS
11	"	5-30 GUARD RAIL
12	"	5-40 BARRICADES ETC
13	"	5-41 ROUNDING OF SLOPES
14-31	CROSS SECTIONS	

STANDARD STRUCTURE SHEETS APPROVED BY THE CHIEF ENGINEER

5-28 July 11, 1933  
5-30 Aug 13, 1933

STATE OF VERMONT  
STATE HIGHWAY DEPARTMENT

PLAN AND PROFILE OF PROPOSED  
STATE HIGHWAY

FEDERAL AID PROJECT  
SECONDARY

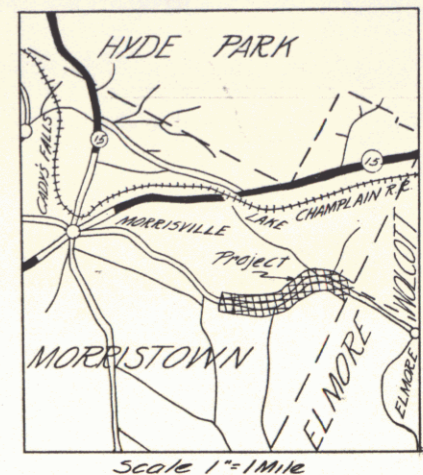
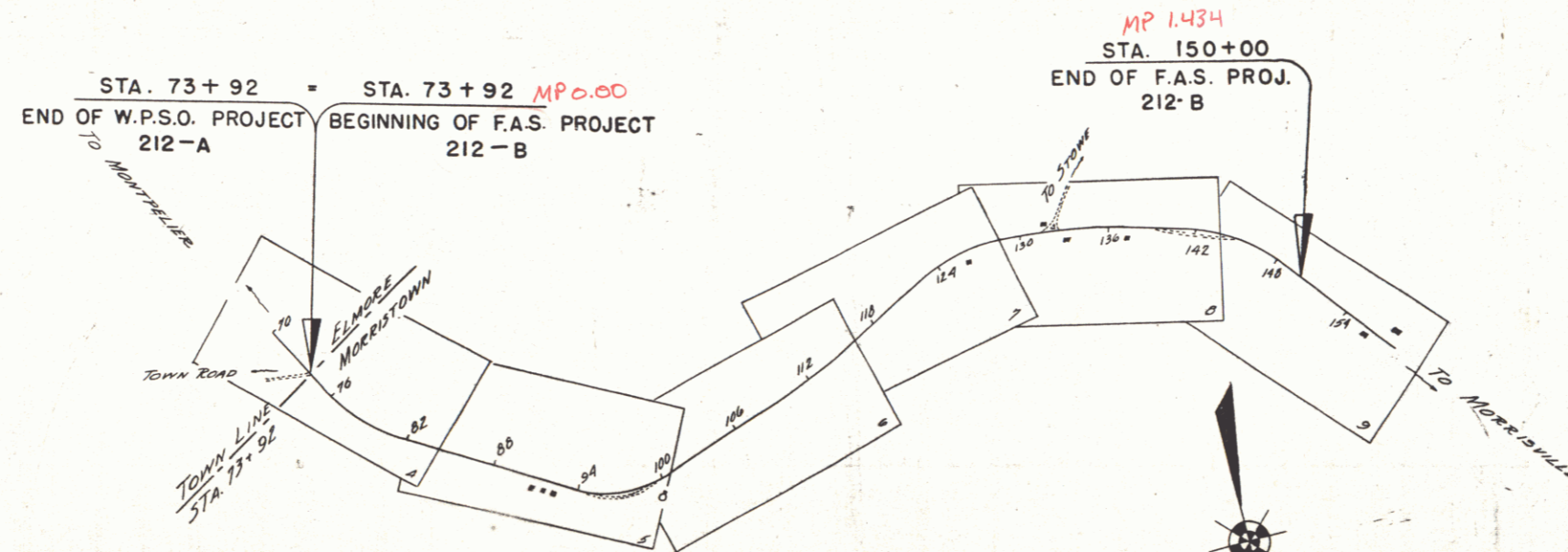
TOWN OF MORRISTOWN

MONTPELIER-MORRISVILLE ROAD

BEGINNING AT THE ELMORE - MORRISTOWN TOWN LINE & EXTENDING

1.433 MI. WESTERLY.

LENGTH OF PROJECT 7568.2 FT. = 1.433 MI.



FED. ROAD DIST. NO.	STATE	FED. AID PROJ. NO.	FISCAL YEAR	SHEET NO.	TOTAL SHEETS
9	VT.	212-B	1938	1	31

CONVENTIONAL SIGNS

- COUNTY LINE
- TOWN LINE
- FENCE LINE
- STONE WALL
- UNFENCED PROPERTY
- GUARD RAIL
- TRAVELED WAY
- RAILROAD
- RETAINING WALL
- CENTER LINE
- SURVEY LINE
- CULVERT
- DROP INLET
- TROLLEY POLE
- POWER POLE
- TELEPHONE POLE
- TREES
- HEDGE

- GROUND ELEVATION
- GRADE ELEVATION

- CURVE DATA
- DEFLECTION ANGLE
  - DEGREE OF CURVE
  - RADIUS OF CURVE
  - TANGENT DISTANCE
  - LENGTH OF CURVE
  - EXTERNAL DISTANCE
  - POINT OF INTERSECTION
  - POINT OF CURVE
  - POINT OF TANGENT
  - POINT ON TANGENT

SCALES

TITLE	1" = 600'
TYPICAL	1" = 2'
PLAN	1" = 50'
PROFILE	HOR. 1" = 50'
CROSS SECTION	1" = 5'

These plans are subject to such revisions as may be required by the Bureau of Public Roads or the Commissioner of Highways.  
Construction is to be carried on in accordance with the plans & Standard Road & Bridge Specifications of 1936 as approved Dec. 29, 1936 by the Bureau of Public Roads including all subsequent approved revisions and such revised specifications & special provisions as are submitted with the plans.

APPROVED: Nov. 1 1937  
*H. E. August*  
COMMISSIONER OF HIGHWAYS  
SUBMITTED BY ORDER OF THE STATE HIGHWAY BOARD

FEB 29 1980

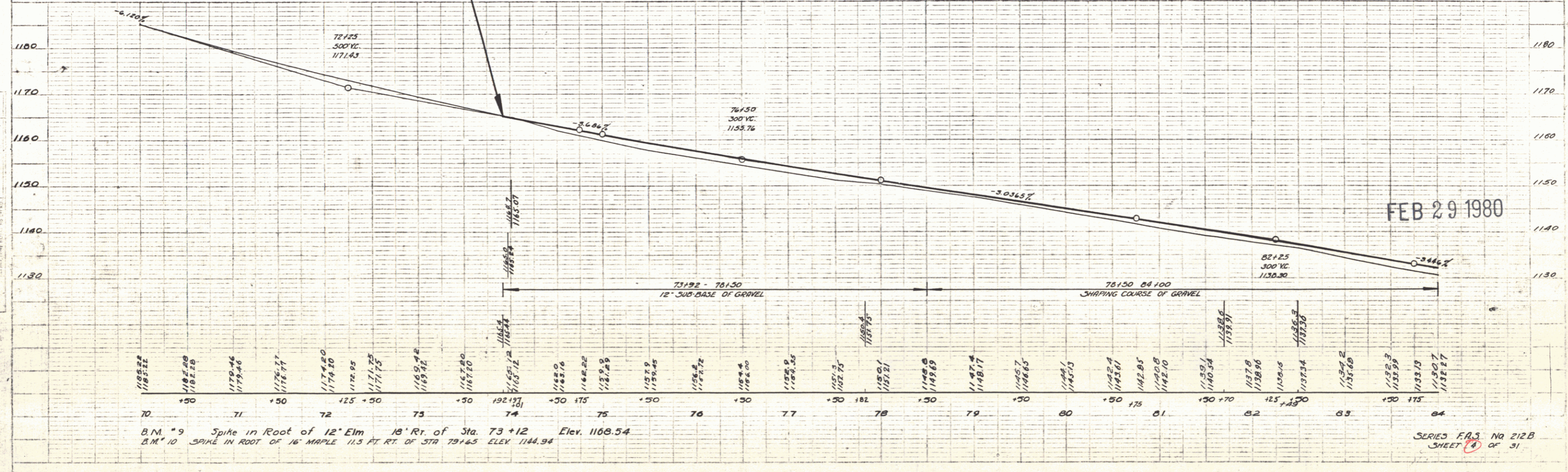
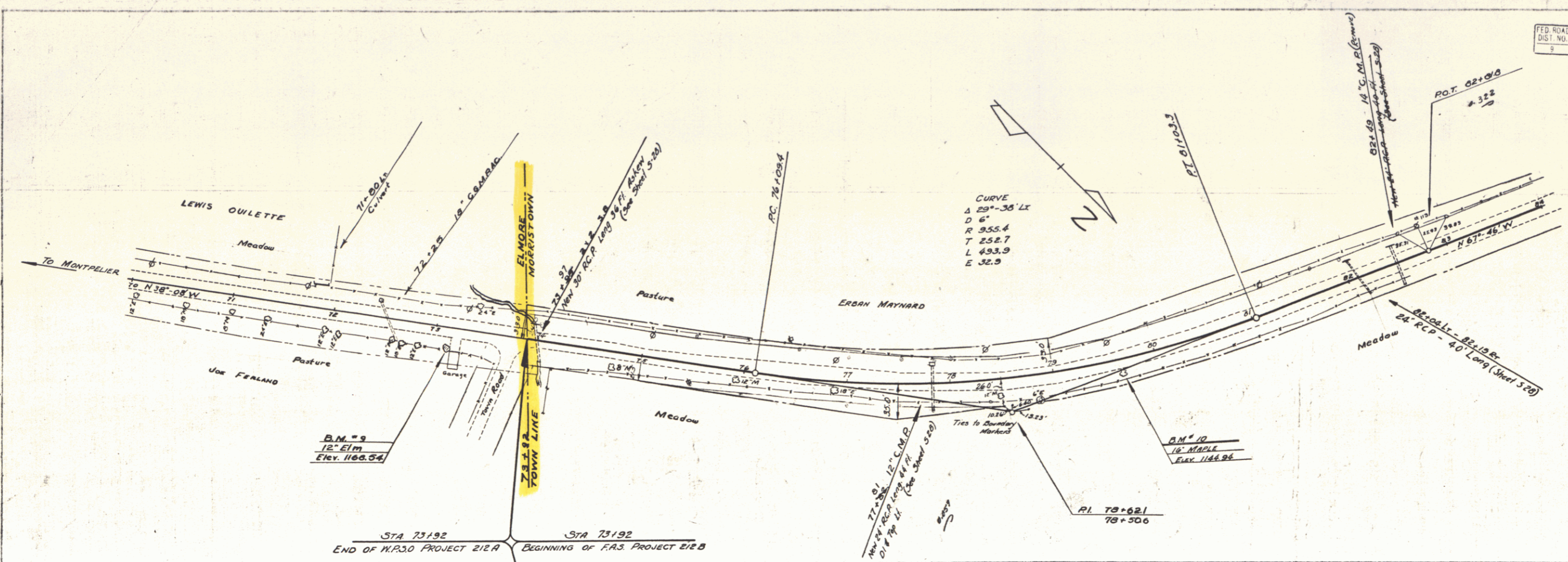
RECOMMENDED [Signature]  
DISTRICT ENGINEER BUREAU OF PUBLIC ROADS  
RECOMMENDED FOR APPROVAL [Signature]  
CHIEF ENGINEER BUREAU OF PUBLIC ROADS  
APPROVED [Signature]  
DIRECTOR - BUREAU OF PUBLIC ROADS

Approved Nov. 1, 1937  
*H. W. Hammett*  
District Highway Comm.

Correct Oct. 29, 1938  
*A. W. Hammett*  
Road Engineer

SERIES F.A.S. NO. 212-B FILED  
SHEET (1) OF 31

FED. ROAD DIST. NO.	STATE	F.A.S. PROJ. NO.	FISCAL YEAR	SHEET NO.	TOTAL SHEETS
2	Vt.	212B	1978	4	51



PLAN  
 PAID TO  
 NOTE BOOK  
 BY F.A.S. DISTRICT

MARVIN 7-37

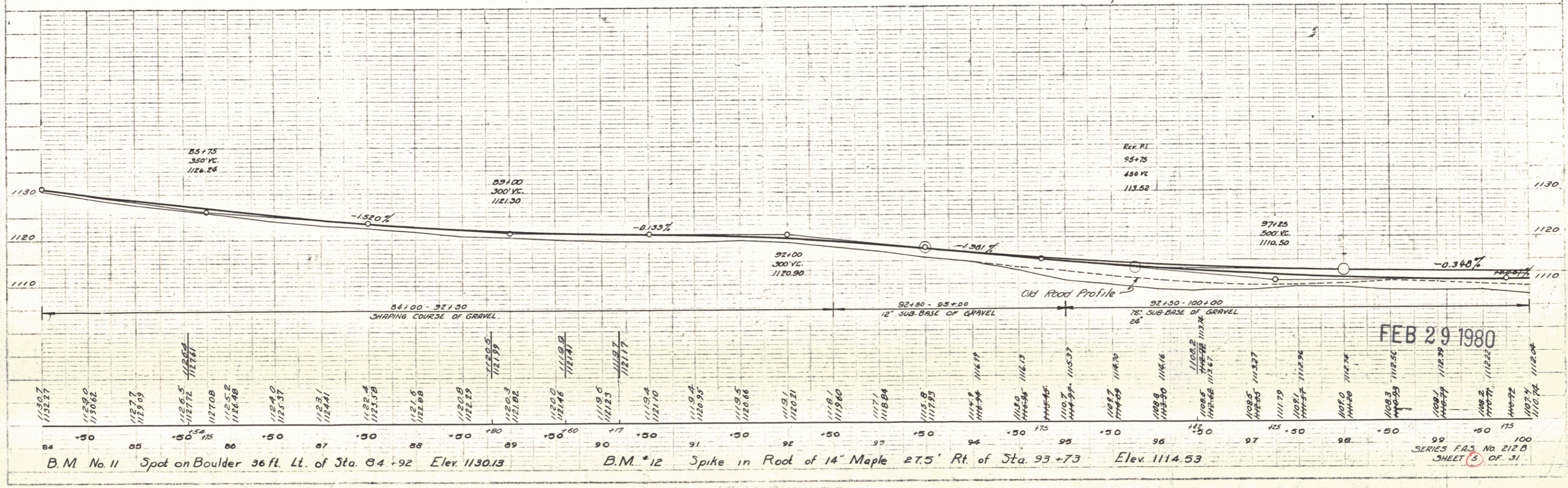
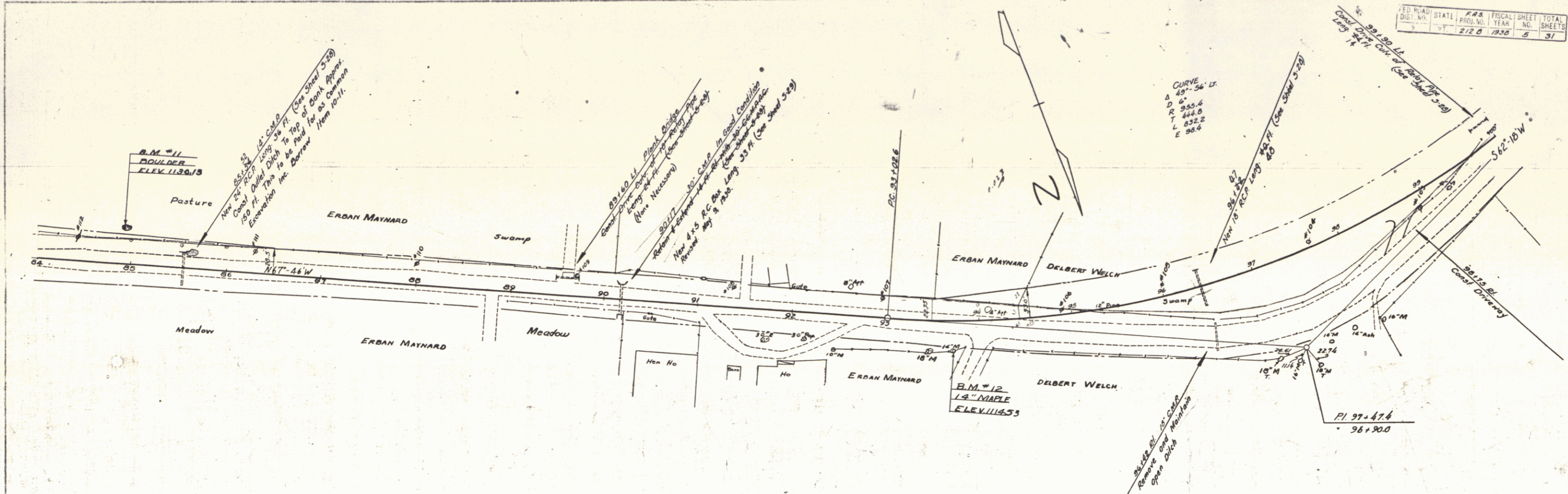
B.M. "9" Spike in Root of 12" Elm 18' Rt. of Sta. 73+12 Elev. 1169.54  
 B.M. "10" SPIKE IN ROOT OF 16" MAPLE 11.5 FT. RT. OF STA 73+65 ELEV. 1144.94

FEB 29 1980

SERIES F.A.S. No 212B  
 SHEET 4 OF 51

FED. ROAD DIST. NO.	STATE	F.A.S. PROJ. NO.	FISCAL YEAR	SHEET NO.	TOTAL SHEETS
212 B	VT	212 B	1958	5	31

FILED  
 BARRETT  
 NELSON  
 7-37  
 TRACED

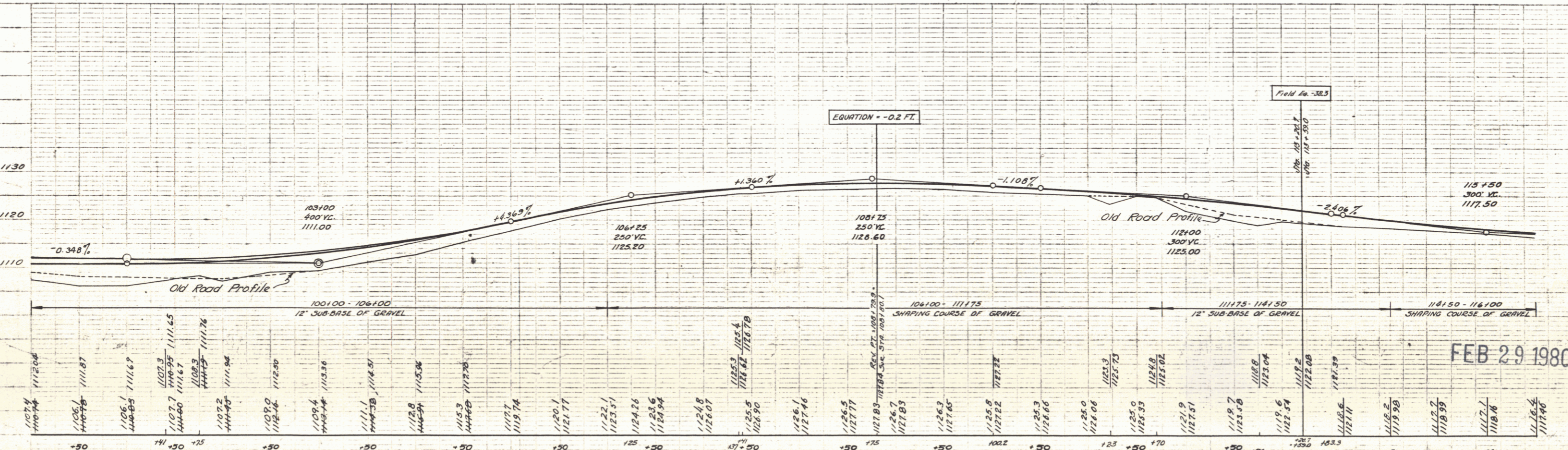
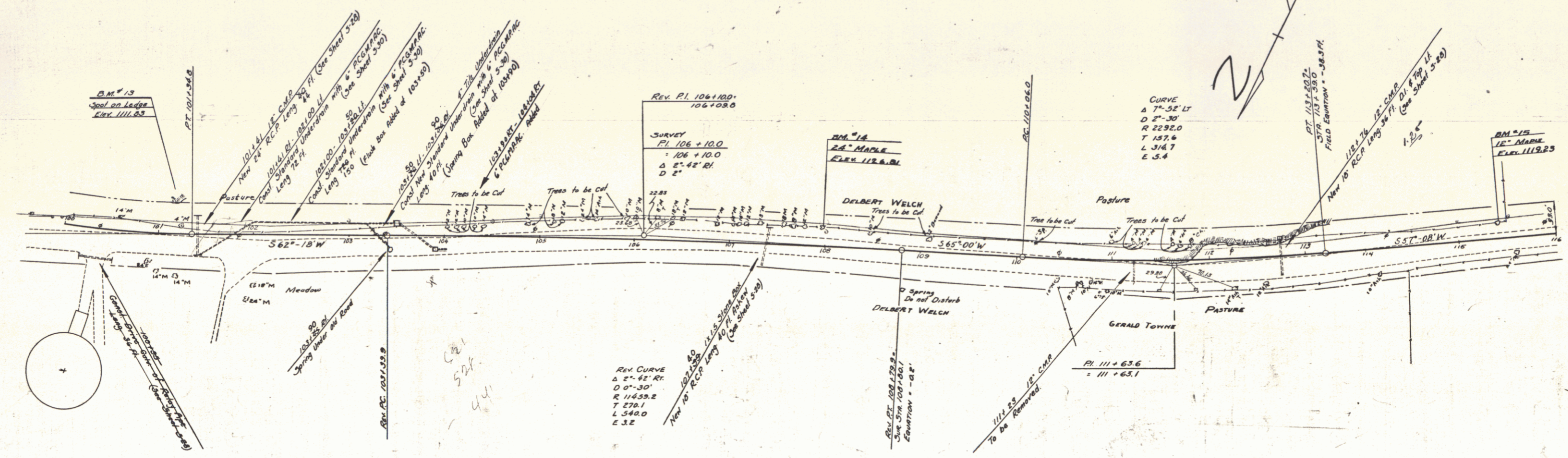


FILED  
 BARRETT  
 NELSON  
 7-37  
 TRACED

FEB 29 1980

SERIES F.A.S. No. 212 B  
 SHEET 5 OF 31

BARRETT NELSON  
7-37  
7-37



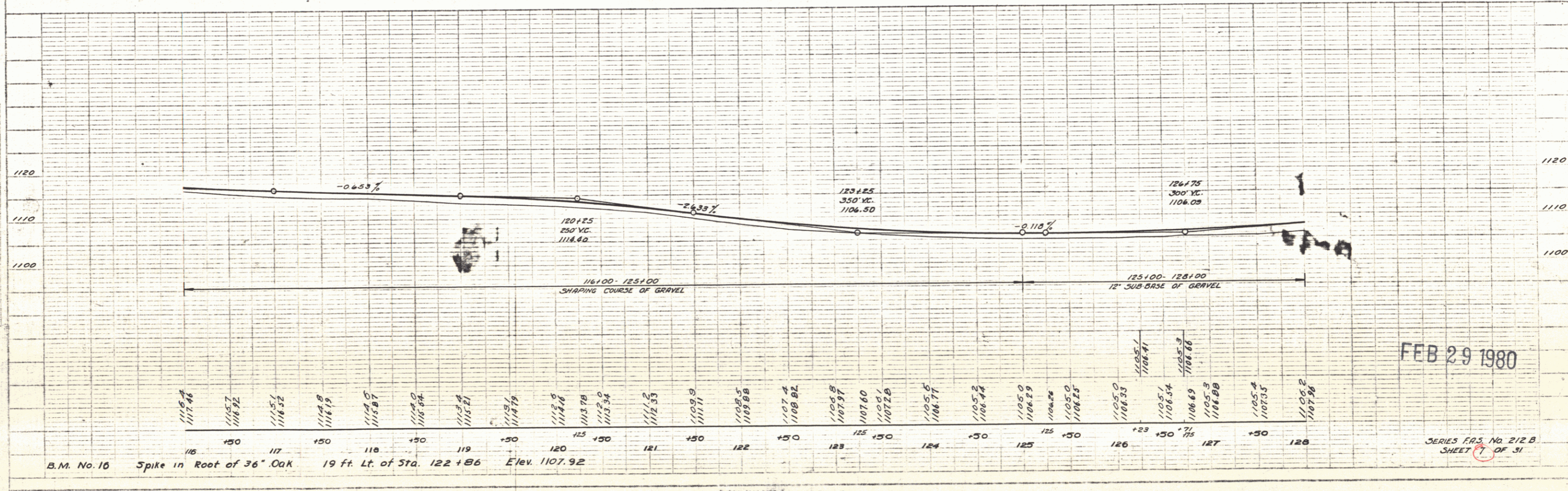
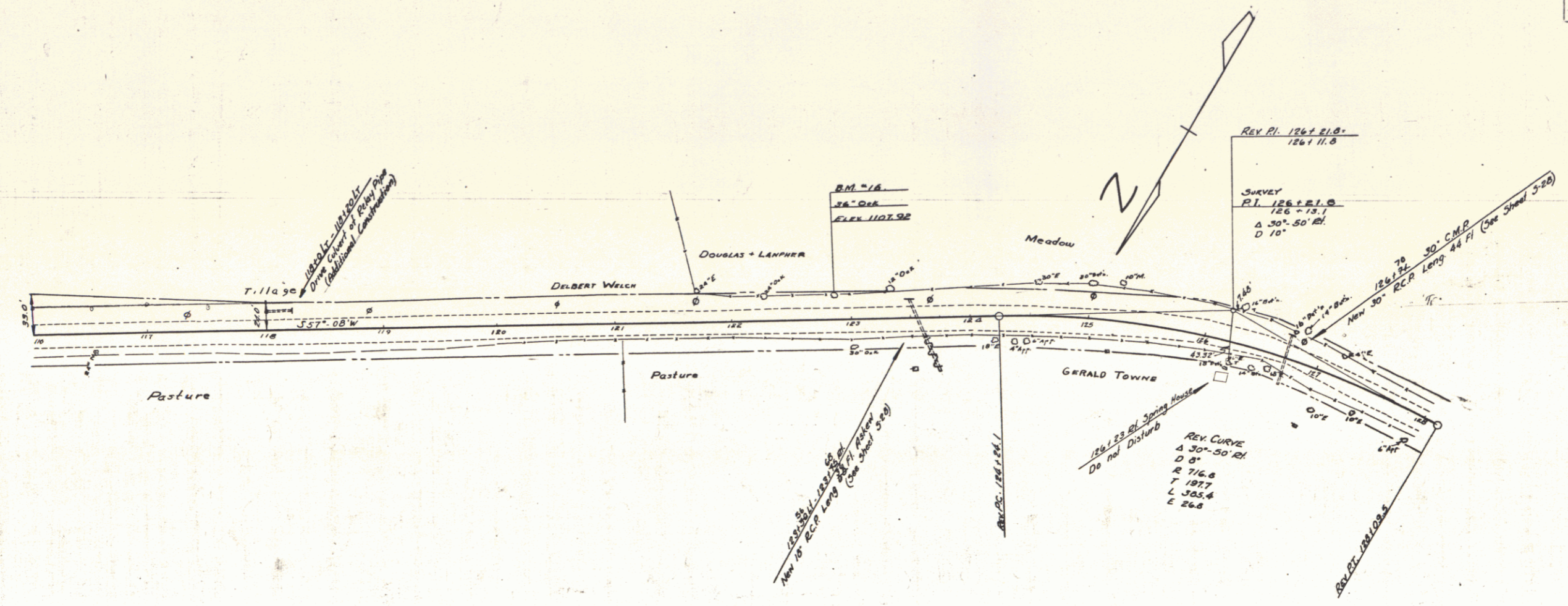
B.M. No. 13 Spot on Ledge 32 ft. Lt. of Sta. 101+20 Elev. 1111.83  
 B.M. No. 14 Spike in Root of 24" Maple 20' Lt. of Sta. 108+00 Elev. 1126.81  
 B.M. No. 15 Spike in Trunk of 12" Maple 15.5' Lt. of Sta. 115+40 Elev. 1119.23

FEB 29 1980

SERIES PAS NO 212 R  
 SHEET 6 OF 31

GARRETT NELSON  
 912  
 7-37  
 FILED  
 NOTE BOOK  
 TRAKED TO  
 NELSON

MARON  
 7-37  
 FILED  
 NOTE BOOK  
 TRAKED TO  
 MARON



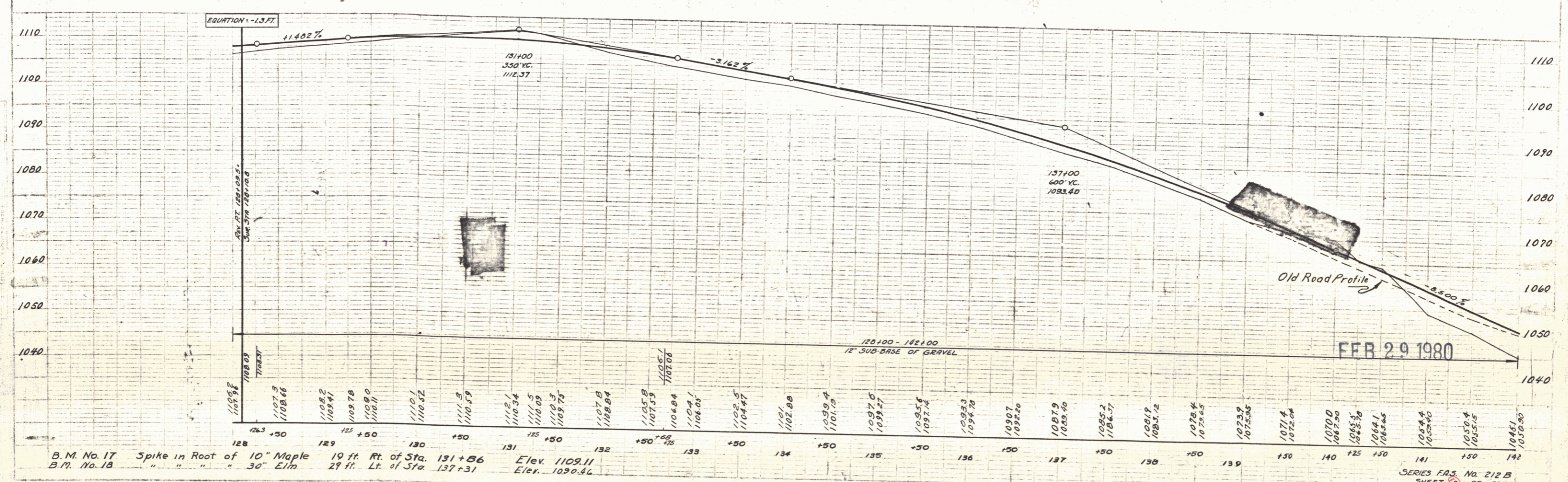
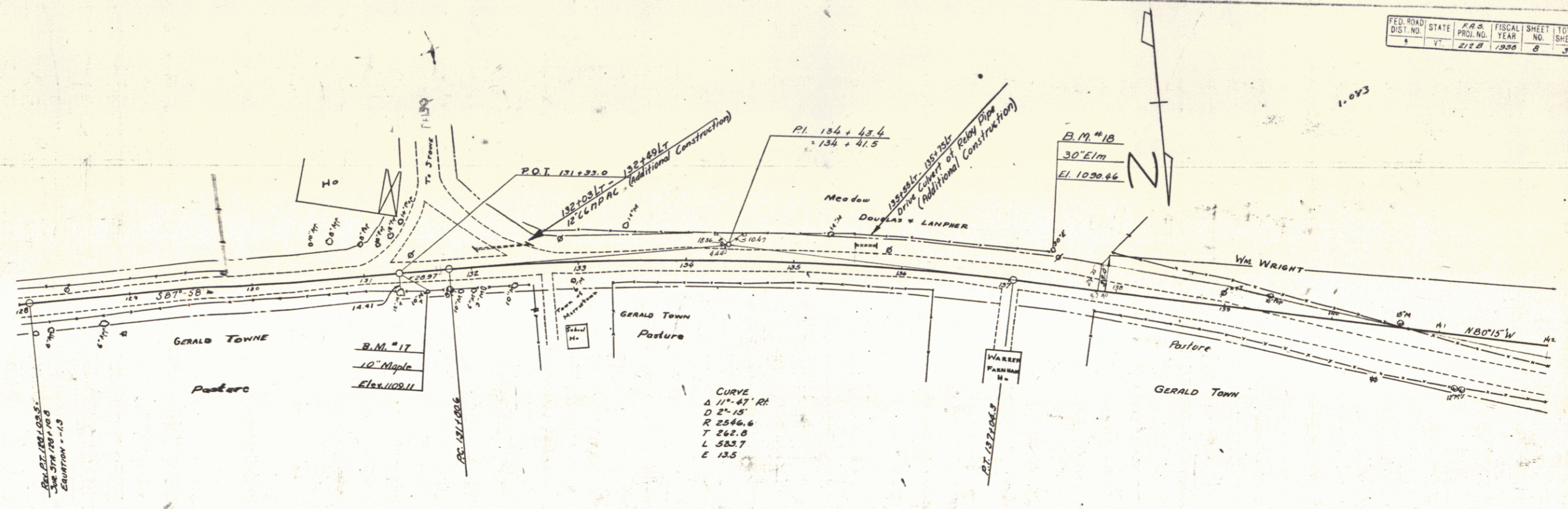
B.M. No. 16 Spike in Root of 36° Oak 19 ft. Lt. of Sta. 122+86 Elev. 1107.92

FEB 29 1980

SERIES E.O.S. NO. 212B SHEET 7 OF 31

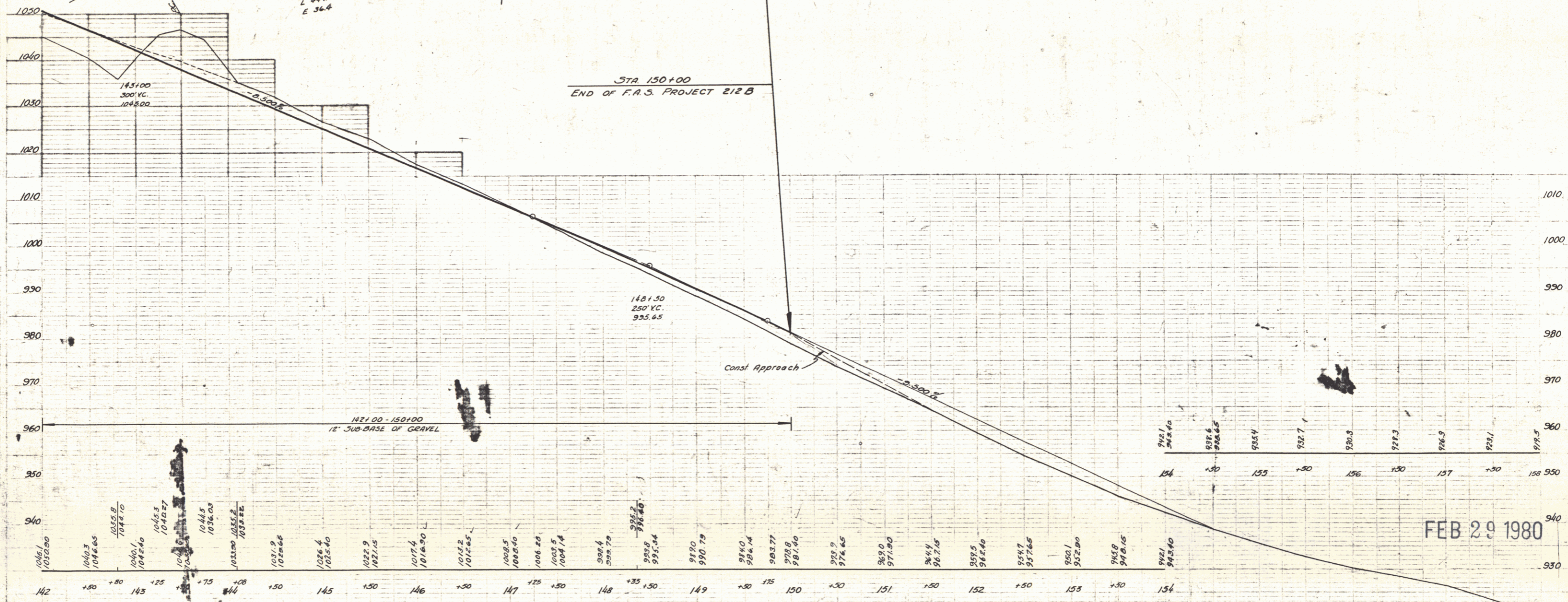
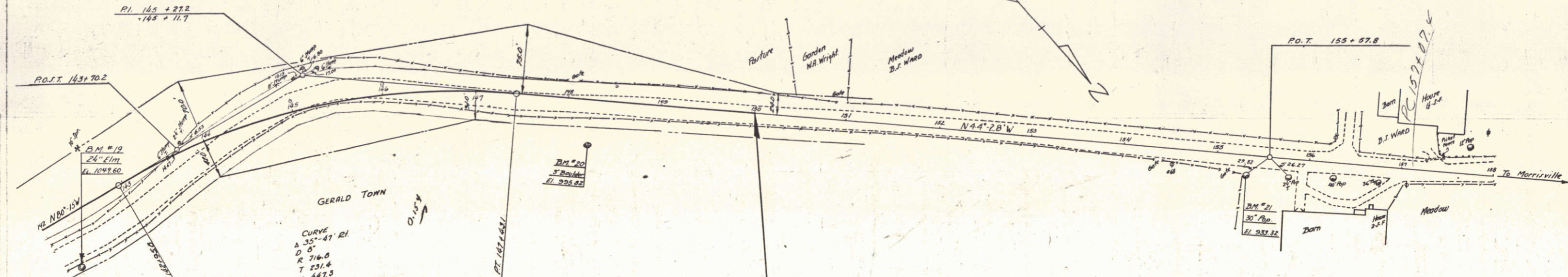
FED. ROAD DIST. NO.	STATE	P.A.S. PROJ. NO.	FISCAL YEAR	SHEET NO.	TOTAL SHEETS
1	VT	212 B	1980	8	31

PLAN  
 DATE: 2/27/80  
 DRAWN BY: WARDON  
 CHECKED BY: NELSON  
 SCALE: 1" = 40'



B.M. No. 17 Spike in Root of 10" Maple 19 ft. Rt. of Sta. 131+86 Elev. 1109.11  
 B.M. No. 18 " " " " 30" Elm 29 ft. Lt. of Sta. 137+31 Elev. 1090.46

SERIES P.A.S. No. 212 B  
SHEET 8 OF 31



B.M. #19 S.I.T. 24" Elm. P.I. 142+16 Elev. 1049.60  
 B.M. #20 Spot on Boulder at P.I. 148+23 Elev. 995.82  
 B.M. #21 S.I.R. 30" Pop. 18 P.I. 153+34 Elev. 933.32

FEB 29 1980

SERIES F.A.S. No. 212 B  
SHEET 9 OF 31