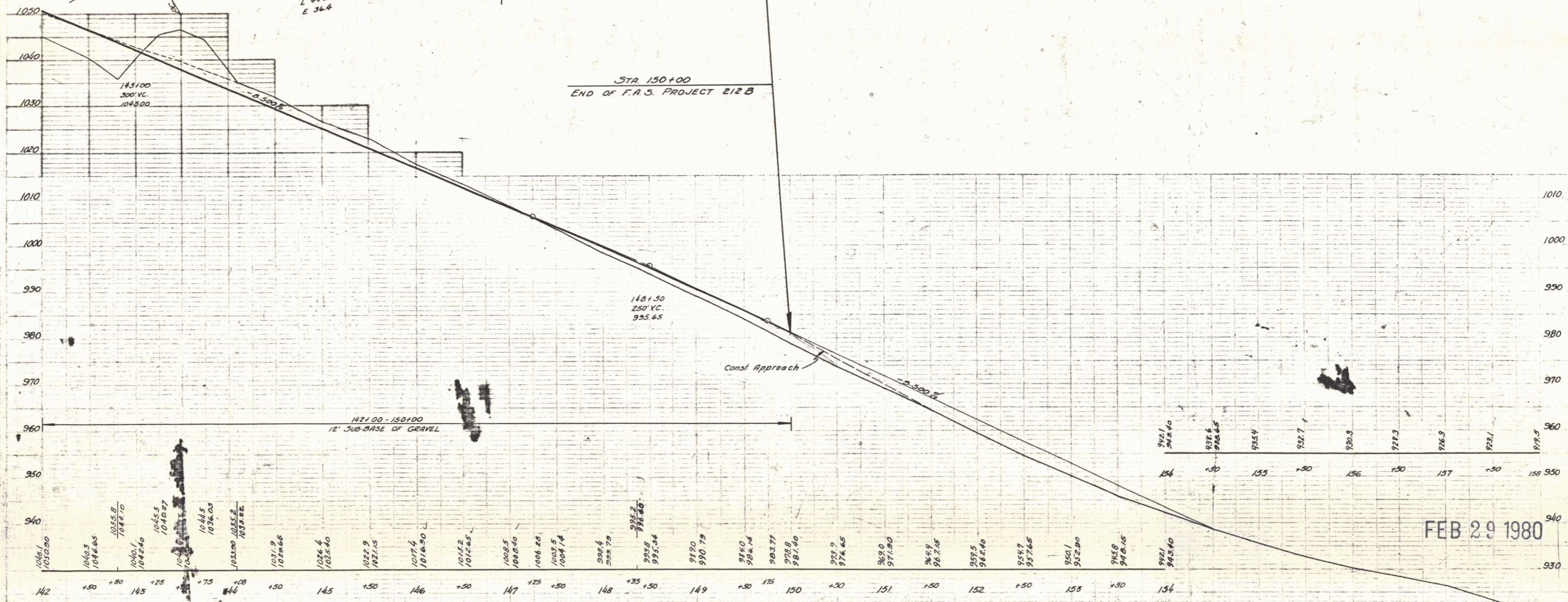
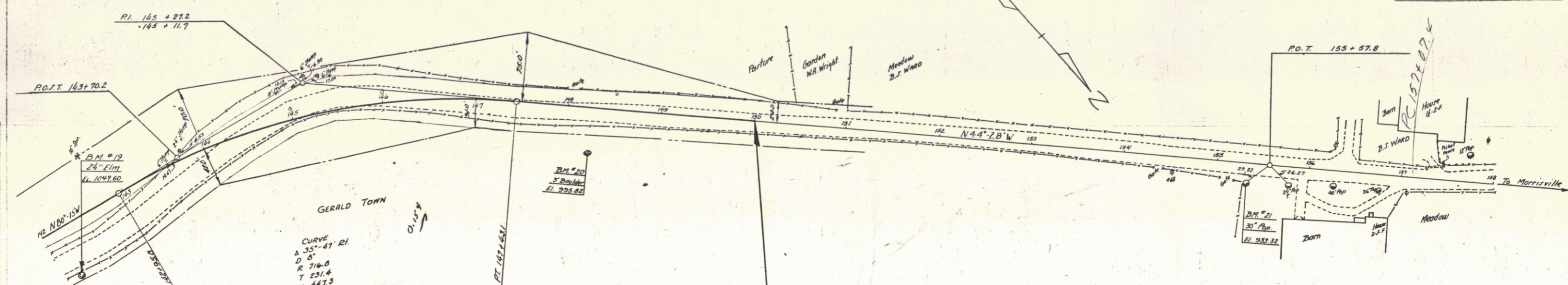


FED. ROAD DIST. NO.	STATE	F.A.S. PROJ. NO.	FISCAL YEAR	SHEET NO.	TOTAL SHEETS
212 B	VT	1520	8	31	31



B.M. #19 S.I.T. 24" Elm. P.I. 142+16 Elev. 1049.60
 B.M. #20 Spot on Boulder at P.I. 148+23 " 995.82
 B.M. #21 S.I.R. 30' Pop. 18' P.I. 153+34 Elev. 933.32

FEB 29 1980

SERIES F.A.S. No. 212 B
SHEET 31 OF 31