

INDEX OF SHEETS

SHEET NO.	TITLE PAGE	REVISIONS
1	TITLE PAGE	
2	TYPICAL CROSS-SECTION OF IMPROVEMENT	2 1/2" CRUSHED GRAVEL MIXED-IN-PLACE SURFACE COURSE WITH REFINED TAR (ITEMS 25 & 30)
3	BANKING AND WIDENING TABLES	
4-9	PLAN AND PROFILE STA.	
10	STANDARD STRUCTURE SHEET	5-28 PIPE CULVERTS
11	"	5-30 GUARD RAIL
12	"	5-40 BARRICADES ETC
13	"	5-41 ROUNDING OF SLOPES
14-31	CROSS SECTIONS	

STANDARD STRUCTURE SHEETS APPROVED BY THE CHIEF ENGINEER

5-28 July 11, 1933  
5-30 Aug 13, 1933

STATE OF VERMONT  
STATE HIGHWAY DEPARTMENT

PLAN AND PROFILE OF PROPOSED  
STATE HIGHWAY

FEDERAL AID PROJECT  
SECONDARY

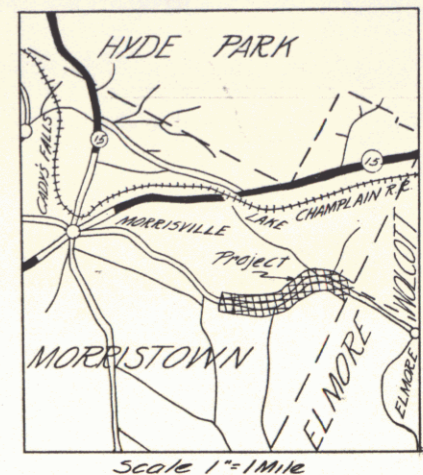
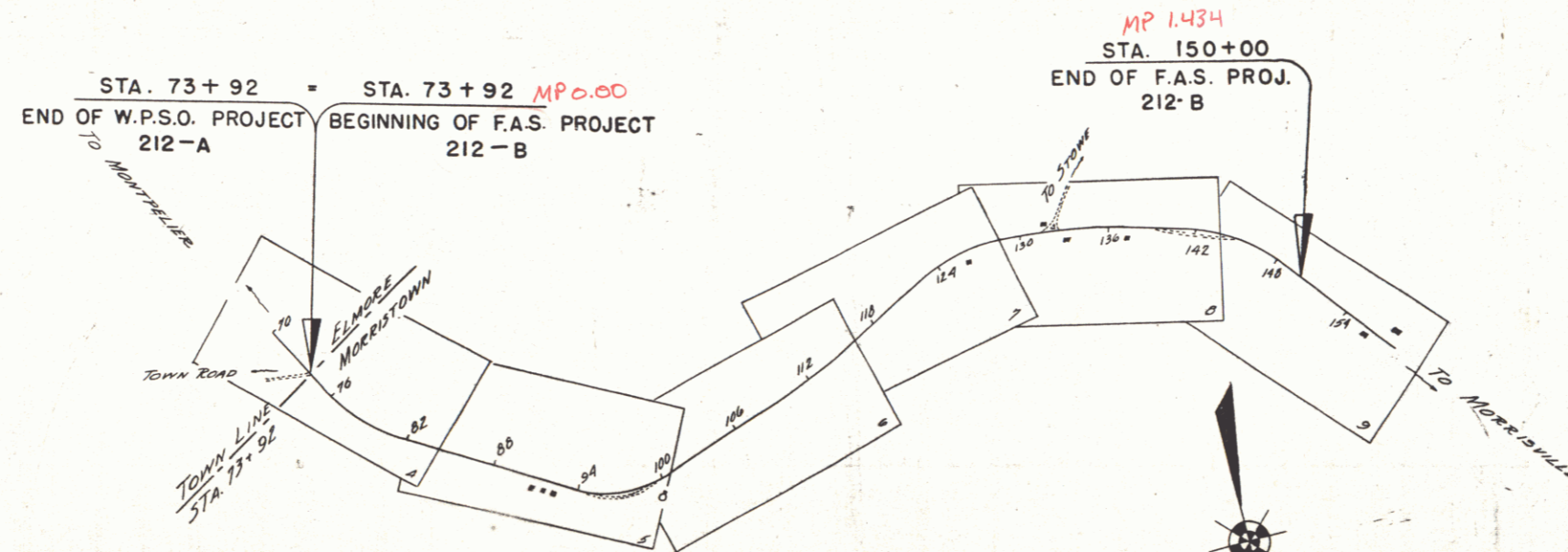
TOWN OF MORRISTOWN

MONTPELIER-MORRISVILLE ROAD

BEGINNING AT THE ELMORE - MORRISTOWN TOWN LINE & EXTENDING

1.433 MI. WESTERLY.

LENGTH OF PROJECT 7568.2 FT. = 1.433 MI.



FED. ROAD DIST. NO.	STATE	FED. AID PROJ. NO.	FISCAL YEAR	SHEET NO.	TOTAL SHEETS
9	VT.	212-B	1938	1	31

CONVENTIONAL SIGNS

COUNTY LINE	GROUND ELEVATION
TOWN LINE	FENCE LINE
STONE WALL	GRADE ELEVATION
UNFENCED PROPERTY	
GUARD RAIL	
TRAVELED WAY	
RAILROAD	
RETAINING WALL	
CENTER LINE	
SURVEY LINE	
CULVERT	
DROP INLET	
TROLLEY POLE	
POWER POLE	
TELEPHONE POLE	
TREES	
HEDGE	

CURVE DATA

DEFLECTION ANGLE	Δ
DEGREE OF CURVE	D
RADIUS OF CURVE	R
TANGENT DISTANCE	T
LENGTH OF CURVE	L
EXTERNAL DISTANCE	E
POINT OF INTERSECTION	P. I.
POINT OF CURVE	P. C.
POINT OF TANGENT	P. T.
POINT ON TANGENT	P. O. T.

SCALES

TITLE	1" = 600'
TYPICAL	1" = 2'
PLAN	1" = 50'
PROFILE	HOR. 1" = 50'
CROSS SECTION	1" = 5'

These plans are subject to such revisions as may be required by the Bureau of Public Roads or the Commissioner of Highways.  
Construction is to be carried on in accordance with the plans & Standard Road & Bridge Specifications of 1936 as approved Dec. 29, 1936 by the Bureau of Public Roads including all subsequent approved revisions and such revised specifications & special provisions as are submitted with the plans.

APPROVED: Nov. 1 1937  
*H. E. August*  
COMMISSIONER OF HIGHWAYS  
SUBMITTED BY ORDER OF THE STATE HIGHWAY BOARD

FEB 29 1980

RECOMMENDED [Signature] DISTRICT ENGINEER BUREAU OF PUBLIC ROADS  
RECOMMENDED FOR APPROVAL [Signature] CHIEF ENGINEER BUREAU OF PUBLIC ROADS  
APPROVED [Signature] DIRECTOR - BUREAU OF PUBLIC ROADS

Approved Nov. 1, 1937 District Highway Comm. *H. W. Hammett*  
Correct Oct. 29, 1938 *A. W. Hammett* Road Engineer  
SERIES F.A.S. NO. 212-B FILED SHEET (1) OF 31