

Construct Drives 26+88 Lt.

REMOVAL AND DISPOSAL OF PRESENT GUARD RAIL Rt. App 1+26 - App 1+74 App 1+26 - App 1+74

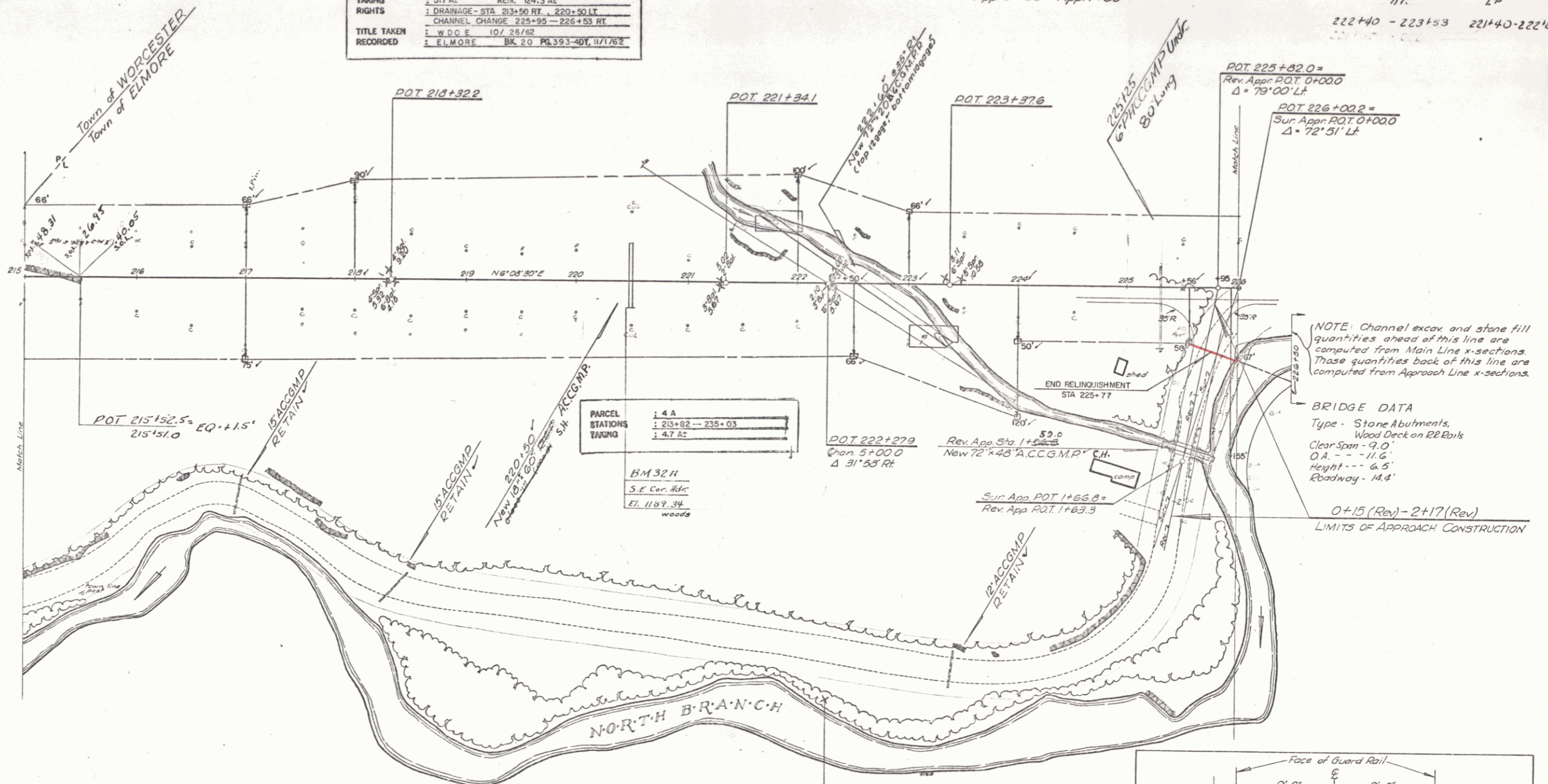
CONSTRUCT APPROACH Rt. 225+82

TWO CABLE GUARD RAIL Lt. 221+20 - 222+80 215+00 - 216+00 0+17 App - 1+71 App 222+93 - 223+04 1+40 App - 1+72 App (226+00 Lt.)

STONE FILL FOR SLOPE PROTECTION Lt. App 0+38 - App 1+75 Rt.

UNCLASSIFIED CHANNEL EXCAVATION Lt. App 0+55 - App 1+80 Rt. TREATED TIMBER CURB (Pave Shoulder F.W.) Rt. 222+40 - 223+53 221+40 - 222+89

| | | | |
|-------------|---|------|-----------------|
| PARCEL | 4 A, B | STA | 213+82 - 235+03 |
| GRANTOR | ANTONETTE BRESCIA | | |
| TAKING | 5.7 AS | REH. | 04.3 AS |
| RIGHTS | DRAINAGE - STA. 213+50 RT. - 220+50 LT. | | |
| | CHANNEL CHANGE 225+95 - 226+53 RT. | | |
| TITLE TAKEN | W.D.O.E. 10/26/62 | | |
| RECORDED | ELMORE BK 20 PL 393-40T, 11/17/62 | | |



| | | | |
|-------------|---|------|-----------------|
| PARCEL | 4 A | STA | 213+82 - 235+03 |
| STATIONS | TAKING | | |
| | 5.7 AS | REH. | 04.3 AS |
| | DRAINAGE - STA. 213+50 RT. - 220+50 LT. | | |
| | CHANNEL CHANGE 225+95 - 226+53 RT. | | |
| TITLE TAKEN | W.D.O.E. 10/26/62 | | |
| RECORDED | ELMORE BK 20 PL 393-40T, 11/17/62 | | |

BM 32 H
S.E. Cor. Mfr
EL. 1187.34
woods

NOTE: Channel excav. and stone fill quantities ahead of this line are computed from Main Line x-sections. Those quantities back of this line are computed from Approach Line x-sections.

BRIDGE DATA
Type - Stone Abutments,
Wood Deck on RR Rails
Clear Span - 9.0'
O.A. - 11.6'
Height - 6.5'
Roadway - 14.4'

0+15 (Rev) - 2+17 (Rev)
LIMITS OF APPROACH CONSTRUCTION

VERMONT ROUTE 12 RELINQUISHMENT

TOWN OF ELMORE

BEG. STA. 212+15 275 RT. - END STA. 225+77 57 RT
RECORDED: JULY 9, 1964 BK. HIGHWAY PG. 25 - 26

BM #32
S.I.R. 15' Balsam
U.S. EL. 1142.71

