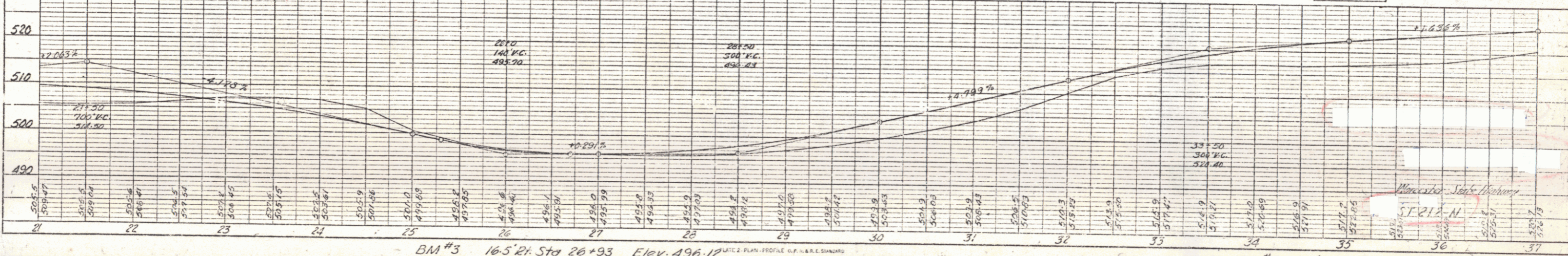
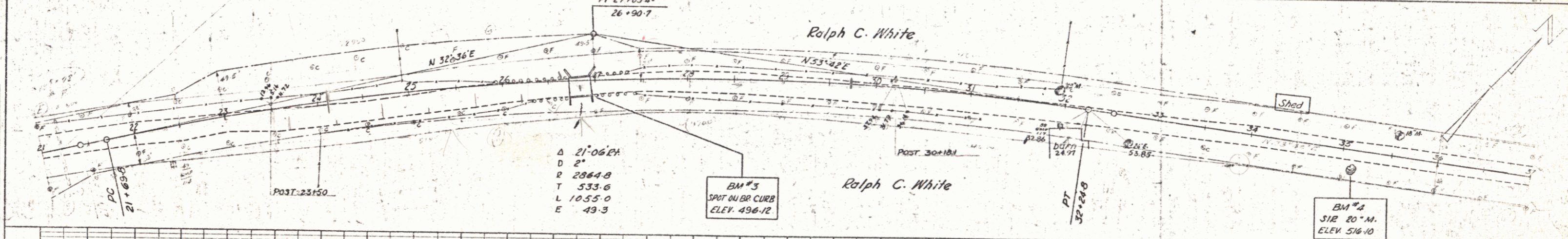
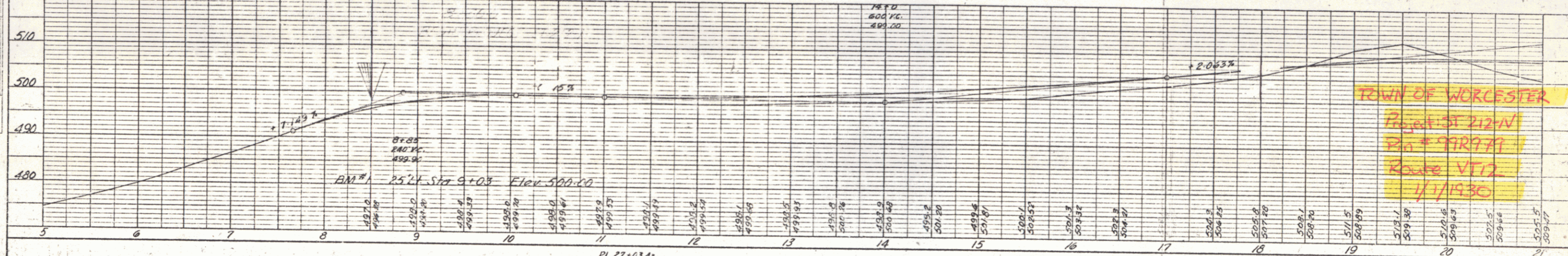
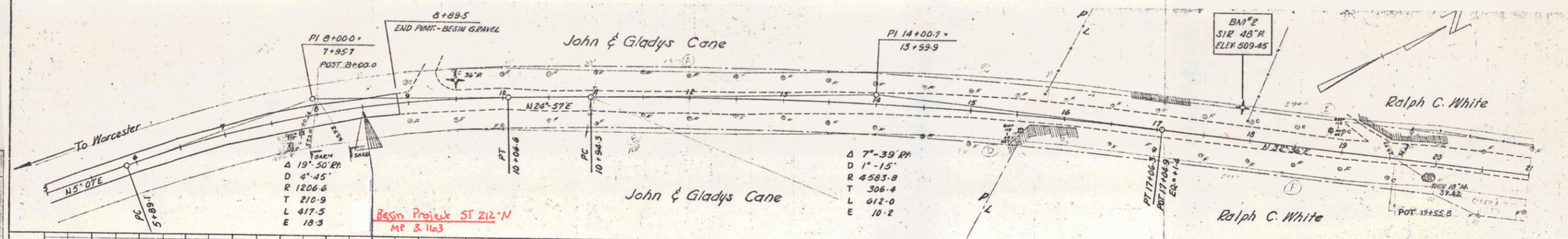


PLAN  
 SUPPLIED  
 NOTE BOOK  
 NO. OF ANY CHECKS  
 NO.

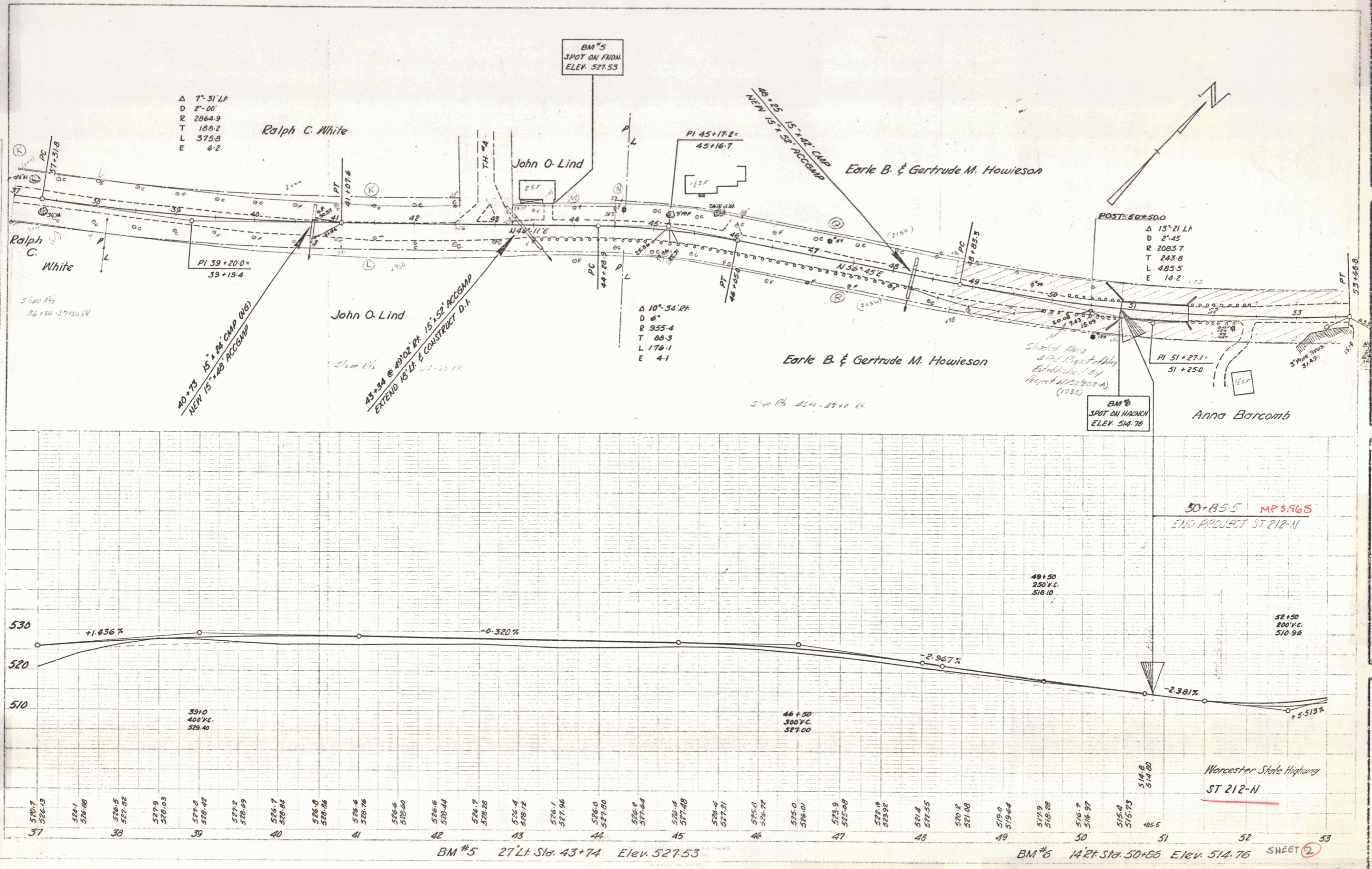
PROFILE  
 SUPPLIED  
 NOTE BOOK  
 NO. OF ANY CHECKS  
 NO.



DATE: PLAN - PROFILE C.P. N.E.E. SHAW  
 KEUFFEL & ESSER CO. NEW YORK  
 N.E.E. No. 248-20

PLAN	DATE	BY
REVISION		
1		
2		
3		
4		
5		
6		
7		
8		
9		
10		

PROFILE	DATE	BY
REVISION		
1		
2		
3		
4		
5		
6		
7		
8		
9		
10		



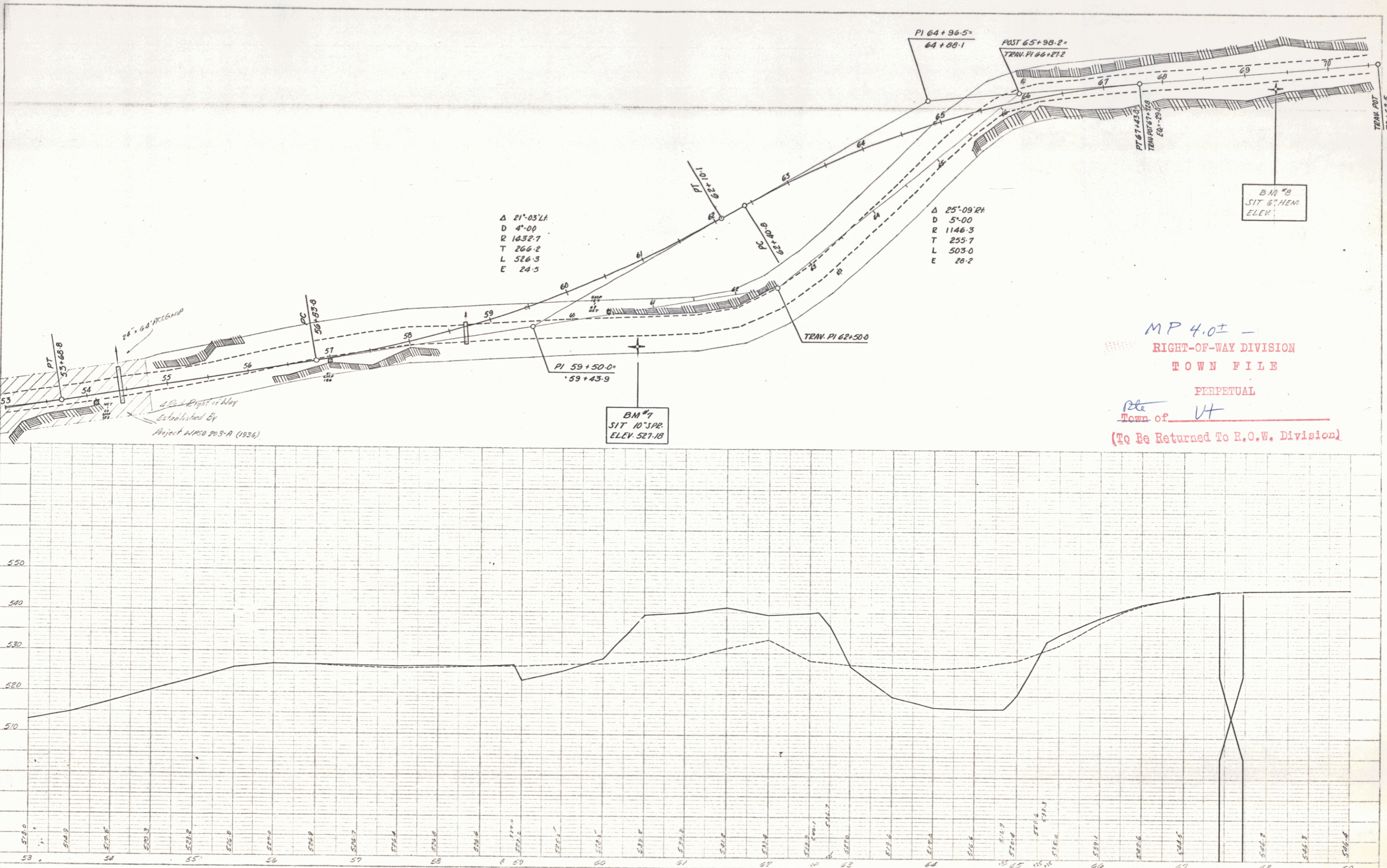
BM #5 27' Lt. Sta. 43+74 Elev. 527.53

BM #6 142' Lt. Sta. 50+86 Elev. 514.76

SHEET 2

PLAN  
 DRAWN BY  
 CHECKED BY  
 DATE  
 NOTE: ROAD RIGHTS OF WAY SHOWN BY DASHED LINE  
 ALL RIGHTS OF WAY TO BE PERPETUAL

PROFILE  
 DRAWN BY  
 CHECKED BY  
 DATE  
 NOTE: ROAD RIGHTS OF WAY SHOWN BY DASHED LINE  
 ALL RIGHTS OF WAY TO BE PERPETUAL



MP 4.02 -  
 RIGHT-OF-WAY DIVISION  
 TOWN FILE  
 PERPETUAL  
 Town of VT  
 (To Be Returned To R.O.W. Division)

PLATE 1 - PLAN-PROFILE OF P.L.E. CURVES  
 REVISED & ISSUED BY, NEW YORK  
 H. & E. CO. INC. 380 N. 4TH ST.  
 NEW YORK, N.Y.

WORCESTER  
 FROM END WPSO 203A  
 SHEET 3