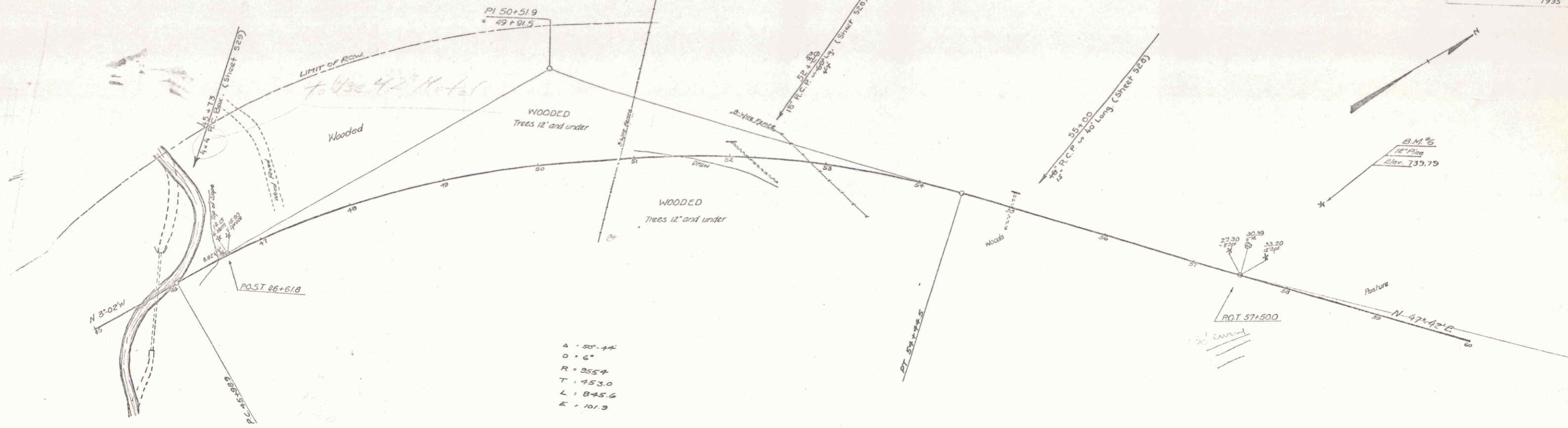
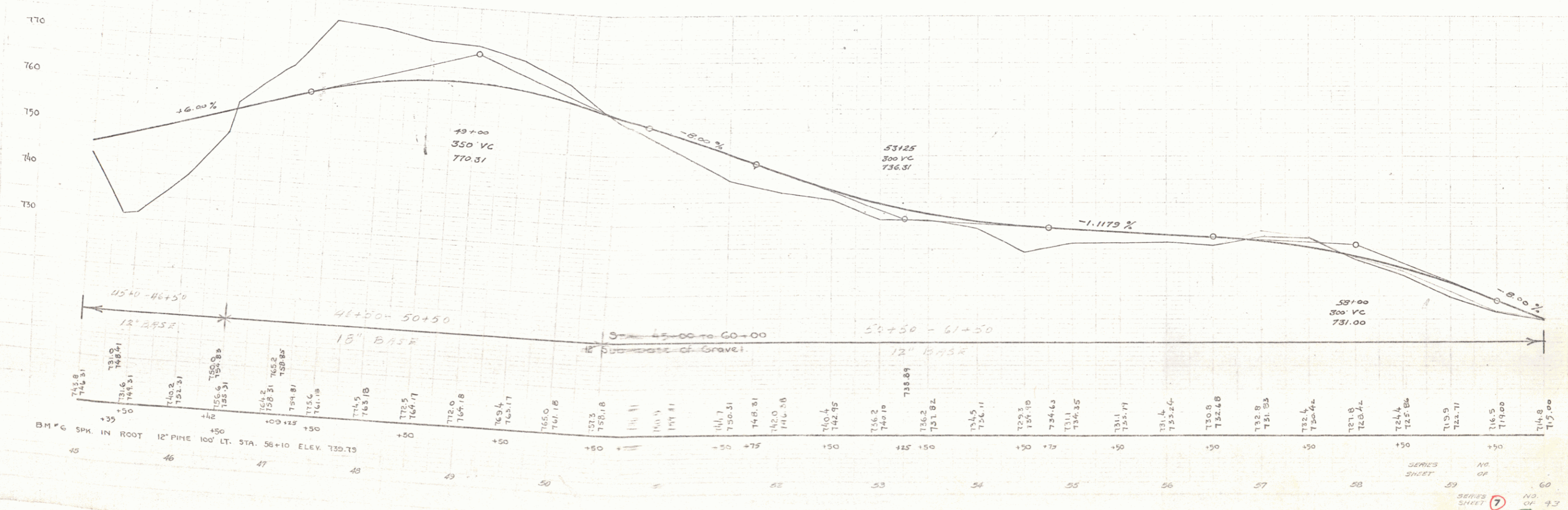


Station	Dist.	Length	Sub. C.
52120	18"	60'	19
53100	18"	40'	19

Station	Dist.	Length	Sub. C.
43173	4.8"	76'	41.7
			40.55



- A = 80'-14"
- D = 6"
- R = 255'-7"
- T = 453.0
- L = 8+5.6
- E = 101.3



SERIES SHEET NO. 7 OF 9  
 70