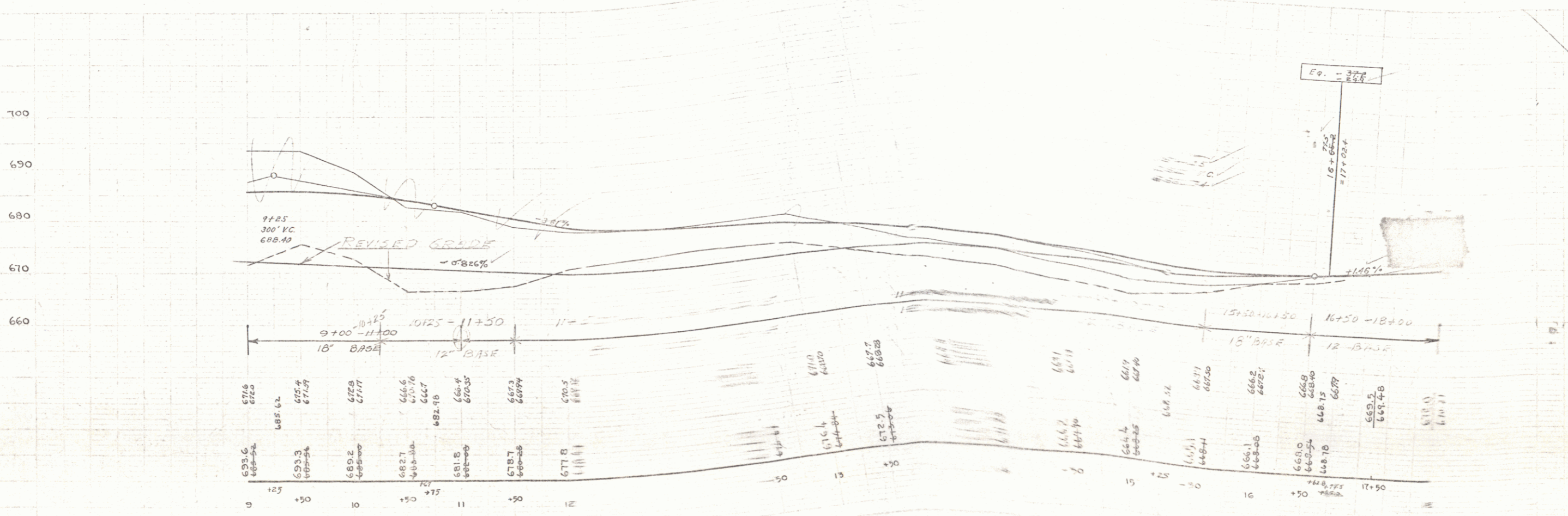
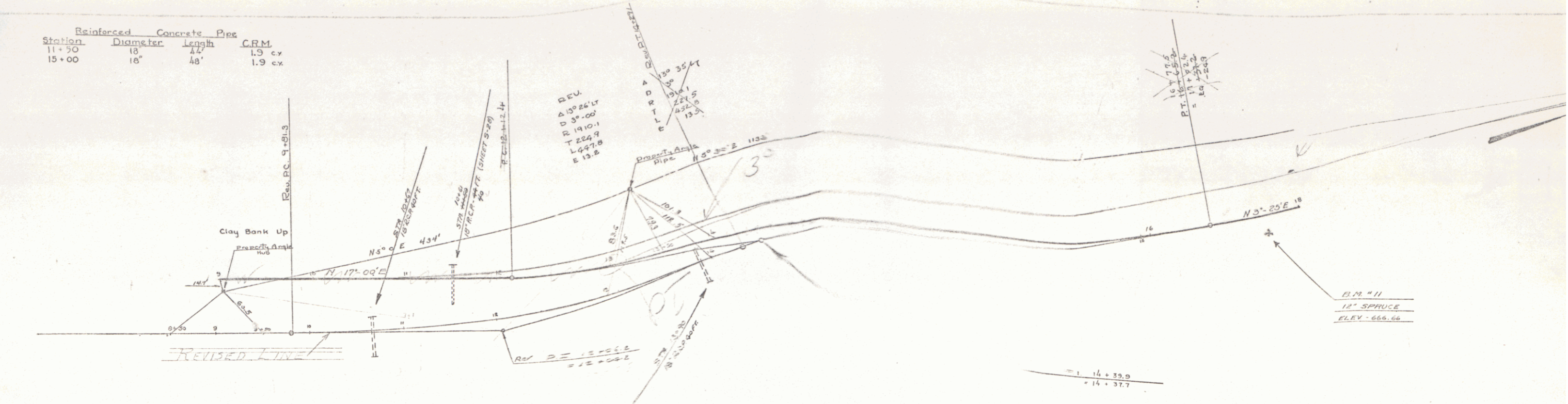


Station	Diameter	Length	C.M.
11+50	18"	48'	1.5 c.v.
15+00	18"	48'	1.9 c.v.

Rev. 35
 Leach
 Bjorn
 Traced
 Bjorn



B.M. #11 SPK IN FOOT OF 12" SPRUCE 15' FT. OF STR. 17162 ELEV. 666.66

SHEET 4

67