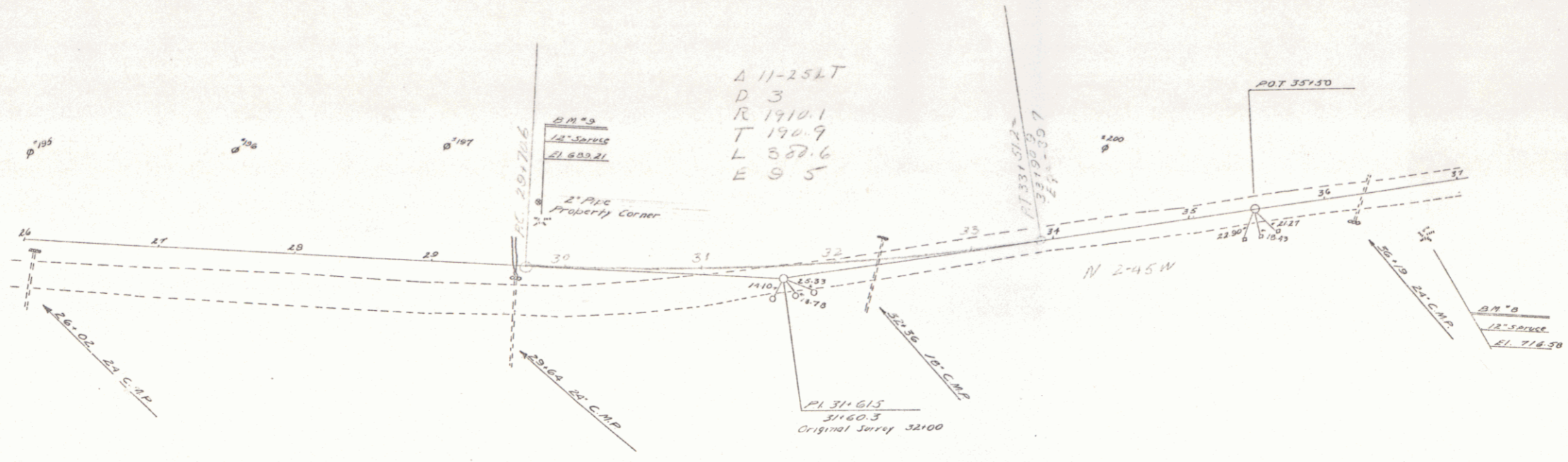


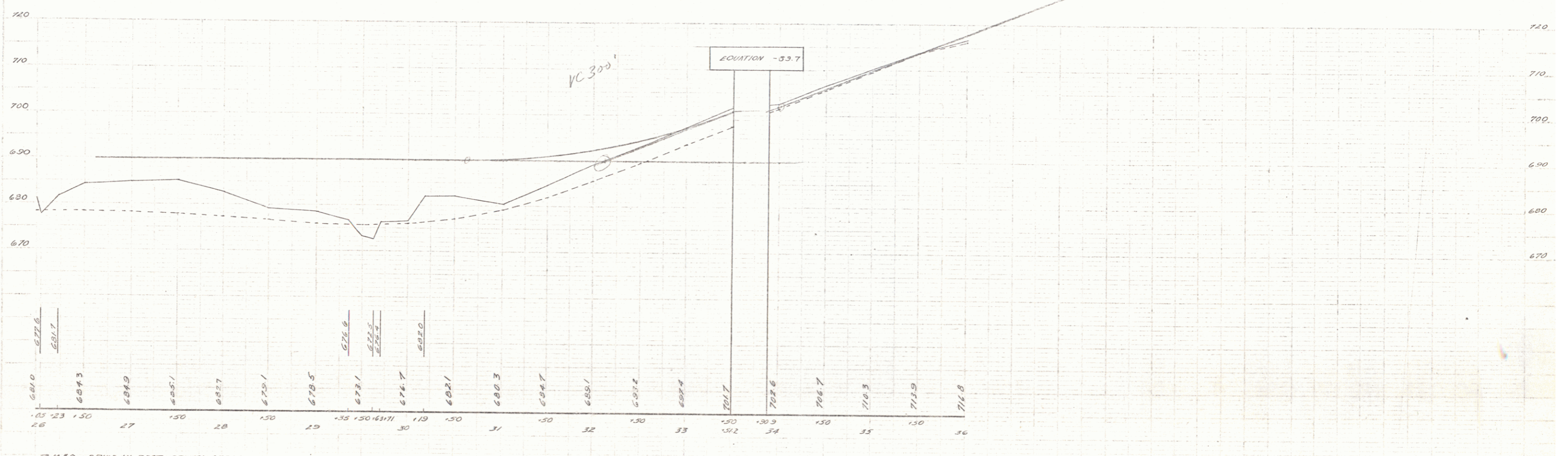
33

DATE  
BY  
CHECKED  
APPROVED



$\Delta 11-254T$   
 $D 3$   
 $R 1910.1$   
 $T 190.9$   
 $L 352.6$   
 $E 9.5$

690



B.M. 'O' SPIKE IN ROOT OF 12' SPRUCE 34' LT STA. 29+80 EL. 689.21

SERIES SHEET 3 NO OF

65