

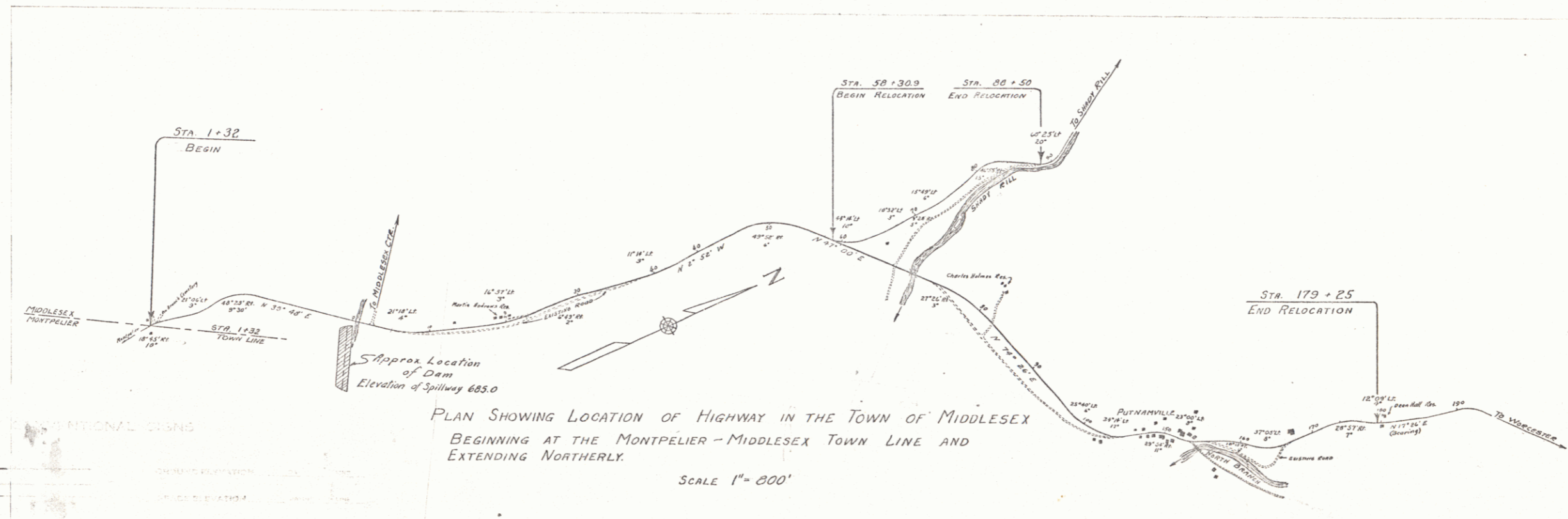
INDEX OF SHEETS

| | | |
|-----------|---|--------------------------------------|
| SHEET NO. | 1 | TITLE PAGE |
| " | 2 | TYPICAL CROSS-SECTION OF IMPROVEMENT |
| " | 3 | BANKING AND WIDENING TABLES |
| " | 4 | PLAN AND PROFILE STA. |

| FED. ROAD DIST. NO. | STATE | FED. AID PROJ. NO. | FISCAL YEAR | SHEET NO. | TOTAL SHEETS |
|---------------------|-------|--------------------|-------------|-----------|--------------|
| 9 | Vt. | | | | |

STATE OF VERMONT
STATE HIGHWAY DEPARTMENT

PLAN AND PROFILE OF PROPOSED
STATE HIGHWAY
FEDERAL AID PROJECT



CONVENTIONAL SIGNS

| | |
|-------------------|-------|
| COUNTY LINE | |
| TOWN LINE | |
| FENCE LINE | |
| STONE WALL | |
| UNFENCED PROPERTY | |
| GUARD RAIL | |
| TRAVELED WAY | |
| RAILROAD | |
| RETAINING WALL | |
| CENTER LINE | |
| SURVEY LINE | |
| CULVERT | |
| DROP INLET | |
| TROLLEY POLE | |
| POWER POLE | |
| TELEPHONE POLE | |
| TREES | |
| HEDGE | |

CURVE DATA

| | |
|-----------------------|----------------|
| DEFLECTION ANGLE | Δ |
| DEGREE OF CURVE | D |
| RADIUS OF CURVE | R |
| TANGENT DISTANCE | T |
| LENGTH OF CURVE | L |
| EXTERNAL DISTANCE | E |
| POINT OF INTERSECTION | P. I. |
| POINT OF CURVE | P. C. |
| POINT OF TANGENT | P. T. |
| POINT ON TANGENT | P. O. T. |

APPROVED: _____
COMMISSIONER OF HIGHWAYS
SUBMITTED BY ORDER OF THE STATE HIGHWAY DEPARTMENT

RECOMMENDED _____
DISTRICT ENGINEER BUREAU OF PUBLIC ROADS
RECOMMENDED FOR APPROVAL _____
CHIEF ENGINEER BUREAU OF PUBLIC ROADS
APPROVED _____
DIRECTOR - BUREAU OF PUBLIC ROADS

SERIES F NO. _____ FILED
SHEET 18 OF _____

3
52