

INDEX OF SHEETS

SHEET NO. 1	TITLE PAGE
" 2	TYPICAL CROSS-SECTION OF IMPROVEMENT STABILIZED GRAVEL BASE COURSE OF CUTBACK ASPHALT WITH SAND SEAL ITEM 303-B
" 3	BANKING AND WIDENING TABLES
" 4	CONSTRUCTION DETAILS (CD) DRAINAGE AND MARKERS
" 5	CONSTRUCTION DETAILS (CD 1) DITCHES
" 6	QUANTITIES SHEET (ITEMS AND DRAINAGE)
7-8	EARTHWORK SHEETS
9	STANDARD STRUCTURE SHEET S-40 (BARRICADES, SIGNS AND LIGHTS)
10	DETAILS OF CORRUGALV. MET. PLATE PIPE ARCH 93" X 64" STA. 22+98
11-14	PLAN AND PROFILE SHEETS
15-24	CROSS-SECTIONS

STANDARD STRUCTURE SHEET APPROVED BY THE CHIEF ENGINEER, VERMONT STATE DEPARTMENT OF HIGHWAYS
S-40 JULY 10, 1950

PROJECT NAME & NUMBER	TYPE	PAVEMENT AREA
BAKERSFIELD S 53 (6)	STAB. GR. BASE	9:52B S.Y.
RECORD PLANS		
MATERIALS		
SUB-BASE OF GRAVEL MOREY PIT, E. FAIRFIELD, VT.	FIBRE DR. PIPE BERNCO, BERLIN, N. H.	
ASPHALT STANDARD OIL CO., ALBANY, N.Y.	ACCGMP BENSER MET. PIPE CO., WESTMINSTER, ST. VT.	
ROP V.F. CO. PIPE CO., WINDSOR, VT.		
CONTRACTOR MORRIS & SAMPLE	CONTRACT DATED DEC. 8, 1952	
RES. ENGINEER H. G. GARRETS	CONTRACT STARTED MAY 5, 1953	
INSPECTOR G. E. HOPKINS	CONTRACT COMPLETED AUG. 13, 1953	
RECORD PLANS G. E. HOPKINS	CONTRACT ACCEPTED AUG. 13, 1953	

STATE OF VERMONT
STATE HIGHWAY DEPARTMENT

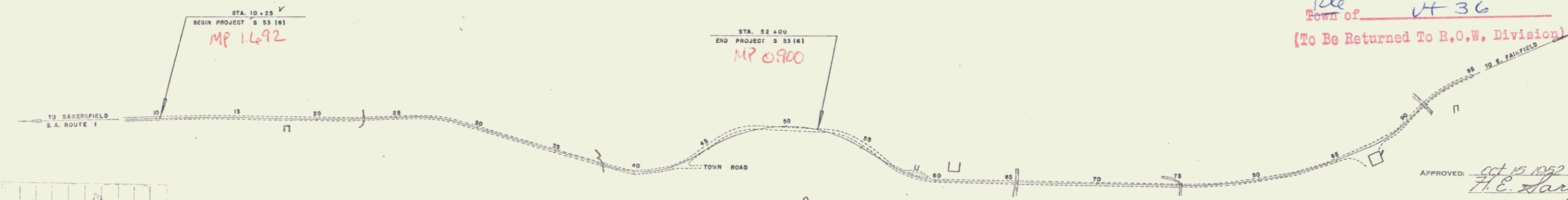
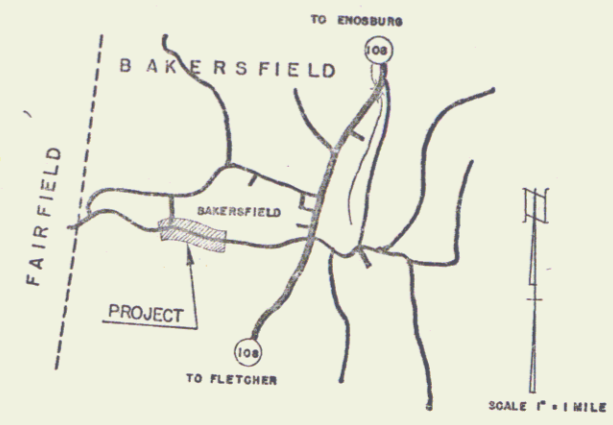
PLAN AND PROFILE OF PROPOSED
STATE HIGHWAY

TOWN OF BAKERSFIELD
COUNTY OF FRANKLIN
STATE AID ROUTE 1
BAKERSFIELD-EAST FAIRFIELD ROAD

BEGINNING AT A POINT 0.8 MILE WEST OF THE INTERSECTION OF VERMONT ROUTE 109 AND STATE AID ROUTE 1 AND EXTENDING WESTERLY 4,175 FT.

LENGTH OF PROJECT 4,175 FT = 0.791 MILE

RD. NO.	STATE	PROJ. NO.	FISCAL YEAR	SHEET NO.	TOTAL SHEETS
1	VT.	53(6)	POST MAR	1	24



RIGHT-OF-WAY DIVISION
TOWN FILE
PERPETUAL
Rte Town of VT 36
(To Be Returned To R.O.W. Division)

APPROVED: *H.E. Targent*
OCT 15 1952
CHIEF ENGINEER
SUBMITTED BY ORDER OF THE STATE HIGHWAY BOARD

BAKERSFIELD
S-53(6)
TYPE: STAB. GR. BASE
CONTRACTOR: MORRIS & SAMPLE
LOCATION: See Title page.

GROUND ELEVATION	DATUM	LINE
GRADE ELEVATION	DATUM	LINE

CURVE DATA

DEFLECTION ANGLE	Δ
DEGREE OF CURVE	D
RADIUS OF CURVE	R
TANGENT DISTANCE	T
LENGTH OF CURVE	L
EXTERNAL DISTANCE	E
POINT OF INTERSECTION	P. I.
POINT OF CURVE	P. C.
POINT OF TANGENT	P. T.
POINT ON TANGENT	P. O. T.

SCALES

TITLE	1" = 300'
TYPICAL	1" = 2'
PLAN	1" = 50'
PROFILE HORIZONTAL	1" = 100'
PROFILE VERTICAL	1" = 10'
CROSS SECTIONS	1" = 5'

THESE PLANS ARE SUBJECT TO SUCH REVISIONS AS MAY BE REQUIRED BY THE BUREAU OF PUBLIC ROADS OR THE COMMISSIONER OF HIGHWAYS.
CONSTRUCTION IS TO BE CARRIED ON IN ACCORDANCE WITH THE PLANS AND THE STANDARD ROAD AND BRIDGE SPECIFICATIONS OF 1948, AS APPROVED JULY 25 1949 BY THE BUREAU OF PUBLIC ROADS, INCLUDING ALL SUBSEQUENT APPROVED REVISIONS AND SUCH REVISED SPECIFICATIONS AND SPECIAL PROVISIONS AS ARE SUBMITTED WITH THE PLANS.

DEPARTMENT OF COMMERCE
BUREAU OF PUBLIC ROAD

RECOMMENDED FOR APPROVAL

DISTRICT ENGINEER DATE

APPROVED

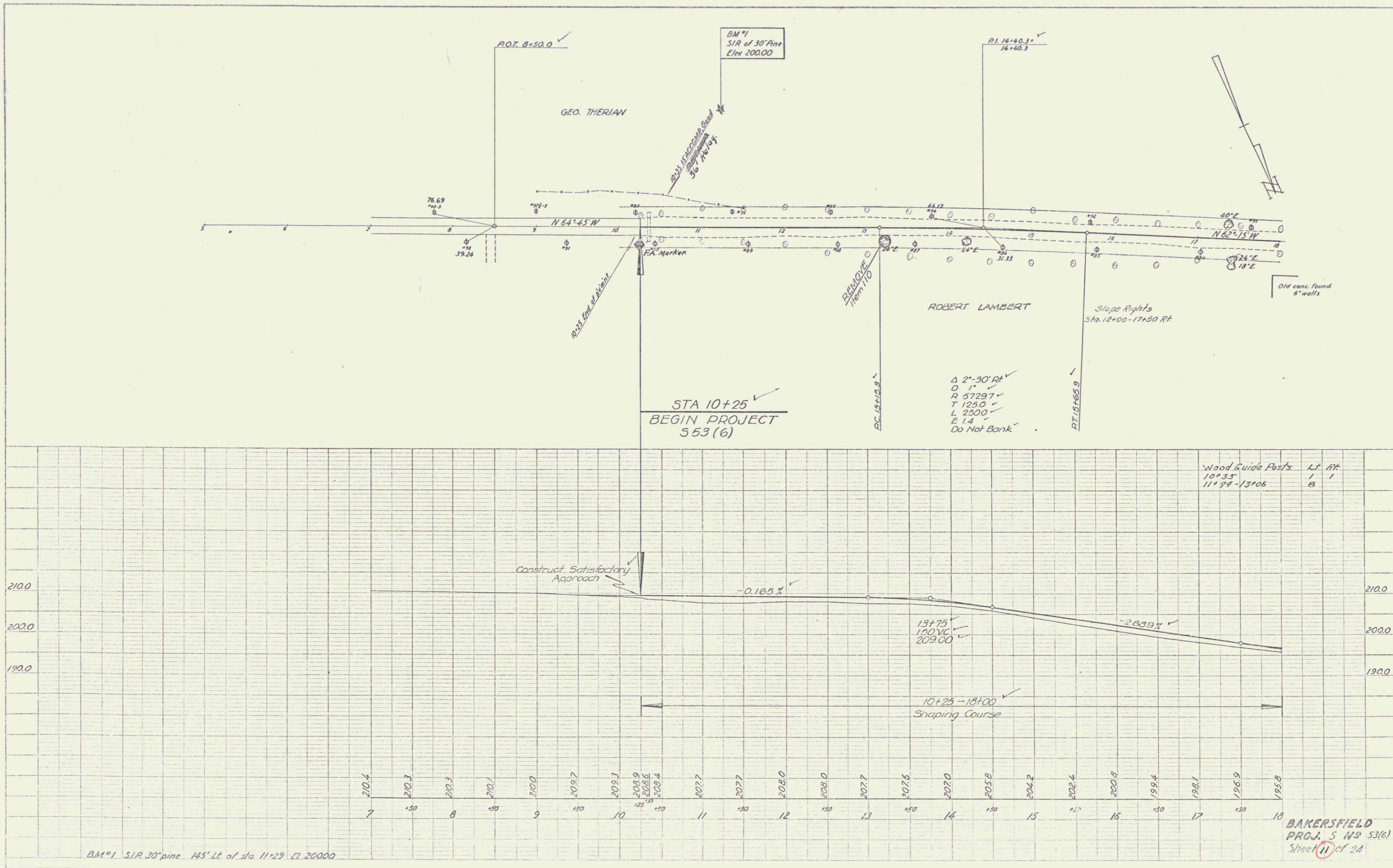
DIVISION PROJECT DATE

APPROVED	APPROVED	APPROVED	APPROVED
CONSTRUCTION ENGINEER	SECONDARY ENGINEER	HIGHWAY ENGINEER	DISTRICT ENGINEER

STEARNS R. JENKINS
Rte 36

PLAN
 DATE: 11/29/00
 DRAWN BY: SHULLING
 CHECKED BY: MILLER
 PROJECT NO.: 53(6)
 SHEET NO.: 11

PROF. PLAN
 DATE: 11/29/00
 DRAWN BY: SHULLING
 CHECKED BY: MILLER
 PROJECT NO.: 53(6)
 SHEET NO.: 11

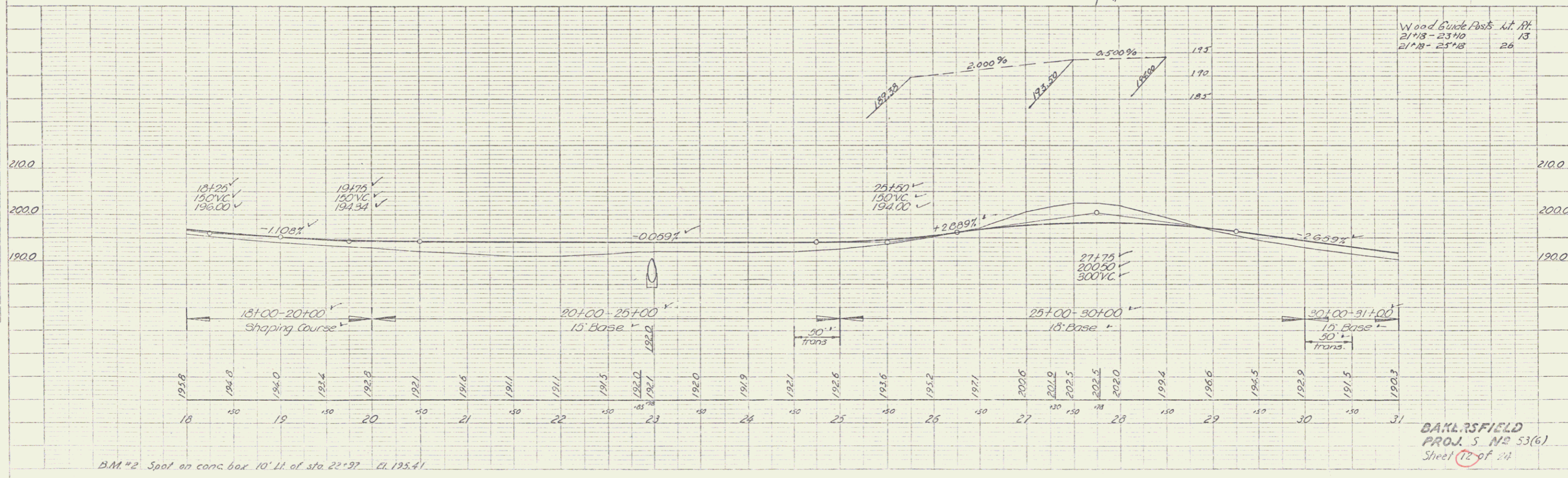
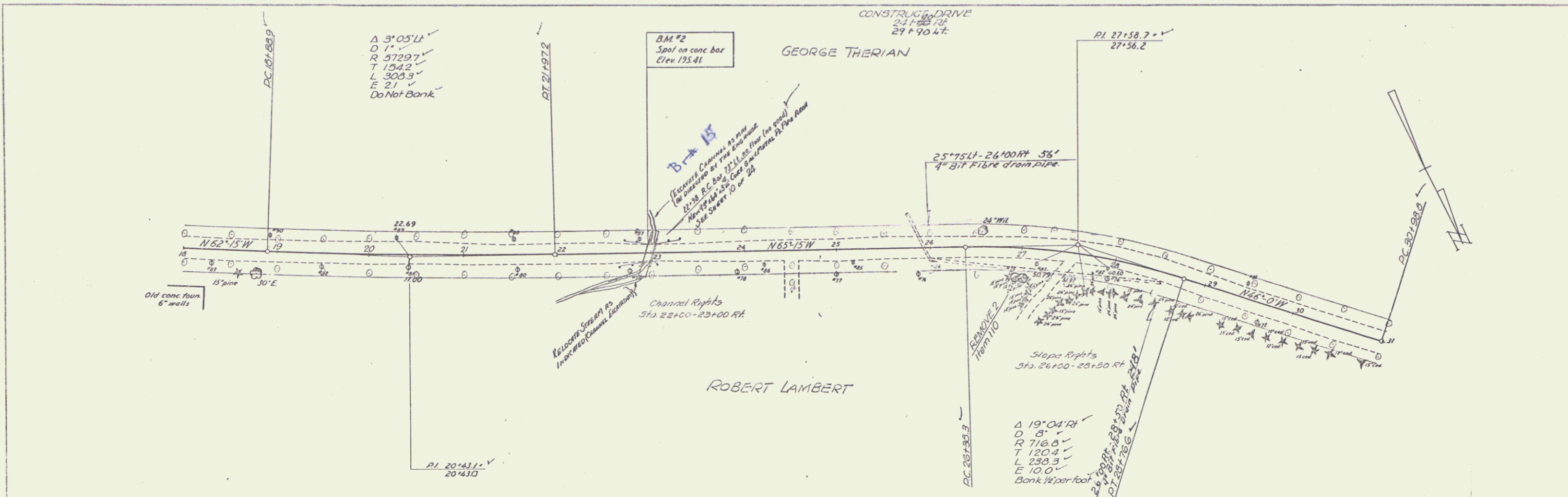


BM #1 SIR 30' pine 145' Lt. of sta. 11+29 Lt. 200.00

BAKERSFIELD
 PROJ. 5 N 53(6)
 Sheet 11 of 24

PLAN	DATE	BY
SPALLING	AUG 31	OKCER
OKCER	AUG 31	MILLER
MILLER	AUG 31	

PROFILE	DATE	BY
SPALLING	AUG 31	OKCER
OKCER	AUG 31	MILLER
MILLER	AUG 31	

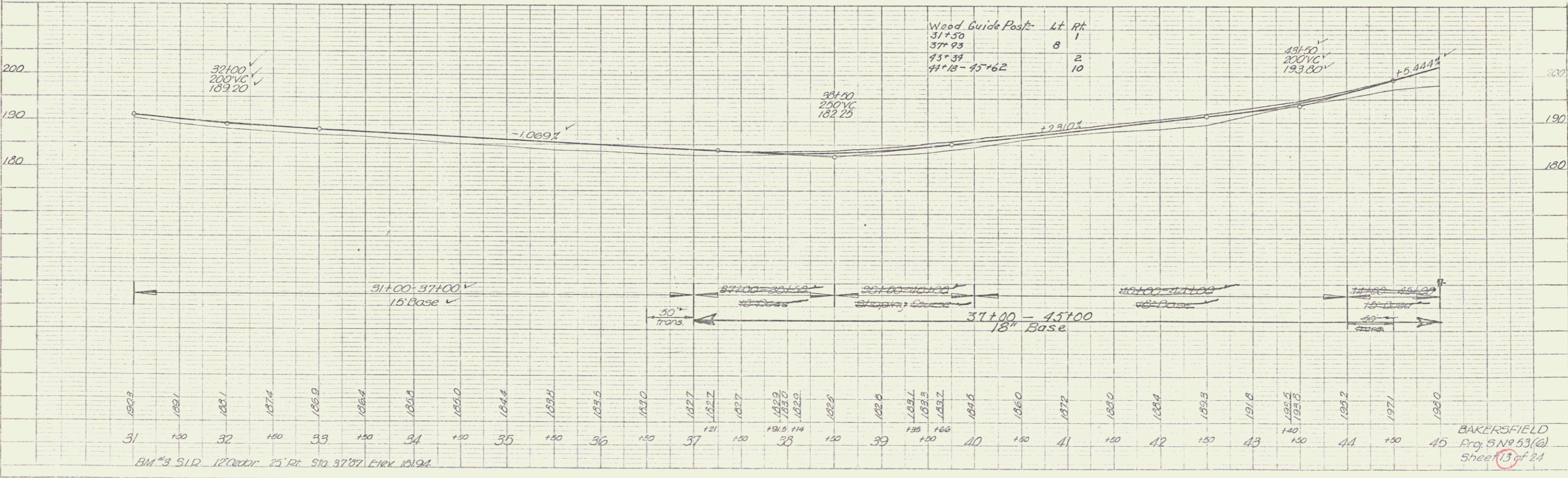
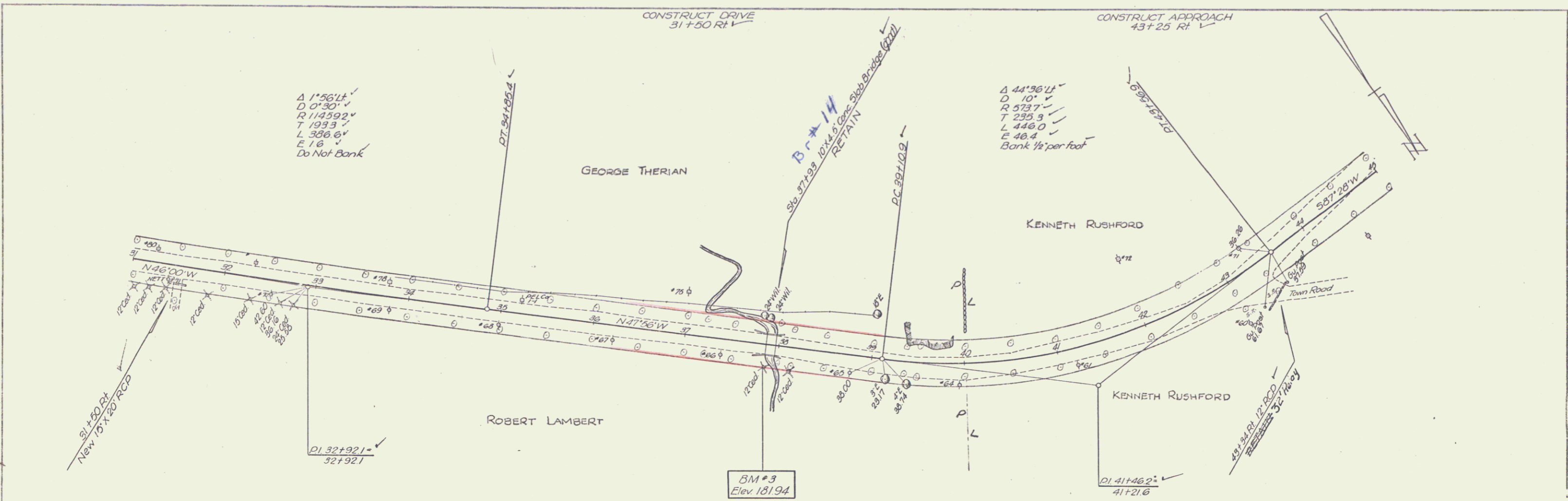


B.M. #2 Spot on conc. box 10' Lt. of sta. 22+97 El. 195.41

BAKERSFIELD
PROJ. 5 NO 53(6)
Sheet 12 of 24

PLAN
 DATE 9-22-32
 DRAWN BY Spaulding
 CHECKED BY Hurley
 NOTE: SHOW GRADATIONS CHECKED.
 1/2" = 100' HORIZ.
 1/8" = 10' VERT.

PROFILE
 DATE 9-22-32
 DRAWN BY Spaulding
 CHECKED BY Hurley
 NOTE: SHOW GRADATIONS CHECKED.
 1/2" = 100' HORIZ.
 1/8" = 10' VERT.



BM #3 31R 12' Cedar 25' Rt. Sta. 37.87 Elev. 181.94

BAKERSFIELD
 Proj. 5 No. 53(a)
 Sheet 13 of 24

PLATE 1 - PLAN - PROFILE - P. & R. E. STANBAM
 1877 - 1888 - NEW YORK
 1877 - 1888 - NEW YORK

M.P. - 0117

PARCEL NO. 1 WHITNEY, WILLIAM HAROLD
PALMER, A. FAITH WHITNEY

STA. 36+00 LT. — STA. 40+00 LT. CONST. EASE. (T) 0.22 A±

STA. 37+25 LT. — STA. 37+75 LT. CHANNEL RT. (T)

STA. 37+25 LT. — STA. 38+00 LT. RIGHT TO CONST. & MAINT.
HEADWALL & PIPES, (P)

STA. 38+50 LT. DRIVE (T)

Q.C.D.O.E. ON 5/24/76; BR 32/313-15

PARCEL NO. 2 D. FRANCIS HOWRIGAN & SONS, INC.

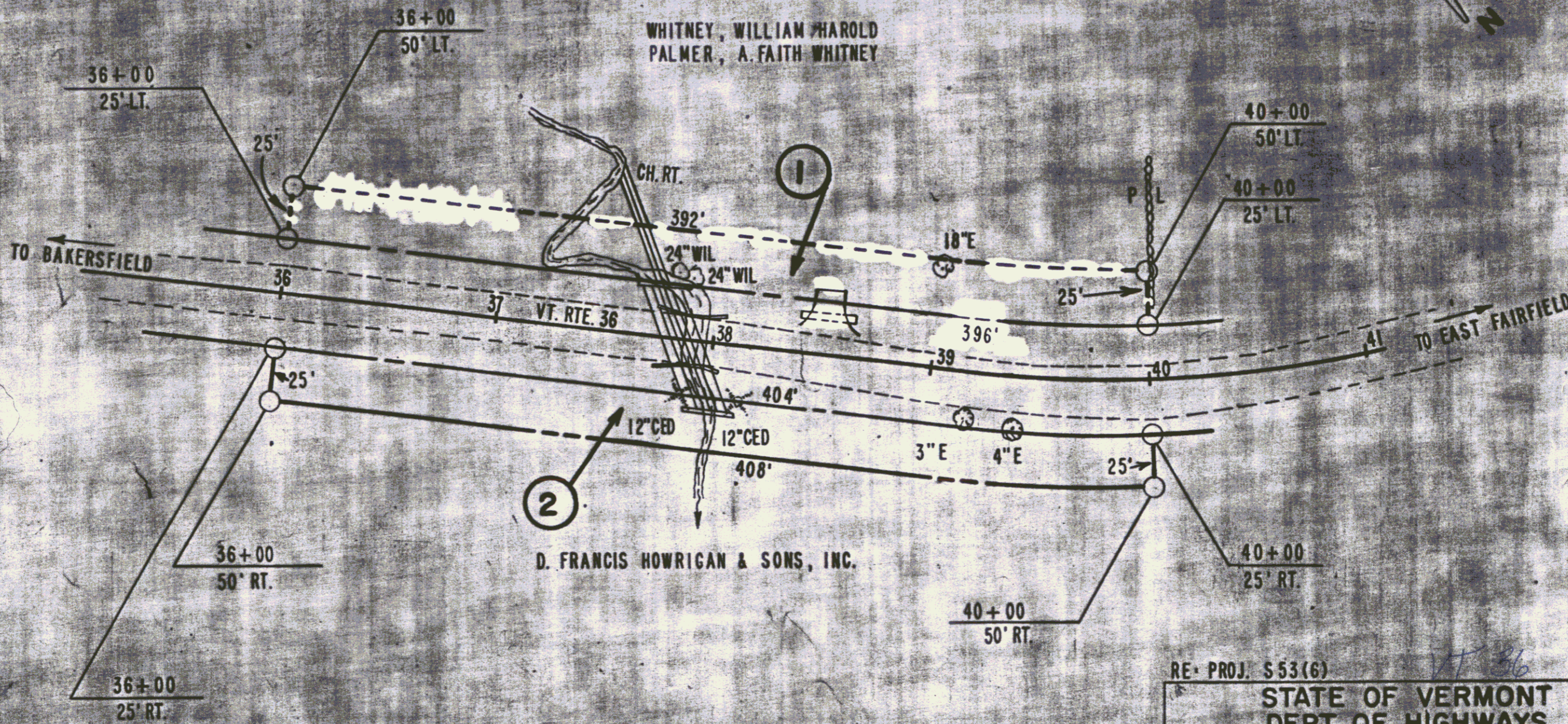
STA. 36+00 RT. — 40+00 RT. 0.22 A±

M.P. - 0117

WDOE TO STATE OF VERMONT

DATED 6/25/76 IN 32/313A-314A

POOR ORIGINAL COPY



②

①

SCALE = 1" = 50'



RE. PROJ. S 53 (6) BR. 14

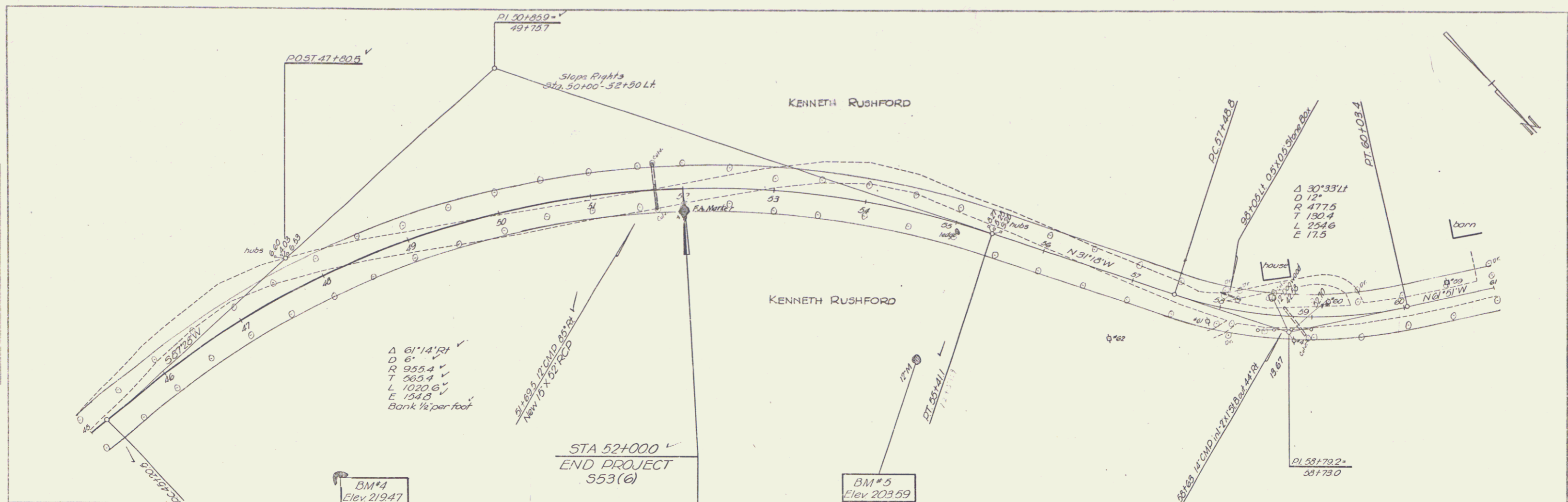
STATE OF VERMONT
DEPT. OF HIGHWAYS

TOWN OF BAKERSFIELD

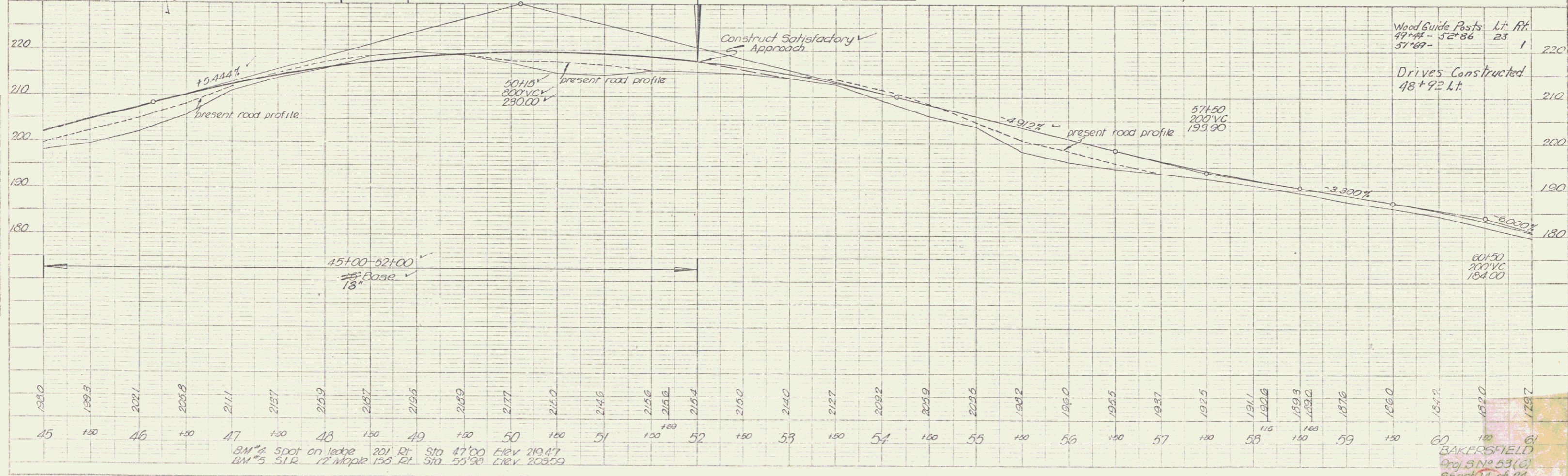
PROJECT BAKERSFIELD BMA 6610
APPROX. SCALE 1" = 50' DATE 3-24-76 DRAWN BY KDP

REV. 9-3-76

PLAN
 DATE: 8/27/2013
 DRAWN BY: [unclear]
 CHECKED BY: [unclear]
 PROJECT NO: 533(6)



PROFILE
 DATE: 8/27/2013
 DRAWN BY: [unclear]
 CHECKED BY: [unclear]
 PROJECT NO: 533(6)



Wood Guide Posts Lt. Ft.
 49+44 - 52+86 23 1
 51+69

Drives Constructed
 48+92 Lt.

BM#4 Spot on ledge 201 Rt. Sta 47+00 Elev 219.47
 BM#5 STR 12 Maple 156 Rt. Sta 55+08 Elev 203.59

BAKERSFIELD
 Proj. No. 533(6)
 Sheet 14 of 24

6