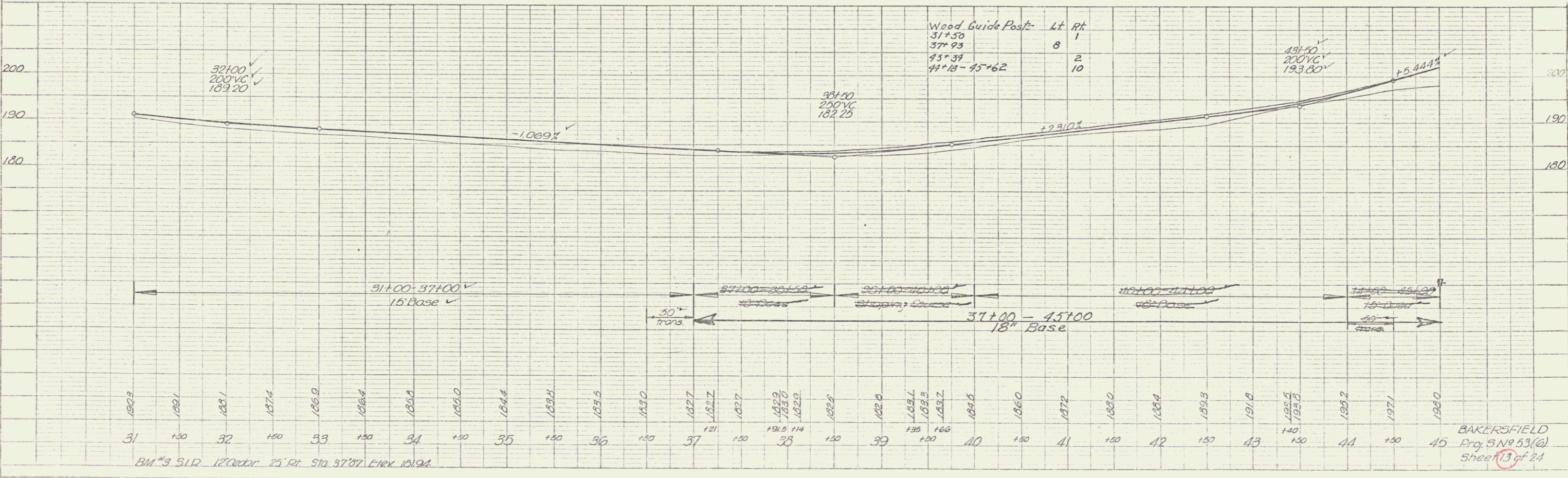
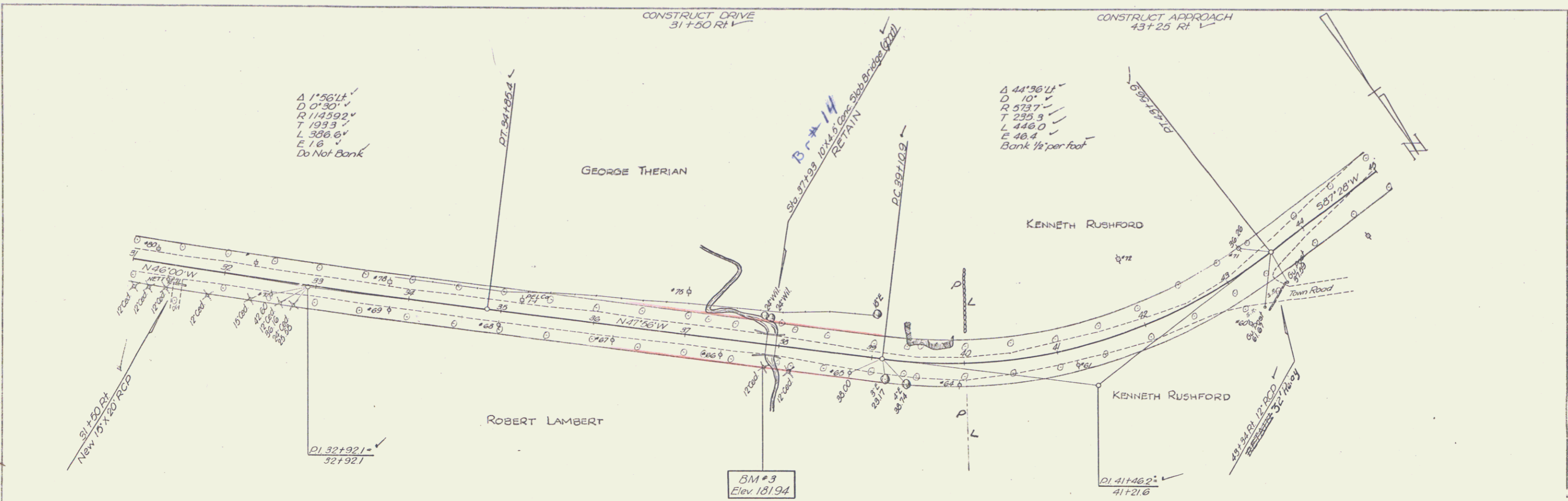


PLAN  
 DATE 9-22-32  
 DRAWN BY Spaulding  
 CHECKED BY Hurley  
 NOTE: SHOW GRADATIONS CHECKED.  
 1/2" = 100' HORIZ.  
 1/4" = 10' VERT.

PROFILE  
 DATE 9-22-32  
 DRAWN BY Spaulding  
 CHECKED BY Hurley  
 NOTE: SHOW GRADATIONS CHECKED.  
 1/2" = 100' HORIZ.  
 1/4" = 10' VERT.



BM #3 312 12' Cedar 25' Rt. Sta. 37.87 Elev. 181.94

BAKERSFIELD  
 Proj. 5 No. 53(a)  
 Sheet 13 of 24

PLATE 1 - PLAN - PROFILE - P. & R. E. STANBRO  
 1817 - 1818 - 1819 - 1820 - 1821 - 1822 - 1823 - 1824 - 1825 - 1826 - 1827 - 1828 - 1829 - 1830 - 1831 - 1832 - 1833 - 1834 - 1835 - 1836 - 1837 - 1838 - 1839 - 1840 - 1841 - 1842 - 1843 - 1844 - 1845 - 1846 - 1847 - 1848 - 1849 - 1850 - 1851 - 1852 - 1853 - 1854 - 1855 - 1856 - 1857 - 1858 - 1859 - 1860 - 1861 - 1862 - 1863 - 1864 - 1865 - 1866 - 1867 - 1868 - 1869 - 1870 - 1871 - 1872 - 1873 - 1874 - 1875 - 1876 - 1877 - 1878 - 1879 - 1880 - 1881 - 1882 - 1883 - 1884 - 1885 - 1886 - 1887 - 1888 - 1889 - 1890 - 1891 - 1892 - 1893 - 1894 - 1895 - 1896 - 1897 - 1898 - 1899 - 1900