

INDEX OF SHEETS

SHEET NO.	TITLE PAGE	DOUBLE-TACK COAT OF REFINED TAR
1	TITLE PAGE	
2	TYPICAL CROSS-SECTION OF IMPROVEMENT WITH SAND GRAVEL SEAL, ITEM 311-A	
3	BANKING AND WIDENING TABLES	
4	QUANTITY SHEET (ITEMS)	
5	QUANTITY SHEET (DRAINAGE)	
6-7	EARTHWORK SHEETS	
8-10	PLAN AND PROFILE SHEETS	
11	STANDARD STRUCTURE SHEET S 40	BARRICADES, SIGNS AND LIGHTS
12	" " " S 41	TYPICAL GRADING, CROSS SECTIONS
13	" " " S 46-45	PROJECT MARKERS
14	" " " S 47-45	PIPE CULVERTS
15	" " " S 48-46	WOOD GUIDE POSTS
16-24	CROSS SECTIONS	

STANDARD STRUCTURE SHEETS APPROVED BY THE CHIEF ENGINEER, VERMONT STATE DEPARTMENT OF HIGHWAYS.—

S 40	FEB. 28, 1949
S 46-45	FEB. 28, 1949
S 47-45	FEB. 28, 1949
S 48-46	MAY 13, 1946

STATE OF VERMONT
STATE HIGHWAY DEPARTMENT

PLAN AND PROFILE OF PROPOSED
STATE HIGHWAY

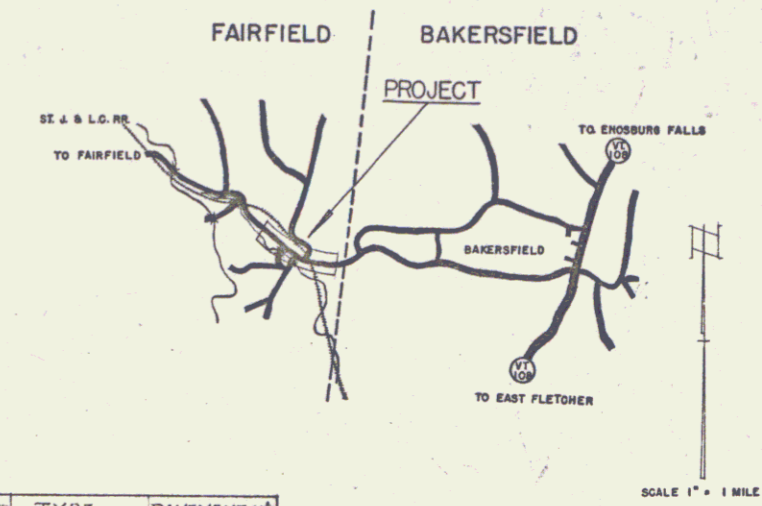
SECONDARY PROJECT

TOWN OF FAIRFIELD

COUNTY OF FRANKLIN
ST. ALBANS-BAKERSFIELD ROAD
VERMONT ROUTE FAS. 10

BEGINNING AT A POINT APPROXIMATELY 2,365 FEET NORTHWESTERLY OF THE RAILROAD CROSSING IN THE HAMLET OF EAST FAIRFIELD AND EXTENDING SOUTHEASTERLY 3,108 FEET. EXCEPTING RAILROAD CROSSING STATION 27+28.5-27+47.2
LENGTH OF PROJECT 3,089.3 FEET = 0.585 MI.—

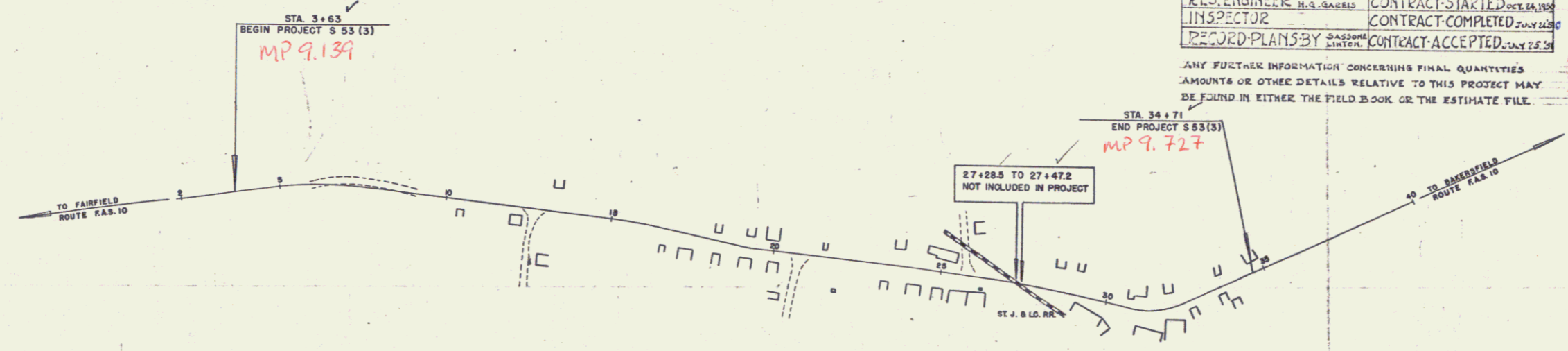
FILE NO.	STATE	PROJ. NO.	FISCAL YEAR	SHEET NO.	TOTAL SHEETS
1	VT.	53(3)	POST	1	24



PROJECT NAME AND NUMBER	TYPE	PAVEMENT AND RECORD PLANS
FAIRFIELD 53(3)	DOUBLE TACK COAT	6030 S.Y.
MATERIALS		
GRAVEL - LANSBERRY PINE TREE FIELDS	REINFORCING STEEL - VERMONT STEEL	
REFINED TAR - DANFORTH TARRYA	E.C.P. VERMONT CONCRETE CO.	PLANTVILLE, VT.
CONCRETE CLASS B - PORTLAND	A.C.C. G.M. P.H.E. MET. CONVT. CO.	
SAND - NADREAU'S JOHNSON PIT	WOOD GUIDE POST - CASS - WIENER	
AGGREGATE - NADREAU'S JOHNSON PIT	C.R.M. FROM PROJECT	
CONTRACTOR - BLOW & COTE	CONTRACT DATED	OCT. 10, 1950
RES. ENGINEER - H.G. BARRETT	CONTRACT STARTED	DEC. 14, 1950
INSPECTOR - J. J. BROWN	CONTRACT COMPLETED	JULY 25, 1951
RECORD PLANS BY - J. J. BROWN	CONTRACT ACCEPTED	JULY 25, 1951

ANY FURTHER INFORMATION CONCERNING FINAL QUANTITIES AMOUNTS OR OTHER DETAILS RELATIVE TO THIS PROJECT MAY BE FOUND IN EITHER THE FIELD BOOK OR THE ESTIMATE FILE.

RIGHT-OF-WAY DIVISION
TOWN FILE
PERPETUAL
Town of VT 36
(To Be Returned to R.O.W. Division)



FAIRFIELD
CONTRACTOR - BLOW & COTE
RES. ENGINEER - H.G. BARRETT
INSPECTOR - J. J. BROWN
RECORD PLANS BY - J. J. BROWN
CONSTRUCTION COMPLETED JULY 20, 1951.

GROUND ELEVATION	DATUM	FIELD LINE
GRADE ELEVATION	DATUM	FIELD LINE

SCALES

TITLE	1" = 200'
TYPICAL	1" = 2'
PLAN	1" = 50'
PROFILE HORIZONTAL	1" = 50'
PROFILE VERTICAL	1" = 10'
CROSS SECTIONS	1" = 5'

CURVE DATA

DEFLECTION ANGLE	Δ
DEGREE OF CURVE	D
RADIUS OF CURVE	R
TANGENT DISTANCE	T
LENGTH OF CURVE	L
EXTERNAL DISTANCE	E
POINT OF INTERSECTION	P. I.
POINT OF CURVE	P. C.
POINT OF TANGENT	P. T.
POINT ON TANGENT	P. O. T.

THESE PLANS ARE SUBJECT TO SUCH REVISIONS AS MAY BE REQUIRED BY THE BUREAU OF PUBLIC ROADS OR THE COMMISSIONER OF HIGHWAYS.
CONSTRUCTION IS TO BE CARRIED ON IN ACCORDANCE WITH THE PLANS AND THE STANDARD ROAD AND BRIDGE SPECIFICATIONS OF 1948, AS APPROVED JULY 25, 1949 BY THE BUREAU OF PUBLIC ROADS INCLUDING ALL SUBSEQUENT APPROVED REVISIONS AND SUCH REVISED SPECIFICATIONS AND SPECIAL PROVISIONS AS ARE SUBMITTED WITH THE PLANS.

APPROVED 18 AUG 1950
HIGHWAY ENGINEER

APPROVED Aug 23 1950
DISTRICT HIGHWAY COMMISSIONER

DEPARTMENT OF COMMERCE
BUREAU OF PUBLIC ROADS

RECOMMENDED FOR APPROVAL

DISTRICT ENGINEER DATE

APPROVED

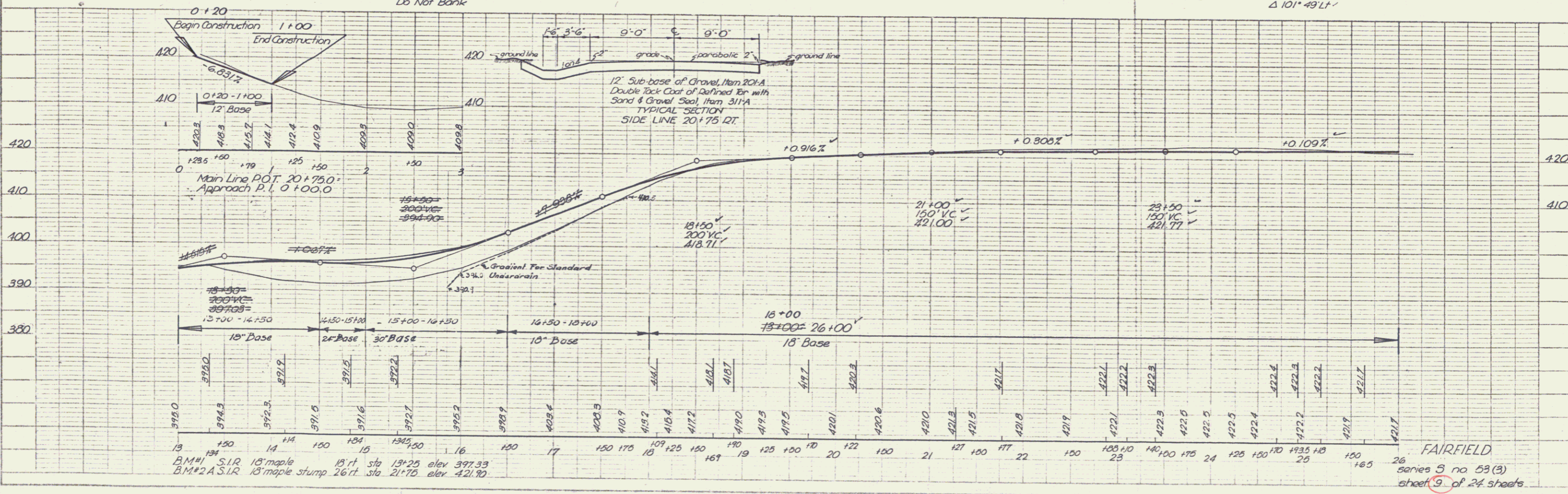
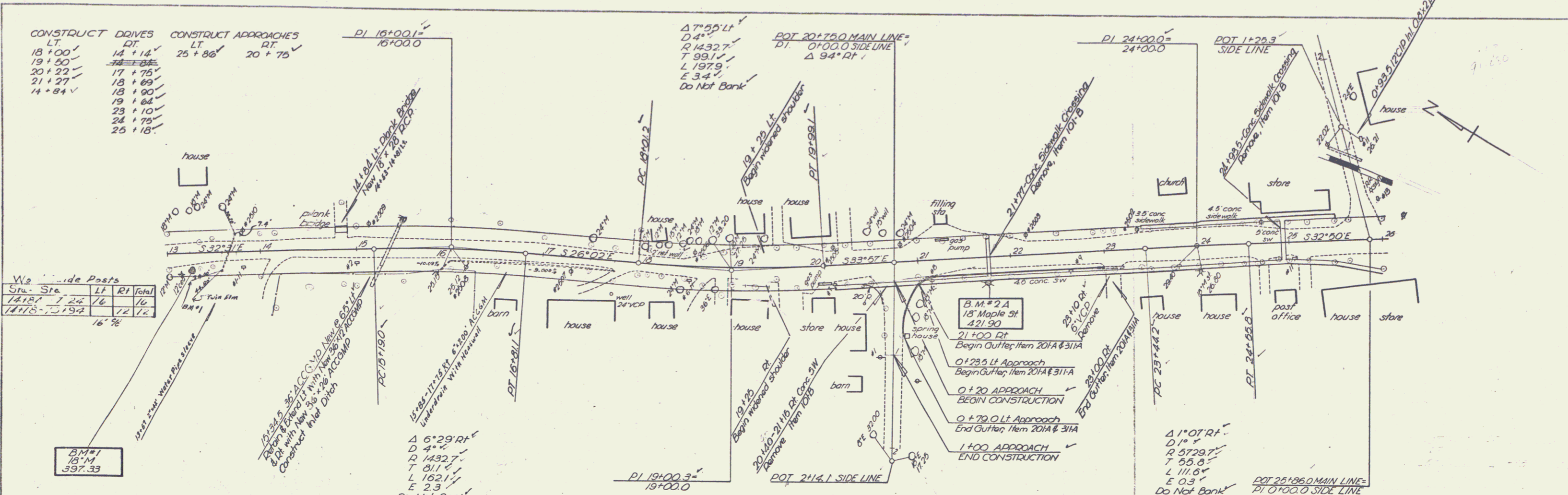
DIVISION ENGINEER DATE

PROJECT S No. 53(3) FILED
SHEET 1 OF 24

VT 36

PLAN
 DATE: 8-30-50
 DRAWN BY: JCC
 CHECKED BY: JCC
 PROJECT NO. 59(3)

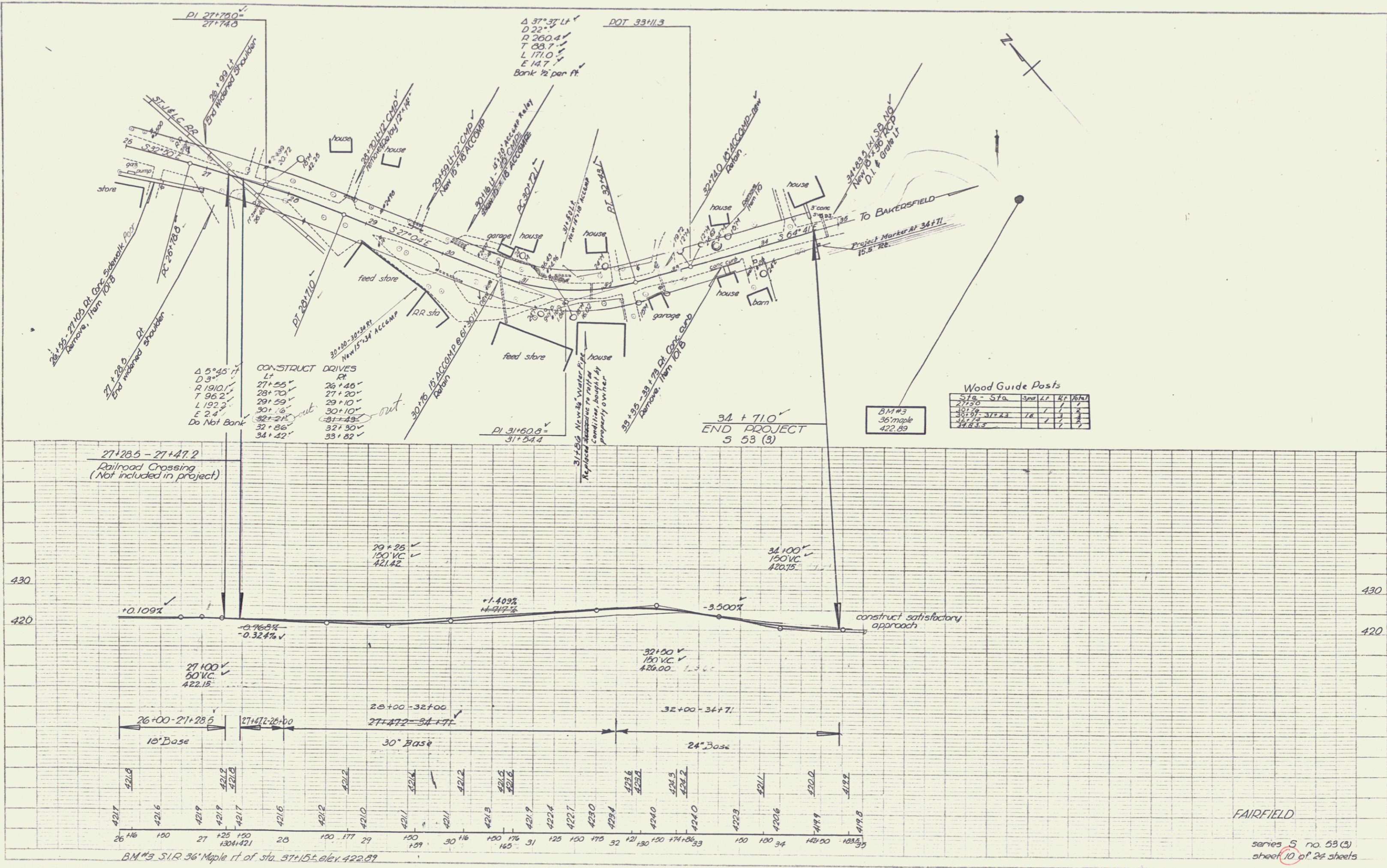
PROFILE
 DATE: 8-30-50
 DRAWN BY: JCC
 CHECKED BY: JCC
 PROJECT NO. 59(3)



FAIRFIELD
 series S no 59(3)
 sheet 9 of 24 sheets

PLAN
 DATE BOOK NO. OF SHEETS
 8-20
 8-20
 7 JOC

PROFILE
 DATE BOOK NO. OF SHEETS
 8-20
 8-20
 7 JOC



PLANS FILED 1927-12-12 O. R. & E. ENGINEERS
 482 E. COLLEGE ST. NEW YORK, N. Y.