

**INDEX OF SHEETS**

SHEET NO.	TITLE PAGE
1	TITLE PAGE (SINGLE TACK COAT OF CUTBACK ASPHALT)
2	TYPICAL SECTIONS WITH CRUSHED PEA STONE, ITEM 314
3	BANKING AND WIDENING TABLES
4	QUANTITY SHEET, ITEMS
5	QUANTITY SHEET, DRAINAGE
6-9	EARTHWORKS
10-21	PLAN AND PROFILE SHEETS
22	CONSTRUCTION DETAILS CD DRAINAGE AND MARKERS
23	CONSTRUCTION DETAILS CD-1 DITCHES
24	STANDARD STRUCTURE SHEET S-40 BARRICADES, SIGNS & LIGHTS
25	STANDARD STRUCTURE SHEET S-45-45 TWO CABLE GUARD RAIL
26-55	CROSS SECTIONS

STANDARD STRUCTURE SHEET APPROVED BY THE CHIEF ENGINEER, VERMONT STATE DEPARTMENT OF HIGHWAYS  
S-40 JUNE 10, 1950

**STATE OF VERMONT  
DEPARTMENT OF HIGHWAYS**

**PROPOSED IMPROVEMENT**

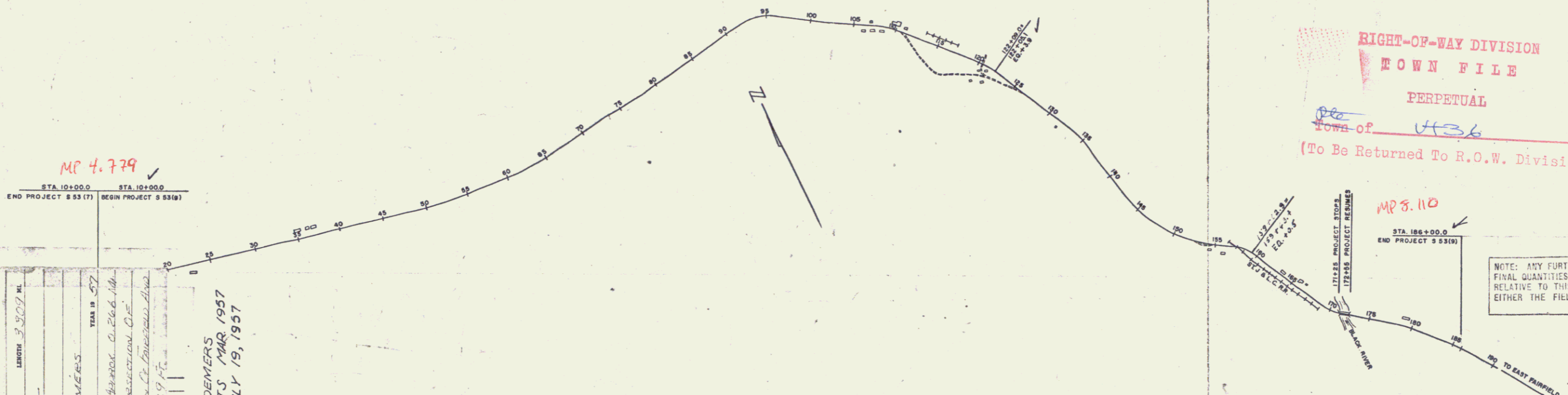
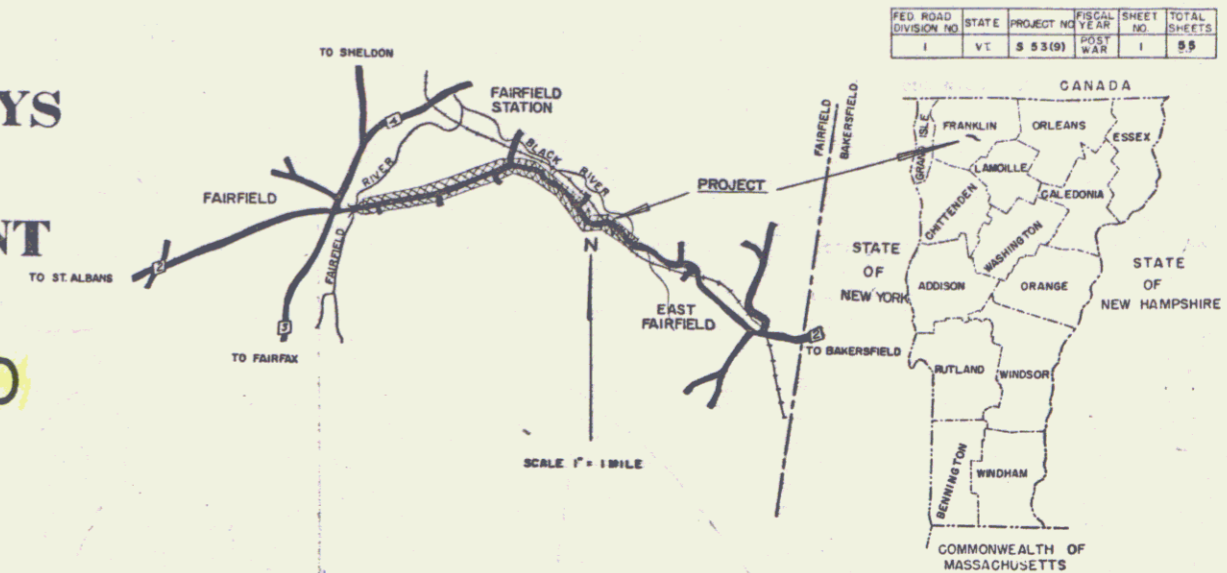
**TOWN OF FAIRFIELD  
COUNTY OF FRANKLIN  
STATE AID ROUTE 2  
FAIRFIELD-BAKERSFIELD ROAD**

FEDERAL AID  
SECONDARY PROJECT

BEGINNING AT A POINT APPROXIMATELY 0.266 MILES EASTERLY FROM THE INTERSECTION OF STATE AID ROUTES 2 AND 3 IN THE TOWN OF FAIRFIELD AND EXTENDING EASTERLY 17,473.9 FEET. LENGTH OF PROJECT 17,473.9 FEET = 3.309 MILES.

Pin # 99R96  
Route VT 36

PROJECT NAME & NUMBER	TYPE	PAVEMENT AREA
FAIRFIELD S 53 (9)	SINGLE TACK COAT	3,831 S.Y.
RECORD PLANS MATERIALS		
SUB-BASE OF GRAVEL MACOMBER PIT FAIRFIELD	R.C.P. VERMONT CONCRETE PIPE CO.	
CUTBACK ASPHALT ESSO STANDARD EVERETT, MASS	ACCG.M.P. NEW ENGLAND METAL CULVERT CO.	
PEASTONE FOR SEAL RUBBEROID CORP EDEN, VT.	CABLE FOR GUARD RAIL AMERICAN STEEL & WIRE NEW HAVEN, CONN.	
CONTRACTOR LUCIEN A. DEMIERS ST. ALBANS	CONTRACT DATED MAY 20, 1955	
RESIDENT ENG'R WALDEN J. SHULTS	CONTRACT STARTED JUNE 13, 1955	
INSPECTORS	CONTRACT COMPLETED JULY 19, 1956	
RECORD PLANS WALDEN J. SHULTS	CONTRACT ACCEPTED JULY 19, 1956	



MP 4.779

STA 10+00.0	STA 10+00.0
END PROJECT S 53 (7)	BEGIN PROJECT S 53 (9)

COUNTY	FRANKLIN
TOWN	FAIRFIELD
PROJECT	S 53 (9)
TYPE	SINGLE TACK COAT
CONTRACTOR	LUCIEN A. DEMIERS
LOCATION	Beginning At A Point About 0.266 Miles Easterly From The Intersection Of State Aid Routes 2 & 3 In The Town Of Fairfield, Vermont
LENGTH	17,473.9 FT.
YEAR	1955
RECORD PLANS	LUCIEN A. DEMIERS
CONST. COMPLETED	JULY 19, 1956

CURVE DATA	
DEFLECTION OF ANGLE	A
DEGREE OF CURVE	B
RADIUS OF CURVE	R
TANGENT DISTANCE	T
LENGTH OF CURVE	L
EXTERNAL DISTANCE	E
POINT OF INTERSECTION	P.I.
POINT OF CURVE	P.C.
POINT OF TANGENT	P.T.
POINT ON TANGENT	P.O.T.
POINT ON SUB-TANGENT	P.O.S.T.

**SCALES**

TITLE	1" = 600'
TYPICAL	1" = 2'
PLAN	1" = 50'
PROFILE HORIZONTAL	1" = 50'
PROFILE VERTICAL	1" = 10'
GROSS SECTIONS	1" = 5'

THESE PLANS ARE SUBJECT TO SUCH REVISIONS AS MAY BE REQUIRED BY THE BUREAU OF PUBLIC ROADS OR THE COMMISSIONER OF HIGHWAYS.

CONSTRUCTION IS TO BE CARRIED ON IN ACCORDANCE WITH THE PLANS AND THE STANDARD ROAD AND BRIDGE SPECIFICATIONS OF 1948, AS APPROVED JULY 25, 1949 BY THE BUREAU OF PUBLIC ROADS, INCLUDING ALL SUBSEQUENT APPROVED REVISIONS AND SUCH REVISED SPECIFICATIONS AND SPECIAL PROVISIONS AS ARE SUBMITTED WITH THE PLANS.

APPROVED CONSTRUCTION ENGINEER	APPROVED DISTRICT ENGINEER	APPROVED DISTRICT ENGINEER	APPROVED DISTRICT ENGINEER	APPROVED DISTRICT ENGINEER
DATE	DATE	DATE	DATE	DATE

DEPARTMENT OF COMMERCE  
BUREAU OF PUBLIC ROADS

APPROVED

DIVISION ENGINEER

PROJECT S NO. 53 (9)

SHEET 1 OF 55 SHEETS

WEBSTER-MARTIN INC. - CONSULTING ENGINEERS  
50, BURLINGTON, VT.





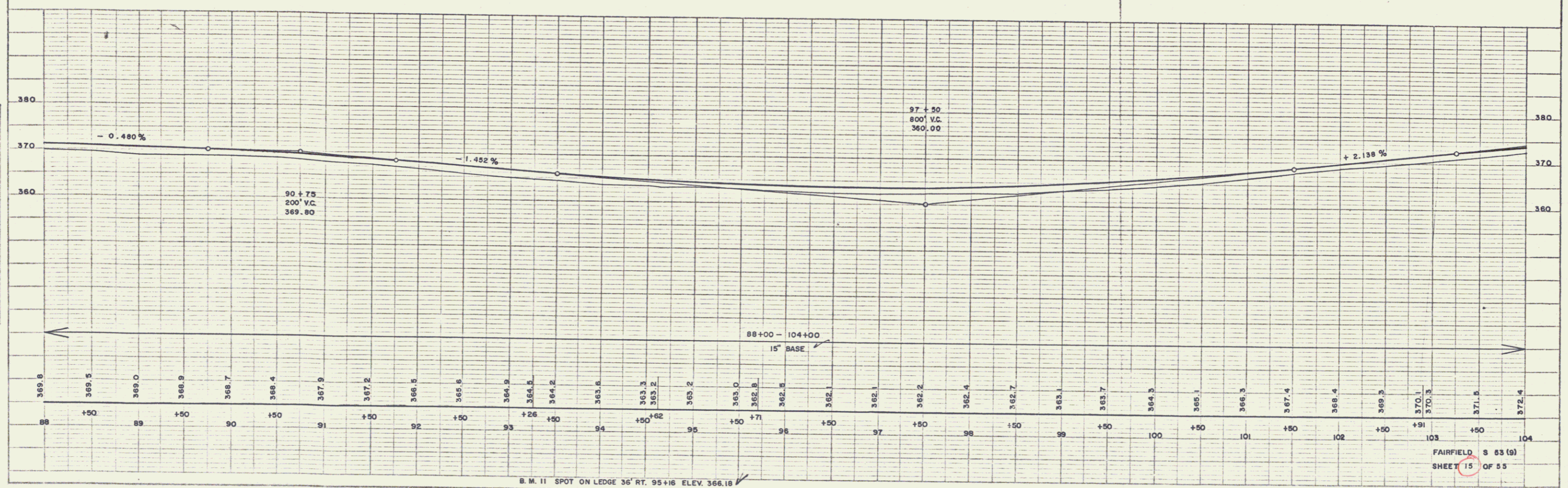
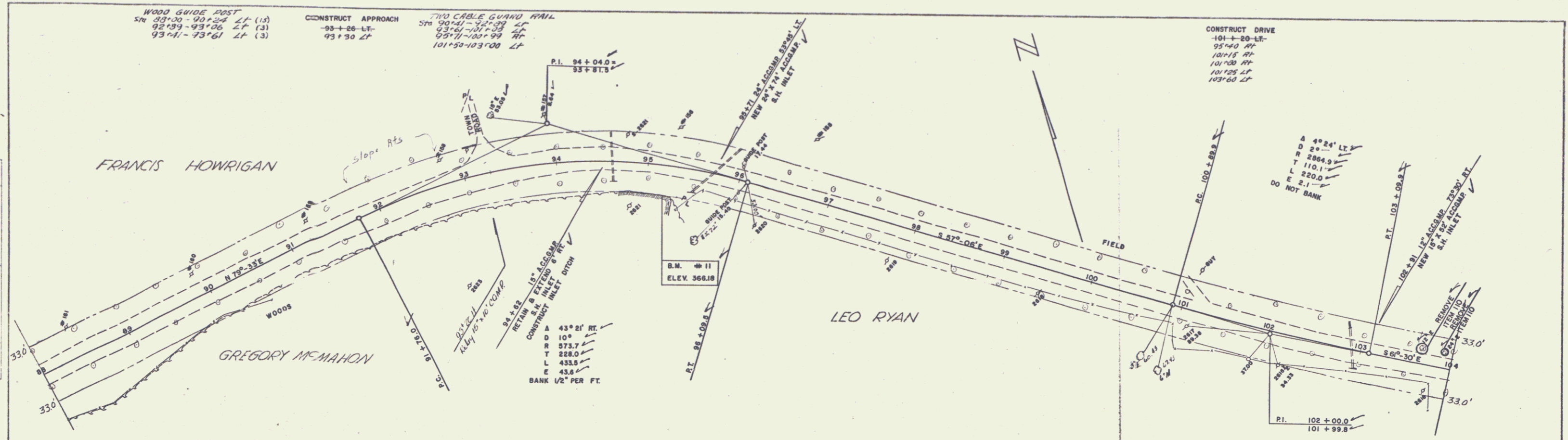






NO. 8-54  
 BRANDING  
 RESISTER-MARTIN INC. 10-54  
 NOTE: INK MUST BE USED IN ALL DIMENSIONS.  
 NO. 10-54

NO. 8-54  
 DELANO  
 RESISTER-MARTIN INC. 10-54  
 NOTE: INK MUST BE USED IN ALL DIMENSIONS.  
 NO. 10-54

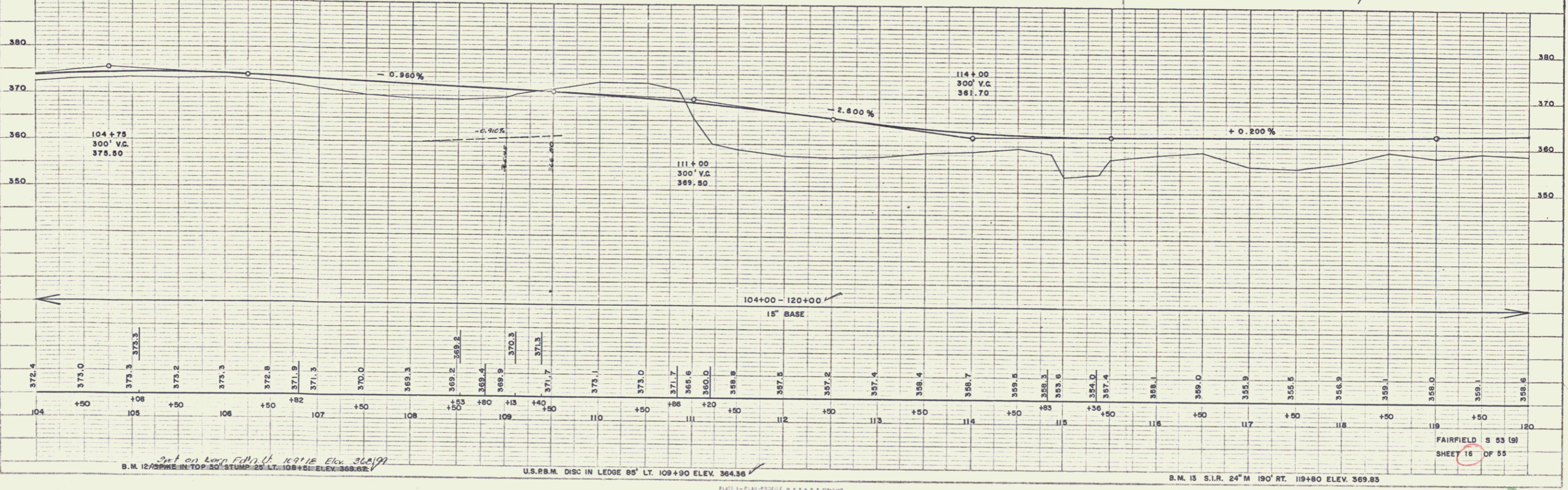
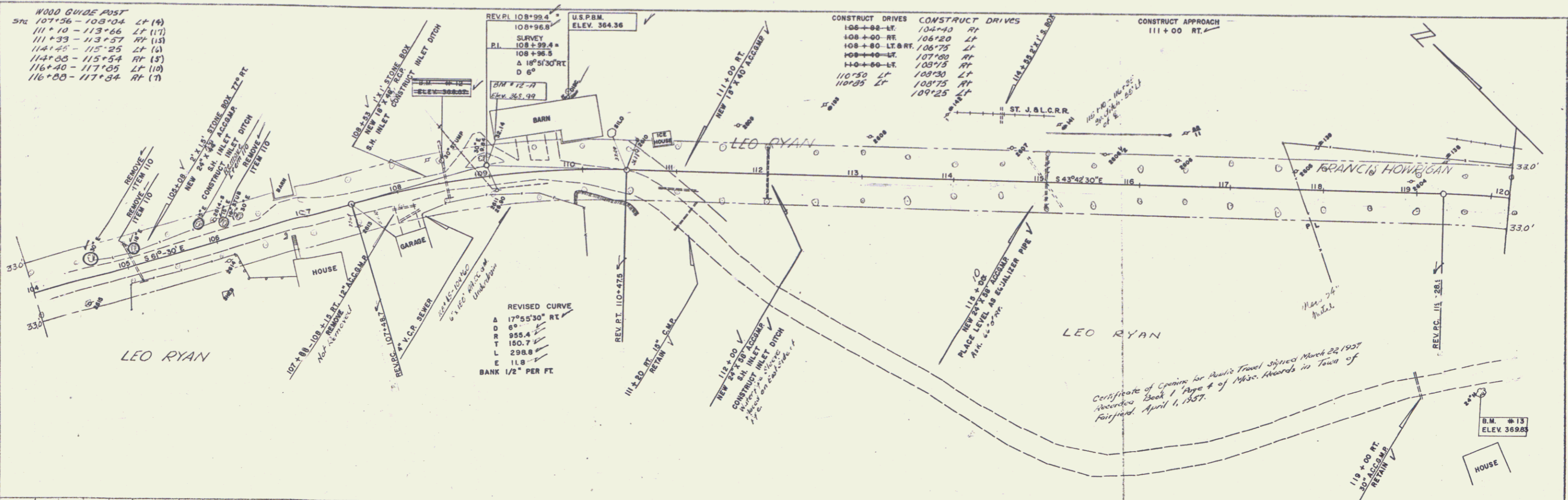


FAIRFIELD S 53 (9)  
 SHEET 15 OF 55

PLATE 1-7-FLY-PROFILE © P. M. & R. STANHOPE  
 400 WEST 47TH ST. NEW YORK  
 N.Y.C. No. 345-12

PLAN  
 DELAND WEBSTER-MARTIN INC. 10-54  
 DATE BOOK  
 NO.

DELAND WEBSTER-MARTIN INC. 10-54  
 DATE BOOK  
 NO.



B.M. 12 2 1/2" S.I.R. 24" M 190' RT. 119+80 ELEV. 369.83  
 U.S.P.M. DISC IN LEDGE 85' LT. 109+90 ELEV. 364.36  
 B.M. 13 4" S.I.R. 24" M 190' RT. 119+80 ELEV. 369.83

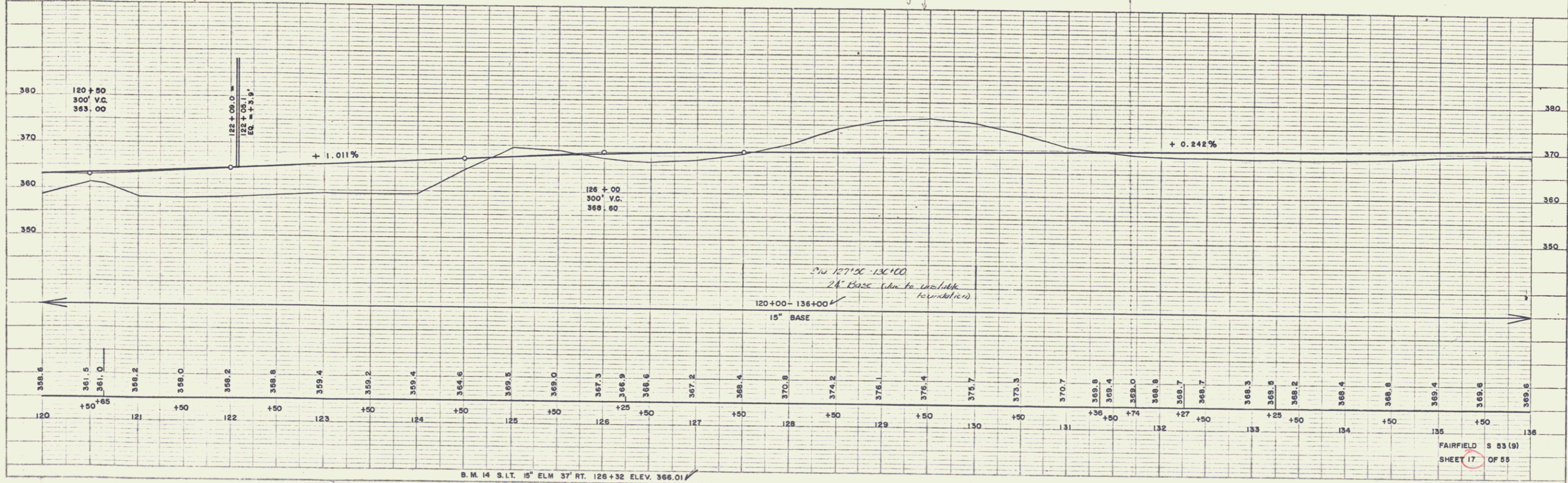
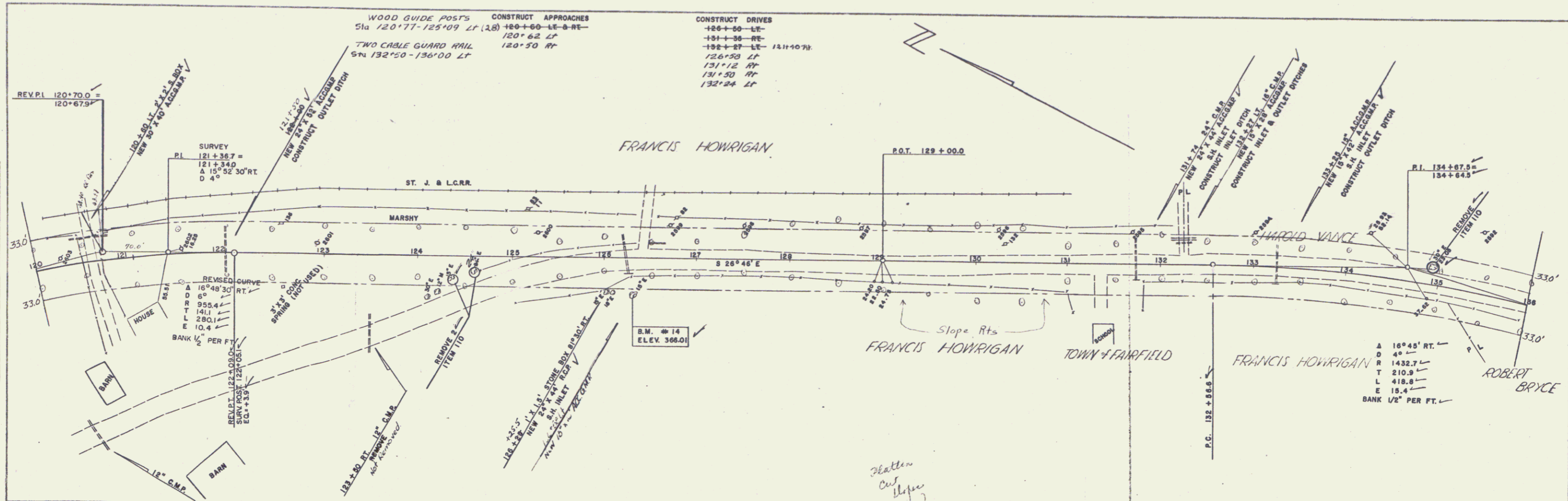
PLATE 1 - PLAN PROFILE OF P.A. & S. STAIRS  
 HOFFS, A. BESSER CO., NEW YORK  
 R & S CO. INC. 345 1/2  
 NEW YORK, N.Y.

FAIRFIELD S 53 (9)  
 SHEET 16 OF 55

8

PLAN  
 SPALDING  
 WESTER-MARTIN INC. 10-54  
 NOTE BOOK  
 REVISIONS  
 NO.

PROFILE  
 SPALDING  
 WESTER-MARTIN INC. 10-54  
 NOTE BOOK  
 REVISIONS  
 NO.



9



WOOD GUIDE POST  
Sta. 152+40 - 152+00 LT (A)  
153+32 - 156+32 LT (11)  
157+47 - 160+67 LT (10)

CONSTRUCT DRIVES  
153+20 - RT-  
154+32 - RT-  
155+30 - LT-  
156+40 - RT-  
157+40 - LT-  
158+00 - LT-  
159+56 - LT-

CONSTRUCT DRIVES  
153+10 RT  
153+25 LT  
155+30 RT  
153+00 LT  
153+40 RT  
154+00 LT  
155+10 LT  
156+20 LT  
156+40 LT

A 2° 03' LT  
D 110  
R 5729.7  
T 102.5  
L 208.0  
E 0.9  
DO NOT BANK

8-54  
PAULINE WESTER-MARTIN INC. 10-54  
ELEV. 374.3  
NOTE: SEE PLAN FOR LOCATION OF WOOD GUIDE POSTS

8-54  
PAULINE WESTER-MARTIN INC. 10-54  
ELEV. 374.3  
NOTE: SEE PLAN FOR LOCATION OF WOOD GUIDE POSTS

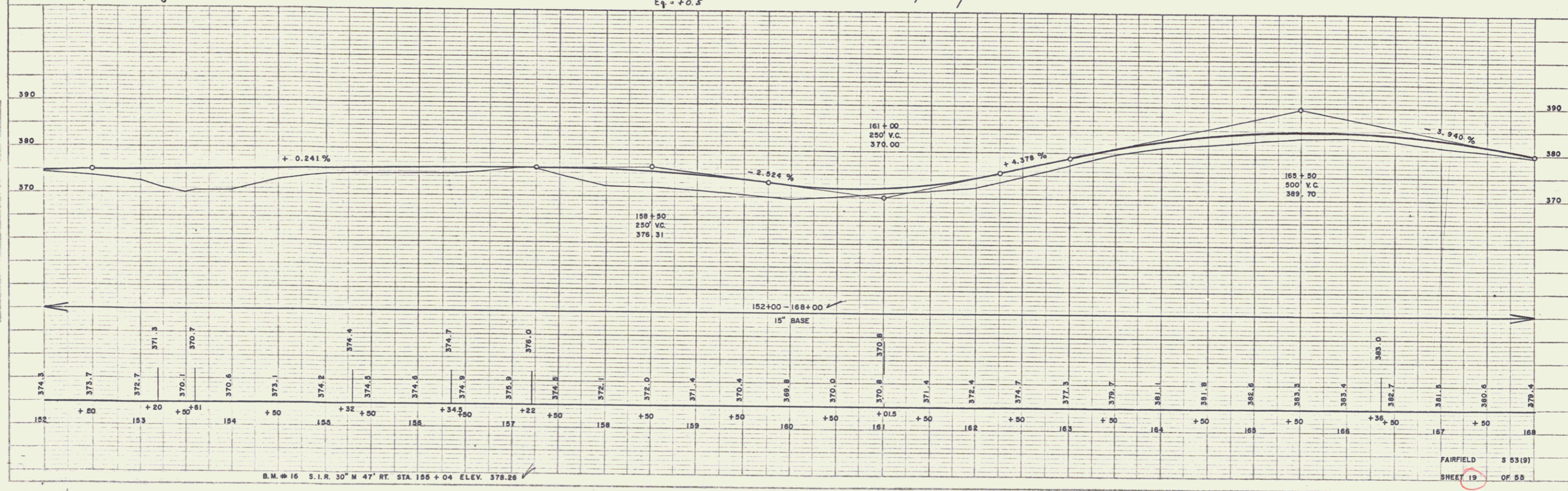
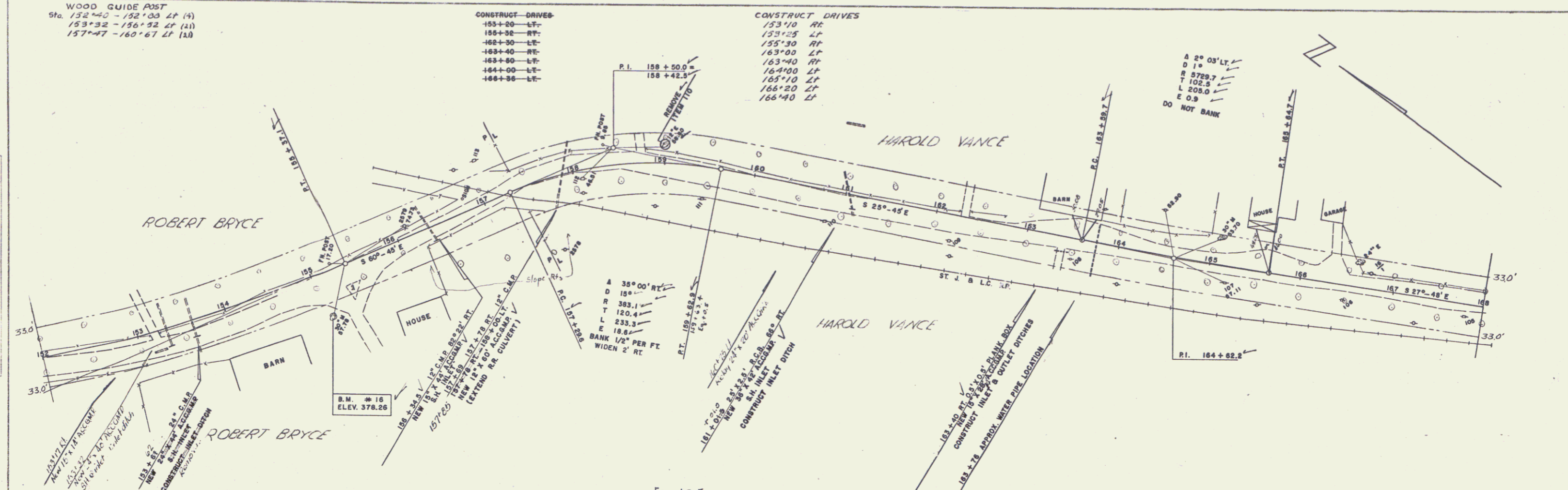


PLATE 1 - PLAN-PROFILE OF P.A. & S.E. STANDARD  
REVISED 10-54  
PAULINE WESTER-MARTIN INC.

SPALDING & WESTER-MARTIN INC. 8-54  
 WESTER-MARTIN INC. 8-54  
 PLIN  
 NOTE BOOK  
 DRAWING NO. 10-54  
 DATE  
 BY  
 CHECKED

SPALDING & WESTER-MARTIN INC. 8-54  
 WESTER-MARTIN INC. 8-54  
 PLIN  
 NOTE BOOK  
 DRAWING NO. 10-54  
 DATE  
 BY  
 CHECKED

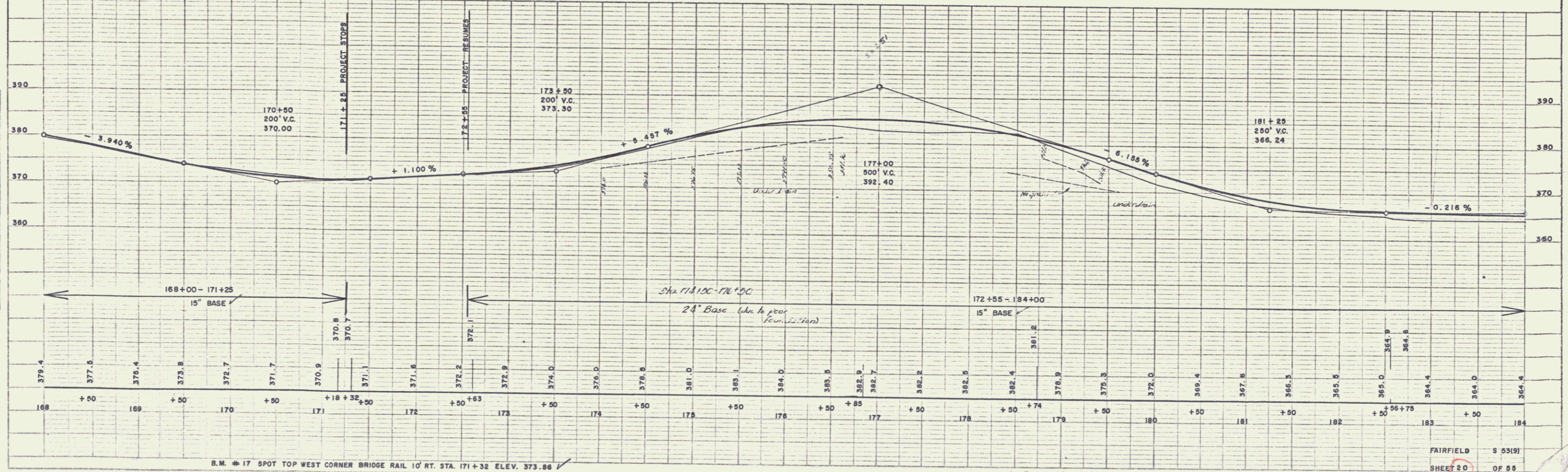
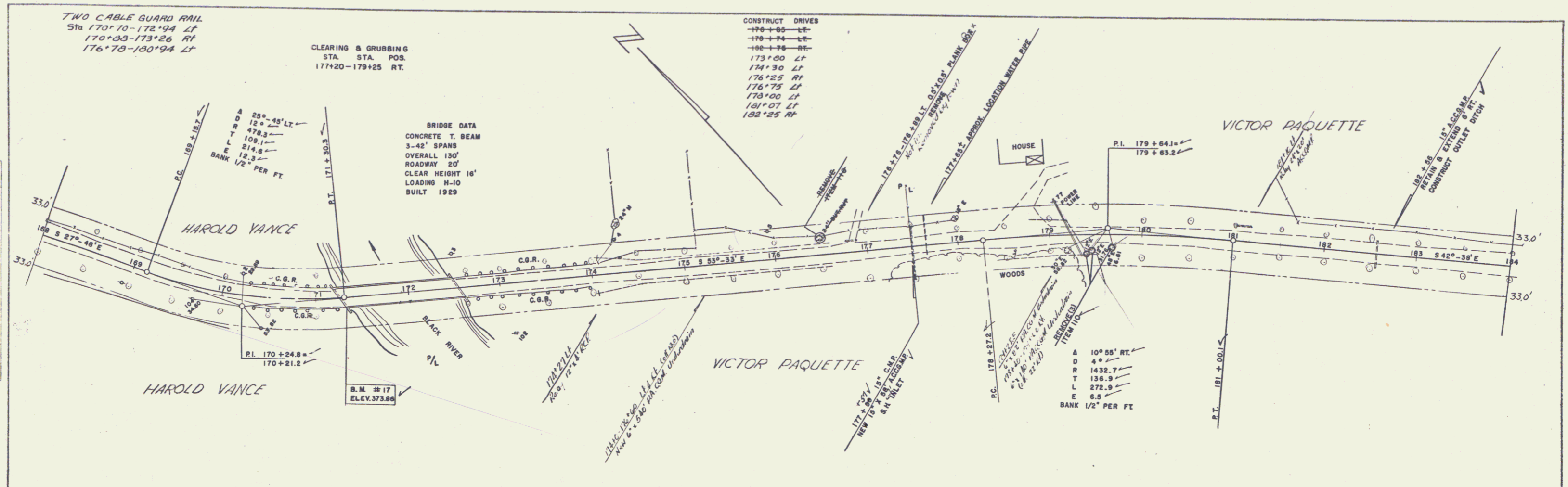


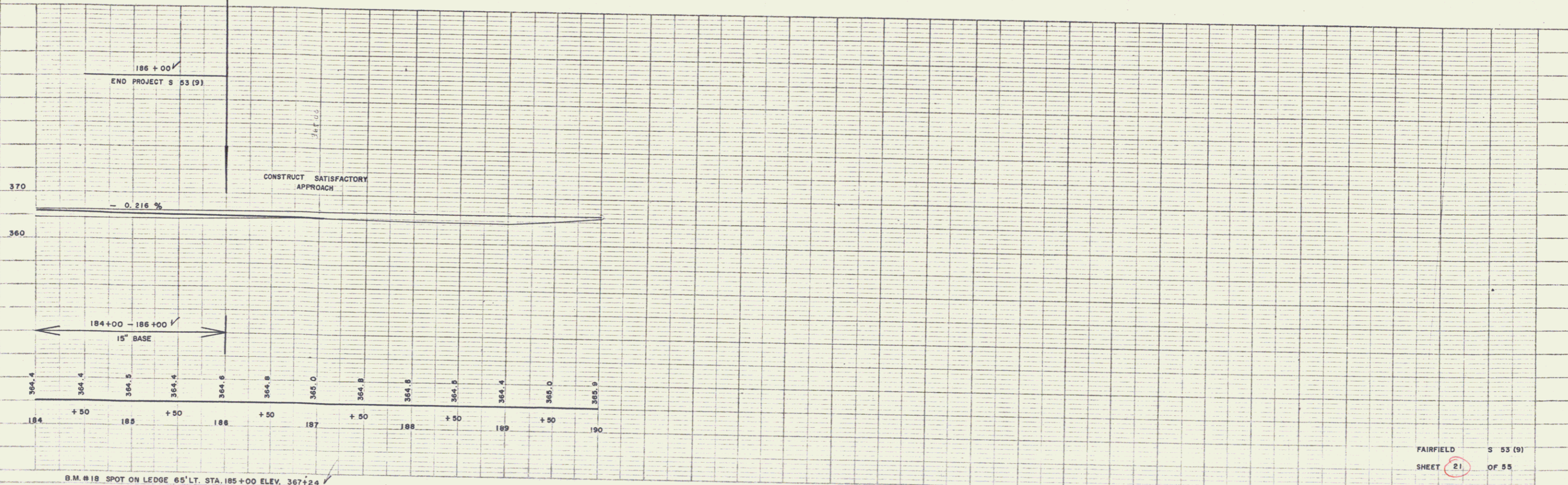
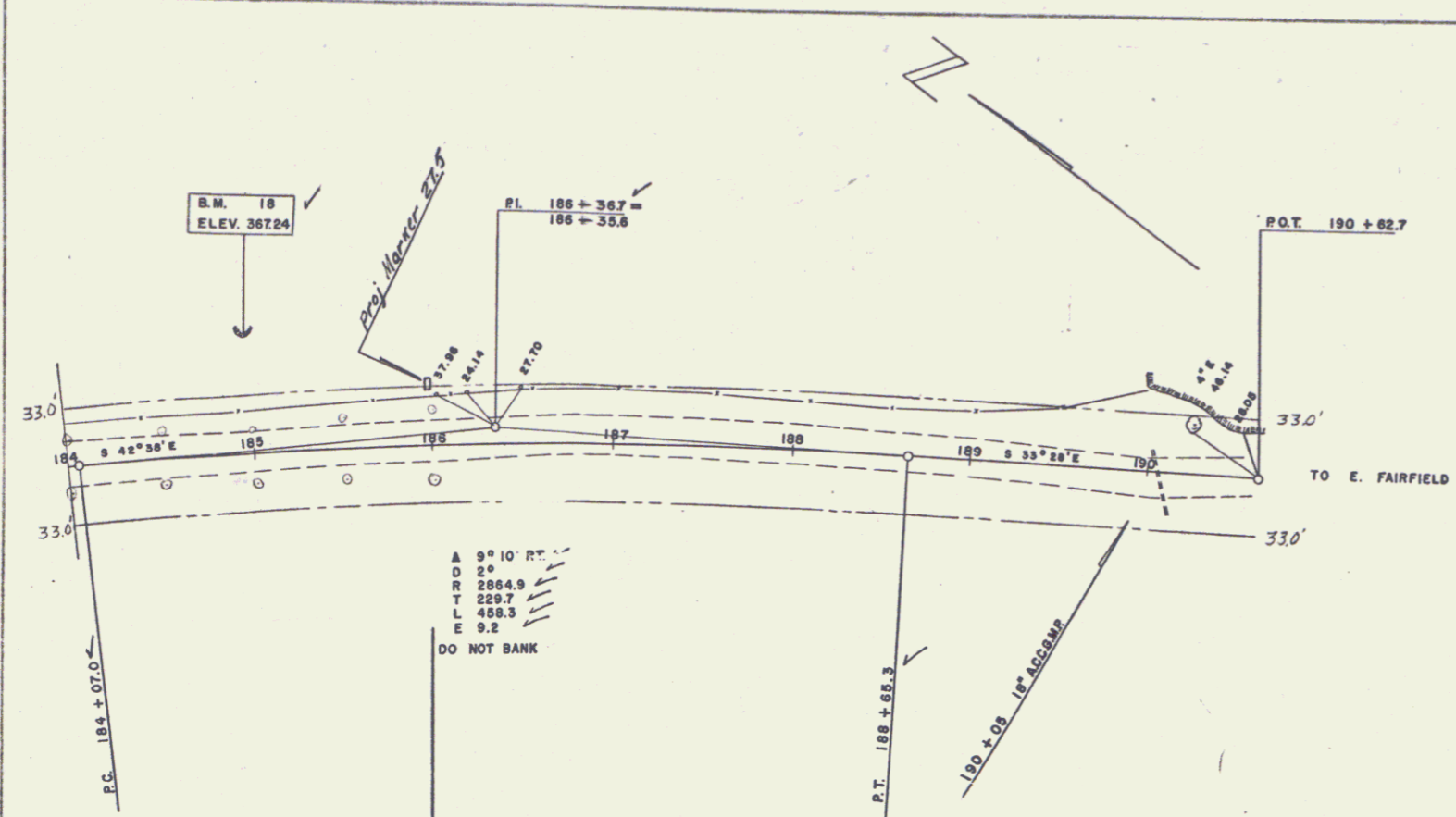
PLATE 1-100-PROF. 8-54 & 8-55  
 8-54 & 8-55  
 8-54 & 8-55

FAIRFIELD S 53101  
 SHEET 20 OF 55

12

PLAN  
 SPALDINE  
 WESTON - MARTIN INC.  
 12-34  
 10-34  
 NOTE BOOK  
 PLANNING CHECKS  
 10-34  
 10-34

SPALDINE  
 WESTON - MARTIN INC.  
 12-34  
 10-34  
 NOTE BOOK  
 PLANNING CHECKS  
 10-34  
 10-34



FAIRFIELD S 53 (9)  
 SHEET 21 OF 55