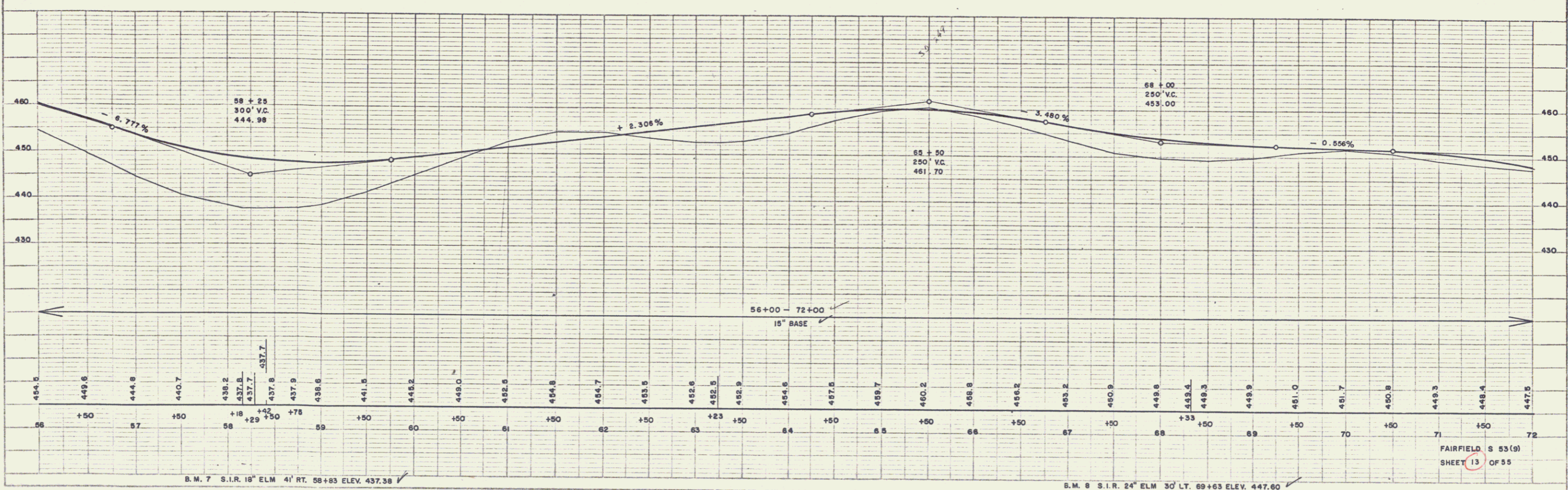
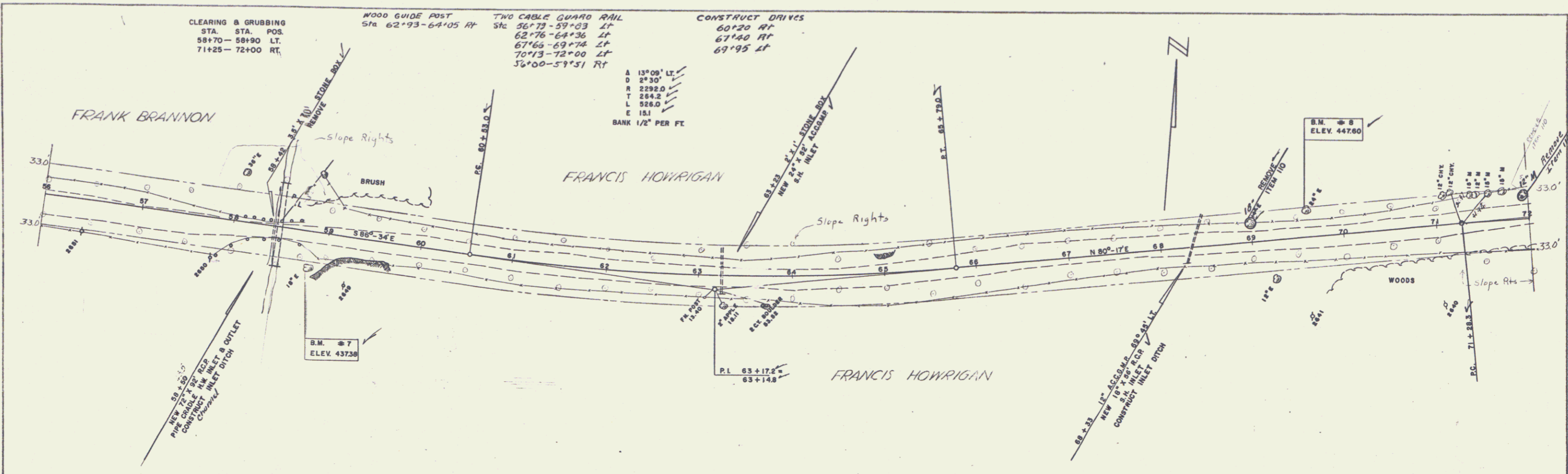


PLAN
 8-54
 SPALDING
 WEBSTER-MARTIN INC. 10-54
 NOTE: EOODS, SLOPES CHECKED
 BY: C. W. MARTIN, S.C.P.E.

PLAN
 8-54
 DELANO
 WEBSTER-MARTIN INC. 10-54
 NOTE: EOODS, SLOPES CHECKED
 BY: C. W. MARTIN, S.C.P.E.



CLEARING & GRUBBING
 STA. STA. POS.
 58+70 - 58+90 LT.
 71+25 - 72+00 RT.

WOOD GUIDE POST
 STA 62+93-64+05 RT.

TWO CABLE GUARD RAIL
 Sta 56+73-59+03 LT
 62+76-64+36 LT
 67+66-69+74 LT
 70+13-72+00 LT
 36+00-59+51 RT

CONSTRUCT DRIVES
 60+20 RT
 67+40 RT
 69+95 LT

A 13°09' LT
 D 2°30'
 T 2292.0
 L 284.5
 E 181
 BANK 1/2" PER FT

B.M. 7
 ELEV. 437.38

B.M. 8
 ELEV. 447.60

B.M. 7 S.I.R. 18" ELM 4' RT. 58+83 ELEV. 437.38

B.M. 8 S.I.R. 24" ELM 30' LT. 69+63 ELEV. 447.60

FAIRFIELD S 53(9)
 SHEET 13 OF 55

PLATE 1 - PLAN-TOP/LE & P.C.E. & S.D. STANDARD
 MAPS & SURVEYING CO., INC. P.O. BOX 100
 WAREHOUSING DIVISION

5