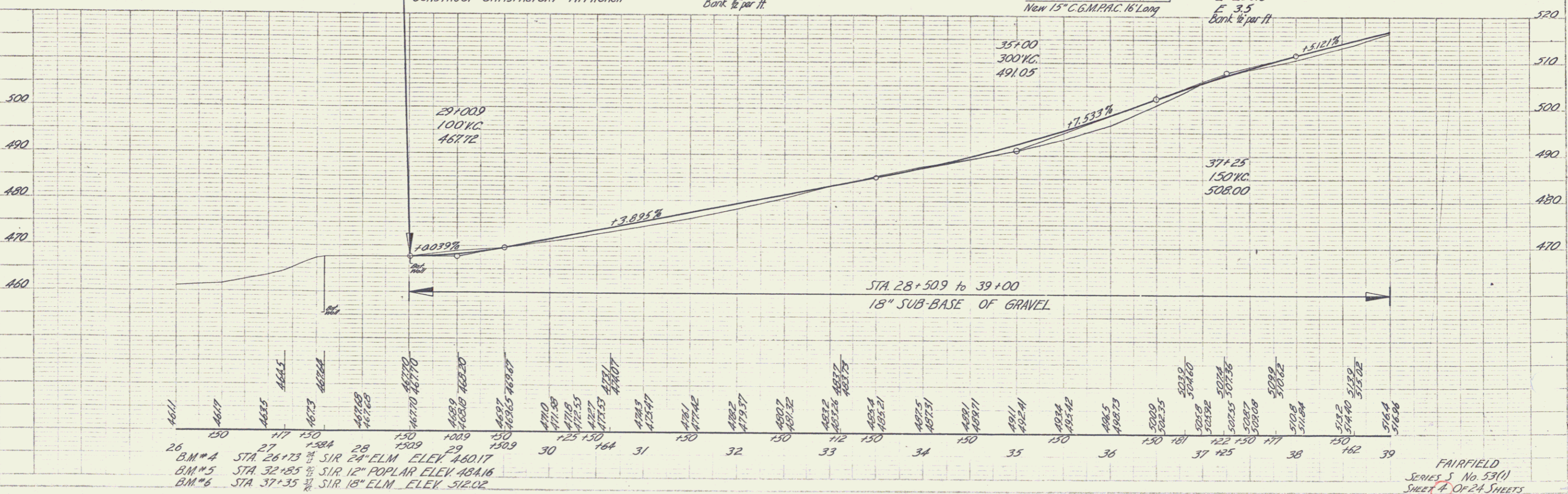
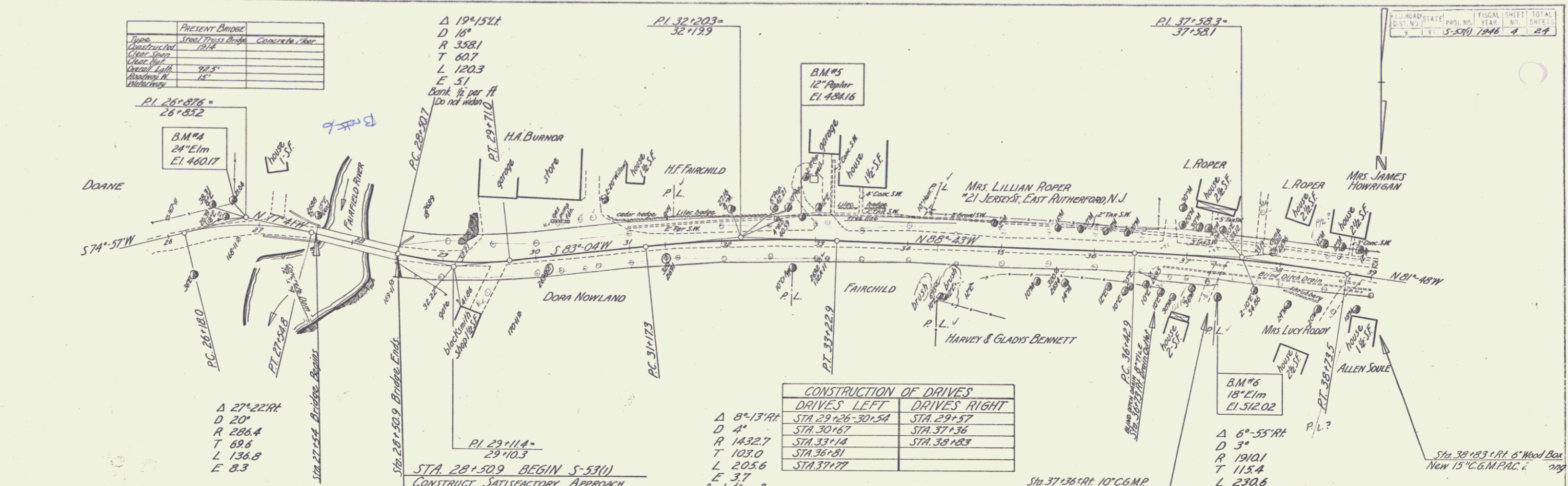


Present Bridge	
Type	Steel Truss Bridge
Constructed	1914
Clear Span	
Clear Height	32.5'
Approach H.	15'
Waterway	



26 B.M.#4 STA 26+73 SIR 24" ELM. ELEV. 460.17
 27 B.M.#5 STA 32+85 SIR 12" POPLAR ELEV. 484.16
 28 B.M.#6 STA 37+35 SIR 18" ELM. ELEV. 512.02