

INDEX OF SHEETS

SHEET NO. 1	TITLE PAGE
2	TYPICAL CROSS-SECTION OF IMPROVEMENT STABILIZED GRAVEL BASE COURSE OF OUTBACK ASPHALT WITH SAND SEAL, ITEM 303-5
3	BANKING AND WIDENING TABLES
4	QUANTITY SHEET (ITEMS AND DRAINAGE)
5-6	EARTHWORK SHEETS
7-10	PLAN AND PROFILE SHEETS
11	CONSTRUCTION DETAILS (DRAINAGE AND MARKERS)
12	CONSTRUCTION DETAILS CD-1 (DITCHES)
13	STANDARD STRUCTURE SHEET S 40 (BARRICADES, SIGNS & LIGHTS)
14-22	CROSS-SECTIONS

STANDARD STRUCTURE SHEET APPROVED BY THE CHIEF ENGINEER, VERMONT STATE DEPARTMENT OF HIGHWAYS.
S-40 JUNE 10 1950

PROJECT NAME & NUMBER		TYPE	PAVEMENT AREA
FAIRFIELD S 53(5)		STAB. GR. BASE	8 III. I. S. Y.
RECORD PLANS MATERIALS			
SAND BASE OF GRAVEL COLLINS PIT, FAIRFIELD, VT.		R. C. P. VT. CONC. PIPE CORP. WINDSOR, VT.	
SAND FOR SEAL EVANSON PLANT, SWANTON, VT.		ACCGMP NEW ENG. METAL PIPE CO. PALMER, MASS.	
ACCUAL TRINQUANT BIT. PROD. EVERETT, MASS.		BORROW PARTLOW, SOULE, GILLIAN PITS	
CONTRACTOR CAPUTO & FABBO CONS. CO. INC. MEDFORD, MASS.		CONTRACT DATED 8/25/52	
RES. ENGINEER H. G. GAREIS & R. J. FUNK		CONTRACT STARTED 9/2/52	
INSPECTOR H. RAYMOND		CONTRACT COMPLETED 6/23/53	
RECORD PLANS BY J. M. TURNER		CONTRACT ACCEPTED 6/23/53	

STATE OF VERMONT
STATE HIGHWAY DEPARTMENT

PLAN AND PROFILE OF PROPOSED
STATE HIGHWAY

SECONDARY PROJECT

TOWN OF FAIRFIELD

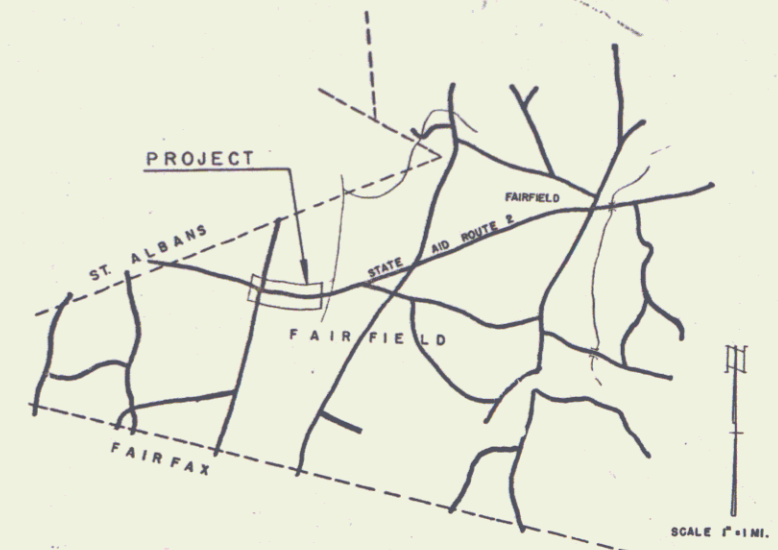
Pin # 99R958

Route VT. 36

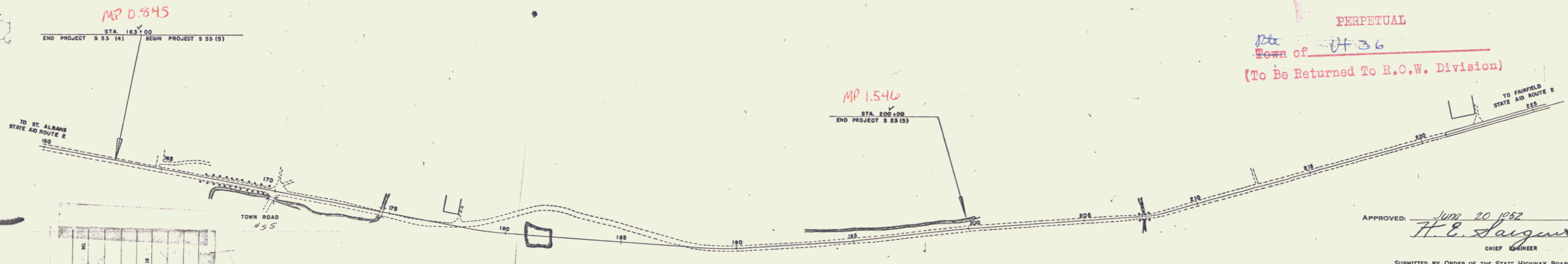
COUNTY OF FRANKLIN
STATE AID ROUTE 2
ST. ALBANS-FAIRFIELD ROAD

BEGINNING AT A POINT 4450 FEET EASTERLY OF THE ST. ALBANS-FAIRFIELD TOWN LINE AND EXTENDING EASTERLY 3,700 FEET.

LENGTH OF PROJECT 3,700 FT. = 0.701 MILES



RIGHT-OF-WAY DIVISION
TOWN FILE
PERPETUAL
Town of VT 36
(To Be Returned To R.O.W. Division)



APPROVED: June 20 1952
H. E. Sargent
CHIEF ENGINEER

SUBMITTED BY ORDER OF THE STATE HIGHWAY BOARD

NOTE: ANY FURTHER INFORMATION CONCERNING FINAL QUANTITIES, AMOUNTS OR OTHER DETAILS RELATIVE TO THIS PROJECT MAY BE FOUND IN EITHER THE FIELD BOOKS OR THE ESTIMATE FILE.

DEPARTMENT OF COMMERCE
BUREAU OF PUBLIC ROADS

RECOMMENDED FOR APPROVAL

DISTRICT ENGINEER DATE

APPROVED

DIVISION ENGINEER DATE

PROJECT S No. 53 (5) FILED
SHEET 1 OF 22

THESE PLANS ARE SUBJECT TO SUCH REVISIONS AS MAY BE REQUIRED BY THE BUREAU OF PUBLIC ROADS OR THE COMMISSIONER OF HIGHWAYS.
CONSTRUCTION IS TO BE CARRIED ON IN ACCORDANCE WITH THE PLANS AND THE STANDARD ROAD AND BRIDGE SPECIFICATIONS OF 1948, AS APPROVED JULY 25 1949 BY THE BUREAU OF PUBLIC ROADS - INCLUDING ALL SUBSEQUENT APPROVED REVISIONS AND SUCH REVISED SPECIFICATIONS AND SPECIAL PROVISIONS AS ARE SUBMITTED WITH THE PLANS.

APPROVED	APPROVED <u>June 19 1952</u>	APPROVED <u>June 19 1952</u>	APPROVED <u>June 19 1952</u>
CONSTRUCTION ENGINEER	SECONDARY ENGINEER	HIGHWAY ENGINEER	DISTRICT ENGINEER

M

NO.	LENGTH	SECTION
1		
2		
3		
4		
5		
6		
7		
8		
9		
10		
11		
12		
13		
14		
15		
16		
17		
18		
19		
20		
21		
22		

GROUND ELEVATION	BATHY LINE
GRADE ELEVATION	EXP. LINE

CURVE DATA

DEFLECTION ANGLE	Δ
DEGREE OF CURVE	D
RADIUS OF CURVE	R
TANGENT DISTANCE	T
LENGTH OF CURVE	L
EXTERNAL DISTANCE	E
POINT OF INTERSECTION	P. I.
POINT OF CURVE	P. C.
POINT OF TANGENT	P. T.
POINT ON TANGENT	P. O. T.

FAIRFIELD S 53(5)
CONTRACTOR - CAPUTO & FABBO CONST. CO. INC.
RECORD PLANS - J. M. TURNER
CONSTRUCTION COMPLETED 6/23/53

SCALES

TITLE	1" = 200'
TYPICAL	1" = 1'
PLAN	1" = 50'
PROFILE HORIZONTAL	1" = 50'
PROFILE VERTICAL	1" = 10'
CROSS SECTIONS	1" = 8"

PLAN
 DRAWN BY
 L. H. HARRIS
 CHECKED BY
 W. L. S. JR.
 DATE
 11-27-31

PROFILE
 DRAWN BY
 L. H. HARRIS
 CHECKED BY
 W. L. S. JR.
 DATE
 11-27-31

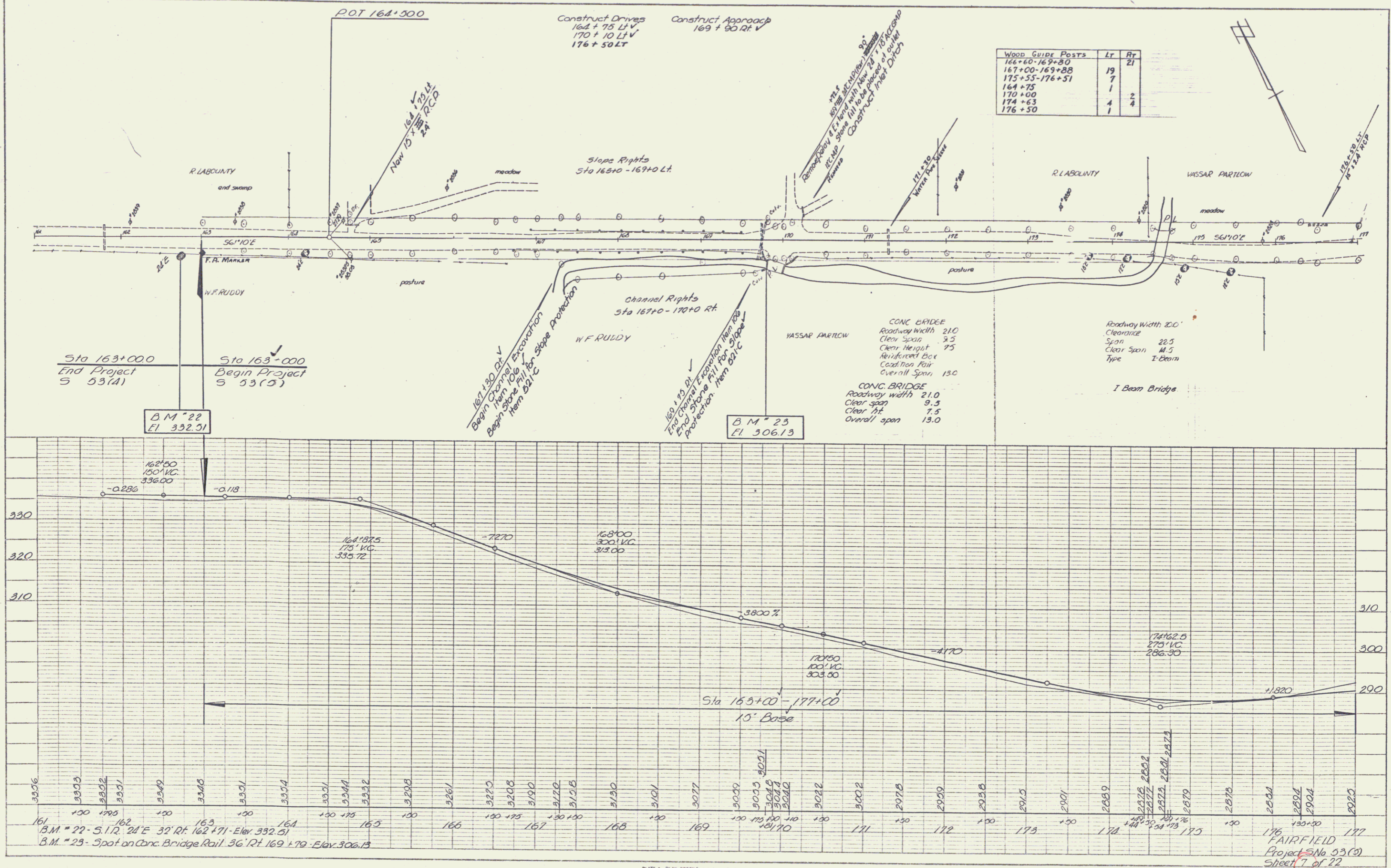


PLATE 1 - PLAN - PROFILE
 ASBUTTE & EMER CO. INC. PERS.
 P. E. & C. Co. No. 248-10

FAIRFIELD
 Project No 53(5)
 Sheet 7 of 22

PLAN
 DATE: 1/28/27
 DRAWN BY: M. J. MURPHY
 CHECKED BY: N.L.S.F.
 PROJECT: VASSAR PARTLOW
 FACILITY: HIGHWAY
 NOTE BOOK: 178
 HT. OF INSTRUMENT: 5.1
 HT. OF VANT GROUND: 2.96

PROFILE
 DATE: 1/28/27
 DRAWN BY: M. J. MURPHY
 CHECKED BY: N.L.S.F.
 PROJECT: VASSAR PARTLOW
 FACILITY: HIGHWAY
 NOTE BOOK: 178
 HT. OF INSTRUMENT: 5.1
 HT. OF VANT GROUND: 2.96

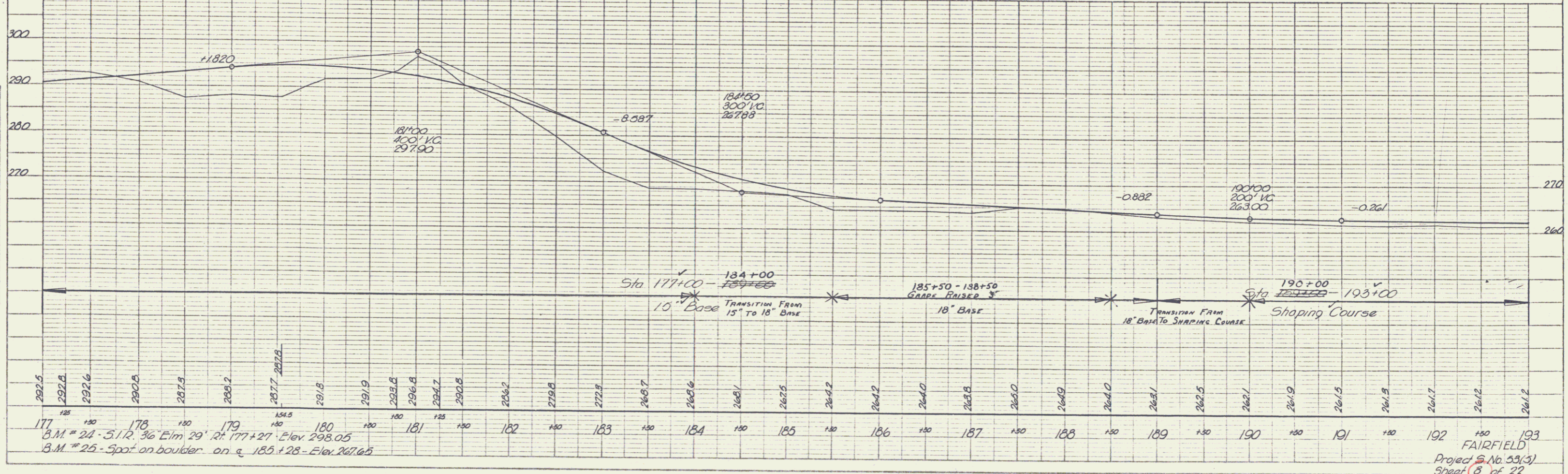
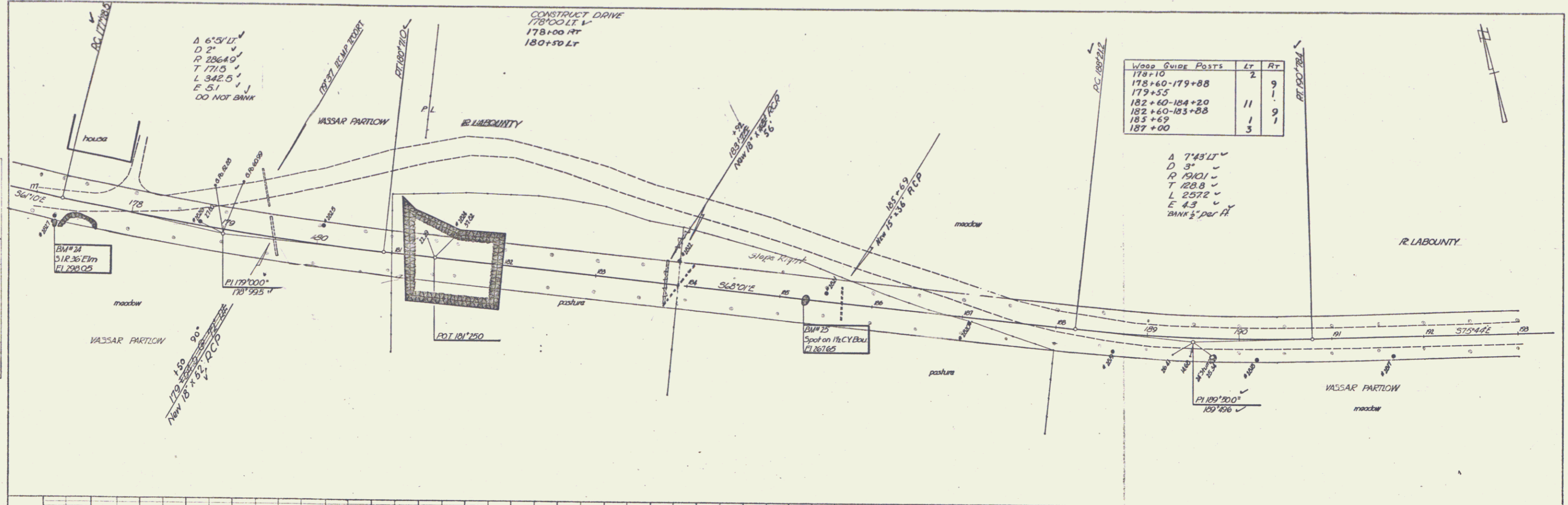


PLATE 1 - PLAN - PROFILE
 SCALE: 1" = 40' (PLAN), 1" = 10' (PROFILE)
 DATE: 1/28/27

FAIRFIELD
 Project No. 33(3)
 Sheet 8 of 27
 3

PLAN
 OPERATOR: Linn Murray
 DATE: 1/18/19
 PROJECT: FAIRFIELD
 SHEET: 9 of 22
 NOTE: BOOK BY OF THIS SHEET: N.L.S.E.

PROFILE
 OPERATOR: Linn Murray
 DATE: 1/18/19
 PROJECT: FAIRFIELD
 SHEET: 9 of 22
 NOTE: BOOK BY OF THIS SHEET: N.L.S.E.

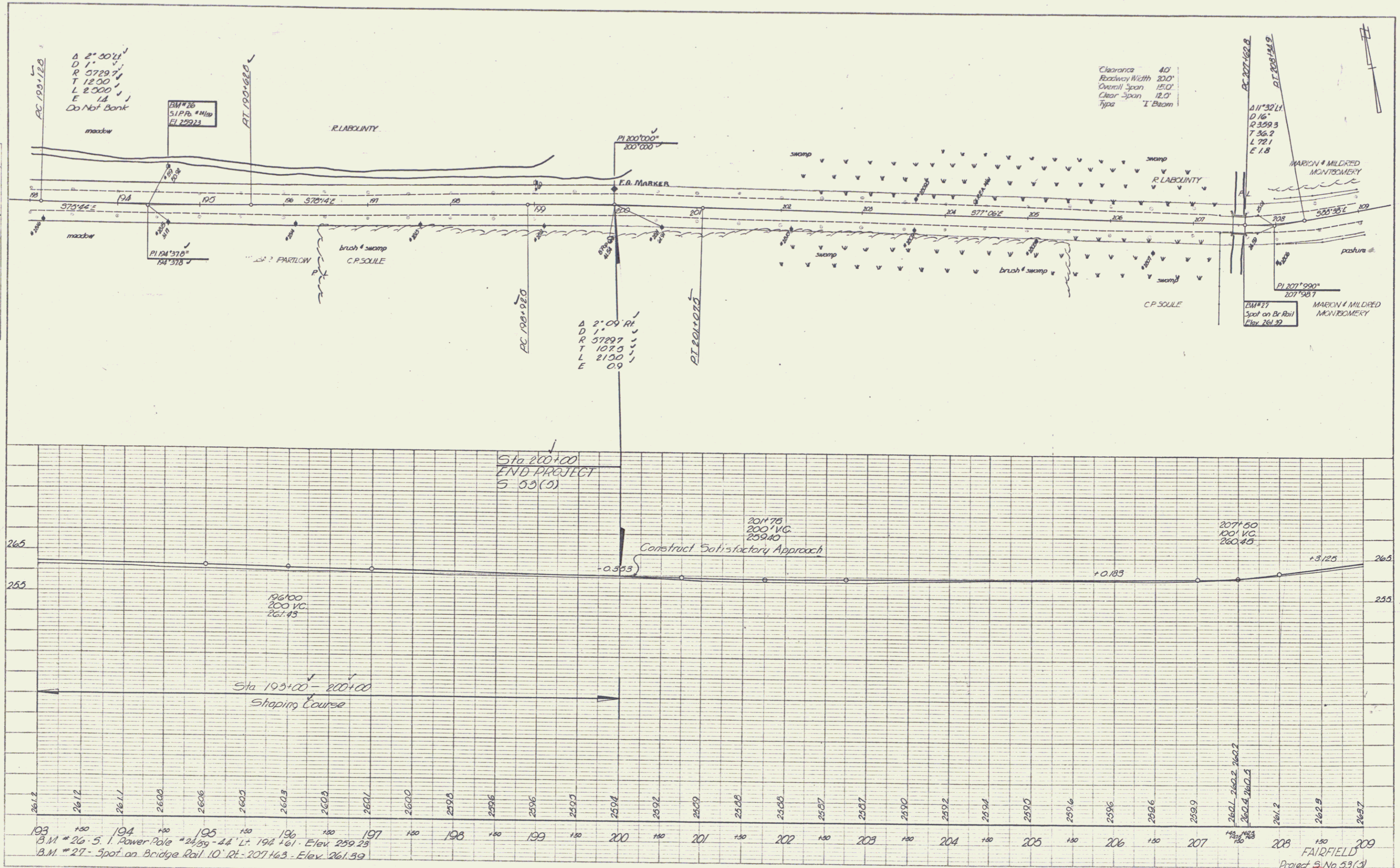
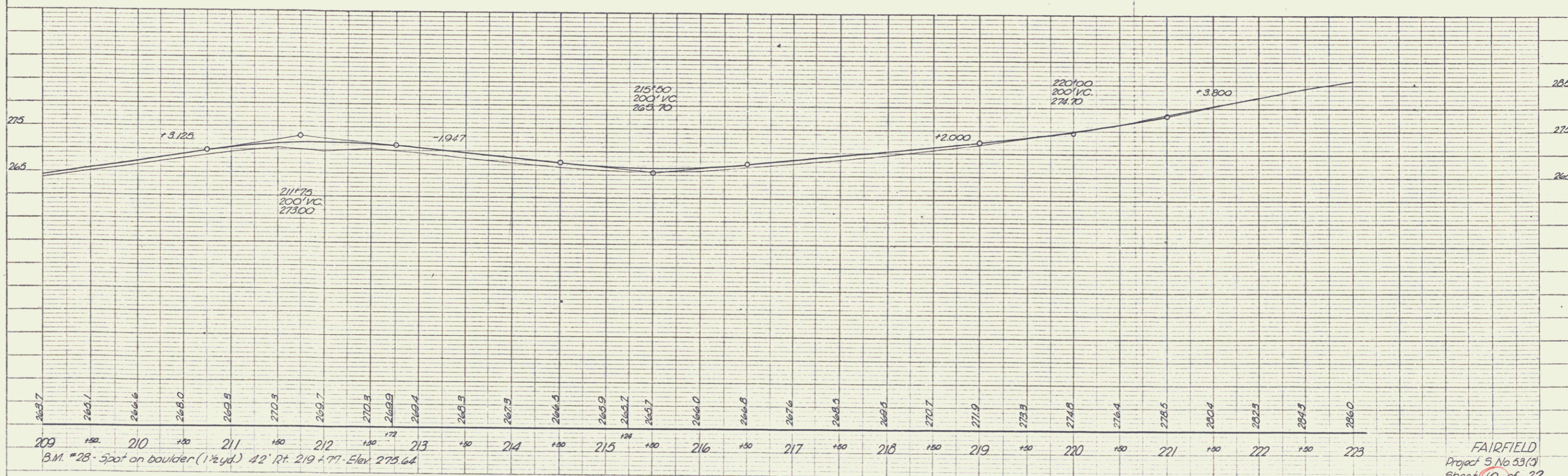
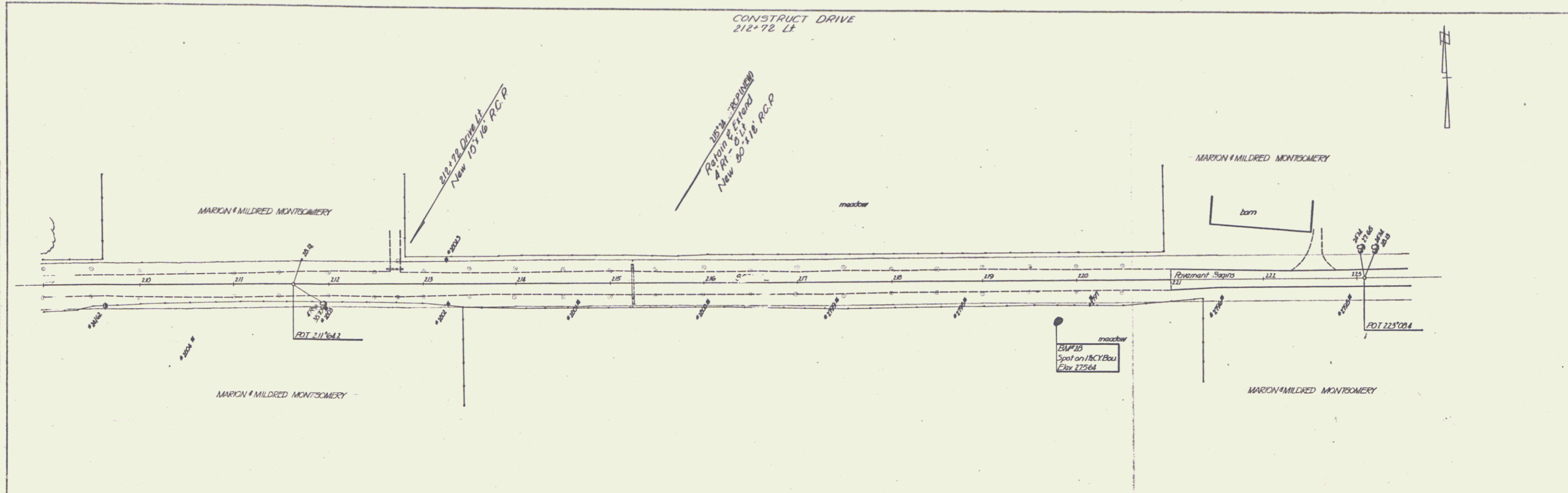


PLATE 1 - PLAN PROFILE D. P. & R. E. STINARD
 FAIRFIELD & MILBRED MONTEBERRY
 PROJECT NO. 1481

FAIRFIELD
 Project No. 53(3)
 Sheet 9 of 22

PLAN
 PROJECT: *Conroy Murray*
 SHEET NO.: *100*
 DATE: *1/28*
 DRAWN BY: *M.S.P.*

PROFILE
 PROJECT: *Conroy Murray*
 SHEET NO.: *100*
 DATE: *1/28*
 DRAWN BY: *M.S.P.*



FAIRFIELD
 Project 5 No 53(9)
 Sheet 10 of 22

PLATE 1 - PLAN-PROFILE & P & R & S STATIONS
 REVISIONS & ELEVATION CORRECTIONS
 R.E.P. Co. No. 248-11

5