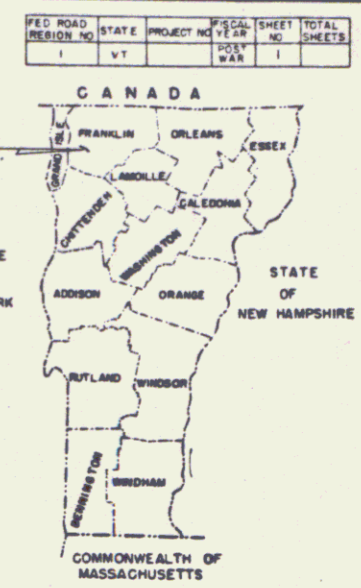
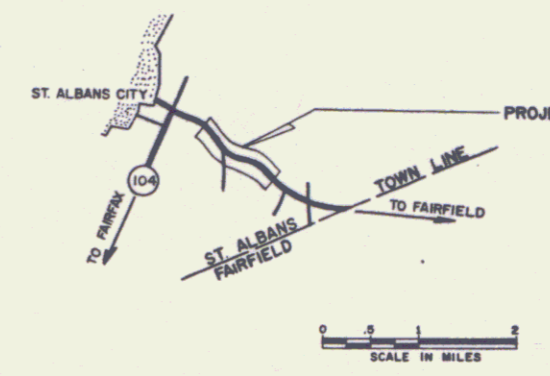
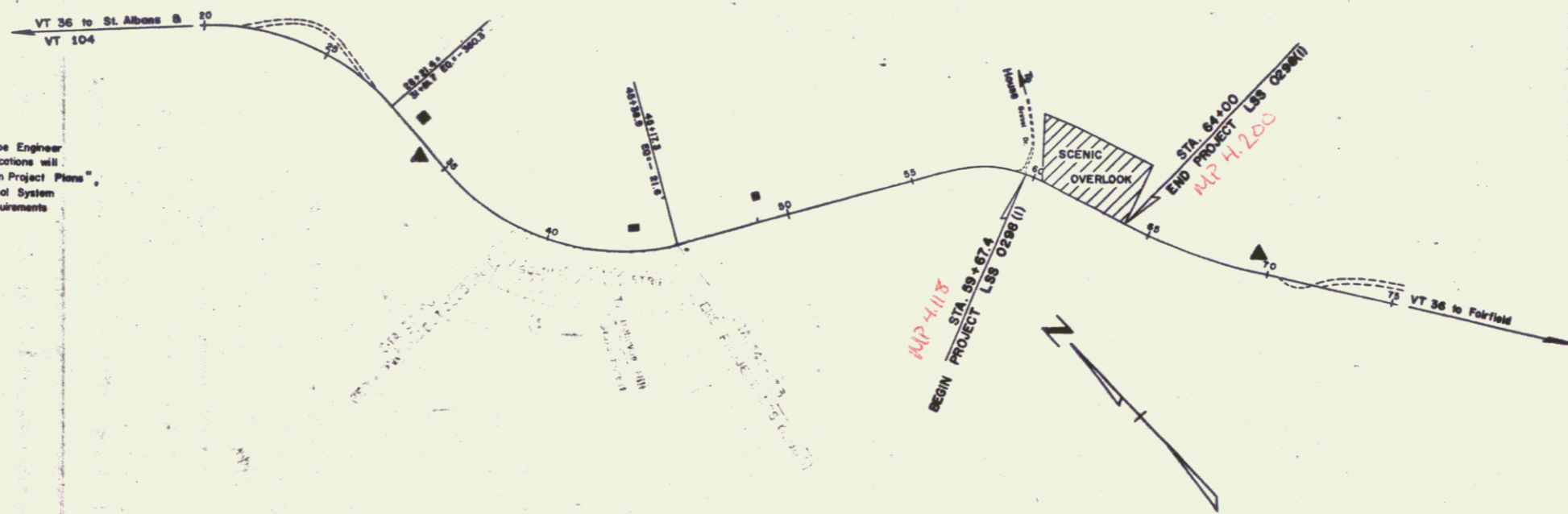


INDEX OF SHEETS
SHEET NO. 1 TITLE SHEET

STATE OF VERMONT
DEPARTMENT OF HIGHWAYS
PROPOSED IMPROVEMENT
TOWN OF ST. ALBANS
COUNTY OF FRANKLIN
VT. ROUTE 36
ST. ALBANS CITY - FAIRFIELD ROAD



BEGINNING AT A POINT 1.092 MILES EASTERLY OF THE INTERSECTION OF VT. RTE. 104 AND EXTENDING EASTERLY 0.082 MILE.
LENGTH OF PROJECT 0.082 MILE



The specific location of each shrub and tree will be made by the State Landscape Engineer in the field prior to any planting being performed by the Contractor. Such locations will be in accordance with the 1959 "Guide for Showing Roadside Improvements on Project Plans", the 1961 A.A.S.H.O. Publication "A Policy on Landscape Development for the National System of Interstate and Defense Highways", and any other supplementary location requirements which are now or may become effective.

CONVENTIONAL SIGNS

- COUNTY LINE
- TOWN LINE
- FENCE LINE
- STONE WALL
- UNFENCED PROPERTY
- GUARD RAIL
- TRAVELED WAY
- RAILROAD
- RETAINING WALL
- CENTER LINE
- SURVEY LINE
- CULVERT
- DROP INLET
- TROLLEY POLE
- POWER POLE
- TELEPHONE POLE
- TREES
- HEDGE

GROUND ELEVATION
GRADE ELEVATION

CURVE DATA
DEFLECTION OF ANGLE
DEGREE OF CURVE
RADIUS OF CURVE
TANGENT DISTANCE
LENGTH OF CURVE
EXTERNAL DISTANCE
POINT OF INTERSECTION
POINT OF CURVE
POINT OF TANGENT
POINT ON TANGENT
POINT ON SUB-TANGENT

FEDERAL AID CONSTRUCTION SIGN
SCALES
TITLE
TYPICAL
PLAN
PROFILE
HORIZONTAL
VERTICAL
CROSS-SECTIONS

RIGHT-OF-WAY DIVISION
TOWN FILE
PERPETUAL
Town of St. Albans
(To Be Returned To R.O.W. Division)

THESE PLANS ARE SUBJECT TO SUCH REVISIONS AS MAY BE REQUIRED BY THE BUREAU OF PUBLIC ROADS OR THE COMMISSIONER OF HIGHWAYS.
CONSTRUCTION IS TO BE CARRIED ON IN ACCORDANCE WITH THESE PLANS AND THE STANDARD SPECIFICATIONS FOR HIGHWAY AND BRIDGE CONSTRUCTION DATED APRIL, 1964, AS APPROVED BY THE BUREAU OF PUBLIC ROADS ON OCTOBER 12, 1964 INCLUDING ALL SUBSEQUENT APPROVED REVISIONS AND SUCH REVISED SPECIFICATIONS AND SPECIAL PROVISIONS AS ARE INCORPORATED IN THESE PLANS.

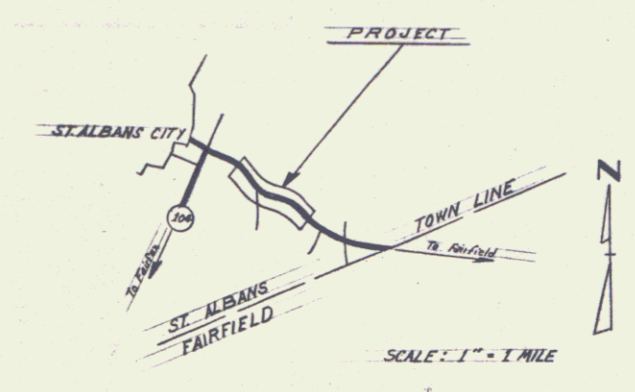
APPROVED *E. V. Beckney* 6/3/66
APPROVED *R. L. Lumb* 6/3/66
APPROVED *W. J. Lockhart* May 31, 1966
APPROVED *D. M. [unclear]* June 1, 1966
APPROVED *G. M. Lane* 5/31/66
APPROVED *R. H. [unclear]* 6/2/66

DEPARTMENT OF COMMERCE
BUREAU OF PUBLIC ROADS

APPROVED _____ DIVISION ENGINEER DATE _____

PROJECT L.S.S. NO. 0288(1)

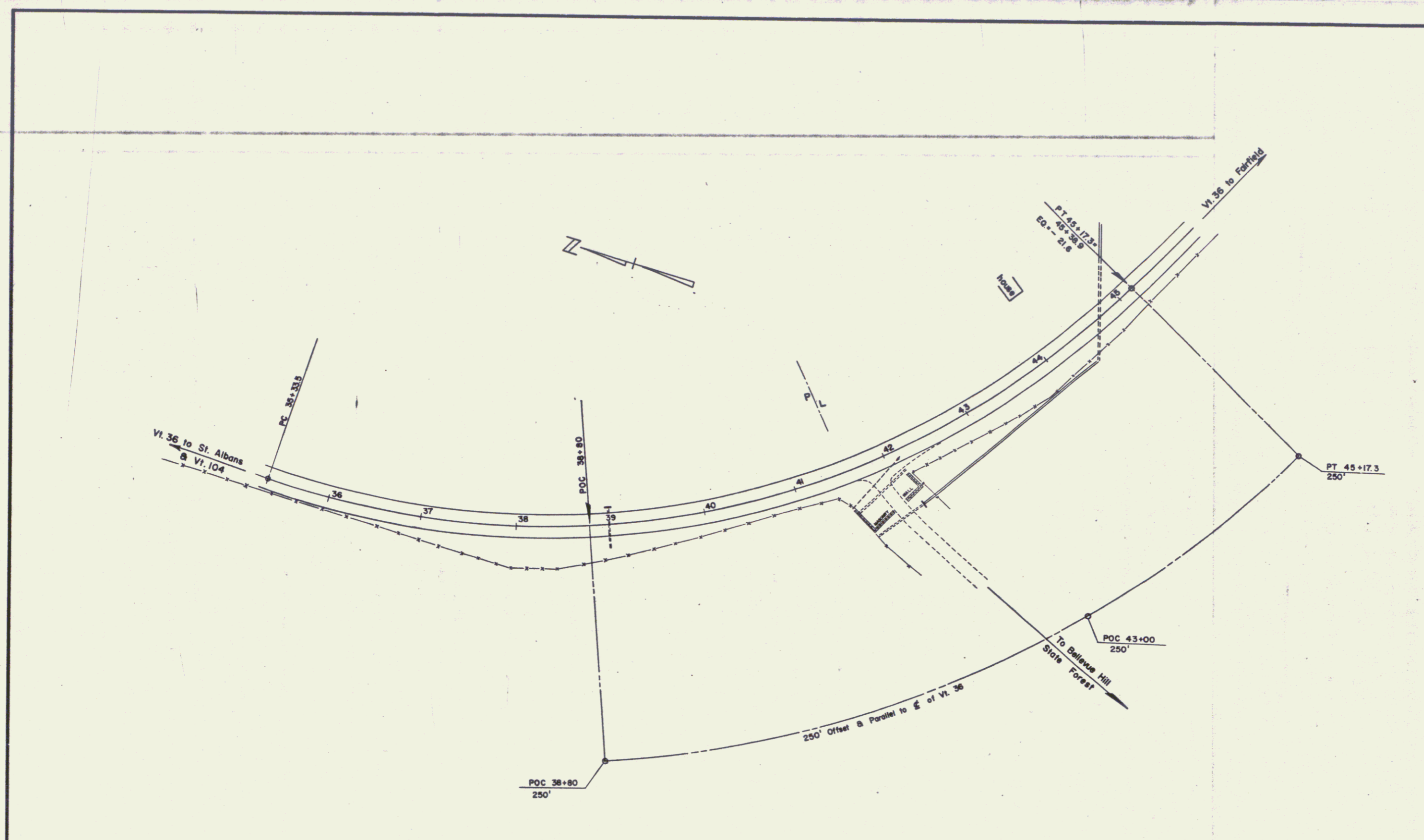
SHEET 1 OF 1 SHEETS



PROJECT: LSS 0298(1) VI 36
 Title Page
 Drawn by: Fred McCoy Date: 5/66/66
 Scale: 1" = 300'

SHEET 1A

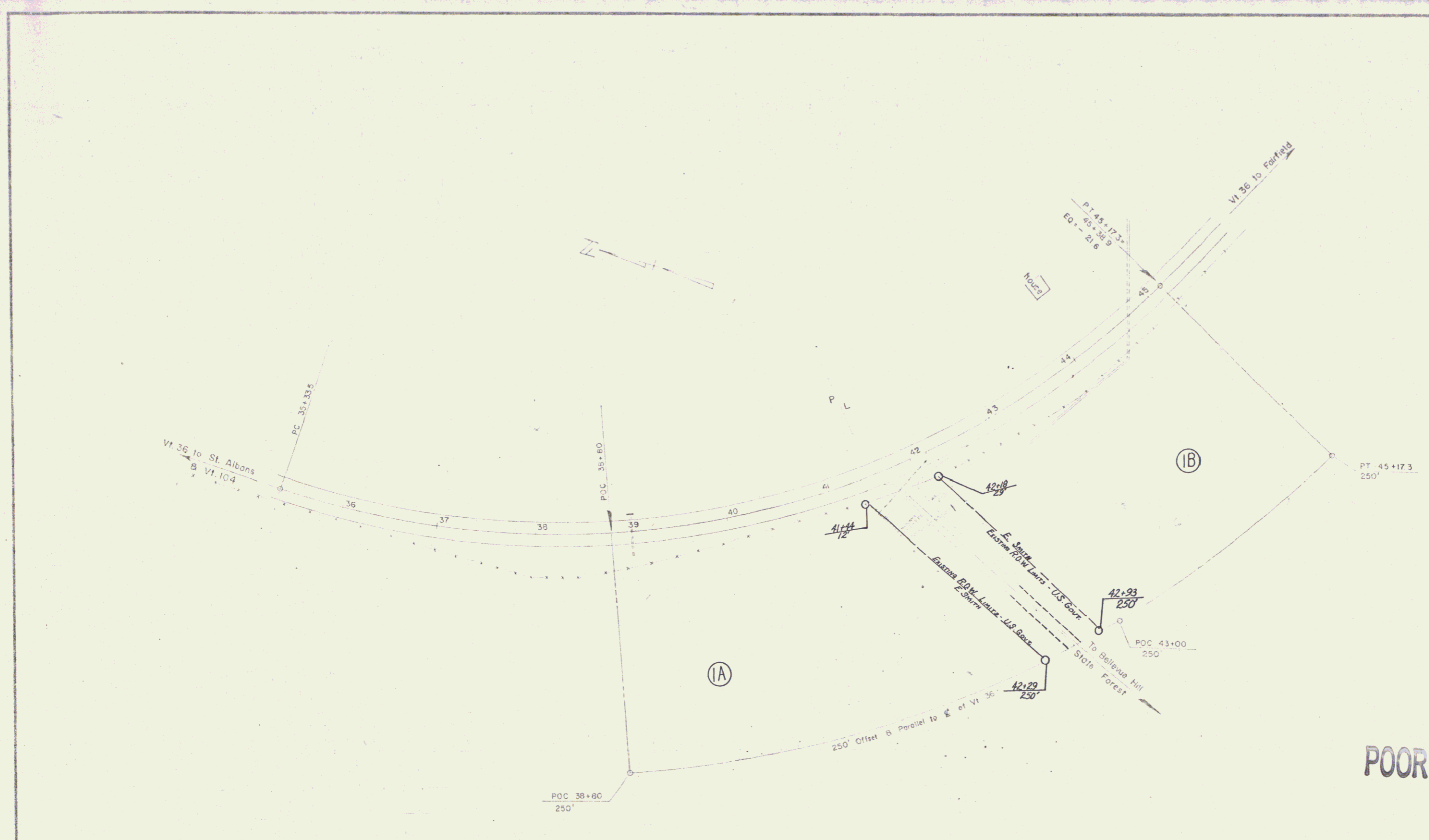
2



ST. ALBANS

SURVEYED BY	DATE
DRAWN BY	DATE 5/2/68
TRACED BY	DATE
SCALE: 1" = 50'	
PROJ. LSS	NO. 0298(1)
SHEET 2	OF 3

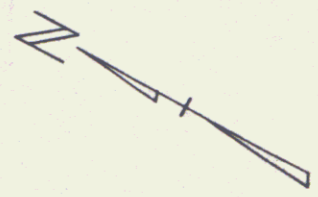
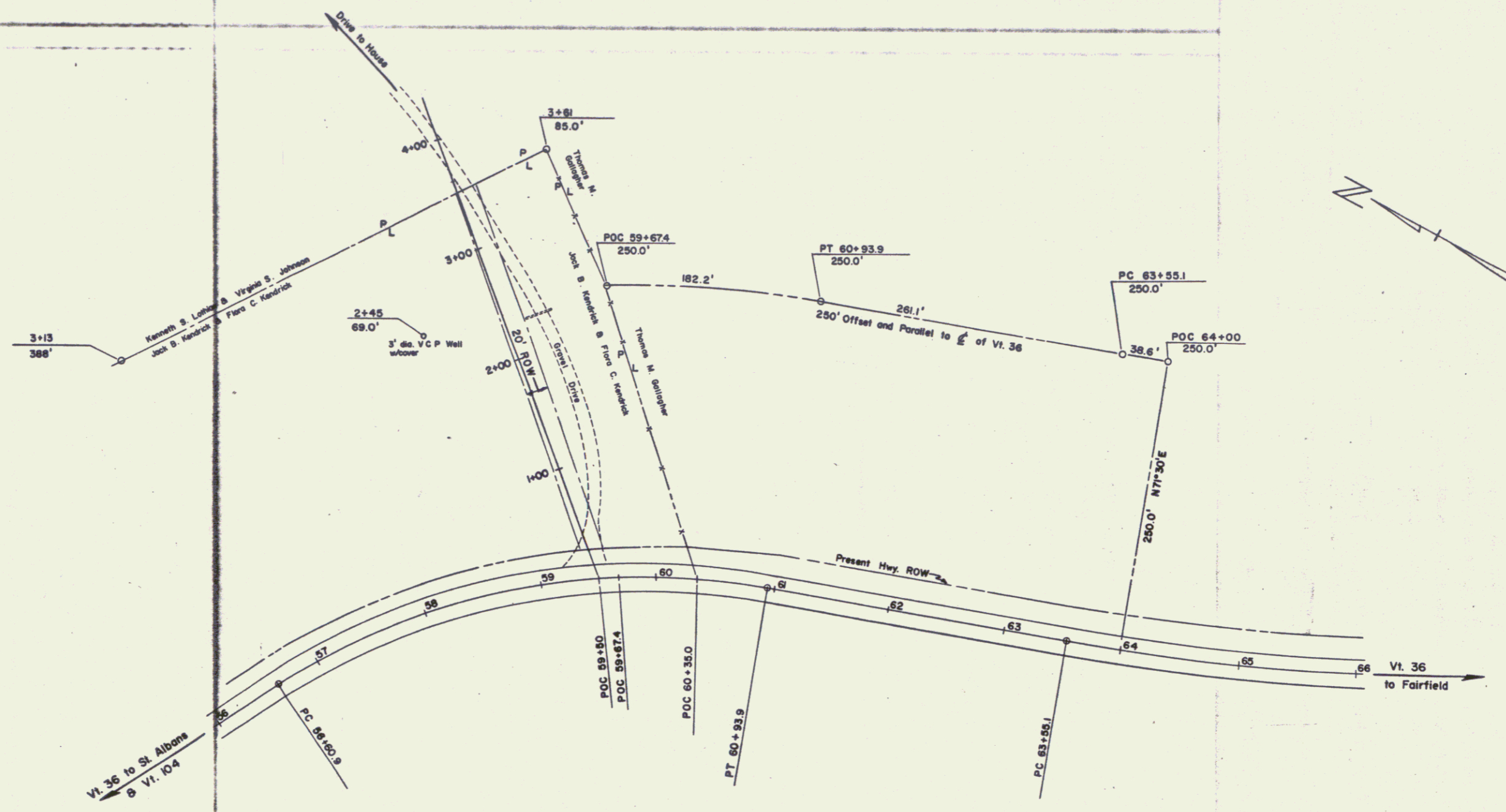
3



POOR ORIGINAL COPY

ST. ALBANS	
SURVEYED BY	DATE
DRAWN BY	DATE 2/27/88
TRACED BY	DATE
SCALE: 1" = 50'	
PROJ. L.S.S. NO 0298(1)	
SHEET 2A	OF 3

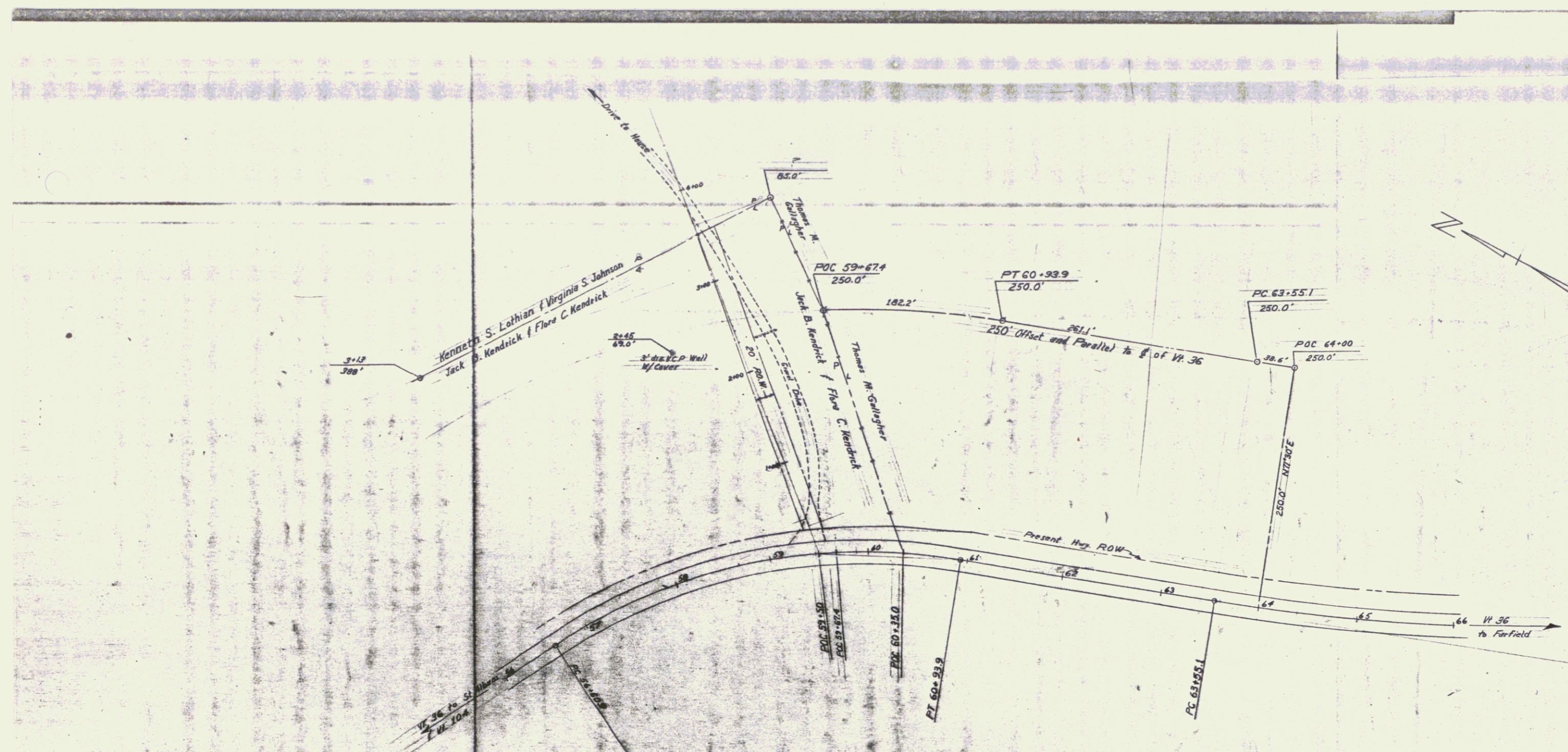
4



ST. ALBANS

SURVEYED BY _____	DATE _____
DRAWN BY _____	DATE 5/25/66
TRACED BY _____	DATE 9/28/66
SCALE : 1" = 50'	
PROJ. LSS NO. 0298(1)	
SHEET 3 OF 3	

6



Project: LSS 0298 (1) Vt 36
 Scenic Overlook: Sta. 59+67.4 to 64+00
 Drawn by: Fred McCoy Date: 4/24/66
 Scale: 1" = 50'

POOR ORIGINAL COPY

SHEET 38

7