

INDEX OF SHEETS

SHEET NO. 1	TITLE PAGE	
" 2	TYPICAL CROSS-SECTION OF IMPROVEMENT	DOUBLE TACK COAT OF REFINED TAR
" 3	BANKING AND WIDENING TABLES	WITH PEASTONE SEAL, ITEM 312 A
" 4	QUANTITY SHEET (ITEMS)	
" 5	QUANTITY SHEET (DRAINAGE)	
6-10	EARTHWORK SHEETS	
11-17	PLAN AND PROFILE SHEETS	
18	STANDARD STRUCTURE SHEET	S-40 BARRICADES, SIGNS & LIGHTS
19	"	S-41 ROUNDING OF SLOPES
20	"	S-45-45 GUARD RAIL
21	"	S-46-45 BOUNDARY MARKERS
22	"	S-47-45 PIPE CULVERTS
23-37	CROSS SECTIONS	

STANDARD STRUCTURE SHEETS APPROVED BY THE CHIEF ENGINEER, VERMONT STATE DEPARTMENT OF HIGHWAYS.—

S-40 FEB. 28, 1947
 S-45-45 OCT. 8, 1945
 S-46-45 FEB. 28, 1949
 S-47-45 FEB. 28, 1949

STATE OF VERMONT
 STATE HIGHWAY DEPARTMENT

PLAN AND PROFILE OF PROPOSED
 STATE HIGHWAY

SECONDARY PROJECT

TOWN OF ST. ALBANS

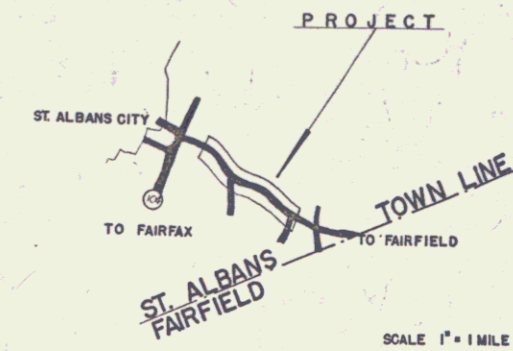
COUNTY OF FRANKLIN
 STATE AID ROAD
 ST. ALBANS CITY—FAIRFIELD ROAD

BEGINNING AT A POINT 1,425.0 FEET EASTERLY OF THE INTERSECTION OF VERMONT ROUTE 104 AND EXTENDING 7,118.1 FEET EASTERLY

LENGTH OF PROJECT 7,118.1 FEET = 1.348 MILES

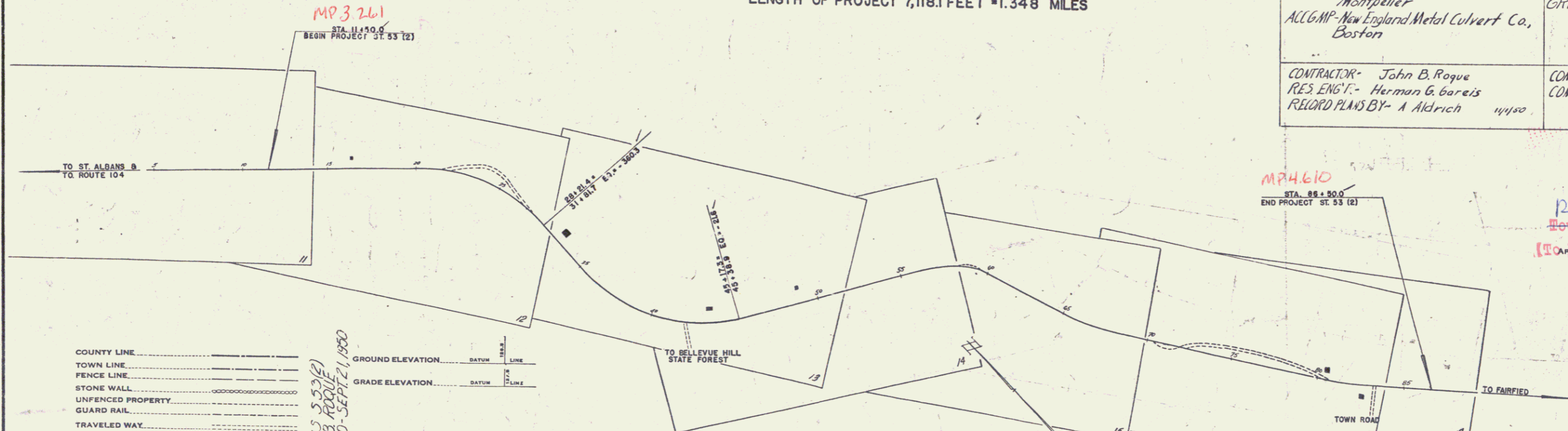
FED. ROAD DIST. NO.	STATE	S. PROJ. NO.	FISCAL YEAR	SHEET NO.	TOTAL SHEETS
9	VT.	53 (2)		1	37

POST WAR SECONDARY



Pin# 99R955
 Route VT36

PROJECT NAME AND NUMBER	TYPE	PAVEMENT AREA
ST. ALBANS S 53 (2)	Contract for 1/2 mi. (1/2 mi.)	15,818 sq.
RECORD PLANS		
MATERIALS		
TAR—Barrett Co, Worcester, Mass. plant	CABLE GUARD RAIL—Bethlehem Steel Co,	
R.C.P.—Vermont Concrete Pipe Corp,	Sparrows Point, Md	
Montpelier	GRAVEL—Lambert Pk, E Fairfield	
ALC.G.M.P.—New England Metal Culvert Co,	Boston	
CONTRACTOR—John B. Rogue	CONTRACT DATED—Oct 24, 1949	
RES. ENGT.—Herman G. Gareis	CONSTRUCTION STARTED—Oct 24, 1949	
RECORD PLANS BY—A Aldrich 11/1/50	COMPLETED—Sept 21, 1950	
	ACCEPTED—Sept 21, 1950	



LEGEND

COUNTY LINE	GROUND ELEVATION DATUM	LINE
TOWN LINE	GRADE ELEVATION DATUM	LINE
FENCE LINE		
STONE WALL		
UNFENCED PROPERTY		
GUARD RAIL		
TRAVELED WAY		
RAILROAD		
RETAINING WALL		
CENTER LINE		
SURVEY LINE		
CULVERT		
DROP INLET		
TROLLEY POLE		
POWER POLE		
TELEPHONE POLE		
TREES		
HEDGE		

CURVE DATA

DEFLECTION ANGLE	Δ
DEGREE OF CURVE	D
RADIUS OF CURVE	R
TANGENT DISTANCE	T
LENGTH OF CURVE	L
EXTERNAL DISTANCE	E
POINT OF INTERSECTION	P. I.
POINT OF CURVE	P. C.
POINT OF TANGENT	P. T.
POINT ON TANGENT	P. O. T.

SCALES

TITLE	1" = 300'
TYPICAL	1" = 2'
PLAN	1" = 50'
PROFILE HORIZONTAL	1" = 50'
PROFILE VERTICAL	1" = 10'
CROSS SECTIONS	1" = 5'

THESE PLANS ARE SUBJECT TO SUCH REVISIONS AS MAY BE REQUIRED BY THE BUREAU OF PUBLIC ROADS OR THE COMMISSIONER OF HIGHWAYS.

CONSTRUCTION IS TO BE CARRIED ON IN ACCORDANCE WITH THE PLANS AND THE STANDARD ROAD AND BRIDGE SPECIFICATIONS OF 1948, AS APPROVED JULY 25, 1949 BY THE BUREAU OF PUBLIC ROADS, INCLUDING ALL SUBSEQUENT APPROVED REVISIONS AND SUCH REVISED SPECIFICATIONS AND SPECIAL PROVISIONS AS ARE SUBMITTED WITH THE PLANS.

RIGHT-OF-WAY DIVISION
 TOWN FILE
 PERPETUAL
 Town of St. Albans
 (To Be Returned to W. Division)
 H. E. Sargent
 CHIEF ENGINEER
 SUBMITTED BY ORDER OF THE STATE HIGHWAY BOARD

APPROVED [Signature] HIGHWAY ENGINEER	APPROVED [Signature] DISTRICT HIGHWAY COMMISSIONER	SERIES ST. NO. 53 (2) FILED SHEET 1 OF 37
---	--	--

INDEX OF SHEETS

SHEET NO. 1	TITLE PAGE	DOUBLE TACK COAT OF REFINED TAR
2	TYPICAL CROSS-SECTION OF IMPROVEMENT	WITH PEASTONE SEAL, ITEM 312 A
3	BANKING AND WIDENING TABLES	
4	QUANTITY SHEET (ITEMS)	
5	QUANTITY SHEET (DRAINAGE)	
6-10	EARTHWORK SHEETS	
11-17	PLAN AND PROFILE SHEETS	
18	STANDARD STRUCTURE SHEET	S-40 BARRICADES, SIGNS & LIGHTS
19		S-41 ROUNDING OF SLOPES
20		S-45-45 GUARD RAIL
21		S-46-45 BOUNDARY MARKERS
22		S-47-45 PIPE CULVERTS
23-37	GROSS SECTIONS	

STANDARD STRUCTURE SHEETS APPROVED BY THE CHIEF ENGINEER, VERMONT STATE DEPARTMENT OF HIGHWAYS.—

S-40 FEB. 28, 1949
 S-45-45 OCT. 8, 1945
 S-46-45 FEB. 28, 1949
 S-47-45 FEB. 28, 1949

STATE OF VERMONT
 STATE HIGHWAY DEPARTMENT

PLAN AND PROFILE OF PROPOSED
 STATE HIGHWAY

SECONDARY PROJECT
 TOWN OF ST. ALBANS

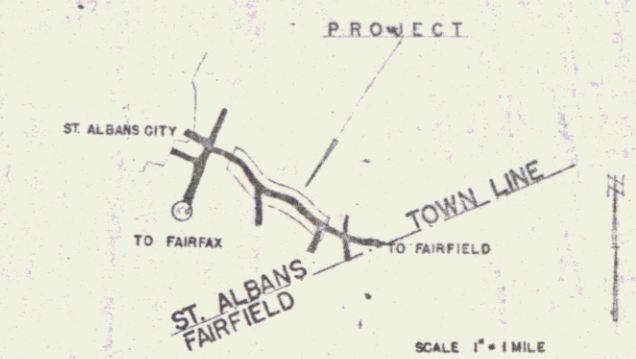
COUNTY OF FRANKLIN
 STATE AID ROAD
 ST. ALBANS CITY - FAIRFIELD ROAD

BEGINNING AT A POINT 1,425.0 FEET EASTERLY OF THE INTERSECTION
 OF VERMONT ROUTE 104 AND EXTENDING 7,118.1 FEET EASTERLY

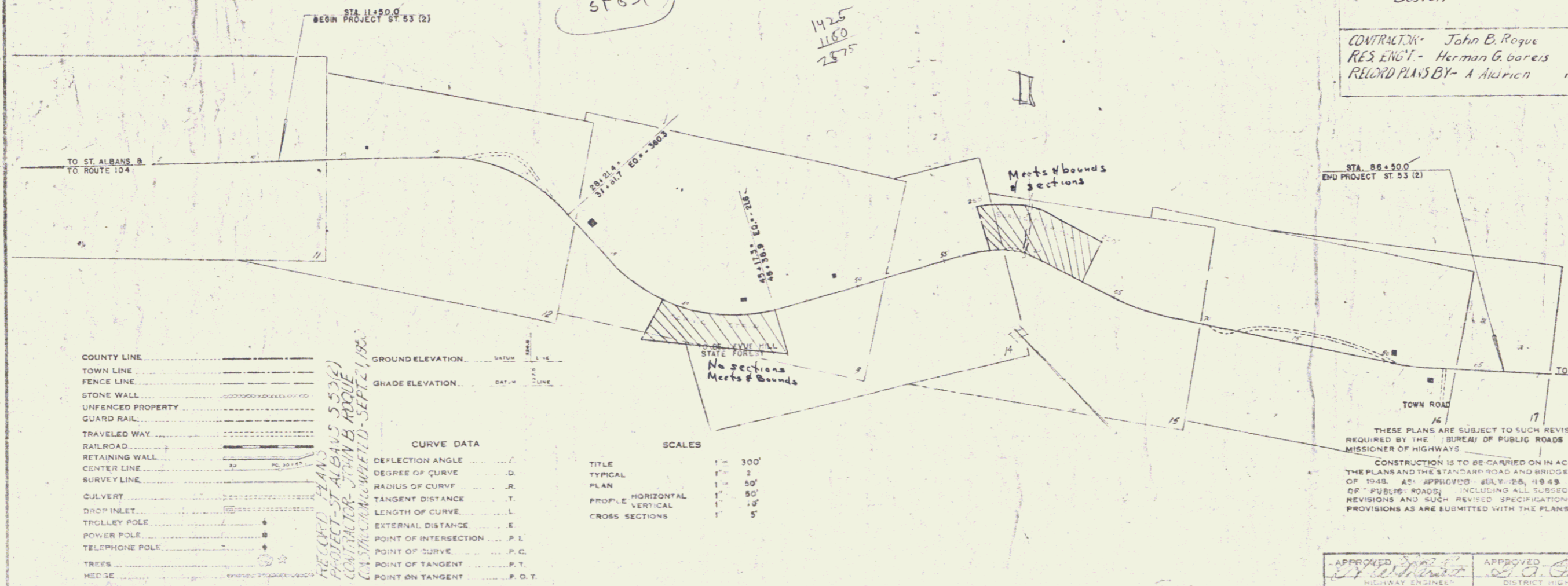
LENGTH OF PROJECT 7,118.1 FEET = 1.348 MILES

PLAN SHEET	NO.	DATE	BY
9	V-53 (2)		

POST WAR SECONDARY



PROJECT NAME AND NUMBER ST. ALBANS 553 (2)	TYPE RECORD PLANS	PAVEMENT AREA 15,818 sq. yds.
MATERIALS		
TAR - Bonnett Co. Worcester, Mass. plant	CABLE GUARD RAIL - Bethlehem Steel Co.	
RCP - Vermont Concrete Pipe Corp. Montpelier	Sparrows Point, Md.	
AUG. PIPE - New England Metal Culvert Co. Boston	GRAVEL - Lambert Pt. E. Fairfield	
CONTRACTOR - John B. Roque	CONTRACT DATED - Oct 24, 1949	
RES. ENG'T - Herman G. Cooreis	CONSTRUCTION STARTED - Oct 24, 1949	
RECORD PLANS BY - A. Aldrich 11/1/50	COMPLETED - Sept 21, 1950	
	ACCEPTED - Sept 21, 1950	



APPROVED: *H. E. Sargent*
 CHIEF ENGINEER

SUBMITTED BY ORDER OF THE STATE HIGHWAY BOARD

THESE PLANS ARE SUBJECT TO SUCH REVISIONS AS MAY BE REQUIRED BY THE BUREAU OF PUBLIC ROADS OR THE COMMISSIONER OF HIGHWAYS.

CONSTRUCTION IS TO BE CARRIED ON IN ACCORDANCE WITH THE PLANS AND THE STANDARD ROAD AND BRIDGE SPECIFICATIONS OF 1948 AS APPROVED JULY 28, 1949 BY THE BUREAU OF PUBLIC ROADS INCLUDING ALL SUBSEQUENT APPROVED REVISIONS AND SUCH REVISED SPECIFICATIONS AND SPECIAL PROVISIONS AS ARE SUBMITTED WITH THE PLANS.

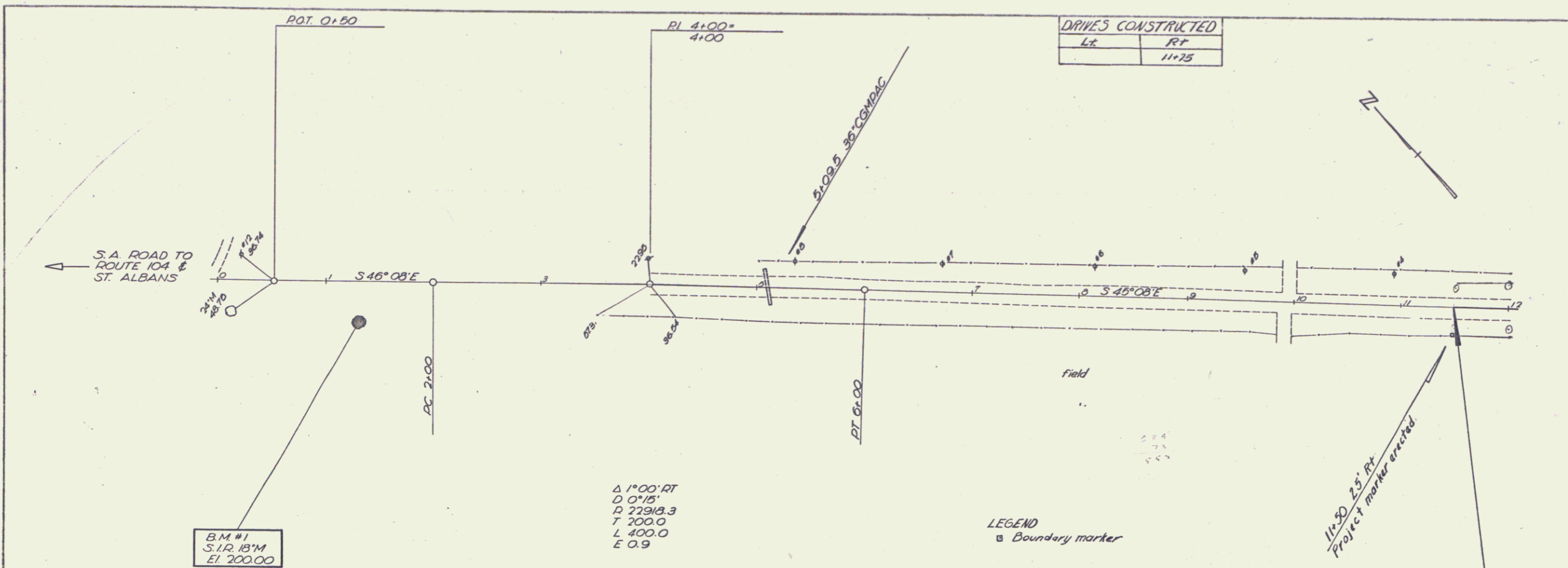
APPROVED: *[Signature]* DISTRICT HIGHWAY COMMISSIONER
 SERIES 21 OF 21 (2) SHEET 1A OF 17

PLAN	DATE
DESIGNED	
DRAWN	
CHECKED	
BY	

PROFILE	DATE
DESIGNED	
DRAWN	
CHECKED	
BY	

DRIVES CONSTRUCTED	
Lt	Rt
	11+75

FISCAL YEAR	5	SHEET NO.	11	TOTAL SHEETS	37
DIST. NO.	530	YEAR	11		
POST WAR SECONDARY					

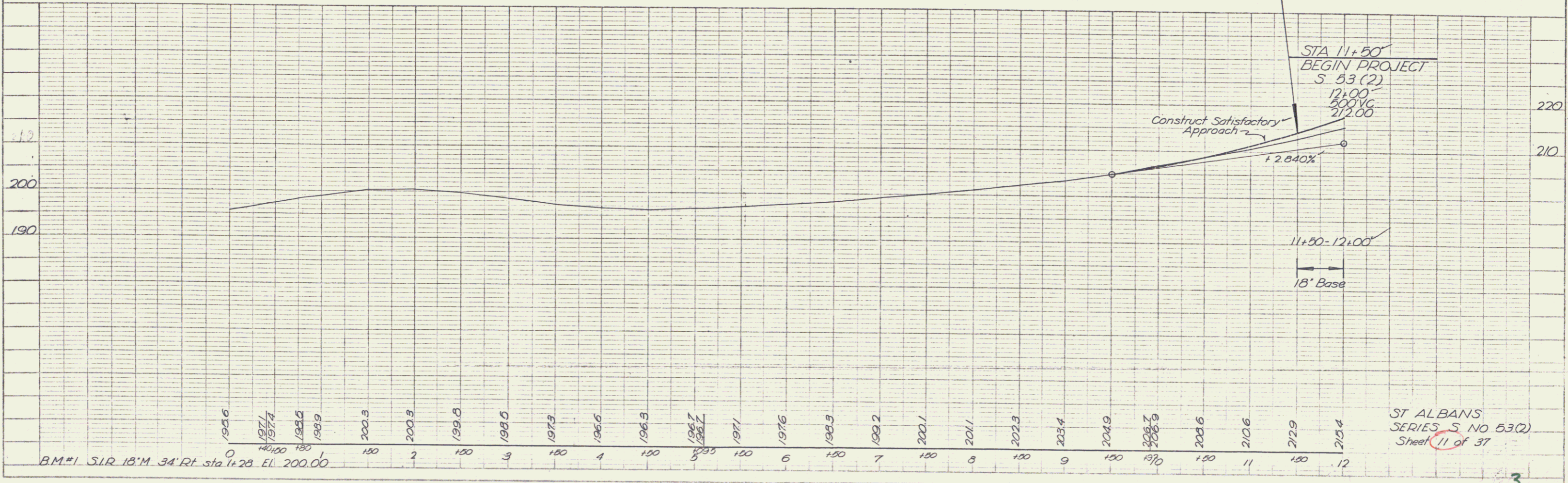


BM #1
S.I.R. 18'M
El. 200.00

Δ 1°00' RT
D 0°15'
P 27918.3
T 200.0
L 400.0
E 0.9

LEGEND
□ Boundary marker

11+50 25' Rt
Project marker erected

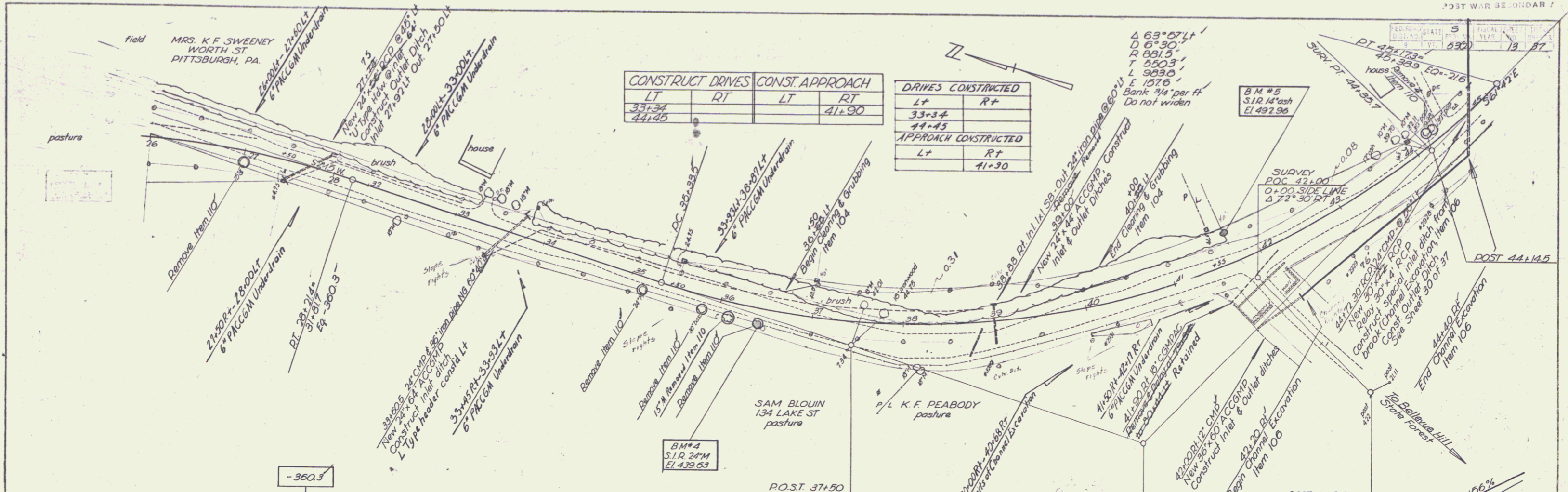


BM #1 S.I.R. 18'M 34' Rt. sta. 1+28 El. 200.00

ST ALBANS
SERIES S NO 53(2)
Sheet 11 of 37

PLAN
 DRAWN BY: [Name]
 CHECKED BY: [Name]
 DATE: 9-48

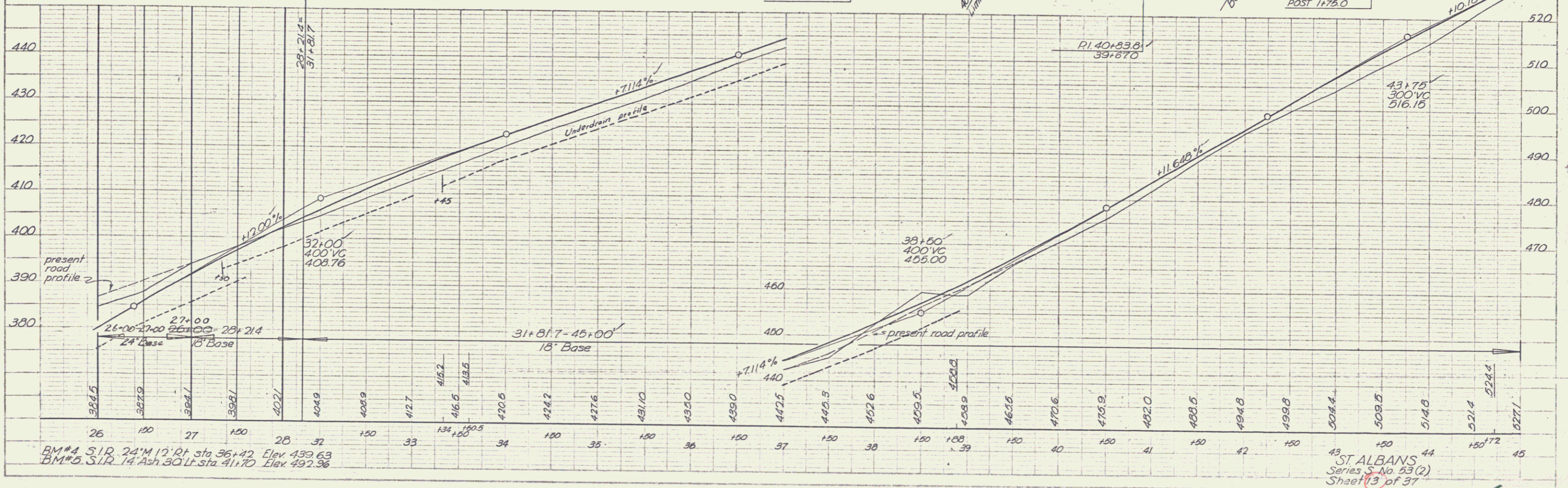
PROFILE
 DRAWN BY: [Name]
 CHECKED BY: [Name]
 DATE: 9-48



CONSTRUCT DRIVES		CONST. APPROACH	
LT	RT	LT	RT
33+34			41+90
44+45			

DRIVES CONSTRUCTED	
L+	R+
33+34	
44+45	

APPROACH CONSTRUCTED	
L+	R+
	41+30

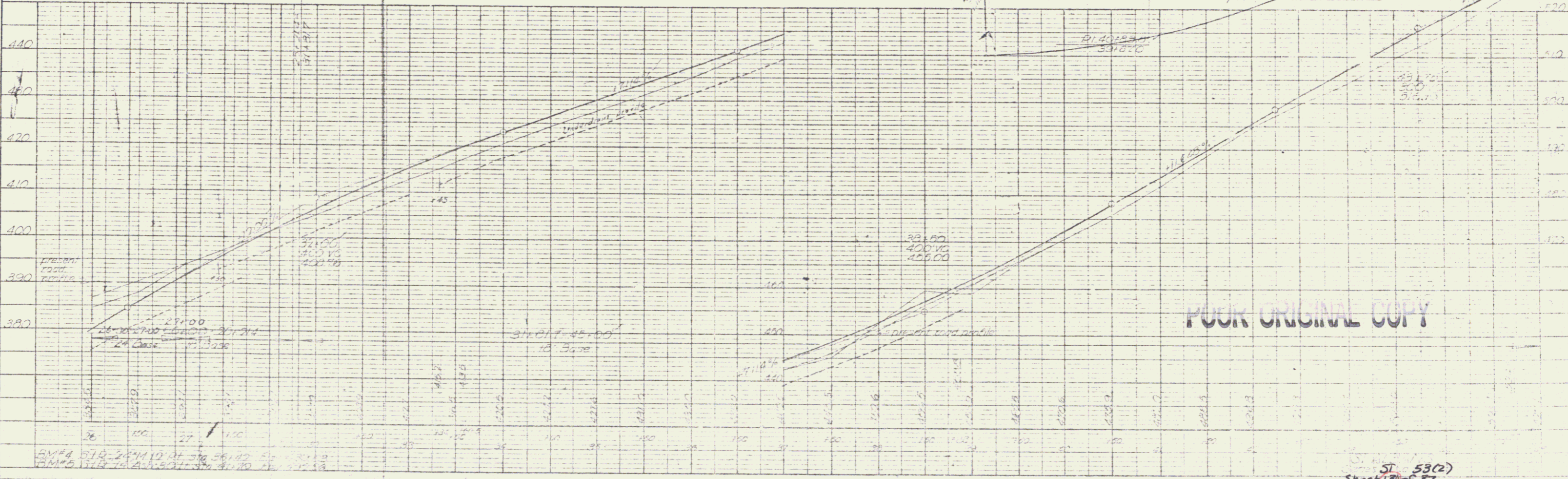
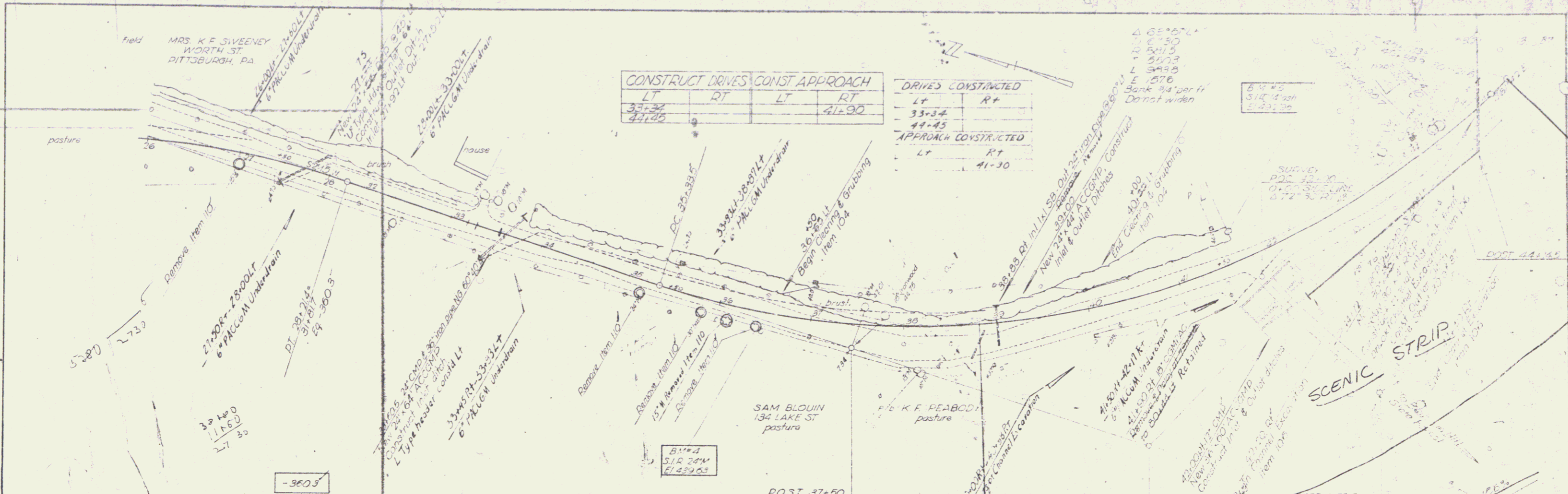


BM#4 S.I.R. 24'M 12' RT sta 36+42 Elev. 439.63
 BM#5 S.I.R. 14' Ash 30' Lt. sta 41+70 Elev. 492.96

ST ALBANS
 Series S No 53(2)
 Sheet 13 of 37

PLAN
 DATE: 10/2/54
 DRAWN BY: J. J. [unclear]
 CHECKED BY: [unclear]
 NO. 1

PROFILE
 DATE: 10/2/54
 DRAWN BY: J. J. [unclear]
 CHECKED BY: [unclear]
 NO. 1



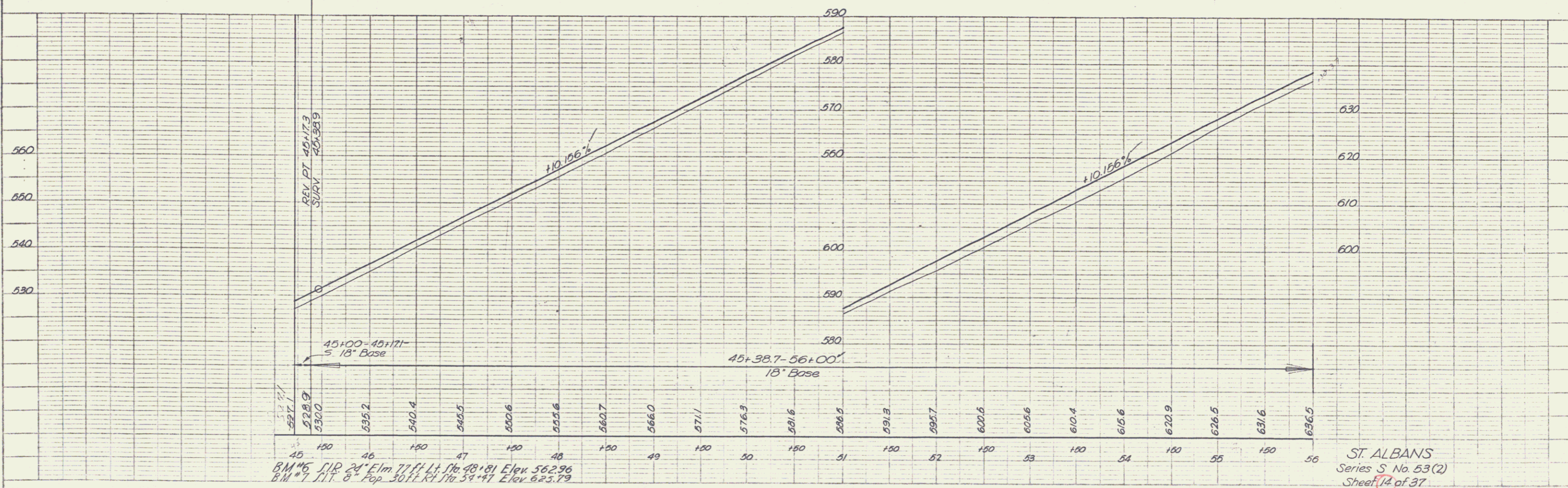
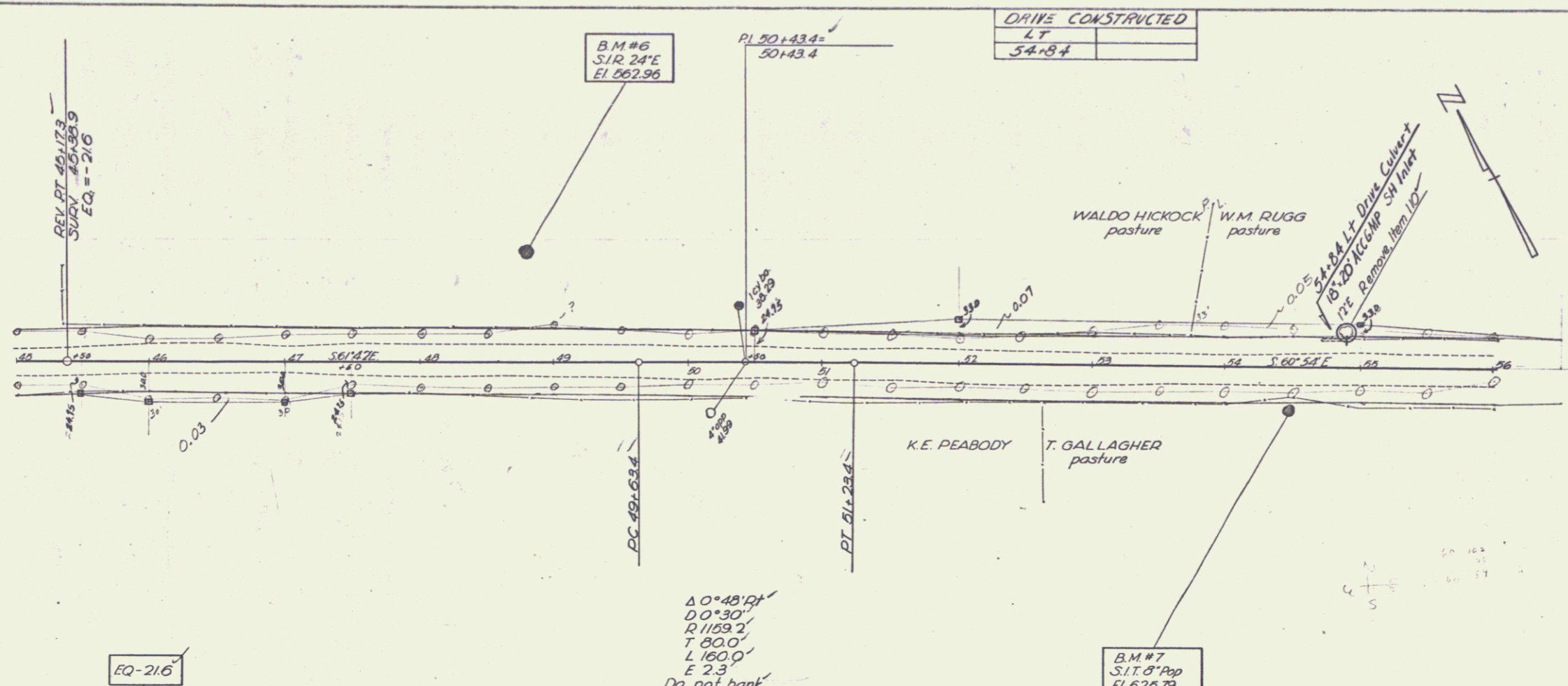
POOR ORIGINAL COPY

ST 53(2)
 Sheet 13 of 57

FED. ROAD DIST. NO.	STATE	PROJ. NO.	FISCAL YEAR	SHEET NO.	TOTAL SHEETS
9	VT	530	14	37	

PLAN
 DATE: 3-28
 DRAWN BY: Spangberg
 CHECKED BY: [Signature]
 NOTE BOOK: [Blank]
 NO. OF SHEETS: [Blank]

PROFILE
 DATE: 3-28
 DRAWN BY: Spangberg
 CHECKED BY: [Signature]
 NOTE BOOK: [Blank]
 NO. OF SHEETS: [Blank]

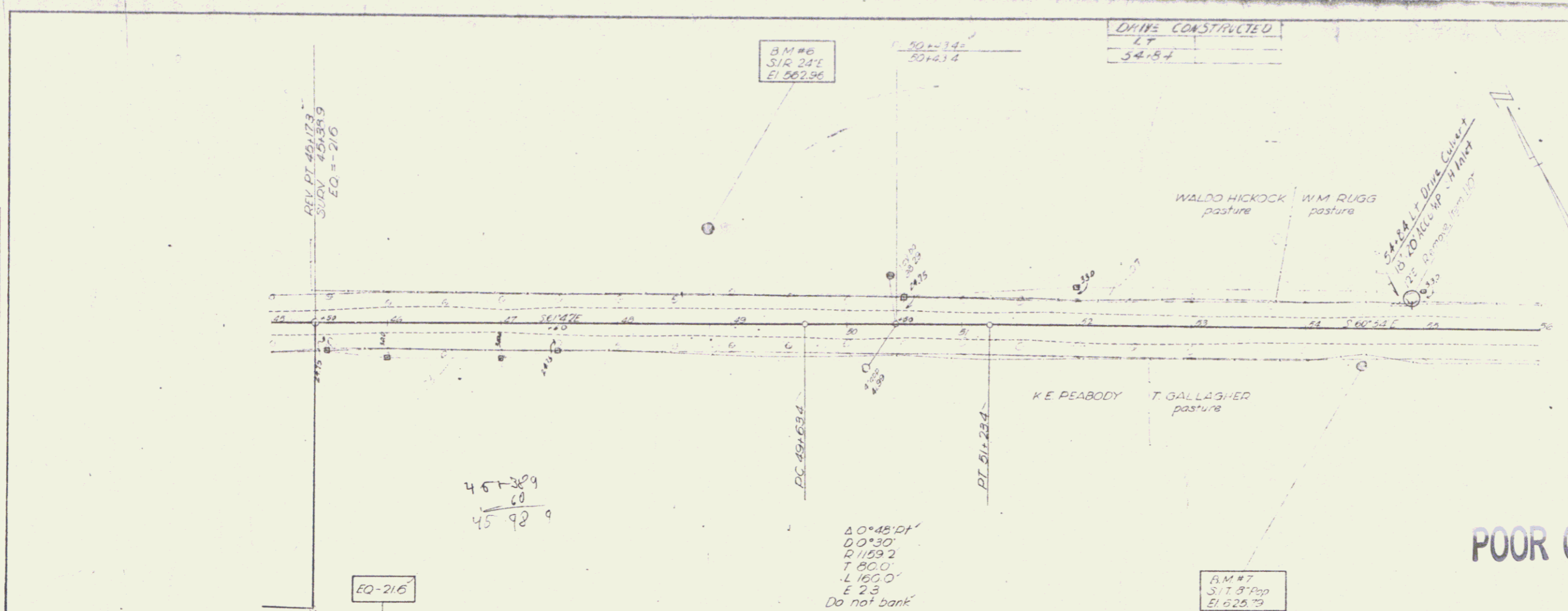


B.M. #6 S.12 241° E 1m 77 ft Lt. 16 48.81 Elev. 562.96
 B.M. #7 S.11 8° Pop 30 ft Lt. 14 54.47 Elev. 625.79

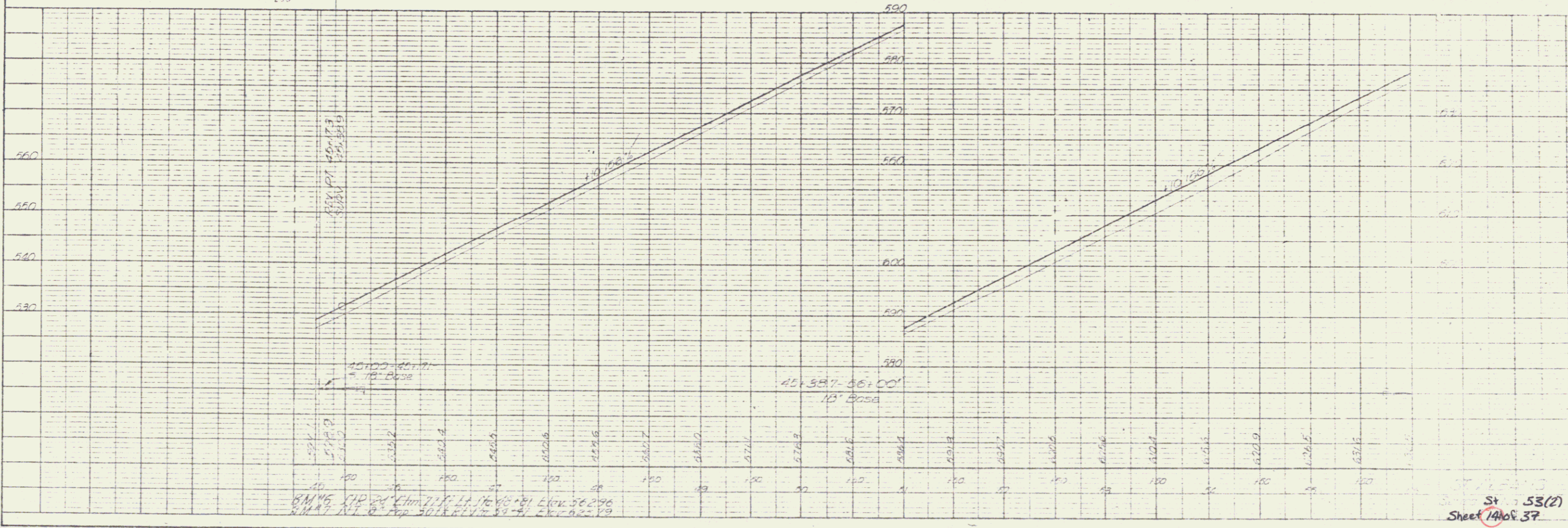
ST. ALBANS
 Series S No. 53(2)
 Sheet 14 of 37

PLAN	DATE	BY
NO.	2-23	W.H.
NO.		

PROFILE	DATE	BY
NO.	2-23	W.H.
NO.		



POOR ORIGINAL COPY

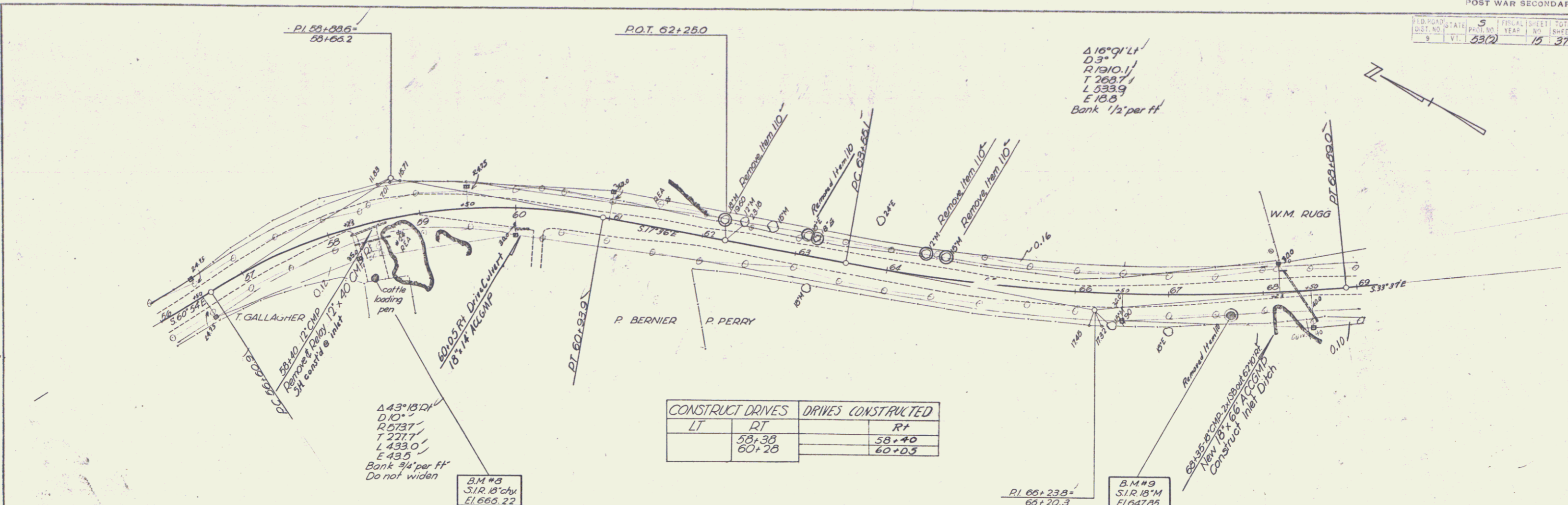


St. 53(2)
 Sheet 14 of 37

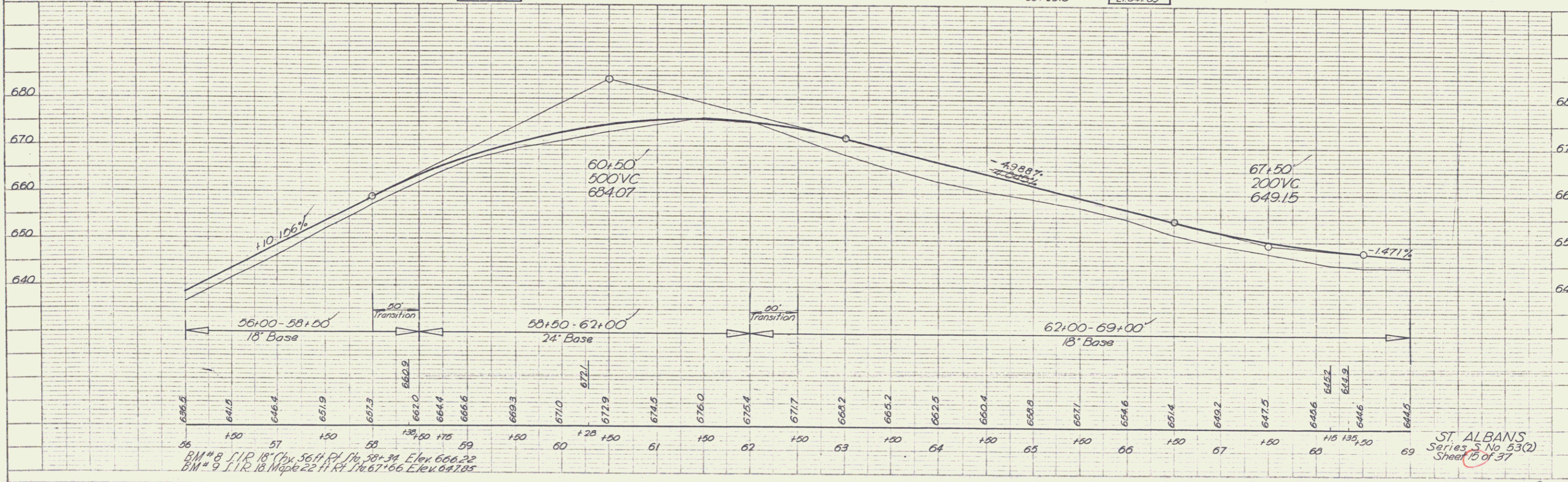
FED. ROAD DIST. NO.	STATE	PROJECT NO.	FISCAL YEAR	SHEET NO.	TOTAL SHEETS
9	VI.	53(2)	19	37	

PLAN
 DRAWN BY: [Signature]
 CHECKED BY: [Signature]
 DATE: 9-48
 SHEET NO. 2-48

PROFILE
 DRAWN BY: [Signature]
 CHECKED BY: [Signature]
 DATE: 9-48
 SHEET NO. 2-48

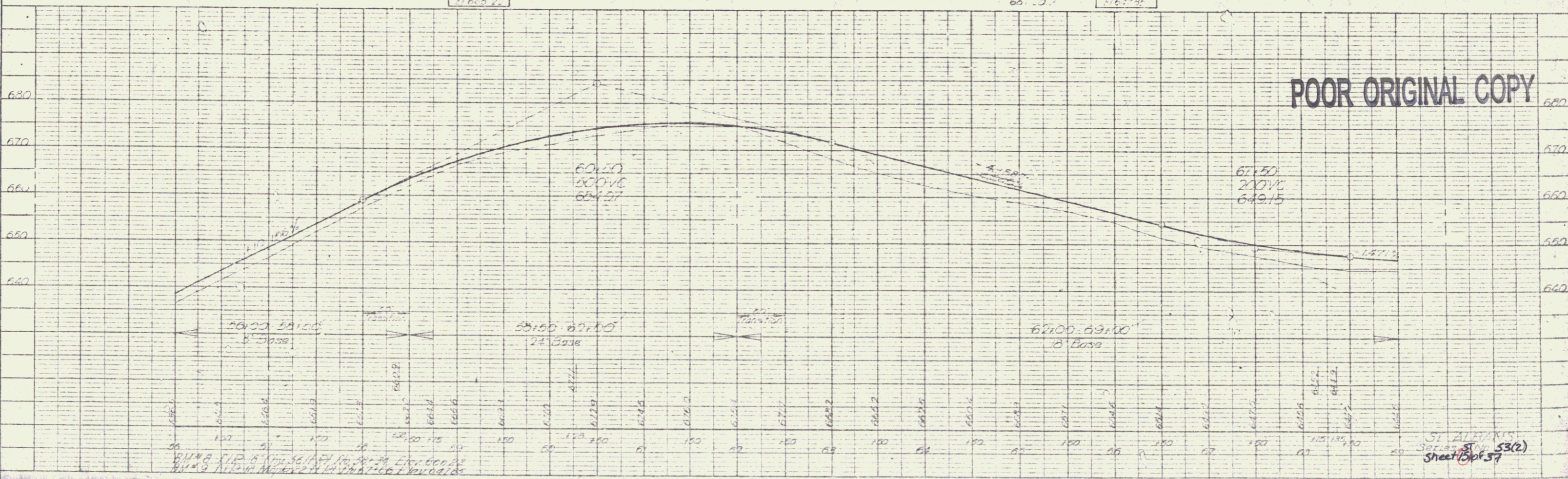
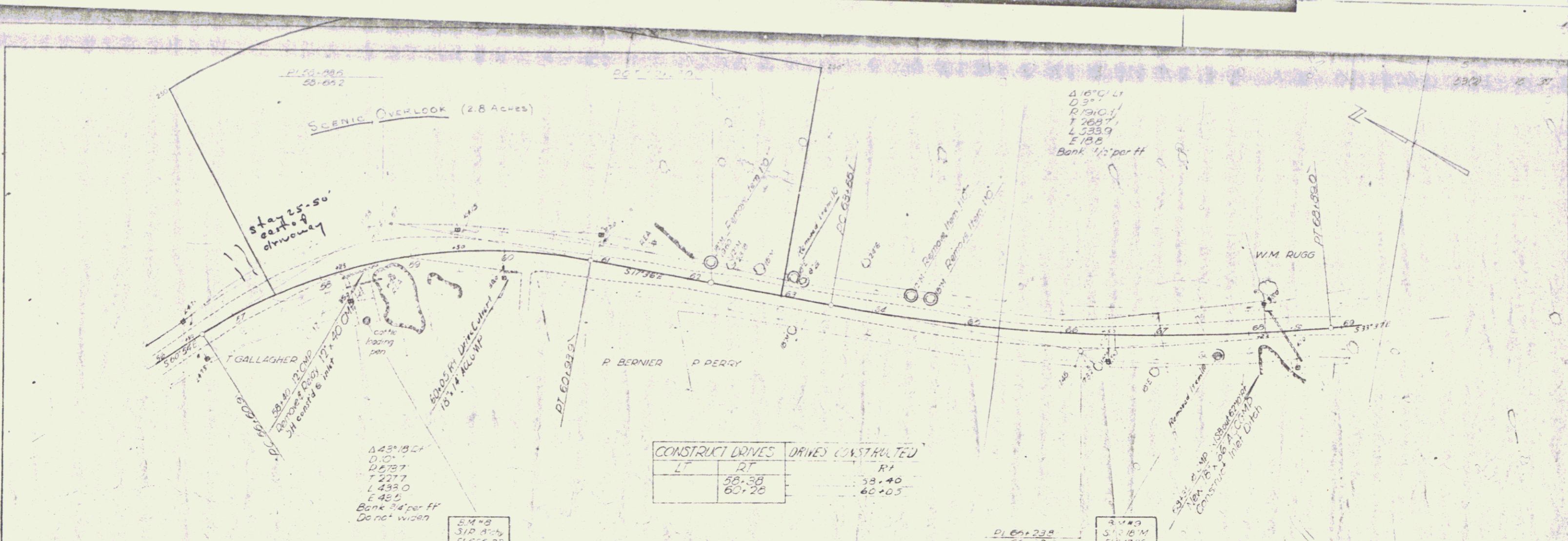


CONSTRUCT DRIVES		DRIVES CONSTRUCTED	
LT	RT	LT	RT
	58+38		58+40
	60+28		60+05



PLAN
 DATE: 12-22-53
 DRAWN BY: [Signature]
 CHECKED BY: [Signature]
 NOTE BOOK NO. OF THIS DRAWING: [Blank]

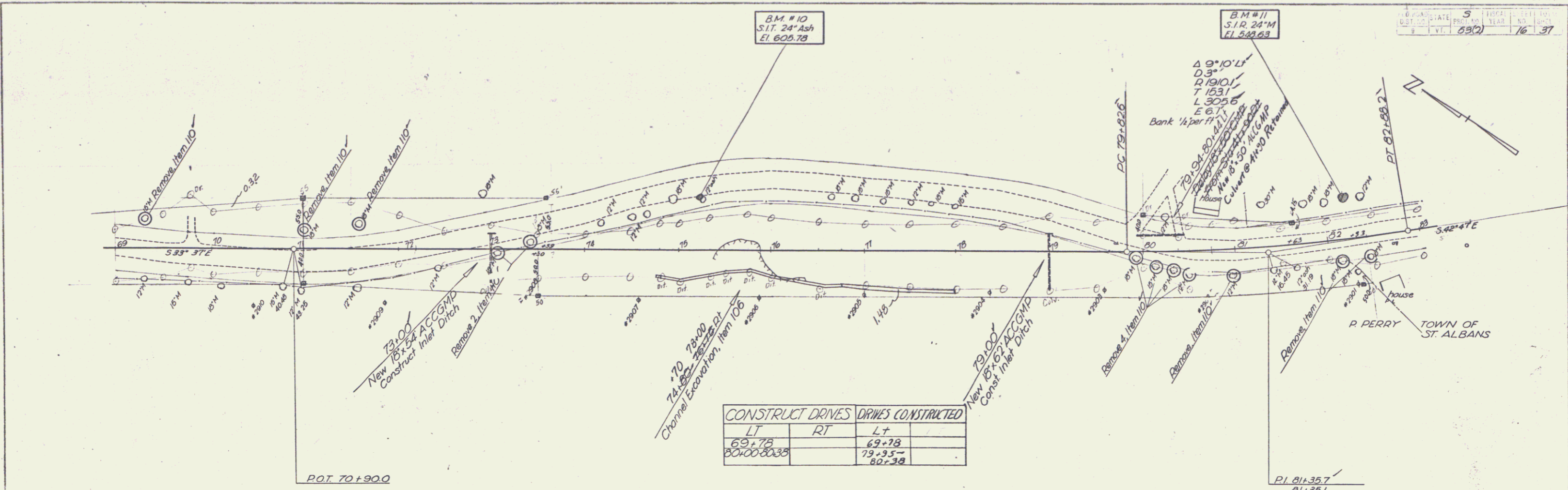
PROFILE
 DATE: 12-22-53
 DRAWN BY: [Signature]
 CHECKED BY: [Signature]
 NOTE BOOK NO. OF THIS DRAWING: [Blank]



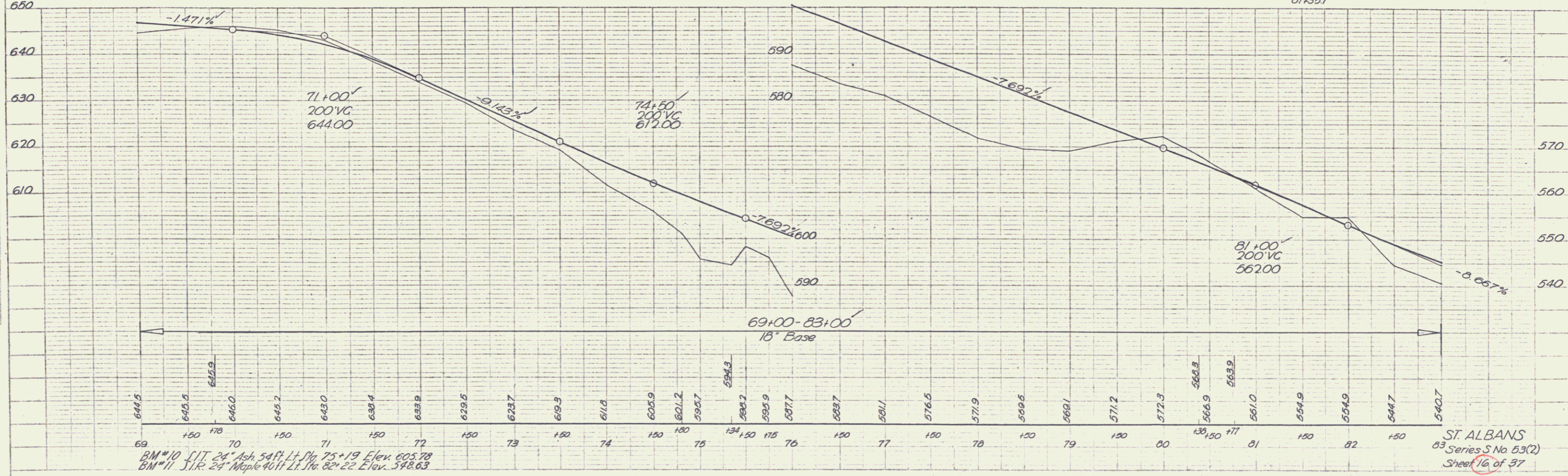
Sheet 53(2)
 Sheet 37

PLAN
 SURVEYED BY
 PARTIAL
 DATE 1937
 BY J. J. C. C.

PROFILE
 SURVEYED BY
 DATE 1937
 BY J. J. C. C.



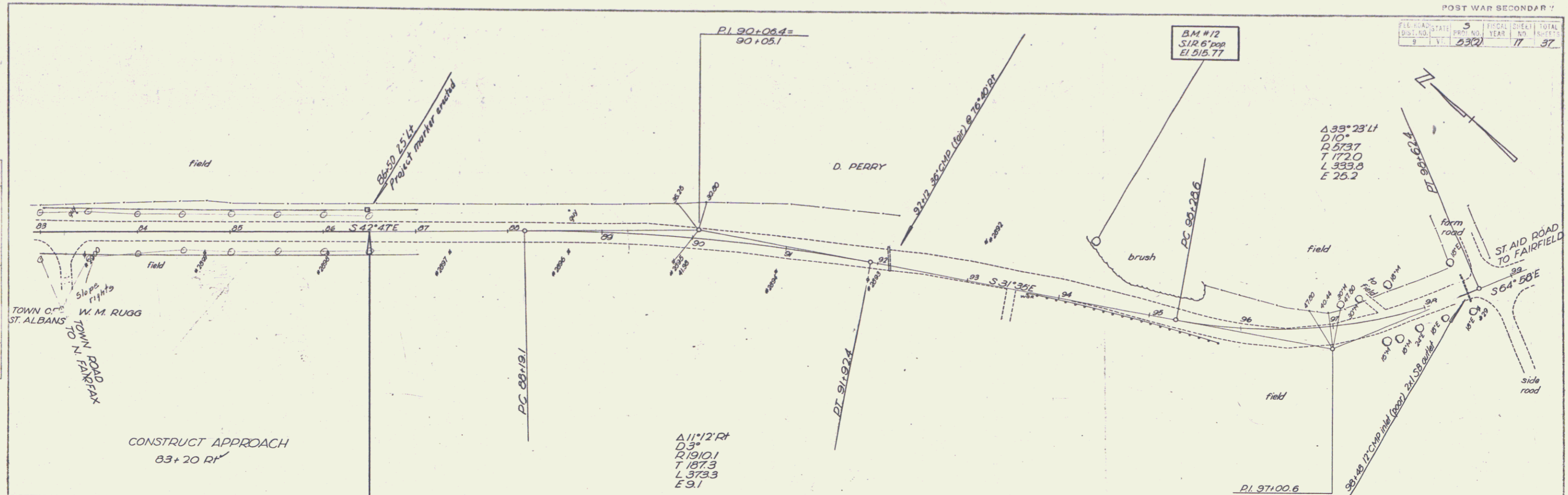
CONSTRUCT DRIVES		DRIVES CONSTRUCTED	
LT	RT	LT	RT
69+78		69+78	
80+00-80+38		79+35-	80+38



BM #10 S.I.T. 24" Ash 54ft. L.H. Peg 75+19 Elev. 605.78
 BM #11 S.I.R. 24" Maple 40ft L.H. Peg 82+22 Elev. 598.63

ST. ALBANS
 83 Series S No 53(2)
 Sheet 16 of 37

PLAN
 9-48
 2-48
 TOWN OF ST. ALBANS
 W. M. RUGG
 TOWN ROAD
 TO N. FAIRFAX



PROFILE
 9-48
 2-48
 TOWN OF ST. ALBANS
 W. M. RUGG
 TOWN ROAD
 TO N. FAIRFAX

