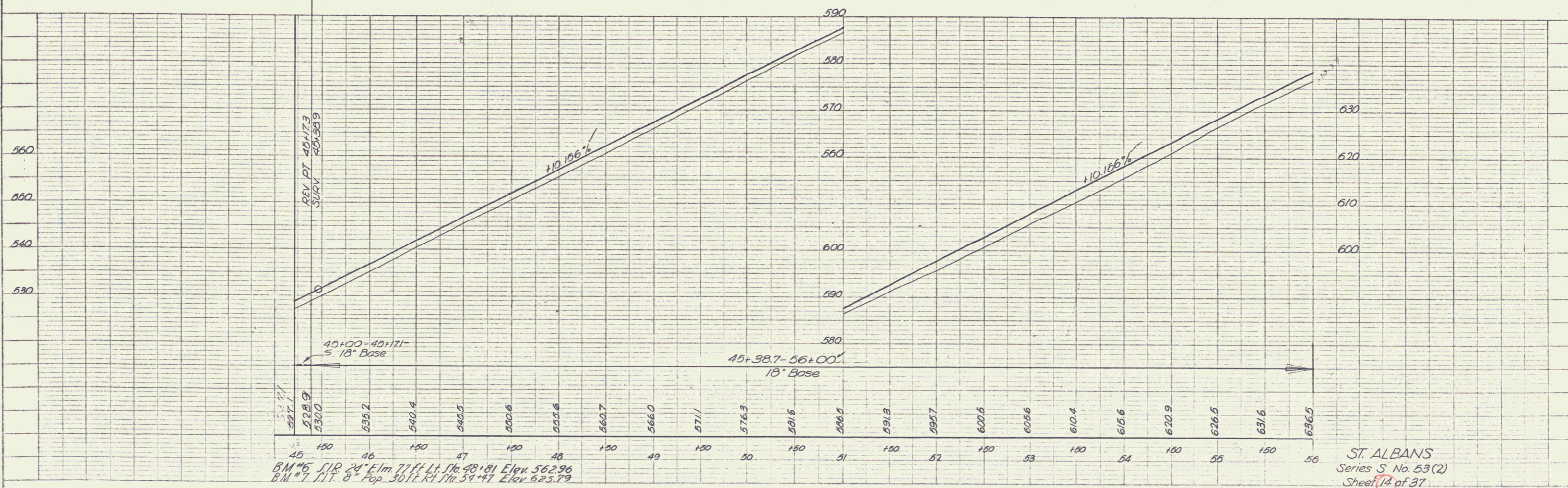
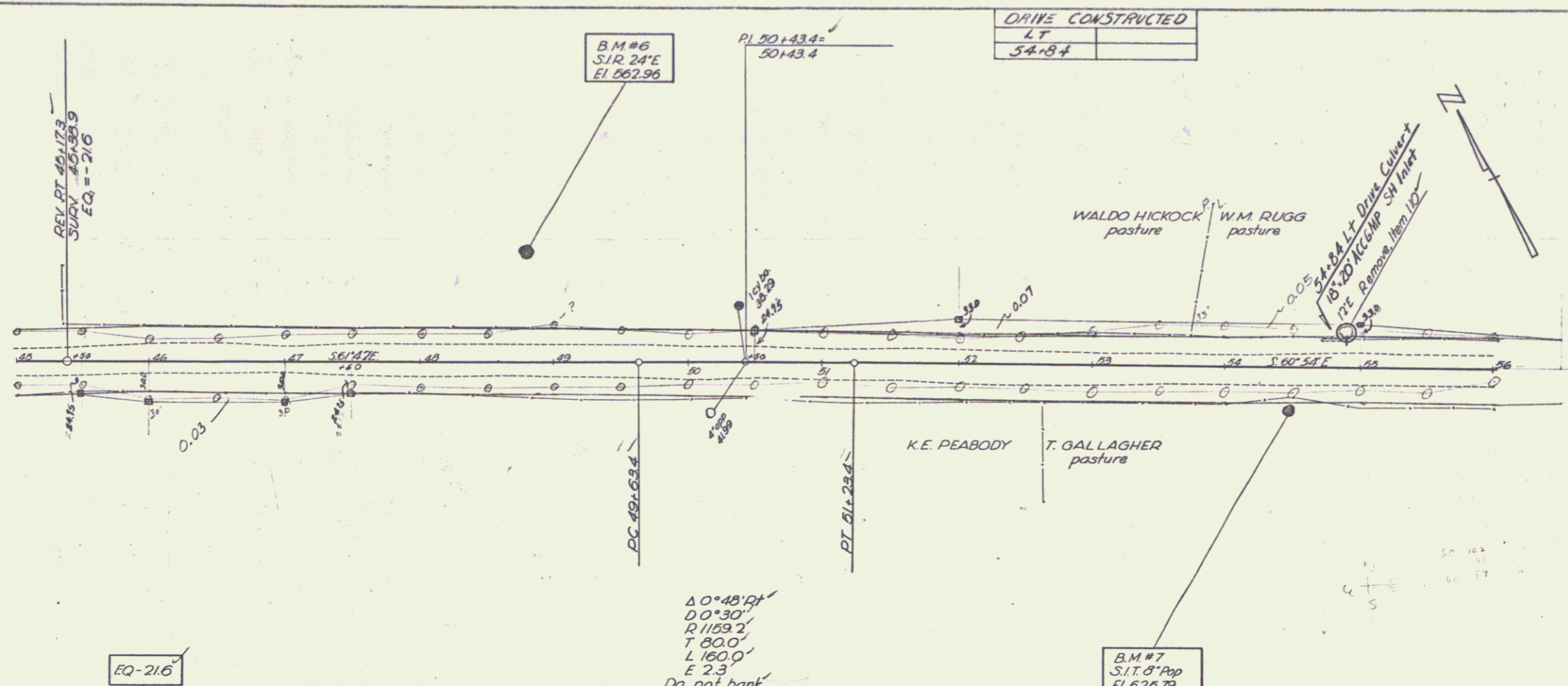


FED. ROAD DIST. NO.	STATE	PROJ. NO.	FISCAL YEAR	SHEET NO.	TOTAL SHEETS
9	VT	530	14	37	

PLAN  
 DATE: 3-28  
 DRAWN BY: Spangberg  
 CHECKED BY: [Signature]  
 NOTE BOOK: [Blank]  
 NO. OF SHEETS: 37

PROFILE  
 DATE: 3-28  
 DRAWN BY: Spangberg  
 CHECKED BY: [Signature]  
 NOTE BOOK: [Blank]  
 NO. OF SHEETS: 37



B.M. #6 S.12 241 E. 1m 77 ft Lt. 16 48.81 Elev. 662.96  
 B.M. #7 S.11 8° Pop 301 ft Lt. 14 54.47 Elev. 625.79

ST. ALBANS  
 Series S No. 53(2)  
 Sheet 14 of 37