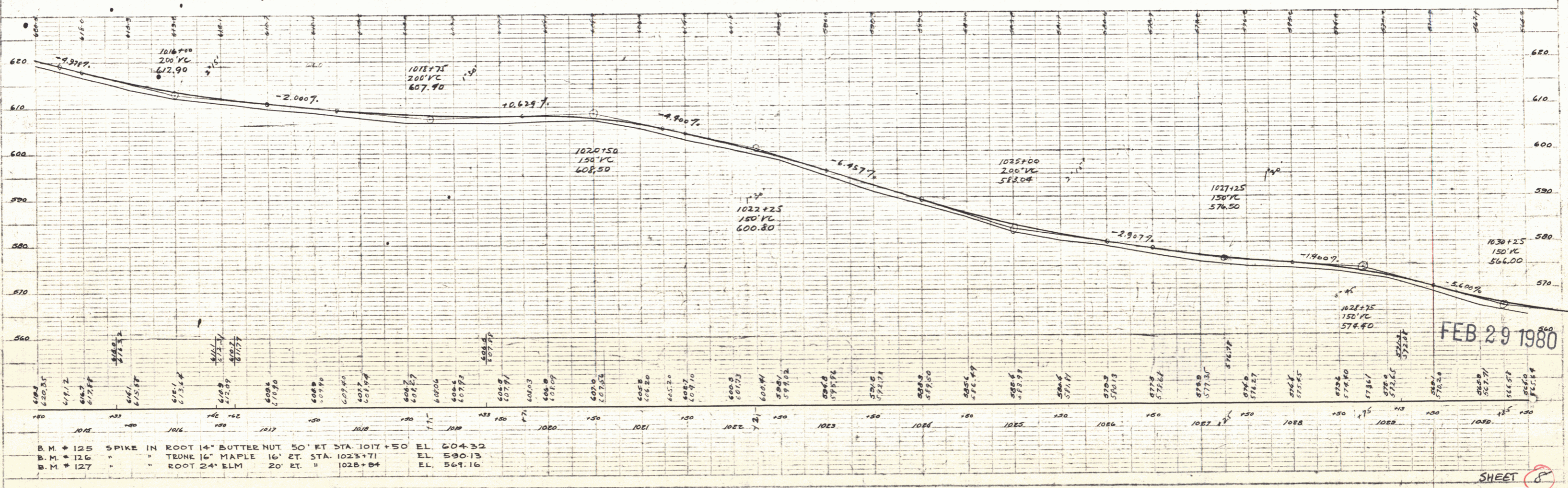
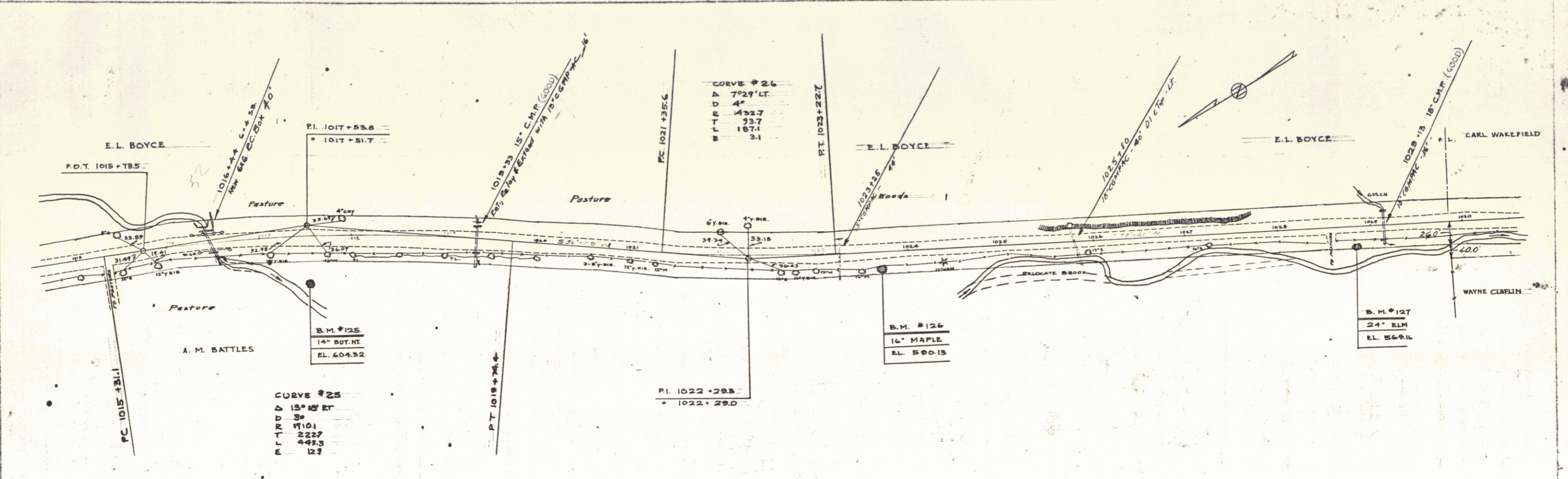


PLAN
 C. E. POTNAM
 D. MACCHI
 7/84
 TRACER
 D. MACCINI
 2/84



B.M. #125 SPIKE IN ROOT 14" BUTTER NUT 50' ET STA. 1017+50 EL. 604.32
 B.M. #126 " TRUNK 16" MAPLE 16' ET. STA. 1023+71 EL. 590.13
 B.M. #127 " ROOT 24" ELM 20' ET. " 1028+84 EL. 567.16

FEB. 29 1980

SHEET 8