

355
2472
PLAN
DATE
BY
CHECKED
DATE

355
2472
PLAN
DATE
BY
CHECKED
DATE

ITEM 435 REMAINING RELAYING WATER PIPE
STA 3+75 TO 4+80 ET.
ITEM 595-C ~ 1" GALV. WROUGHT IRON WATER PIPE
STA 4+07.5 RT - APPROX 4746. AS SHOWN

ITEM 549 ~ REMOVAL & DISPOSAL OF PRESENT G.R. (by others)
STA. 3+00 TO STA. 3+43 ET. = 43'
STA. 3+57 TO STA. 3+85 ET. = 31'
STA. 3+63 TO STA. 3+88 LT. = 25'
STA. 4+22 TO STA. 4+47 RT. = 45'
STA. 4+22 TO STA. 4+47 LT. = 25'
169'

ITEM 545-C Medium Duty Steel Beam Guard Rail w/ Steel Posts (by others)
STA. 3+37 TO STA. 4+92 ET. = 155'
STA. 3+65 TO STA. 3+90 LT. = 25'
STA. 4+20 TO STA. 4+65 LT. = 45'
225'

THE CONTRACT PORTION OF THIS PROJECT INCLUDES THE INSTALLATION OF A 26'-0" SPAN x 10'-6" RISE x 32'-0" LONG CGMP ARCH WITH POURED CONCRETE ABUTMENTS, HALF-CIRCLE HEIGHT WINGS AT THE INLET END, FULL HEADWALL AT THE OUTLET END, CHANNEL ENLARGEMENT AND PLACEMENT OF LIGHT-TYPE STONE FILL AS INDICATED ON THE PLANS AND CHANNEL SECTIONS, THE REMOVING AND RELAYING OF WATERLINES AS INDICATED, THE FILLING AND GRADING OF THE EXISTING WATER-WAY AREA AS SHOWN ON THE CHANNEL SECTIONS, AND THE BACK FILLING TO SUB-GRADE ELEVATION WITH GRANULAR BORON WITHIN THE LIMITS INDICATED ON THE ROAD-WAY SECTIONS AND AS DIRECTED BY THE ENGINEER ~ THE REMAINING WORK SHALL BE PERFORMED BY FORCES OF THE STATE OF VERMONT ~

CONSTRUCT DRIVES (by others)
3+0 ~ RT.
3+50 ~ LT.
CONSTRUCT APPROACH (by others)
TH#6 ~ 4+80 ~ LT.

EXISTING BRIDGE DATA
CONC. T-BEAM (1928)
SOLID RAIL
CLEAR SPAN - 30'
CLEAR HEIGHT - 12.5'
O.D. LENGTH - 33'
ROADWAY - 81'
WATERWAY - 400 SQ. FT.
DESIGN LOADING H-15

CURVE DATA
Δ 62°-48' RT.
D 34"
R 171.02
T 102.87
L 134.71
E 28.91

BETTERMENT PROJECT

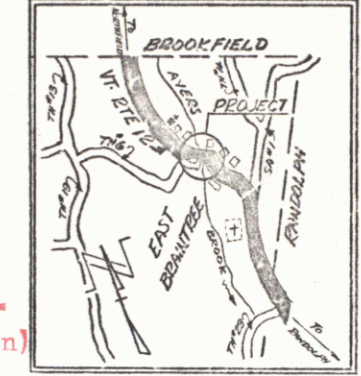
TOWN OF BRAINTREE

COUNTY OF ORANGE

VT. ROUTE 12 OVER AYERS BROOK

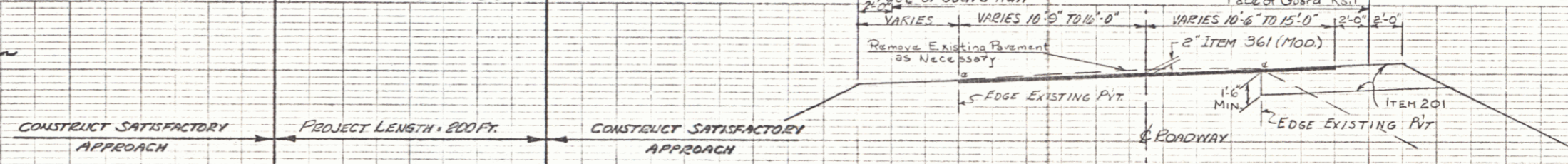
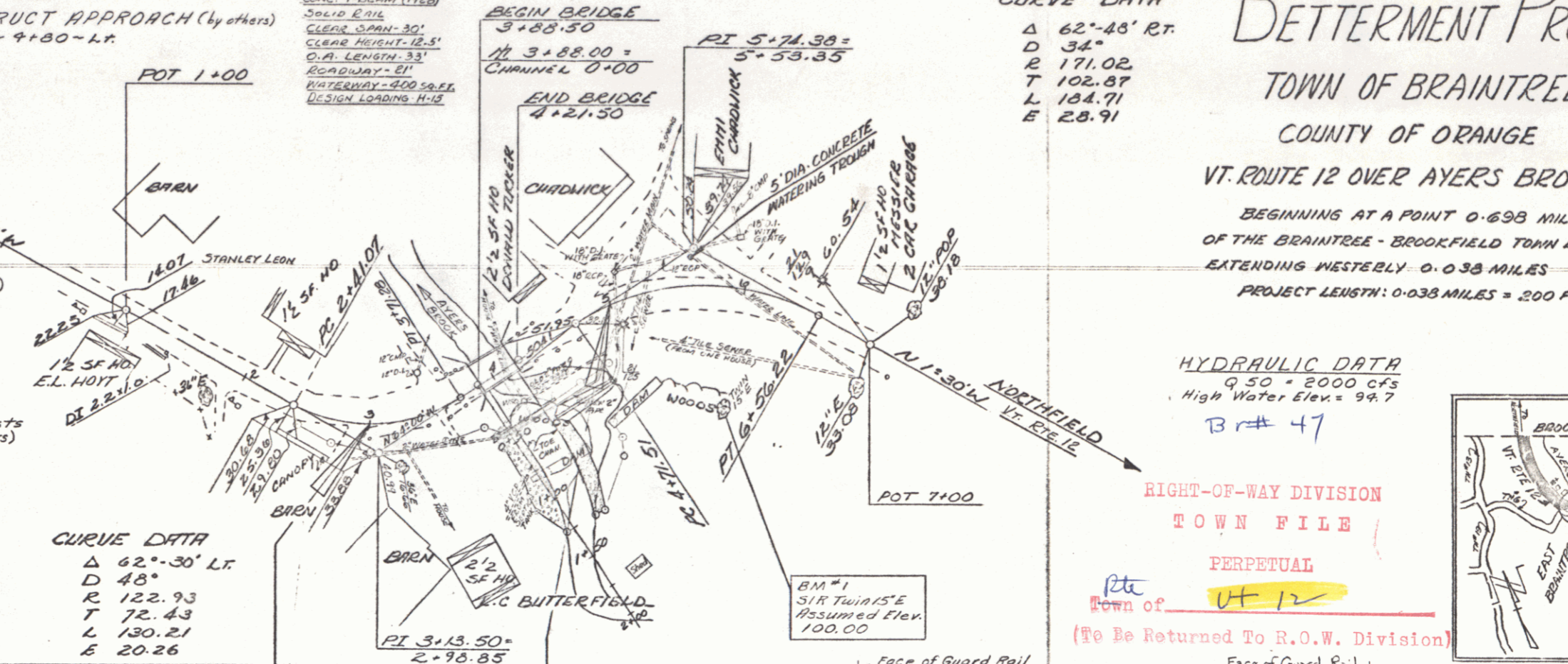
BEGINNING AT A POINT 0.698 MILES SOUTHERLY OF THE BRAINTREE - BROOKFIELD TOWN LINE AND EXTENDING WESTERLY 0.038 MILES
PROJECT LENGTH: 0.038 MILES = 200 FEET

HYDRAULIC DATA
Q 50 = 2000 cfs
High Water Elev. = 94.7
Br# 47



RIGHT-OF-WAY DIVISION
TOWN FILE
PERPETUAL
Town of VT 12
(To Be Returned To R.O.W. Division)

CURVE DATA
Δ 62°-30' LT.
D 48"
R 122.93
T 72.43
L 130.21
E 20.26



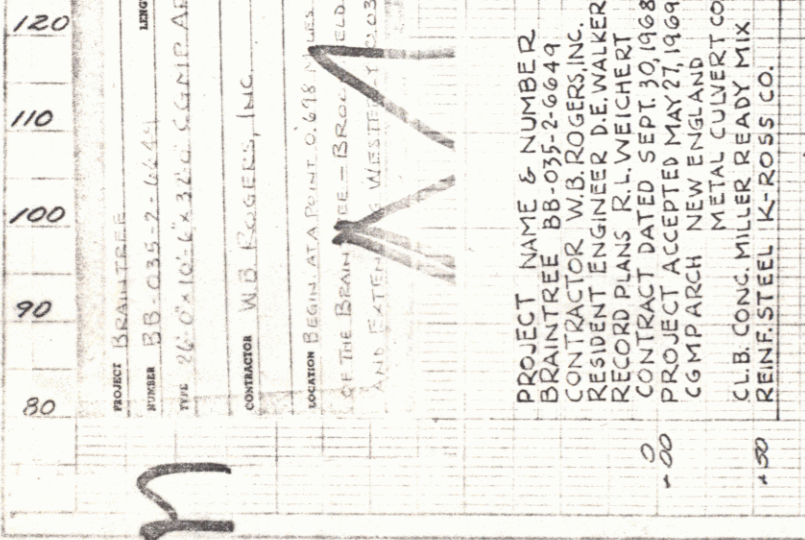
- INDEX OF SHEETS
- TITLE SHEET
 - PLAN & ELEVATION
 - BRIDGE QUANTITIES
 - BORING SHEET
 - TYPICAL SECTION & DETAILS
 - ARCH INLET & OUTLET DETAILS
 - REINFORCING STEEL SCHEDULE
 - R.O.W. LAYOUT
 - R.O.W. DETAILS
 - R.O.W. ROADWAY X-SECTIONS
 - CHANNEL X-SECTIONS

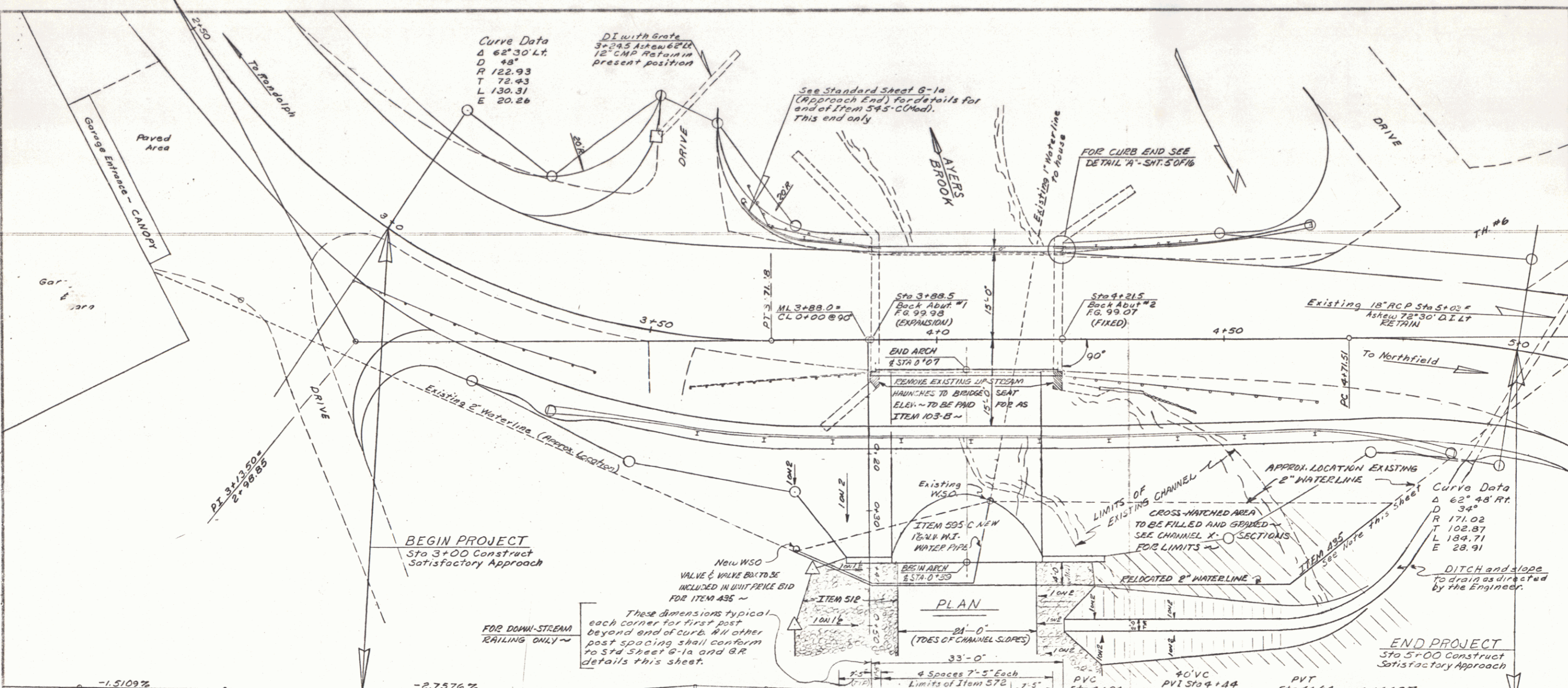
- STANDARD SHEETS
- FOR CONTRACT:
- 15E-33 1-6-67
 - 15E-38 1-4-68
 - 16S(B)-D6-57 1-24-68 @
- FOR FORCE ACCOUNT:
- B-13 3-1-65
 - E-35 1-4-67
 - E-36 1-4-68
 - G-18 7-11-67 8-11 1-11-68
 - SB-R1-64 11-3-66 (SHEET 2 OF 2)

RECOMMENDED FOR APPROVAL	<i>[Signature]</i>	5/24/68	120
DISTRICT ENGINEER		DATE	
RECOMMENDED FOR APPROVAL	<i>[Signature]</i>	5/21/68	110
BRIDGE ENGINEER		DATE	
RECOMMENDED FOR APPROVAL	<i>[Signature]</i>	5/21/68	110
CONSTRUCTION ENGINEER		DATE	
RECOMMENDED FOR APPROVAL	<i>[Signature]</i>	6/4/68	100
ASSISTANT CHIEF ENGINEER		DATE	
APPROVED BY	<i>[Signature]</i>	6/4/68	100
CHIEF ENGINEER		DATE	

TOWN OF
BRAINTREE
BB-035-2-6649
Pin # 992948
2/6/1968
SHEET 1 OF 15

PROJECT NAME & NUMBER
BRAINTREE BB-035-2-6649
CONTRACTOR
W.D. EGGERS, INC.
LOCATION
BEGINNING AT A POINT 0.698 MILES SOUTHERLY OF THE BRAINTREE - BROOKFIELD TOWN LINE AND EXTENDING WESTERLY 0.038 MILES
PROJECT DATED SEPT. 30, 1968
PROJECT ACCEPTED MAY 27, 1968
COMPARCH METAL CULVERT CO.
CLB. CONG. MILLER READY MIX
REINF. STEEL K. ROSS CO.





Curve Data
 Δ 62°30' Lt.
 D 48'
 R 122.93
 T 72.43
 L 130.31
 E 20.26

DI with Grate
 3x24.5 Ashew 624
 12" CMP Retain in
 present position

See Standard Sheet 6-1a
 (Approach End) for details for
 end of Item 545-C (Mod).
 This end only

FOR CURB END SEE
 DETAIL 'A' - SH. 5076

BEGIN PROJECT
 Sta 3+00 Construct
 Satisfactory Approach

END PROJECT
 Sta 5+00 Construct
 Satisfactory Approach

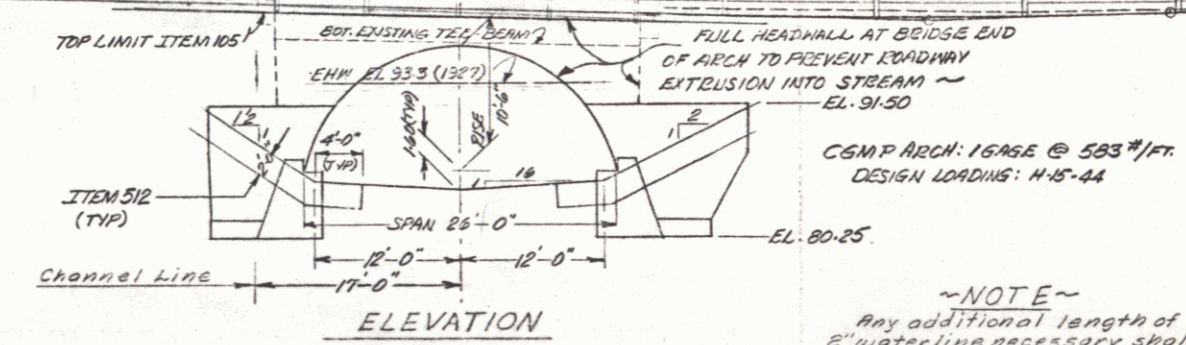
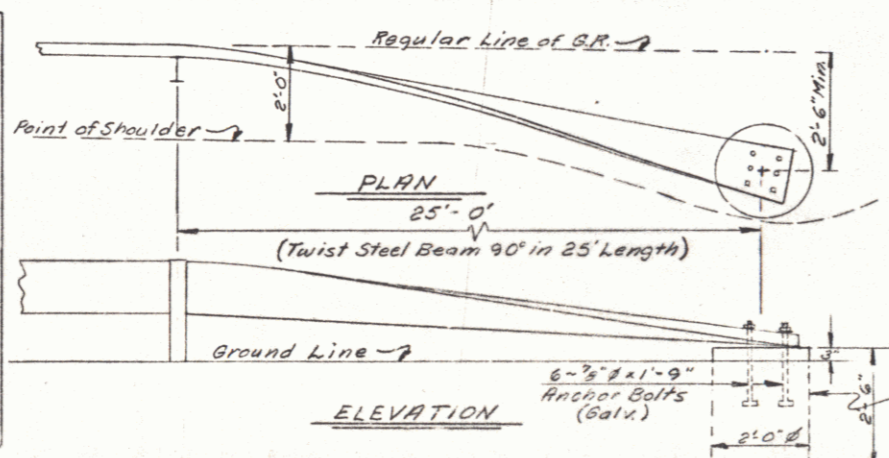
PVC Sta 2+51
 50' VC
 PVI Sta. 2+76
 EL 103.07

PVT Sta 3+01

PVC Sta 4+24
 40' VC
 PVI Sta 4+44
 EL 92.44

PVT Sta 4+64
 +2.4669%

STATION	LEFT	RIGHT
5+0	10'-9"	13'-6"
+75	11'-3"	14'-0"
+50	13'-3"	14'-6"
+25	14'-10"	15'-0"
4+0	15'-0"	15'-0"
+75	16'-0"	15'-0"
+50	15'-7"	13'-6"
+25	13'-6"	12'-0"
3+0	14'-4"	10'-6"



CSMP ARCH: 1645E @ 583#/FT.
 DESIGN LOADS: H-15-44

NOTE
 Any additional length of
 2" waterline necessary shall
 be furnished by the Contractor
 and the cost included in
 the unit price bid for Item
 435. Use same type of mat-
 erial as in existing waterline.

SEE SHEET #5 FOR GENERAL NOTES

STATE OF VERMONT
 DEPARTMENT OF HIGHWAYS

TOWN OF BRAINTREE

ROUTE No. VI. 12 LOG STA. 46+39
 VT ROUTE #12 OVER AYERS BROOK

GENERAL PLAN & ELEVATION

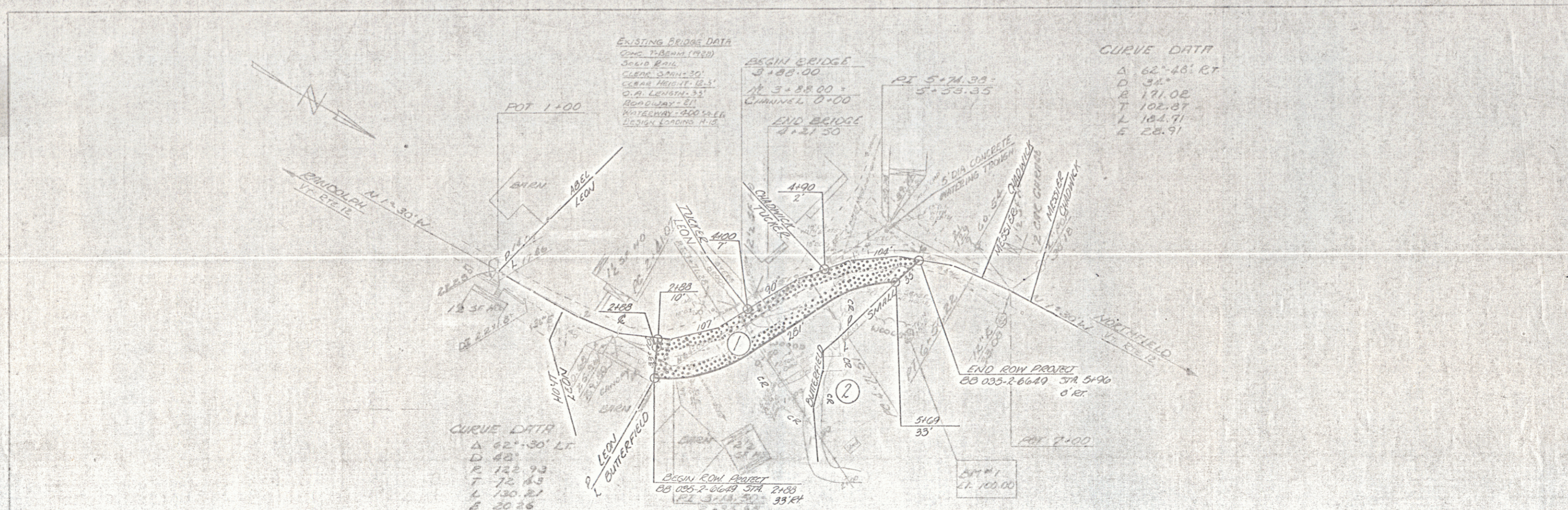
SCALE 1/8" = 1'-0"

SECTION R.L. MERCHANT
 SUPERVISOR

DRAWN BY CERUTTI CHECKED BY JURENTUPE

PROJECT No. BB-035-2-6649

SHEET 2 OF 10



BRIANTREE
 EQ-005-2-0649

STATE OF VERMONT
DEPARTMENT OF HIGHWAYS
RIGHT-OF-WAY PLANS
DETAIL SHEET
OF

TABLE OF PROJECT PROPERTY ACQUISITION

PARCEL NO.	GRANTOR	SHEET NO.	BEGINNING STATION	ENDING STATION	TAKING	REM.	RIGHTS	TITLE TAKEN	DATE	TOWN OR CITY RECORDED	BK.	PG.	REMARKS
1	BUTTERFIELD, LUCIUS C. SALSBOURY, LAURA B.		2+88 3+73.00	5+96 5+25.00	0.25 AC								CHANNEL (P) (5100 SF) RELOCATE WATER LINE
2	SMALL, J. SIMON F. GENEVIEVE H. (HFW)		3+96.00	4+57.00									CHANNEL (P) (900 SF)

TABLE OF REVISIONS

REVISION NO.	SHEET NO.	DESCRIPTION OF REVISION	DATE	MADE BY	APPROVED BY

TOWN FILE

PERPETUAL

Town of N. 12
(To Be Returned To R.O.W. Division)

MADE BY CW DATE 2-30-68
CHECKED BY CH DATE 2-30-68

— — — — — PRESENT R.O.W.
- - - - - TAKING WITHOUT ACCESS
- - - - - TAKING WITHOUT ACCESS ALONG PROPERTY LINES
- - - - - TAKING WITH ACCESS
(P) PERMANENT EASEMENT
(T) TEMPORARY EASEMENT

LEGEND
— SR — SR — SLOPE RIGHTS
— P — P — PROPERTY LINE
— Δ — Δ — TOP OF CUT
— O — O — JOE OF SLOPE

APPROVED Thomas C. Remety DATE 2-6-68
CHIEF OF ACQUISITION
APPROVED G. M. Lane DATE 2-6-68
HIGHWAY ENGINEER
APPROVED H. P. Keegan DATE 2-6-68
R.O.W. DIRECTOR

PROJECT BRAINTREE
NO. BB 035-2-6649
SHEET 9 OF 12

ROW