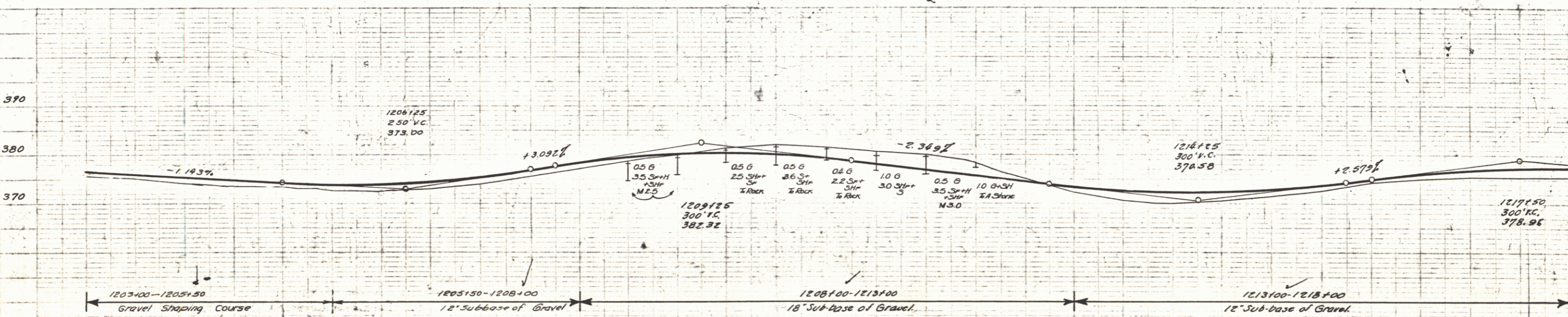
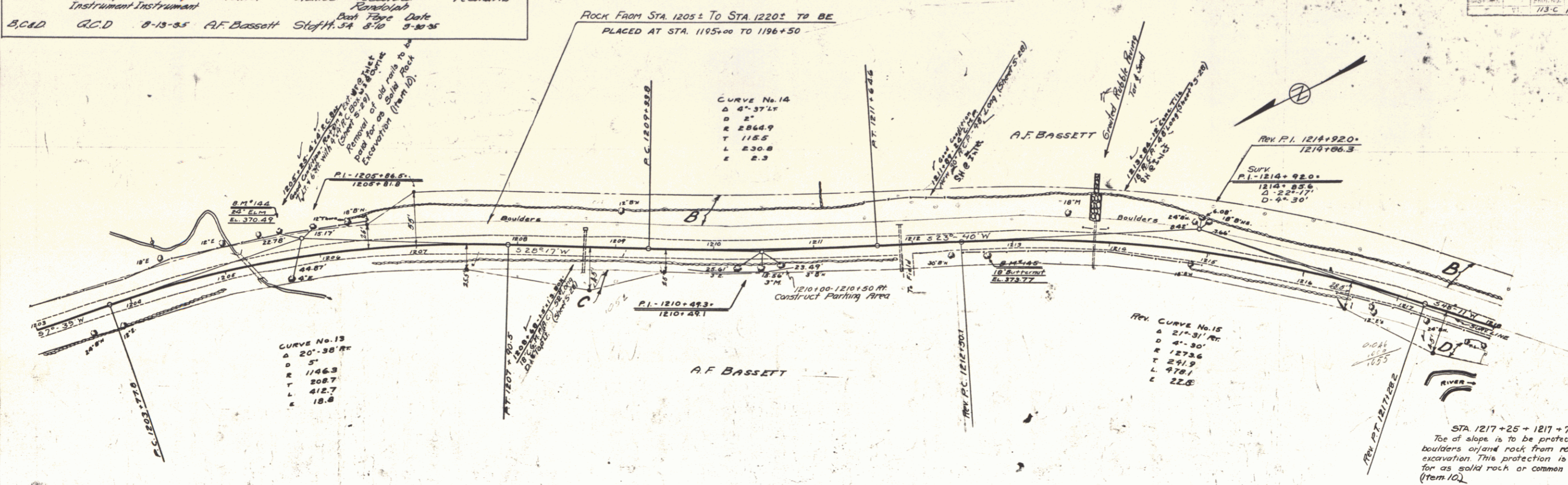


Parcel	Kind of Instrument	Date of Grant	Grantor	Grantee	Reversionary Redeemable	Remarks
B, C & D	G.C.D.	8-13-85	A.F. Bassett	Steff, J.A.	8/10	8-30-85

ROAD STATE DIST. MAP. SHEET TOTAL
713-C 1936 14 69



Station	Elevation
1203	375.6
1203+50	376.14
1204	374.1
1204+50	375.57
1205	373.7
1205+50	375.00
1206	373.3
1206+50	374.36
1207	373.0
1207+50	374.15
1208	374.32
1208+50	373.0
1209	374.1
1209+50	375.53
1210	375.6
1210+50	376.87
1211	377.64
1211+50	378.2
1212	378.8
1212+50	379.32
1213	380.0
1213+50	380.73
1214	380.28
1214+50	380.31
1215	382.0
1215+50	380.5
1216	381.5
1216+50	379.32
1217	379.80
1217+50	378.2
1218	380.0
1218+50	377.03
1219	376.8
1219+50	375.06
1220	376.7
1220+50	375.57
1221	375.1
1221+50	374.69
1222	374.0
1222+50	372.3
1223	372.8
1223+50	372.80
1224	370.1
1224+50	370.45
1225	370.3
1225+50	370.93
1226	370.7
1226+50	370.30
1227	371.6
1227+50	372.17
1228	372.5
1228+50	373.85
1229	374.45
1229+50	375.01
1230	375.2
1230+50	376.21
1231	375.5
1231+50	376.89
1232	376.5
1232+50	377.43
1233	377.5
1233+50	377.53

B.M. 144 Spike in Root 24' Elm 27 ft. N. Sta. 1205+62 Elev. 370.49.
B.M. 145 Spike in Root 18' Butternut 13 ft. N. Sta. 1212+73 Elev. 373.77

FEB 29 1980

SERIES F No. 1086
SHEET 14 OF 69