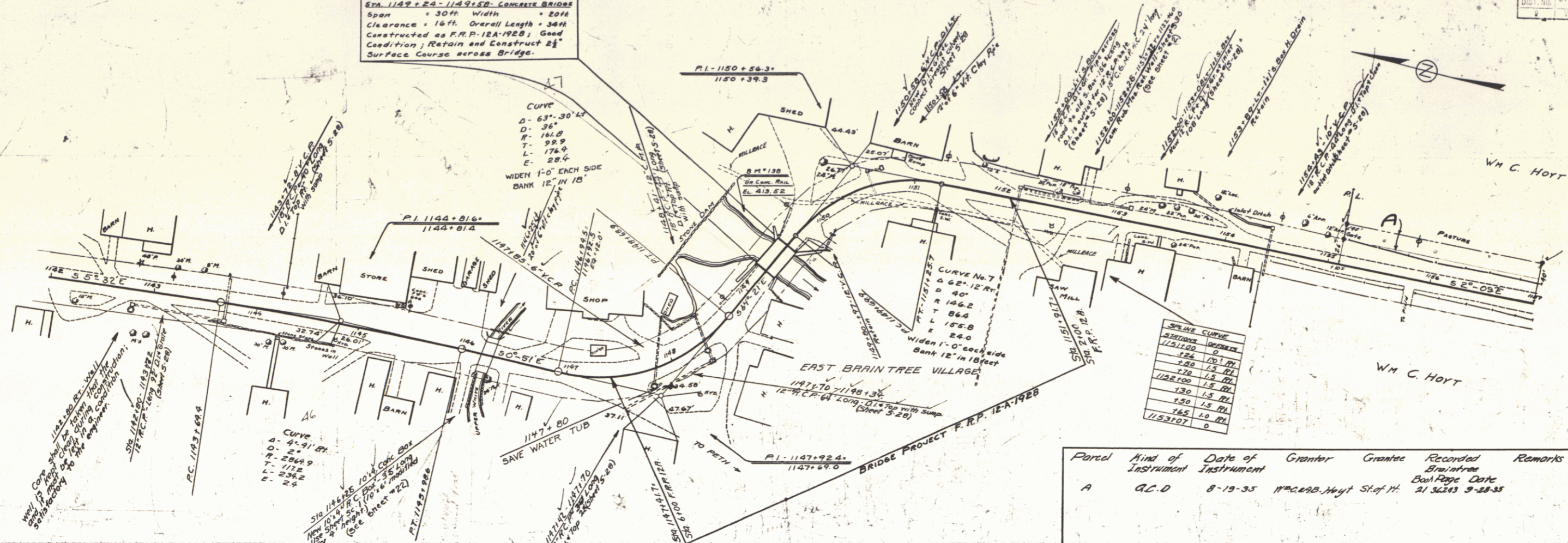
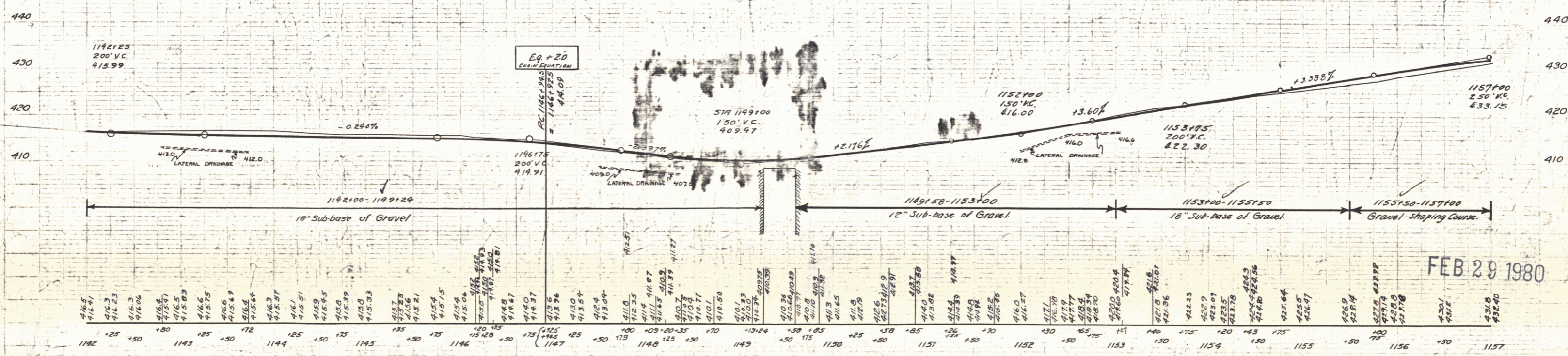


STA. 1149+24-1149+50 CONCRETE BRIDGE
 Span = 30 ft Width = 20 ft
 Clearance = 16 ft Overall Length = 36 ft
 Constructed as P.R.P. (12A-1928) Good
 Condition; Retain and Construct 2 1/2"
 Surface Course across Bridge.



Parcel	Kind of Instrument	Date of Instrument	Grantor	Grantee	Recorded	Remarks
A	G.C.D.	8-19-35	Wm. C. Hoyt	Stef. H.	21	3618 9-28-35



FEB 29 1980

B.M. 138 Paint Spot on Conc. Br. Rail - 10 ft. H Sta. 1149+25 Elev. 413.52