

INDEX OF SHEETS

SHEET NO.	TITLE PAGE
2	TYPICAL CROSS-SECTION OF IMPROVEMENT
3	PLAN AND PROFILE STA. 0+00 TO STA. 14+00
4	" " " " " " 14+00 " " 30+00
5	" " " " " " 30+00 " " 46+00
6	" " " " " " 46+00 " " 62+00
7	" " " " " " 62+00 " " 78+00
8	" " " " " " 78+00 " " 94+00
9	" " " " " " 94+00 " " 105+00
10	" " " " " " 105+00 " " 121+00
11	" " " " " " 121+00 " " 135+00
12	" " " " " " 135+00 " " 149+00
13	" " " " " " 149+00 " " 160+00
14, 15	OF BRIDGES
16-36	CROSS SECTIONS

FED. ROAD DIST. NO.	STATE	FED. AID PROJ. NO.	FISCAL YEAR	SHEET NO.	TOTAL SHEETS
3	VT.	70	1922	1	36

STATE OF VERMONT  
STATE HIGHWAY DEPARTMENT

PLAN AND PROFILE OF PROPOSED  
STATE HIGHWAY  
FEDERAL AID PROJECT

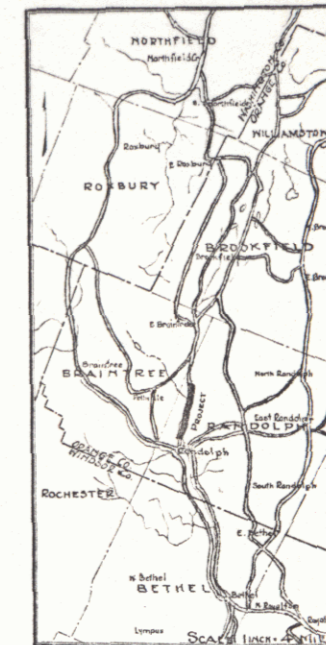
TOWN OF RANDOLPH  
BROOKFIELD GULF ROAD  
FROM NEWELL JONES'S HOUSE  
TO  
SILAS DASHNER'S NORTH LINE

Pin # 998946

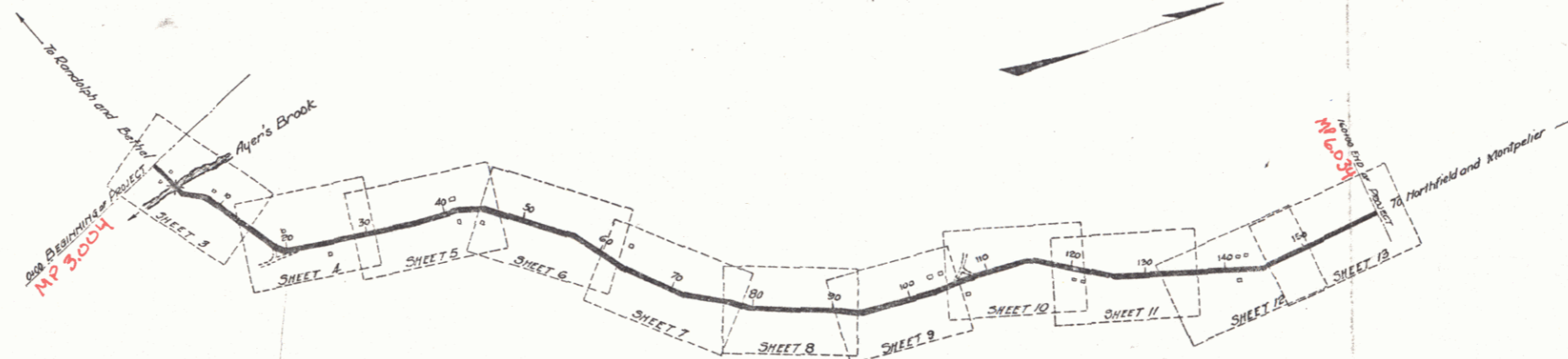
Project F 40

Rte. VT 12

SCALES { PLAN 1"=50 FT.  
PROFILE HORIZONTAL 1"=50 FT. VERT 1"=10 FT.  
CROSS SECTIONS 1"=5 FT.



(To Be Returned to R.O.W. Division)  
Town of VT 12  
PERMITAL  
TOWN FILE  
RIGHT-OF-WAY DIVISION



LAYOUT  
Scale: 1"=1000 Feet

CONVENTIONAL SIGNS

COUNTY LINE	---	GROUND ELEVATION	—▲—
TOWN LINE	----	GRADE ELEVATION	—▲—
FENCE LINE	-----		
STONE WALL	=====		
UNFENCED PROPERTY	.....		
GUARD RAIL	-----		
TRAVELED WAY	-----		
RAILROAD	-----		
RETAINING WALL	-----		
CENTER & SURVEY LINE	-----		
CULVERT	-----		
DROP INLET	-----		
TROLLEY POLE	▲		
POWER POLE	▲		
TELEPHONE POLE	▲		
TREES	▲		
HEDGE	-----		

CURVE DATA

DEFLECTION ANGLE	Δ
DEGREE OF CURVE	D.
RADIUS OF CURVE	R.
TANGENT DISTANCE	T.
LENGTH OF CURVE	L.
EXTERNAL DISTANCE	E.
POINT OF INTERSECTION	P. I.
POINT OF CURVE	P. C.
POINT OF TANGENT	P. T.

SUBMITTED BY ORDER OF THE STATE HIGHWAY BOARD  
[Signature]  
CHIEF ENGINEER  
DEPARTMENT OF HIGHWAYS

RECOMMENDED  
[Signature]  
DISTRICT ENGINEER  
BUREAU OF PUBLIC ROADS

RECOMMENDED FOR APPROVAL  
[Signature]  
CHIEF ENGINEER - BUREAU OF PUBLIC ROADS

APPROVED  
[Signature]  
DIRECTOR - BUREAU OF PUBLIC ROADS

1/1/22

SERIES F No. 10 filed  
Sheet 1 of 36

DIST. # 4 PLANS

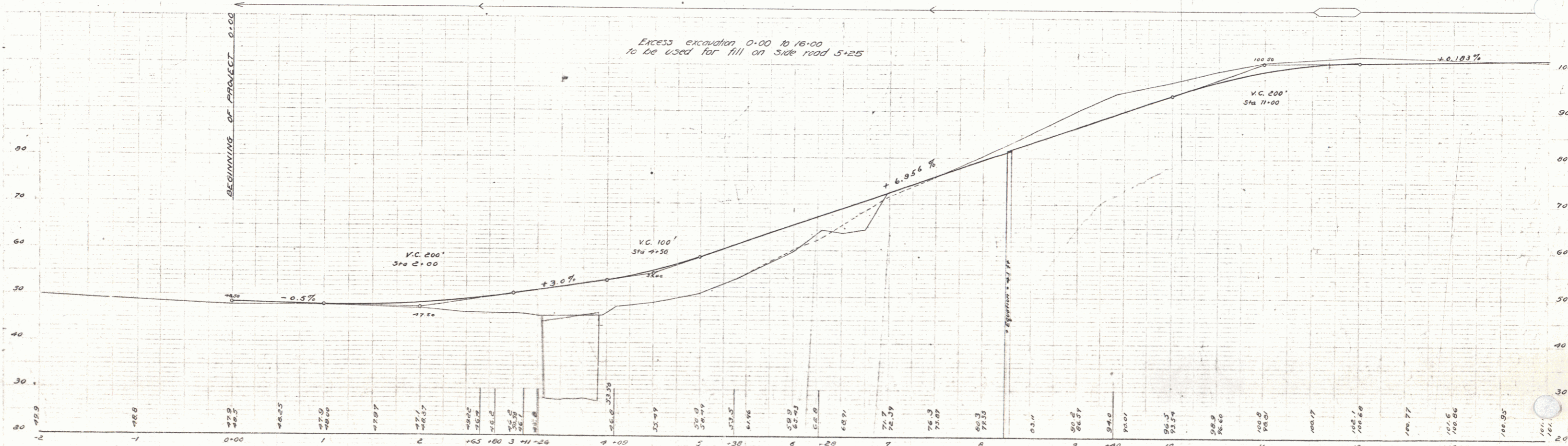
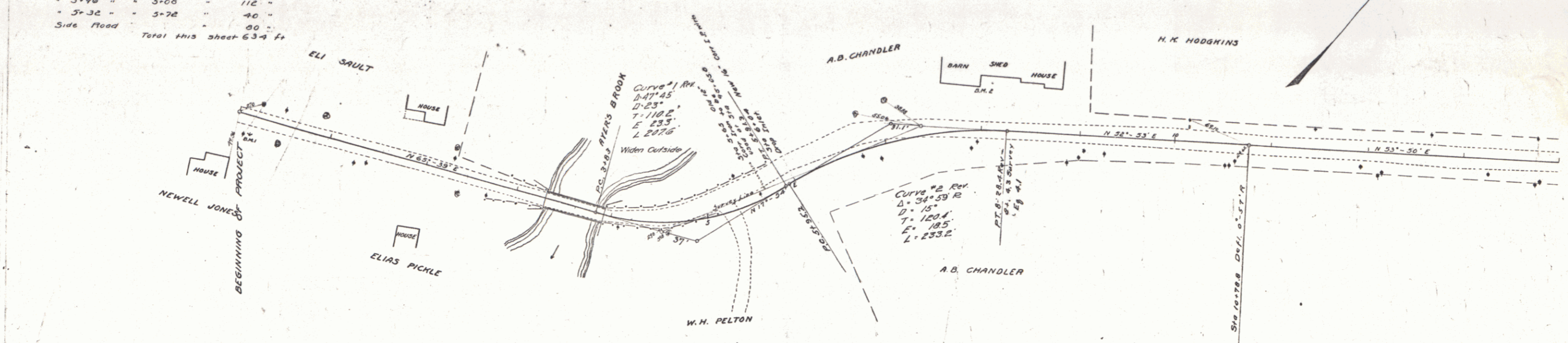
**GUARD RAIL REQUIRED**  
 On Left  
 Sta 2+54 to Sta 3+26 Length 72 feet  
 = 3+98 " " 6+32 " 236 "  
 On Right  
 Sta 2+54 to Sta 3+26 Length 72 feet  
 = 3+98 " " 3+00 " 112 "  
 = 3+32 " " 3+72 " 40 "  
 Side Road " " " 00 "  
 Total this sheet 634 ft

**NEW CULVERTS REQUIRED**  
 Sta 6+04 16" Cor. I.P. Drop inlet 3+4 ft  
 1-24-3 Conc Headwalls 1.3 Cu yds

NO. ROAD DIST. NO.	STATE	YEAR	SCALE	SHEET NO.	TOTAL SHEETS
9	VT	40	1/2" = 1'	3	36

W. E. Wainwright  
 S. L. French  
 S. E. French

W. E. Wainwright  
 S. L. French  
 S. E. French



B.M. #1 Top of Hydrant Rtd of Sta 0+16 Elev. 30.00  
 B.M. #2 S.E. corner of Base Board at Barn Lot of Sta 7+96 Elev. 52.71

Series R No. 40 Filled  
 Sheet 3 of 36

**GUARD RAIL REQUIRED**

On Left	
Sta 15+00 to Sta 16+12	Length 24 ft.
24+63	24+07
29+30	29+02
On Right	
Sta 15+00 to Sta 16+12	Length 24 ft.
24+63	24+07
29+30	29+02
Total this sheet 144 ft.	

**NEW CULVERTS REQUIRED**

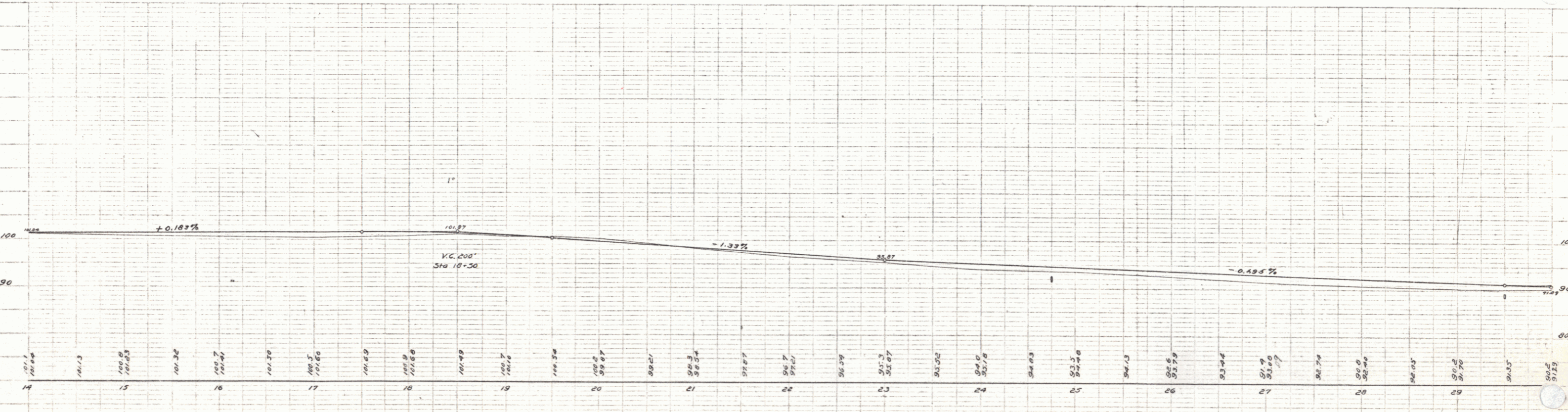
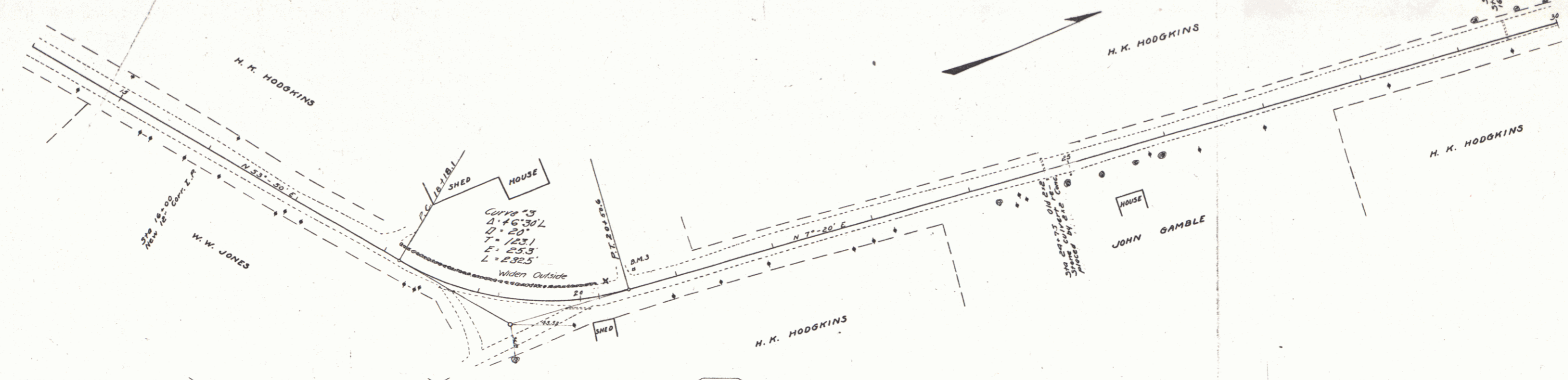
Sta 16+00	12" Corr Iron	26 ft.
	1-2% Conc. Headwalls	1 cu yd.
Sta 24+75	2x2 Concrete	
	1-2-4 "	5.3 cu yds
	1-2% Conc. Headwalls	7.1 cu yds
Sta 29+30	16" Corr Iron	20 ft.
	1-2% Conc. Headwalls	15 cu yds

**SUB BASE REQUIRED**  
Sta 20+00 to Sta 30+00 length 1000 ft.

FED. ROAD DIST. NO.	STATE	FED. AID PROJ. NO.	SECTION	SHEET NO.	TOTAL SHEETS
9	VI	40	1922	4	36

W.E. HODGKINS  
 G.L. PHILLIPS  
 CIVIL ENGINEERS  
 1000 N. 10th St.  
 ST. LOUIS, MO.

W.E. HODGKINS  
 G.L. PHILLIPS  
 CIVIL ENGINEERS  
 1000 N. 10th St.  
 ST. LOUIS, MO.



B.M. \*3 N.E. corner Base of N. Gate post E. Entrance Left of Sta. 20+00 Elev. 100.14

Series F No 40 Filed Sheet 4 of 36



**GUARD RAIL REQUIRED**

On Left		
Sta 46+50 to Sta 54+26	Length	776 ft.
• 55+94 •	• 36+18 •	24 •
• 60+00 •	• 62+00 •	200
On Right		
Sta 53+53 to Sta 53+77	Length	24 ft.
• 55+94 •	• 36+18 •	24 •
• 60+50 •	• 61+26 •	96 •
Total this sheet 1144 ft.		

**NEW CULVERTS REQUIRED**

Sta 53+65	16" Corr Iron	40 ft
1-2 1/2-5 Conc. Headwalls 1.5 cu yds		
Sta 56+06	10" Corr Iron	2 ft
1-2 1/2-5 Conc. Headwalls 1.5 cu yds		
Sta 60+93	12" Corr Iron	36 ft
1-2 1/2-5 Conc. Headwalls 1 cu yd		

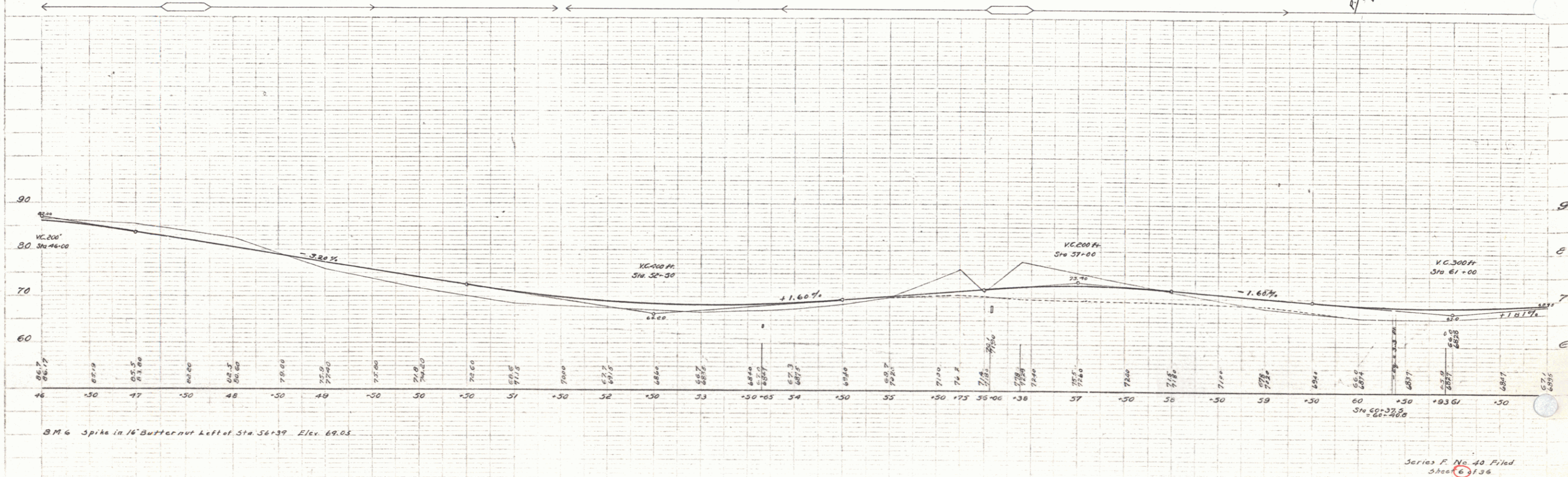
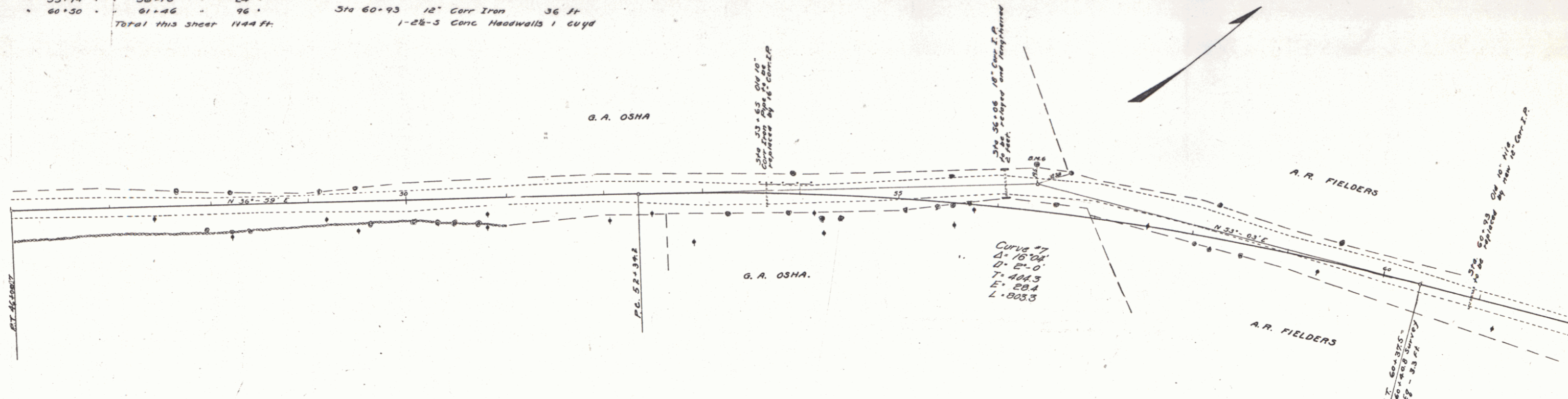
**RELAYING PIPE CULVERTS**

Sta 56+06	10" Corr Iron	28 ft.
STANDARD UNDERDRAIN		
Sta 53+00 to Sta 55+00	200 ft	

**SUB-BASE REQUIRED**

Sta 54+75 to Sta 59+50	length	475 ft
------------------------	--------	--------

PER ROAD DIST. IN	STATES	PER 100 YDS. PER 100 YDS. PER 100 YDS.	TOTAL
9	Vt	4.0	1922 6 36



Series F. No. 40 Filed  
Sheet 136

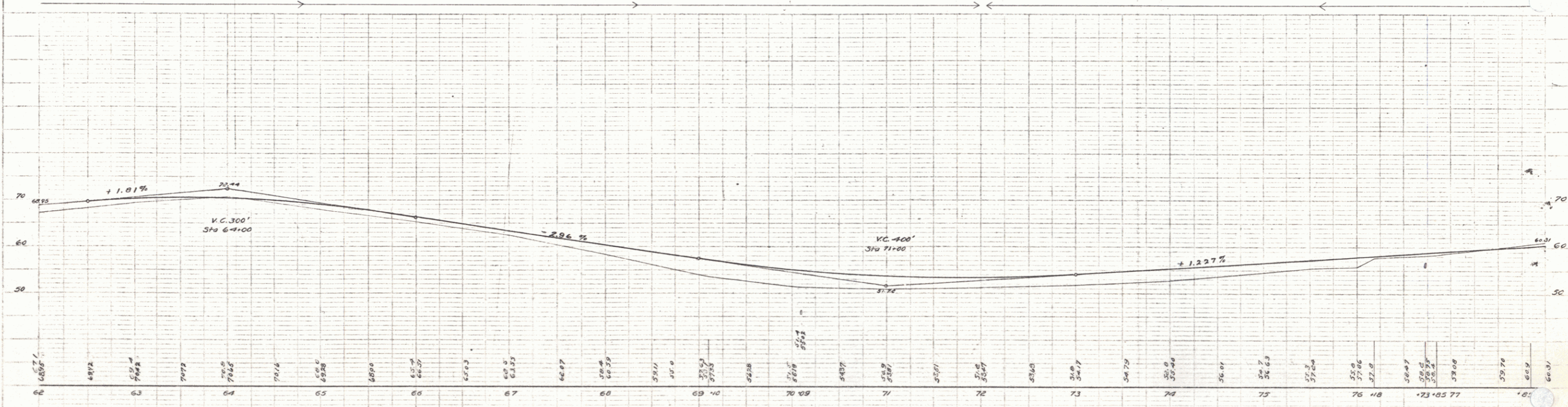
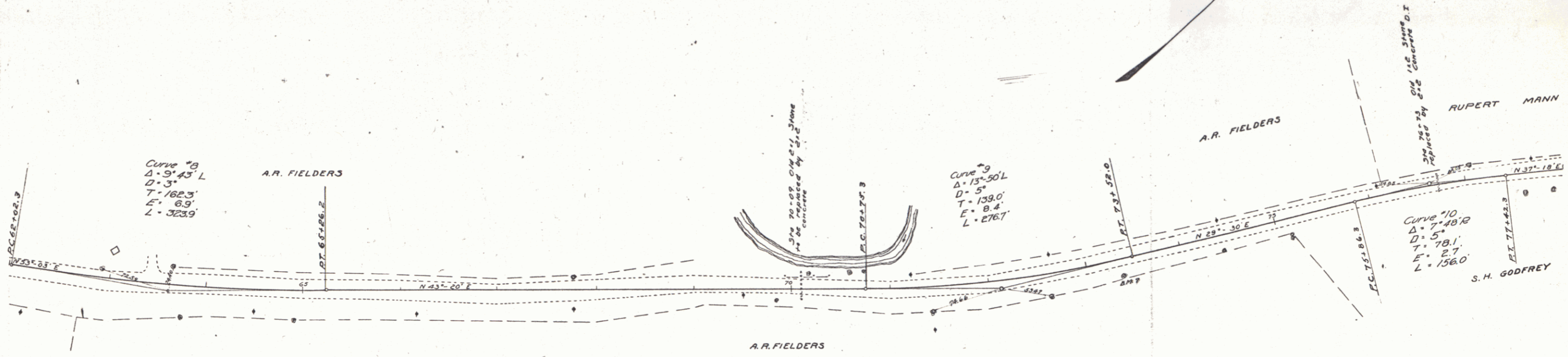
5

**GUARD RAIL REQUIRED**  
 On Left  
 Sta 62+00 to Sta 63+20 Length 120 ft.  
 69+97 - 70+21 24'  
 75-75 - 76+07 112'  
 On Right  
 Sta 69+97 to Sta 70+21 Length 24 ft.  
 76+61 - 76+85 24'  
 Total this sheet 312 ft.

**NEW CULVERTS REQUIRED**  
 Sta 70+09 2x2 Concrete 7.3 cu yds  
 1-2-4 Concrete 9.1 -  
 1-2B-3 -  
 Sta 76+73 2x2 Concrete D.I.  
 1-2-4 Concrete 6.0 cu yds  
 1-2B-3 - 7.9 -

**SUBBASE REQUIRED**  
 Sta 62+50 to Sta 68+50 length 600 ft  
 Sta 71+00 to Sta 78+00 length 700 ft

FED. ROAD DIST. NO.	STATE	FED. AID PROJ. NO.	FISCAL YEAR	SHEET NO.	TOTAL SHEETS
9	VT	40	1922	7	36



B.M. #7 Spike in 20' Elm Rt. of Sta. 73+36 Elev. 53.39

Series F. No. 40 Filed  
 Dec 13 1922

W.C. Mather  
 G.L. Miller  
 G.A. Fisher  
 Supt.

W.C. Mather  
 G.L. Miller  
 G.A. Fisher  
 Supt.

6

**GUARD RAIL REQUIRED**

Station	Length	Notes
Sta 70+60 to Sta 83+24	124 ft	On Left
86+37	24 "	
87+30	200 "	
90+70	22 "	
Sta 70+60 to Sta 70+92	24 ft	On Right
80+70	24 "	
86+37	24 "	
90+70	22 "	
Total this sheet 796 ft		

**NEW CULVERTS REQUIRED**

Sta 70+00	12" Corr Iron	30 ft	
	1-2 1/2-3 Conc. Headwalls	1 cu yd	
Sta 80+02	2x2 Concrete		
	1-2-4	5.3 cu yds	
	1-2 1/2-3	7.1 "	
Sta 90+90	2x2 Concrete		
	1-2-4	5.3 cu yds	
	1-2 1/2-3	7.1 cu yds	
Sta 86+69	24" Corr Iron	6 ft	
	1-2 1/2-3 Conc. Headwalls	1.3 cu yds	

**RELAYING PIPE CULVERTS**

Sta 86+69	24" Corr Iron	30 ft
	1-2 1/2-3 Conc. Headwalls	1.3 cu yds

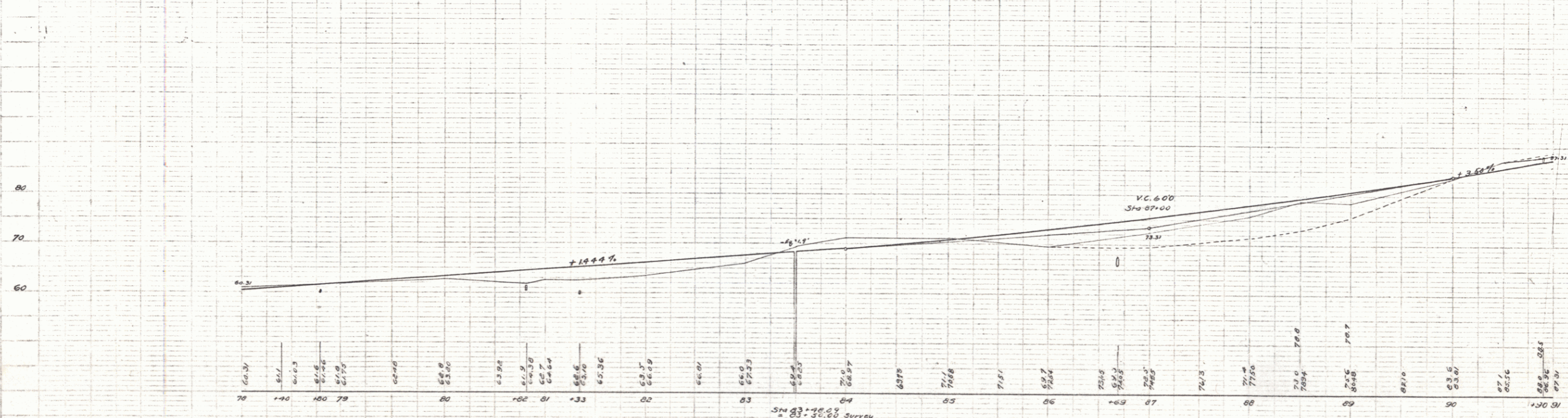
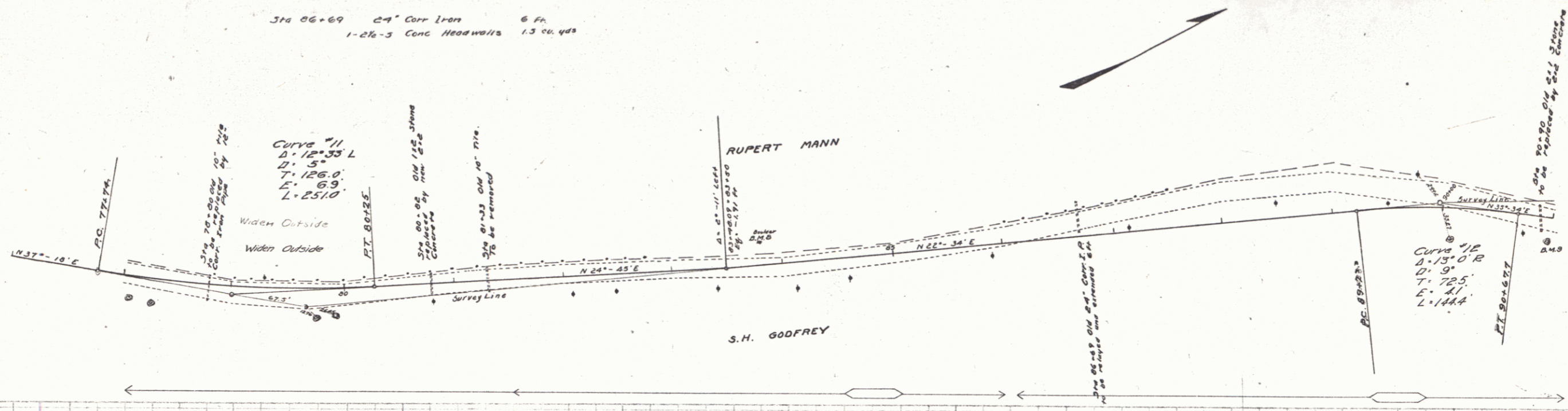
**SUBBASE REQUIRED**

Sta 70+00 to Sta 91+00 length 1300 ft.

DIST NO	SHEET NO	YEAR	SHEET NO	TOTAL SHEETS
9	40	1923	8	36

W.C. MANN  
D.L. FINE  
G.E. DEAN

W.C. MANN  
D.L. FINE  
G.E. DEAN



B.M. #8 Top of Boulder Left of Sta 83+80 Elev 69.32  
 B.M. #9 Spike in Elm Rt of Sta 90+94 Elev 70.67

Series F No. 40 Filed  
 Sheet 8 of 36

**GUARD RAIL REQUIRED**

Sta	Length	On Left	On Right
Sta 91+00 to Sta 91+02	Length 02. ft		
91+50 - 92+70	120		
94+50 - 97+06	256		
101+36 - 102+24	88		
103+60 - 103+92	32		
Sta 91+00 to Sta 91+02	Length 02. ft		
91+00 - 92+12	24		
94+93 - 95+17	24		
96+01 - 97+05	24		
101+30 - 101+82	24		
103+60 - 103+92	24		
Total this sheet 620 ft			

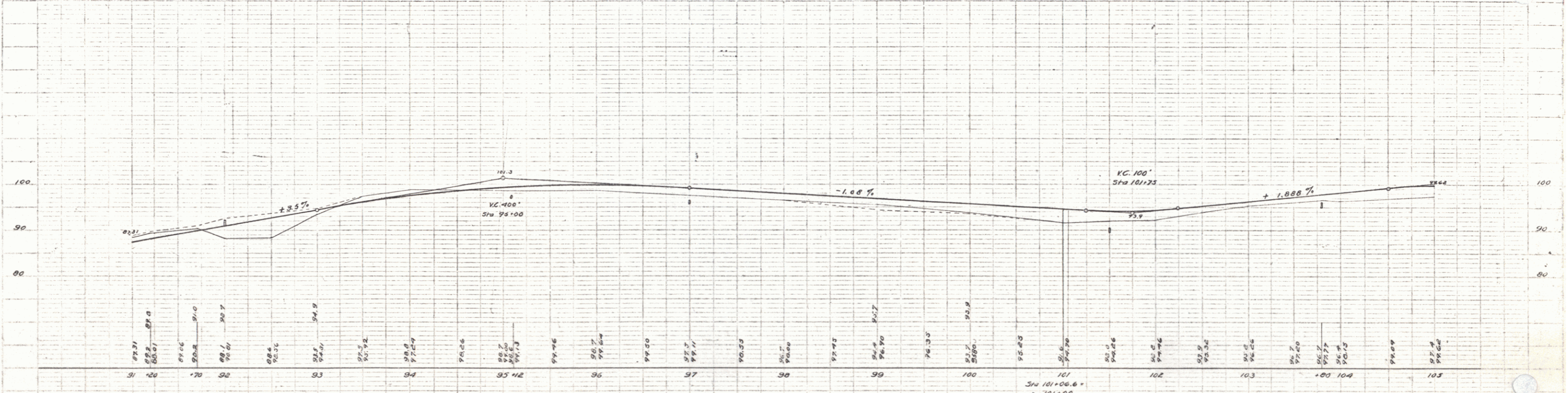
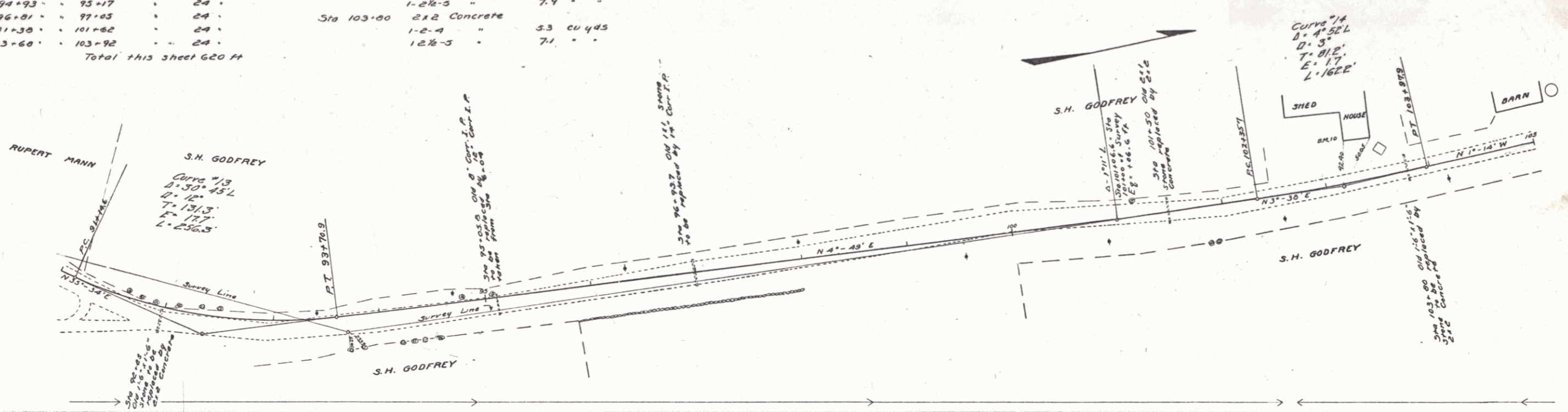
**NEW CULVERTS REQUIRED**

Sta	Material	Quantity
Sta. 92+25	2x2 Concrete	
	1-2-4 "	37 cu yds
	1-2 1/2-5 "	7.5 "
Sta 96+93.7	14" Corr. Iron 30'	
	1-2 1/2-5 Conc. Headwalls 1.0 cu yds	
Sta 101+50	2x2 Concrete	
	1-2-4 "	6.0 cu yds
	1-2 1/2-5 "	7.9 "
Sta 103+00	2x2 Concrete	
	1-2-4 "	5.3 cu yds
	1-2 1/2-5 "	7.1 "

**RELAYING PIPE CULVERTS**

Sta	Material	Quantity
Sta 95+05.0	12" Corr Iron 36 ft	
	Relayed from Sta 6+0.4	
	1-2 1/2-5 Conc. Headwalls	1 cu yd
<b>SUBBASE REQUIRED</b>		
Sta 91+00 to Sta 103+00	length	1400 ft

JOB NO.	STATION	DATE	SHEET NO.	TOTAL SHEETS
9	VI	40	1922	9



B.M. #10 Bottom S.E. corner board House Left of Sta. 103+17 Elev. 92.88

Sta 101+06.6 =  
= 101+00  
Eg = +06.6'

Series F No. 38 Filed  
Sheet 9 of 36

**GUARD RAIL REQUIRED**

On Left

Sta 110+79 to Sta 111+03	Length 24 ft.	
112+93	113+17	24
113+75	114+15	40
119+57	120+21	64

On Right

Sta 110+79 to Sta 111+03	Length 24 ft.	
112+93	113+17	24
119+57	119+81	24

Total this sheet 224'

**NEW CULVERTS REQUIRED**

Sta 110+91	14" Corr Iron	32 ft.
	1-2 1/2-3 Conc. Headwalls	1 cu yd.
Sta 113+05	18" Corr Iron	8 ft.
	1-2 1/2-3 Conc. Headwalls	1.3 cu yds
Sta 119+69	24" Corr Iron	12 ft.
	1-2 1/2-3 Conc. Headwalls	1.5 cu yds

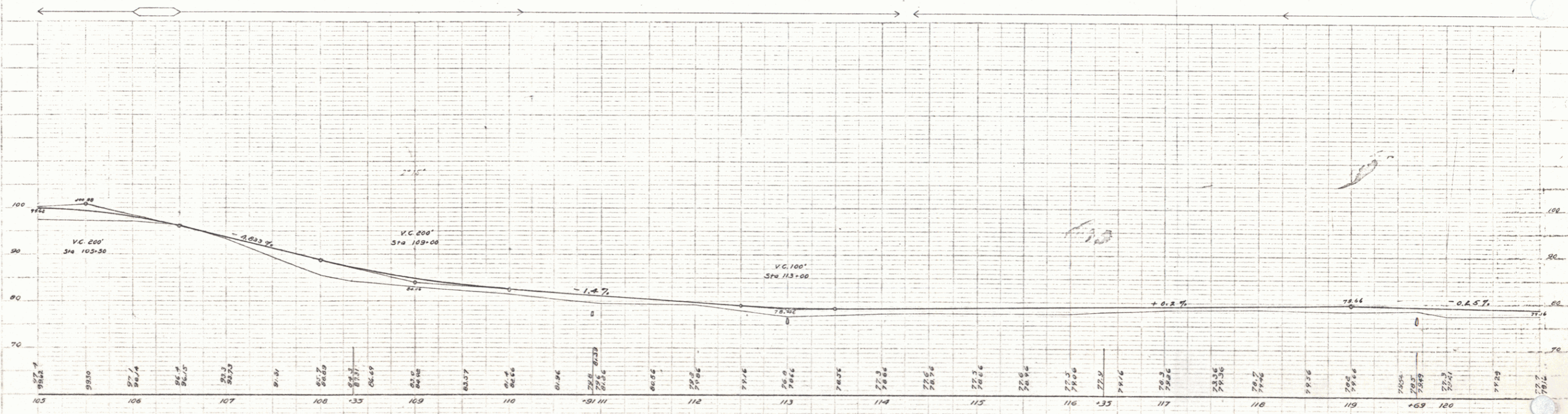
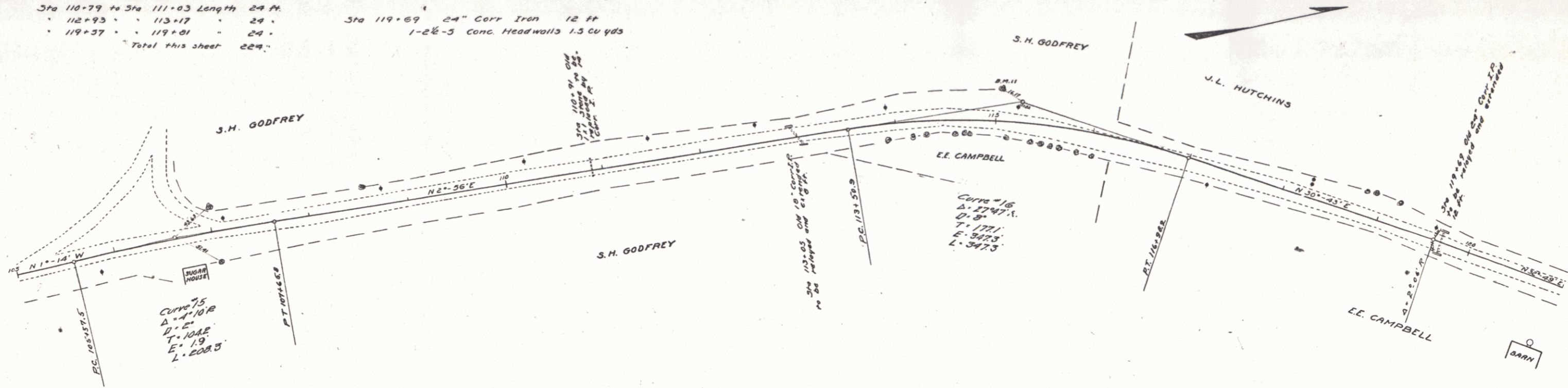
**RELAYING PIPE CULVERTS**

Sta 113+05	18" Corr Iron	28 ft.
Sta 119+69	24" Corr Iron	24 ft.

**SUBBASE REQUIRED**

Sta 103+00 to Sta 121+00	length 1800 ft.
--------------------------	-----------------

PER ROAD	STATE	FED. AID	PERCENT	SHEET	TOTAL
9	VI	+0	1923	10	36



B.M. "11 Spike in 8" Elm Left of Sta. 115+00 Elev. 79+33

Series P. No. Filed  
Sheet 10 of 36



**GUARD RAIL REQUIRED**  
 On Left  
 Sta 135+00 to Sta 135+00 Length 00 ft  
 - 139+00 - 139+32 - 24 -  
 - 143+40 - 147+40 - 400 -  
 On Right  
 Sta 135+36 to Sta 135+60 Length 24 ft  
 - 139+00 - 139+32 - 24 -  
 - 143+40 - 143+64 - 24 -  
 Total this sheet 504 -

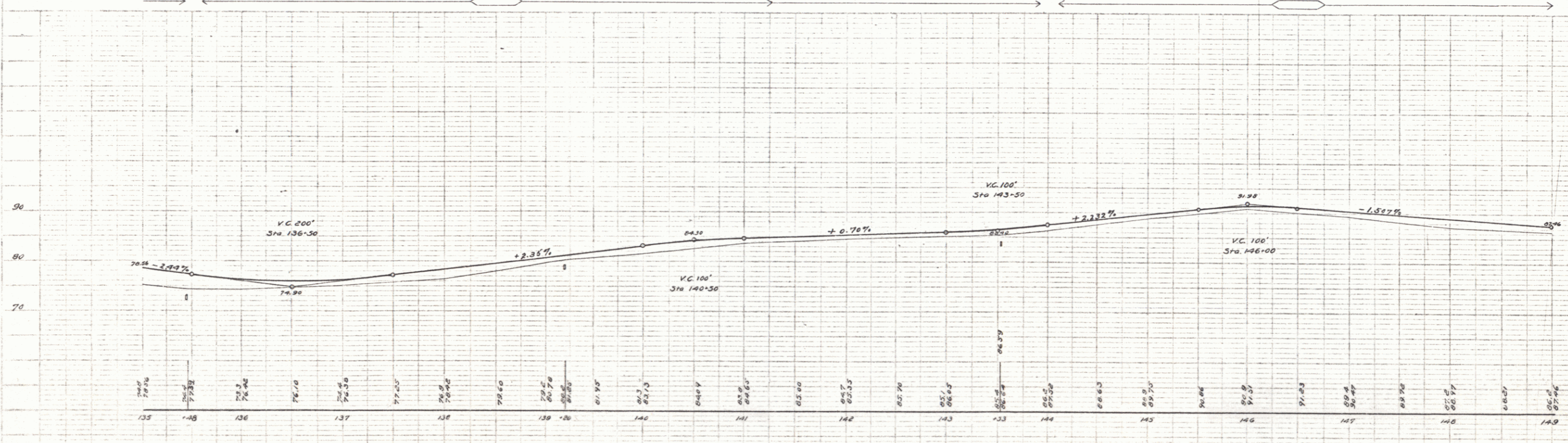
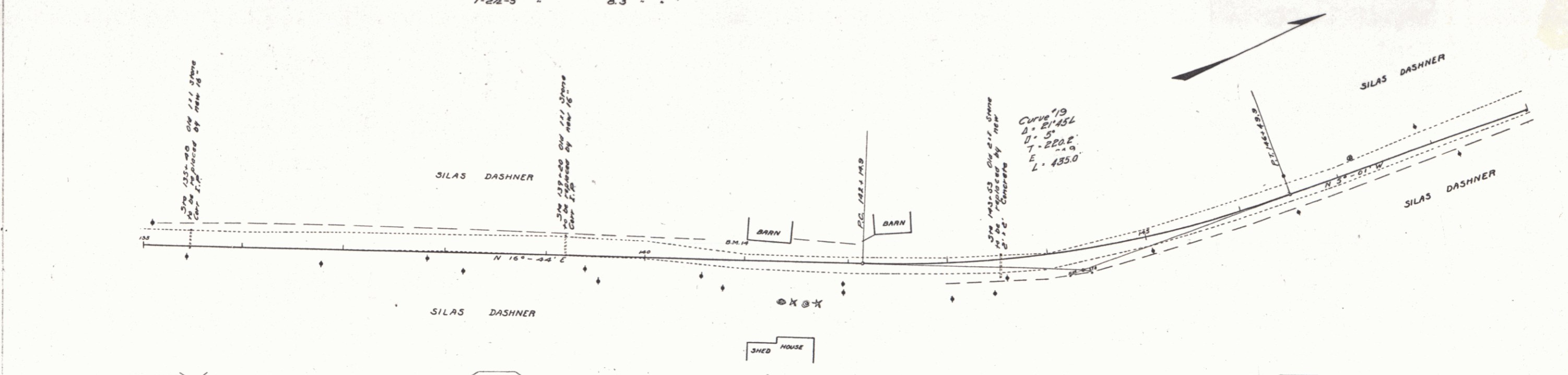
**NEW CULVERTS REQUIRED**  
 Sta 135+48 16" Corr Iron 34 ft  
 1-2 1/2-5 Conc Headwalls 1.5 cu yds  
 Sta 139+20 16" Corr Iron 26 ft  
 1-2 1/2-5 Conc Headwalls 1.5 cu yds  
 Sta 143+53 2x2 Concrete  
 1-2-4 - 6.5 cu yds  
 1-2 1/2-5 - 0.3 -

**SUBBASE REQUIRED**  
 Sta 136+80 to Sta 149+00 length 1220 ft

JOB NO.	STATE	PROJECT	SHEET NO.	TOTAL SHEETS
9	VT	40	122	36

PLAN  
 M.E. Walker  
 G.L. Field  
 H.E. Smith

SECTION  
 M.E. Walker  
 G.L. Field  
 H.E. Smith



BM 18 Stone under S.E. corner of Barn left of Sta. 141+03 Elev. 85.87

**GUARD RAIL REQUIRED**  
 ON LEFT  
 Sta 149+63 to Sta 149+87 Length 24 ft  
 " 136+30 " " 138+94 " 26 ft  
 ON RIGHT  
 Sta 149+63 to Sta 149+87 Length 24 ft  
 " 150+70 " " 150+94 " 24 ft  
 Total this sheet 336 lin. ft

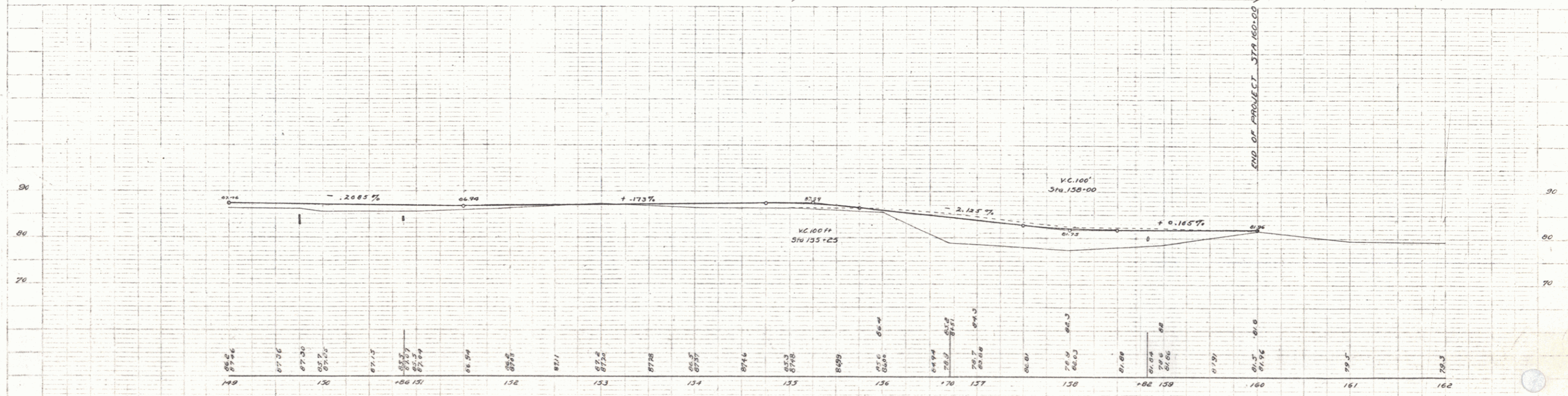
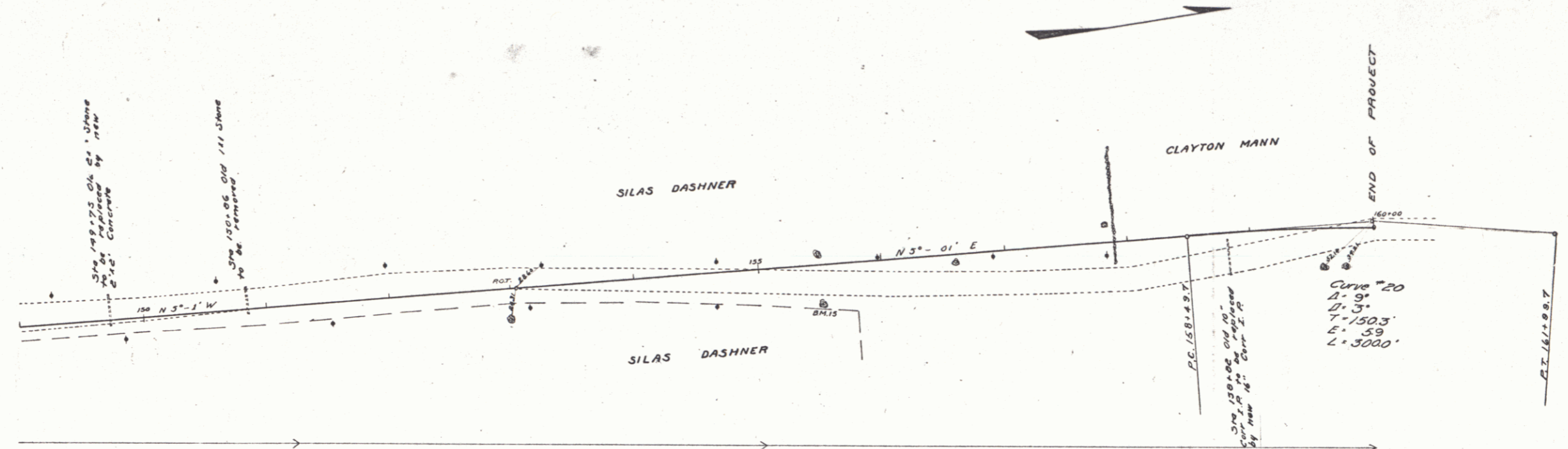
**NEW CULVERTS REQUIRED**  
 Sta 149+75 2x2 Concrete 5.3 cu yds  
 " 1-2-4 " " 7.3 " "  
 " 1-2 1/2-5 " " " "  
 Sta 150+02 16" Corr Iron 28 ft  
 " 1-2 1/2-5 Conc. Headwalls 1.5 cu yds

**Sub BASE REQUIRED**  
 Sta 149+00 to Sta 156+50 length 750 ft

Proj. No.	Sheet No.	Proj. No.	Year	Total Sheets
9	VI	40	1921	13

W. E. Warner  
 C. L. Field  
 1921

W. E. Warner  
 C. L. Field  
 1921



B.M. 15 Spike in back side of Elm. Rt. of Sta. 155+50 Elev. 88.76

Series F No. 10 Piled  
 Sheet 13 of 36