

GUARD RAIL REQUIRED
 ON LEFT
 Sta 149+63 to Sta 149+87 Length 24' ft
 " 136+30 " " 138+94 " 26' ft
 ON RIGHT
 Sta 149+63 to Sta 149+87 Length 24' ft
 " 150+70 " " 150+94 " 24' ft
 Total this sheet 336 lin. ft

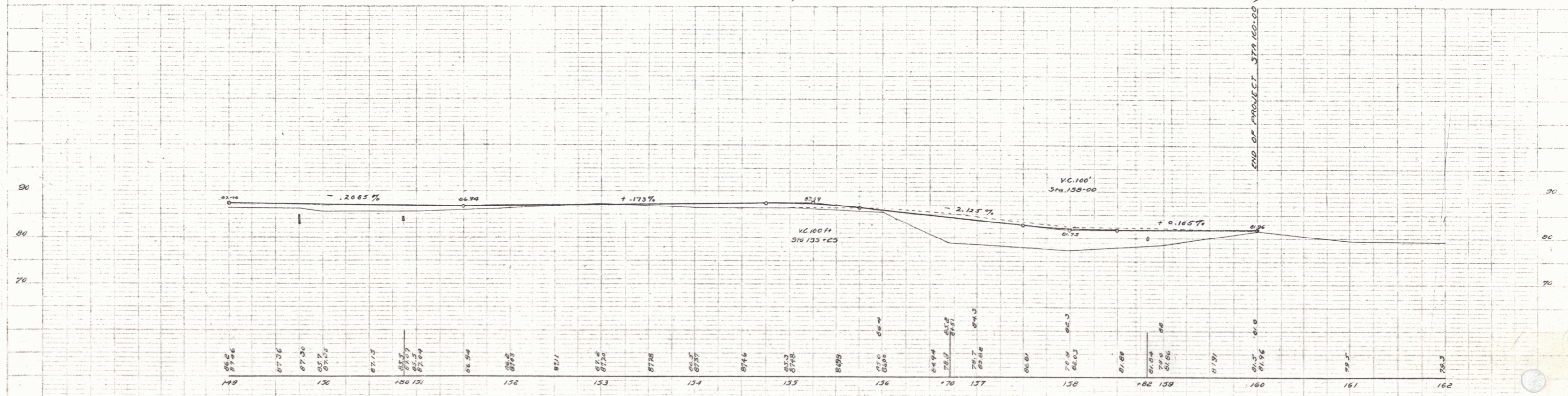
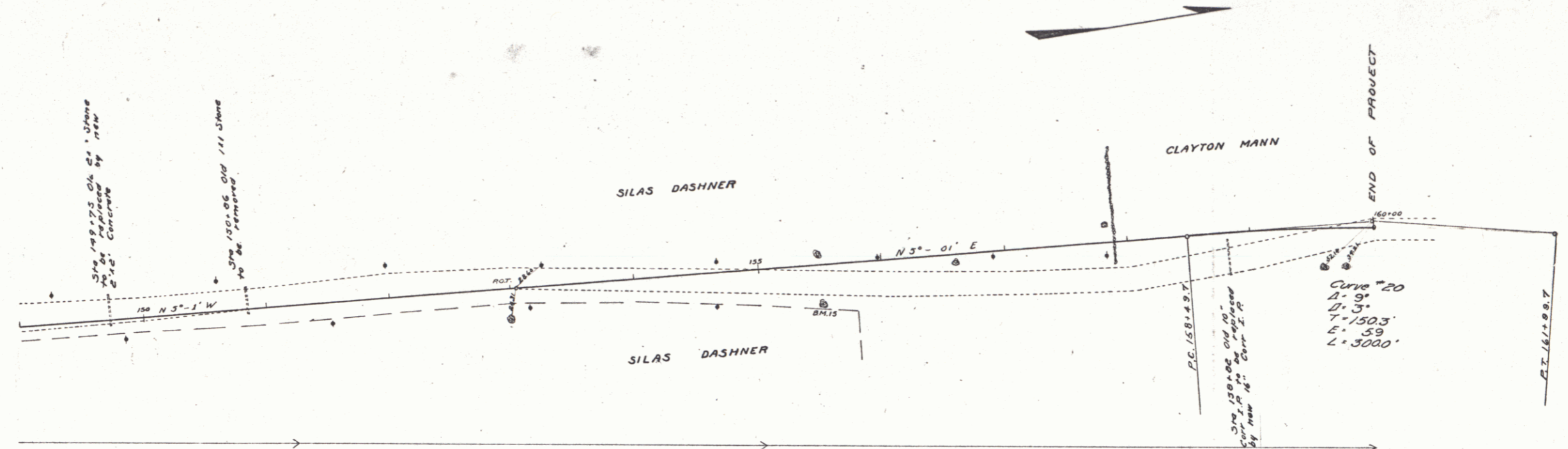
NEW CULVERTS REQUIRED
 Sta 149+75 2x2 Concrete 5.3 cu yds
 " 1-2-4 " " 7.3 " "
 " 1-2 1/2-5 " " " "
 Sta 150+02 16" Corr Iron 28 ft
 " 1-2 1/2-5 Conc. Headwalls 1.5 cu yds

Sub Base Required
 Sta 149+00 to Sta 156+50 length 750 ft

Proj. No.	Sheet No.	Proj. No.	Year	Total Sheets
9	VI	40	1921	13

W. E. Warner
 C. L. Field
 1921

W. E. Warner
 C. L. Field
 1921



B.M. 15 Spike in back side of Elm. Rt. of Sta. 155+50 Elev. 88.76

Series F No. 10 Piled
 Sheet 13 of 36