

**GUARD RAIL REQUIRED**

On Left

Sta 110+79 to Sta 111+03	Length 24 ft.	
112+93	113+17	24
113+75	114+15	40
119+57	120+21	64

On Right

Sta 110+79 to Sta 111+03	Length 24 ft.	
112+93	113+17	24
119+57	119+81	24

Total this sheet 224'

**NEW CULVERTS REQUIRED**

Sta 110+91	14" Corr Iron	32 ft.
	1-2 1/2-3 Conc. Headwalls	1 cu yd.
Sta 113+05	18" Corr Iron	8 ft.
	1-2 1/2-3 Conc. Headwalls	1.3 cu yds
Sta 119+69	24" Corr Iron	12 ft.
	1-2 1/2-3 Conc. Headwalls	1.5 cu yds

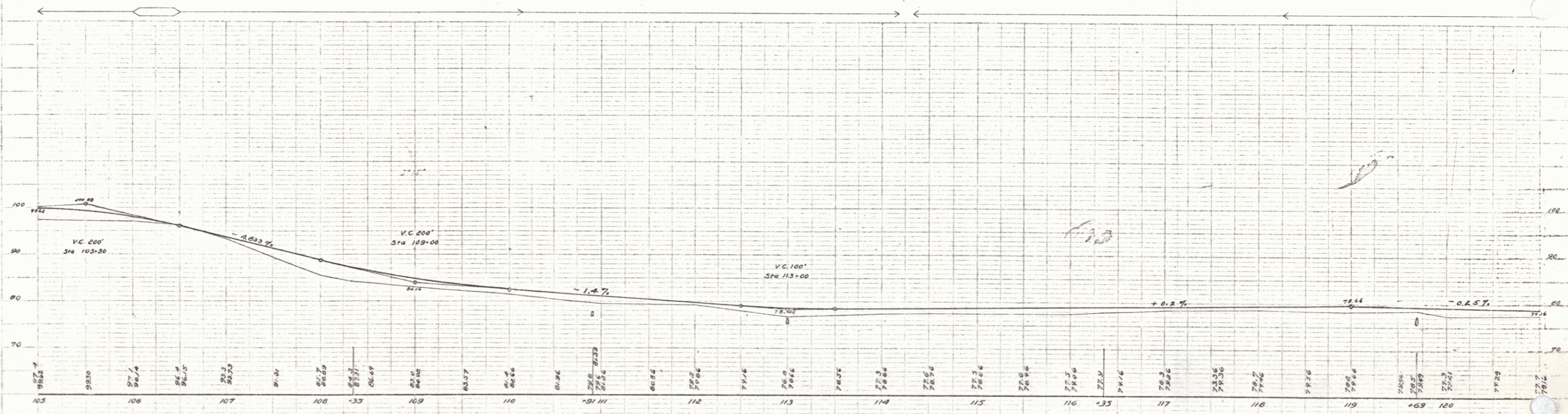
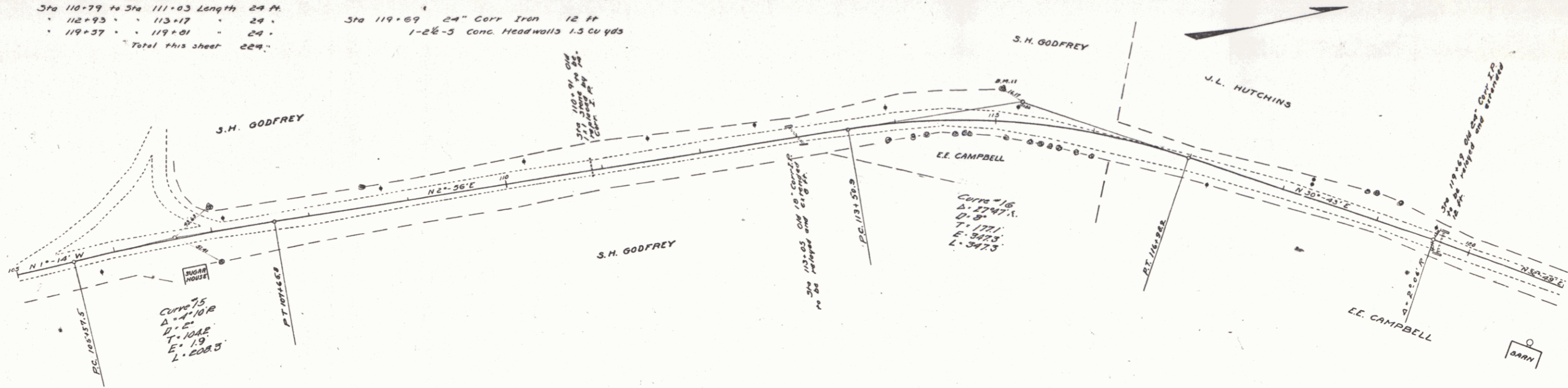
**RELAYING PIPE CULVERTS**

Sta 113+05	18" Corr Iron	28 ft.
Sta 119+69	24" Corr Iron	24 ft.

**SUBBASE REQUIRED**

Sta 103+00 to Sta 121+00	length 1800 ft.
--------------------------	-----------------

PER ROAD DIST. MI.	STATE	PER. AND DIS. CO.	DATE	TOTAL SHEETS
9	VI	+0	1923	10 36



B.M. "11 Spike in 8" Elm Left of Sta. 115+00 Elev. 79+33

Series P. No. Filed  
Sheet 10 of 36