

**GUARD RAIL REQUIRED**

Sta	Length	On Left	On Right
Sta 91+00 to Sta 91+02	02.00	02.00	02.00
91+50 - 92+70	120.00	120.00	120.00
94+50 - 97+06	256.00	256.00	256.00
101+36 - 102+24	88.00	88.00	88.00
103+60 - 103+92	32.00	32.00	32.00
Total this sheet 620 ft			

**NEW CULVERTS REQUIRED**

Sta	Material	Quantity
Sta 92+25	2x2 Concrete	37 cu yds
	1-2-4 "	7.5 "
	1-2 1/2-5 "	7.5 "
Sta 96+93.7	14" Corr. Iron	30'
	1-2 1/2-5 Conc. Headwalls	1.0 cu yds
Sta 101+50	2x2 Concrete	6.0 cu yds
	1-2-4 "	7.9 "
	1-2 1/2-5 "	7.9 "
Sta 103+00	2x2 Concrete	5.3 cu yds
	1-2-4 "	7.1 "
	1-2 1/2-5 "	7.1 "

**RELAYING PIPE CULVERTS**

Sta	Material	Quantity
Sta 95+05.0	12" Corr. Iron	36 ft
	Relayed from Sta 6+0.4	
	1-2 1/2-5 Conc. Headwalls	1 cu yd

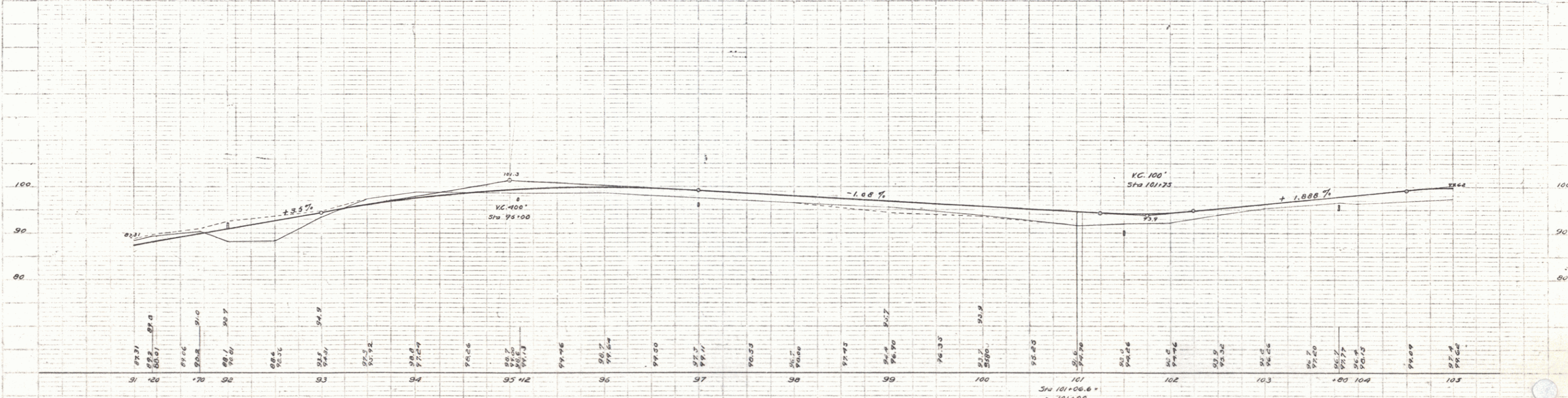
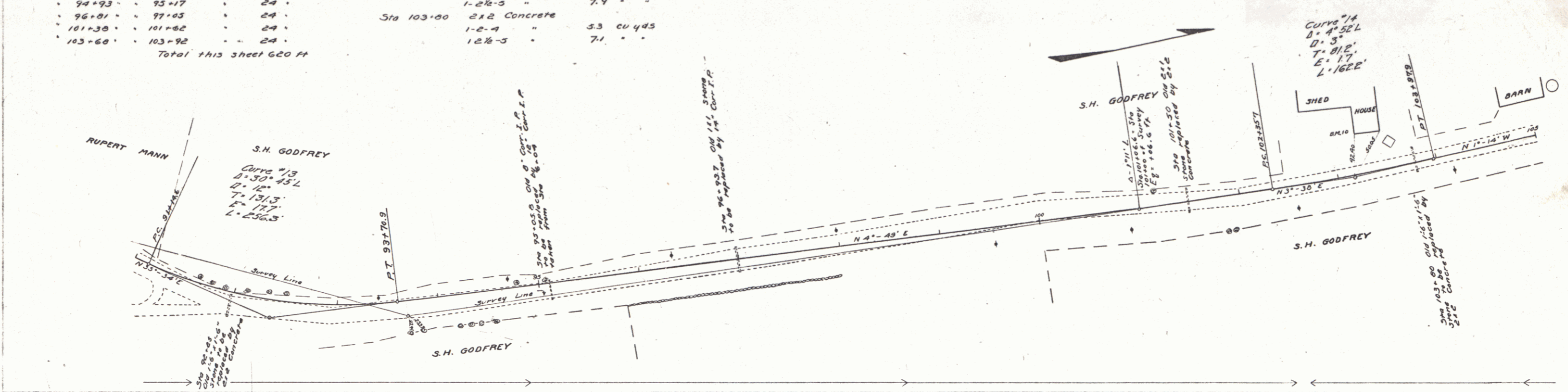
**SUBBASE REQUIRED**

Sta	Length
Sta 91+00 to Sta 103+00	1400 ft

PER. NO.	STATION	DATE	BY	TOTAL SHEETS
9	VI	40	1922	36

W.E. Hatcher  
G.L. Field  
C.E. Fisher

W.E. Hatcher  
G.L. Field  
C.E. Fisher



B.M. #10 Bottom S.E. corner board House Left of Sta. 103+17 Elev. 92.88

Sta 101+06.6 =  
101+00  
Elev. = 86.6'

Series F No. 38 Filed  
Sheet 9 of 36