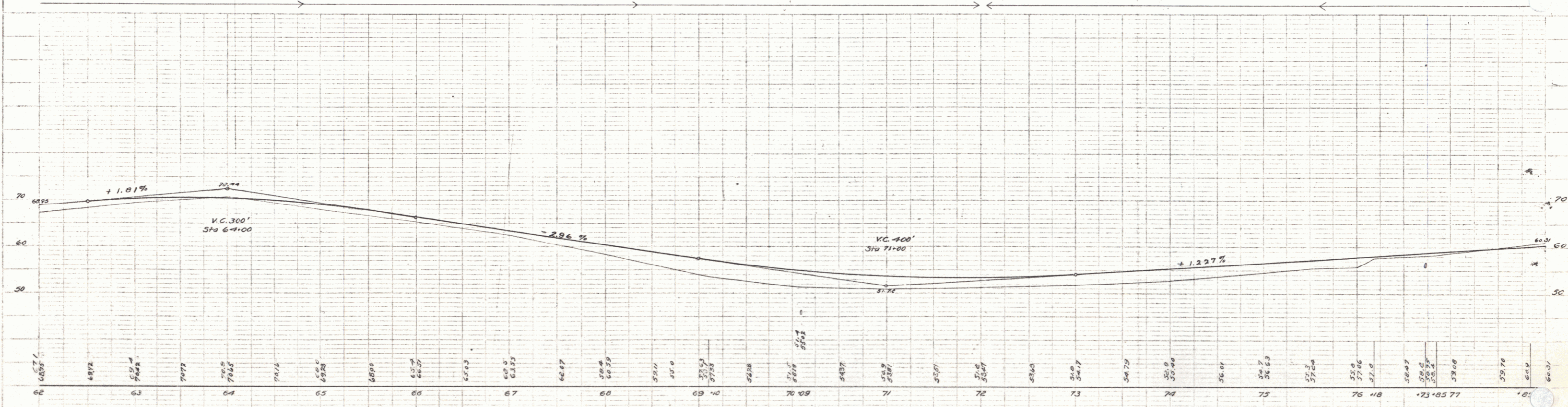
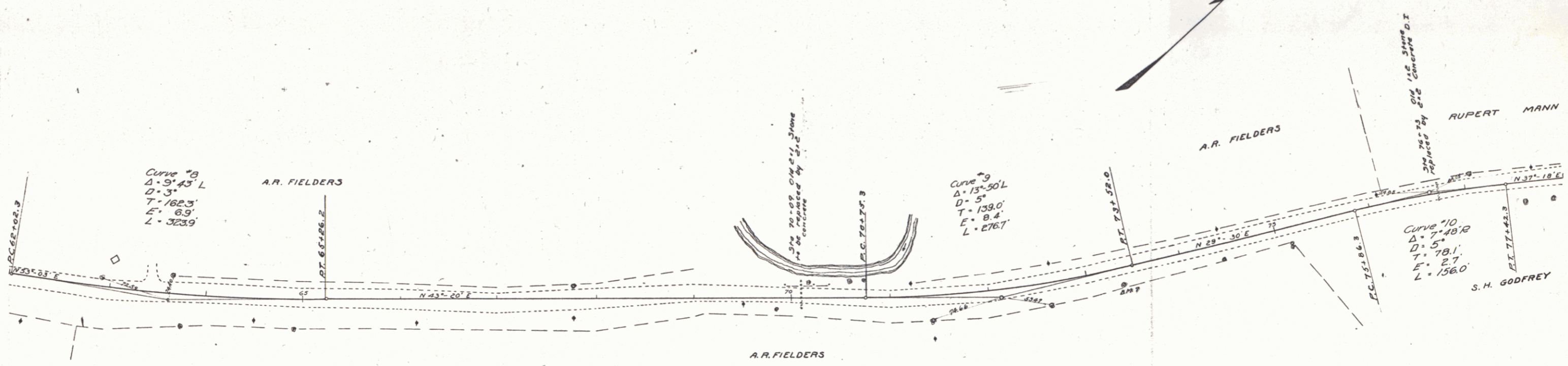


GUARD RAIL REQUIRED
 On Left
 Sta 62+00 to Sta 63+20 Length 120 ft.
 69+97 - 70+21 24'
 75-75 - 76+07 112'
 On Right
 Sta 69+97 to Sta 70+21 Length 24 ft.
 76+61 - 76+85 24'
 Total this sheet 312 ft.

NEW CULVERTS REQUIRED
 Sta 70+09 2x2 Concrete 7.3 cu yds
 1-2-4 Concrete 9.1 -
 1-2B-3 -
 Sta 76+73 2x2 Concrete D.I.
 1-2-4 Concrete 6.0 cu yds
 1-2B-3 - 7.9 -

SUBBASE REQUIRED
 Sta 62+50 to Sta 68+50 length 600 ft
 Sta 71+00 to Sta 78+00 length 700 ft

FED. ROAD DIST. NO.	STATE	FED. AID PROJ. NO.	FISCAL YEAR	SHEET NO.	TOTAL SHEETS
9	VT	40	1922	7	36



B.M. #7 Spike in 20' Elm Rt. of Sta. 73+36 Elev. 53.39

Series F. No. 40 Filed
 Dec 13 1922

W.C. Mather
 G.L. Miller
 G.A. Fisher
 Supt. of Highways
 State of Vermont

W.C. Mather
 G.L. Miller
 G.A. Fisher
 Supt. of Highways
 State of Vermont

6