

GUARD RAIL REQUIRED

| Location | Length |
|-------------------------|---------------|
| Sta 15+00 to Sta 16+12 | 24 ft |
| On Left | |
| Sta 24+63 to Sta 24+07 | 24 |
| Sta 29+30 to Sta 29+02 | 24 |
| On Right | |
| Sta 15+00 to Sta 16+12 | 24 ft |
| Sta 24+63 to Sta 24+07 | 24 |
| Sta 29+30 to Sta 29+02 | 24 |
| Total this sheet | 144 ft |

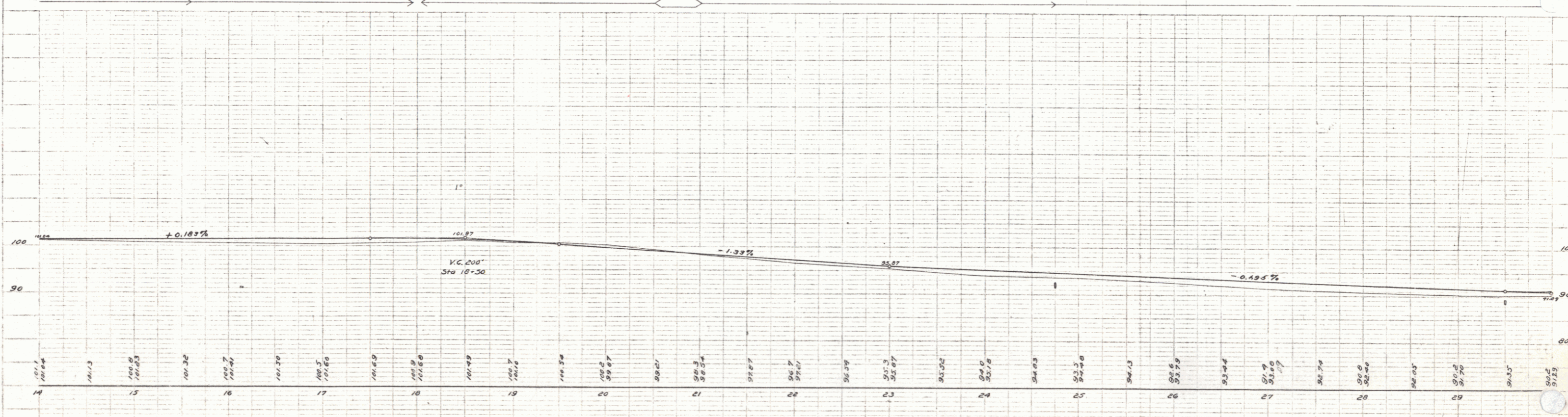
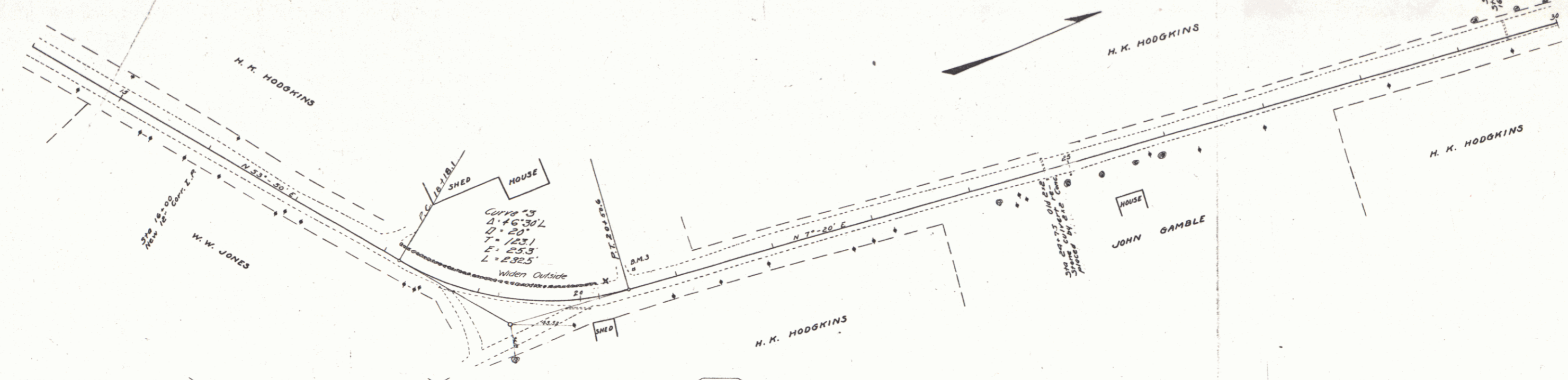
NEW CULVERTS REQUIRED

| | | |
|-----------|------------------------------|------------|
| Sta 16+00 | 12" Corr Iron | 26 ft |
| | 1-2% Conc. Headwalls | 1 cu yd |
| Sta 24+75 | 2x2 Concrete | |
| | 1-2-4 " | 5.3 cu yds |
| | 1-2 1/2-5 " | 7.1 cu yds |
| Sta 29+30 | 16" Corr Iron | 20 ft |
| | 1-2 1/2-5 Concrete Headwalls | 15 cu yds |

SUB BASE REQUIRED

| | |
|------------------------|----------------|
| Sta 20+00 to Sta 30+00 | length 1000 ft |
|------------------------|----------------|

| FED. ROAD DIST. NO. | STATE | FED. AID PROJ. NO. | SECTION | SHEET NO. | TOTAL SHEETS |
|---------------------|-------|--------------------|---------|-----------|--------------|
| 9 | VI | 40 | 1923 | 4 | 36 |



B.M. *3 N.E. corner Base of N. Gate post E. Entrance Left of Sta. 20+00 Elev. 100.14

Series F No 40 Filed Sheet 4 of 36