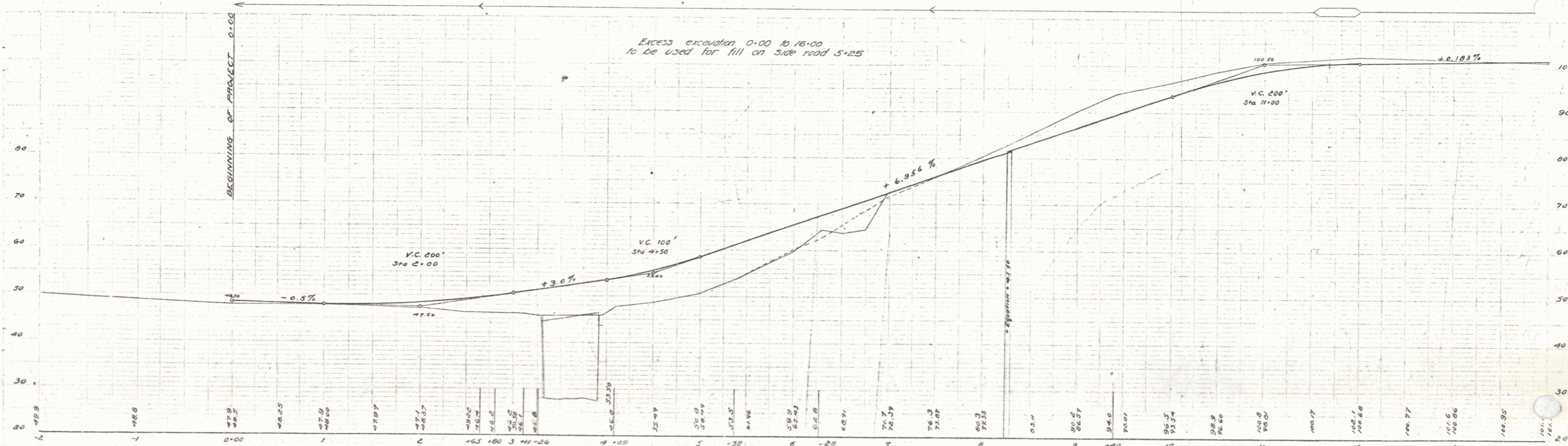
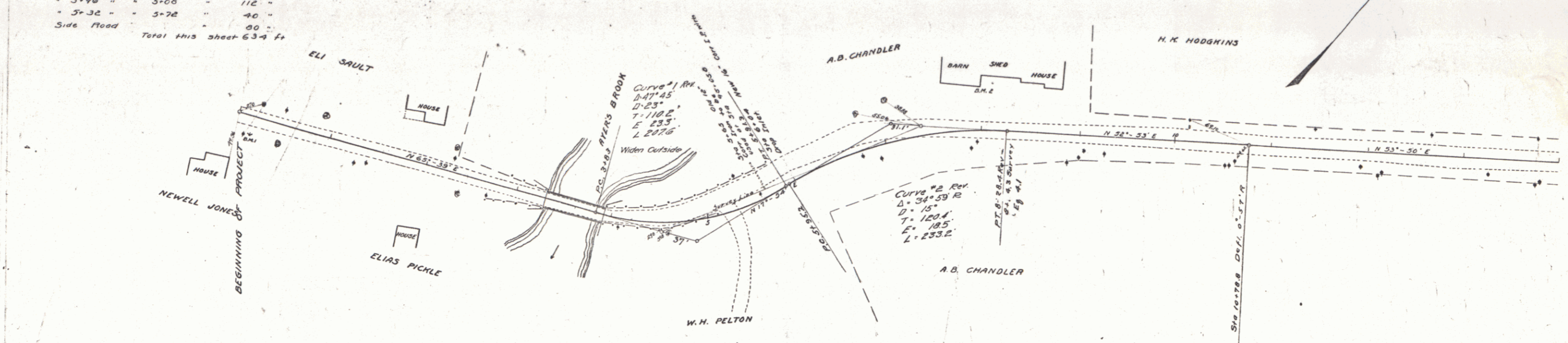


**GUARD RAIL REQUIRED**  
 On Left  
 Sta 2+54 to Sta 3+26 Length 72 feet  
 = 3+98 " " 6+32 " 236 "  
 On Right  
 Sta 2+54 to Sta 3+26 Length 72 feet  
 = 3+98 " " 3+00 " 112 "  
 = 3+32 " " 3+72 " 40 "  
 Side Road " " " 00 "  
 Total this sheet 634 ft

**NEW CULVERTS REQUIRED**  
 Sta 6+04 16" Corr I.P. Drop inlet 3+4 ft  
 1-24-3 Conc Headwalls 1.3 Cu yds

NO. ROAD DIST. NO.	STATE	YEAR	SCALE	SHEET NO.	TOTAL SHEETS
9	VT	40	1/2" = 1'	3	36



B.M. #1 Top of Hydrant Rtd of Sta 0+16 Elev. 30.00  
 B.M. #2 S.E. corner of Base Board of Barn Lot of Sta 7+96 Elev. 52.71

Series R No. 40 Filed  
 Sheet 3 of 36