

INDEX OF SHEETS

SHEET NO.	TITLE PAGE
" 2	TYPICAL CROSS-SECTION OF IMPROVEMENT
" 3	BANKING AND WIDENING TABLES
" 4-14	PLAN AND PROFILE SHEETS
" 15	STD. STRUCTURE SHEET 528 (PIPE CULVERTS)
" 16	" " " 529 (BOX CULVERTS)
" 17	" " " 530 (GUARD RAIL)
" 18	" " " 531 (BOUNDARY MARKERS)
" 19	" " " 531 (BOX CULVERTS)
" 20	" " " 540 (BARCADES SIGNS AND LIGHTS)
" 21-56	CROSS-SECTIONS

2 1/2" Gravel Mixed in Place Surface Course with Retaining Bar, 1800' x 18" x 4 1/2" or 2 1/2" Plant Mixed Gravel Surface Course with Cut-Back Asphalt and Tack Coat of Asphalt for Item 57 & 24H.

Standard sheets 528 and 529 approved by the Chief Engineer on July 11, 1933.

Standard sheet 530 approved by the Chief Engineer on Aug. 15, 1933.

Standard sheet 531 approved by the Chief Engineer on July 25, 1934.

STATE OF VERMONT
STATE HIGHWAY DEPARTMENT

PLAN AND PROFILE OF PROPOSED
STATE HIGHWAY

FEDERAL AID PROJECT

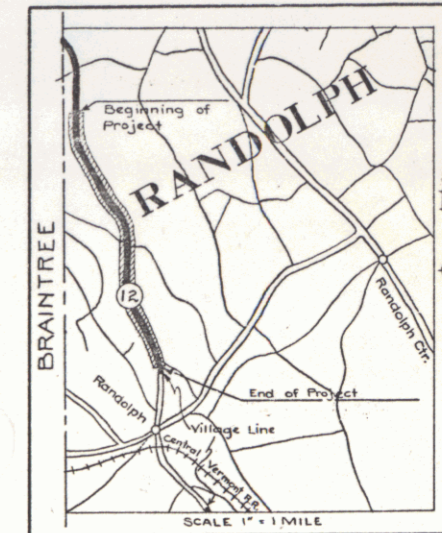
TOWN OF RANDOLPH

Pin # 99R 945

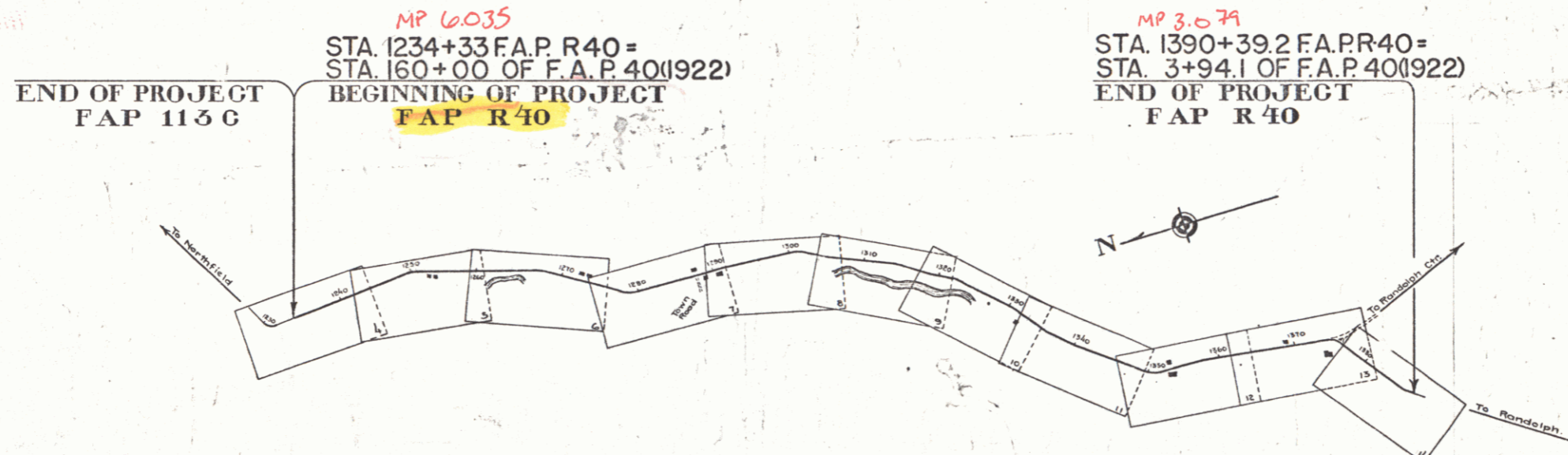
NORTHFIELD GULF ROAD

FROM A POINT 0.73 MILES SOUTH OF THE
BRAINTREE-RANDOLPH TOWN LINE SOUTHERLY
2.955 MILES.

LENGTH OF PROJECT 15,605.9 FT. = 2.955 MILES.



(To Be Returned to H.O.W. Division)
 TOWN OF RANDOLPH
 HIGHWAY DIVISION



Rte. VT 12

CONVENTIONAL SIGNS

COUNTY LINE	GROUND ELEVATION
TOWN LINE	RETAINING WALL
FENCE LINE	CENTER LINE
STONE WALL	SURVEY LINE
UNFENCED PROPERTY	CULVERT
GUARD RAIL	DROP INLET
TRAVELED WAY	TROLLEY POLE
RAILROAD	POWER POLE
RETAINING WALL	TELEPHONE POLE
CENTER LINE	TREES
SURVEY LINE	HEDGE

GROUND ELEVATION	BATHY LINE
GRADE ELEVATION	LINE

CURVE DATA

DEFLECTION ANGLE	Δ
DEGREE OF CURVE	D
RADIUS OF CURVE	R
TANGENT DISTANCE	T
LENGTH OF CURVE	L
EXTERNAL DISTANCE	E
POINT OF INTERSECTION	P.I.
POINT OF CURVE	P.C.
POINT OF TANGENT	P.T.
POINT ON TANGENT	P.O.T.

SCALES

Title	1" = 1000'
Typical	1/2" = 1'
Plan	1" = 50'
Profile	Hor. 1" = 10'
Vert.	1" = 5'
Cross-Sections	1" = 5'

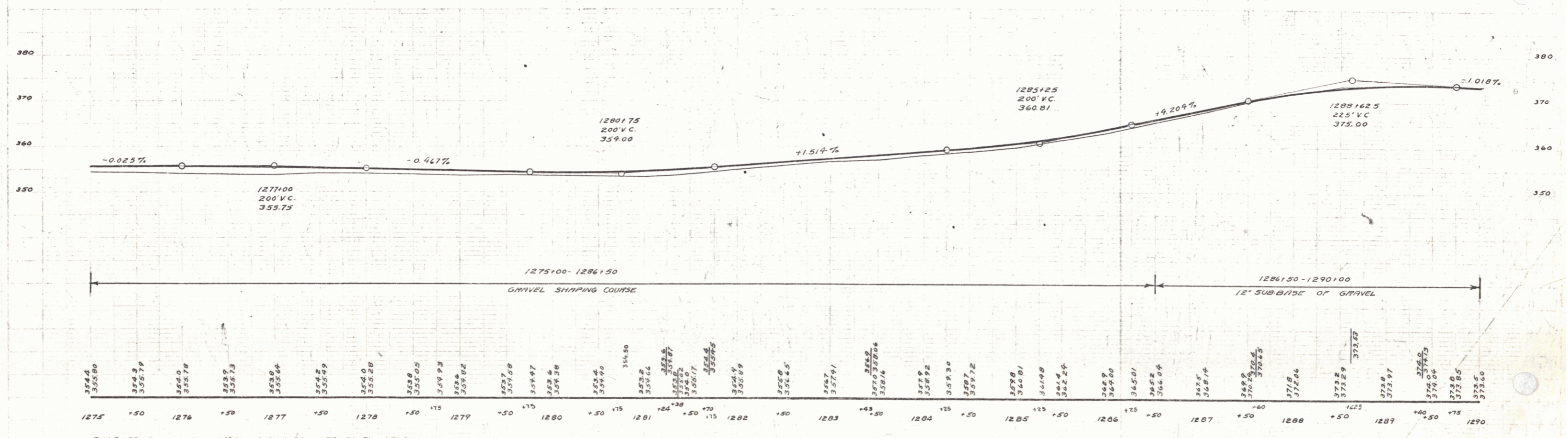
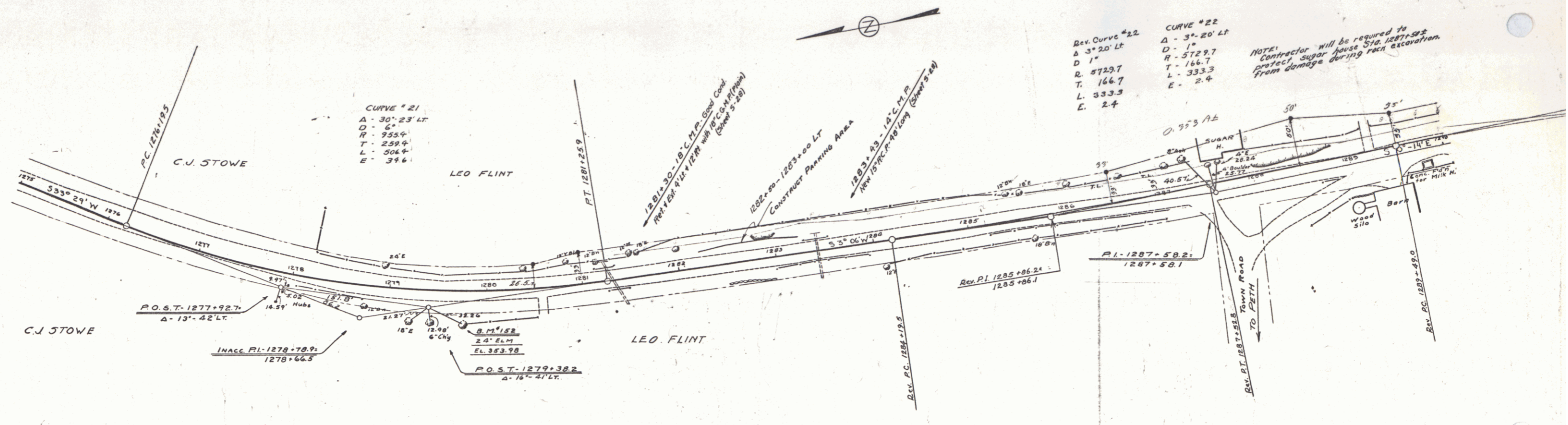
These plans are subject to such revisions as may be required by the Bureau of Public Roads and the Commissioner of Highways. Construction is to be carried out in accordance with the plans and standard road and bridge specifications of 1930 including all subsequent approved revisions, and such revised specifications and special provisions as are submitted with the plans.

APPROVED: April 3, 1935
 H. H. ...
 COMMISSIONER OF HIGHWAYS
 SUBMITTED BY ORDER OF THE STATE HIGHWAY BOARD

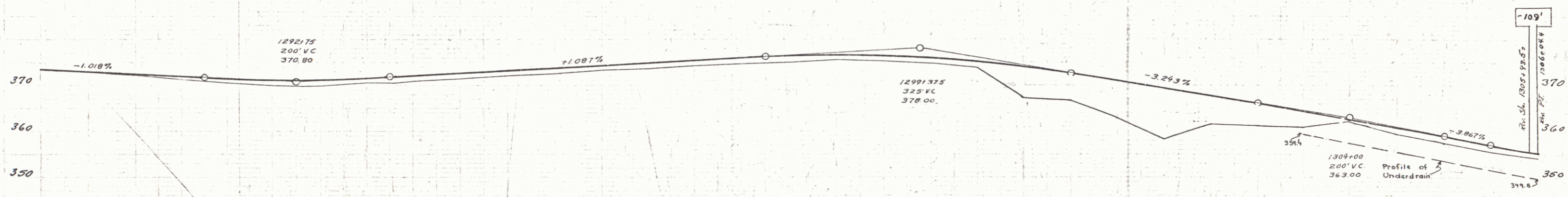
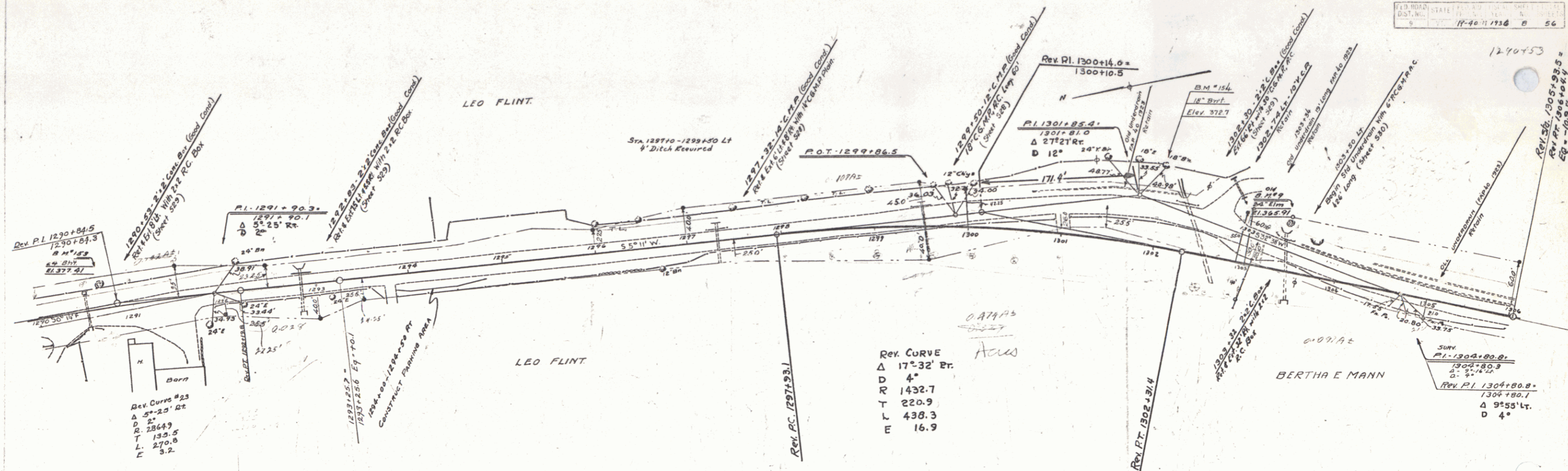
RECOMMENDED
 DISTRICT ENGINEER BUREAU OF PUBLIC ROADS
 RECOMMENDED FOR APPROVAL
 CHIEF ENGINEER BUREAU OF PUBLIC ROADS
 APPROVED
 DIRECTOR BUREAU OF PUBLIC ROADS

CORRECT April 3, 1935
 ROAD ENGINEER
 SERIES F. NO. 4945 FILED
 SHEET 1 OF 56

DIST. # 4 PLANS



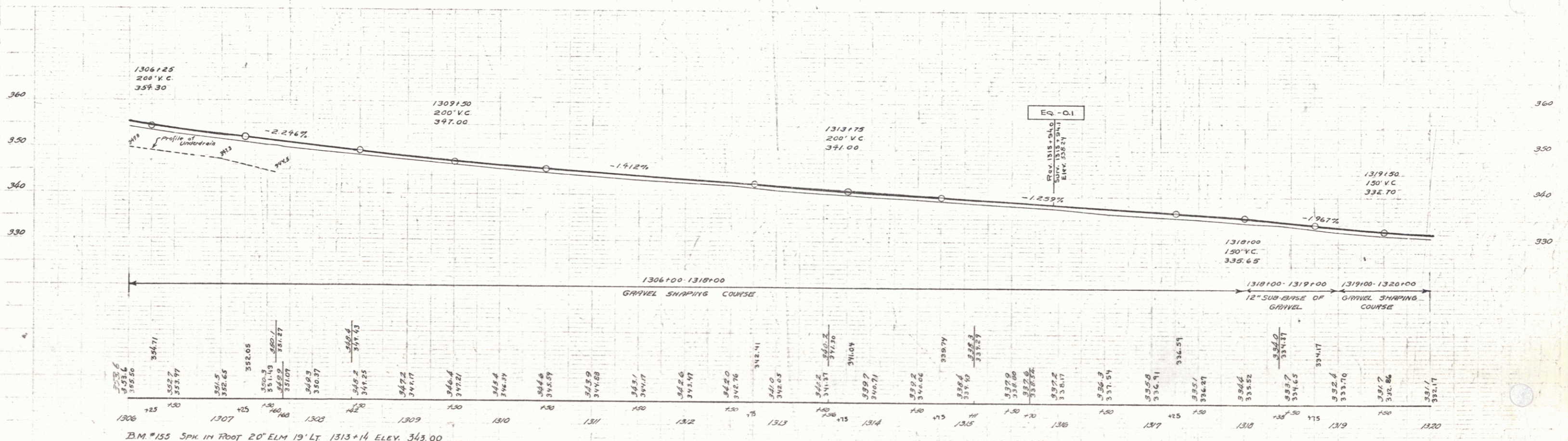
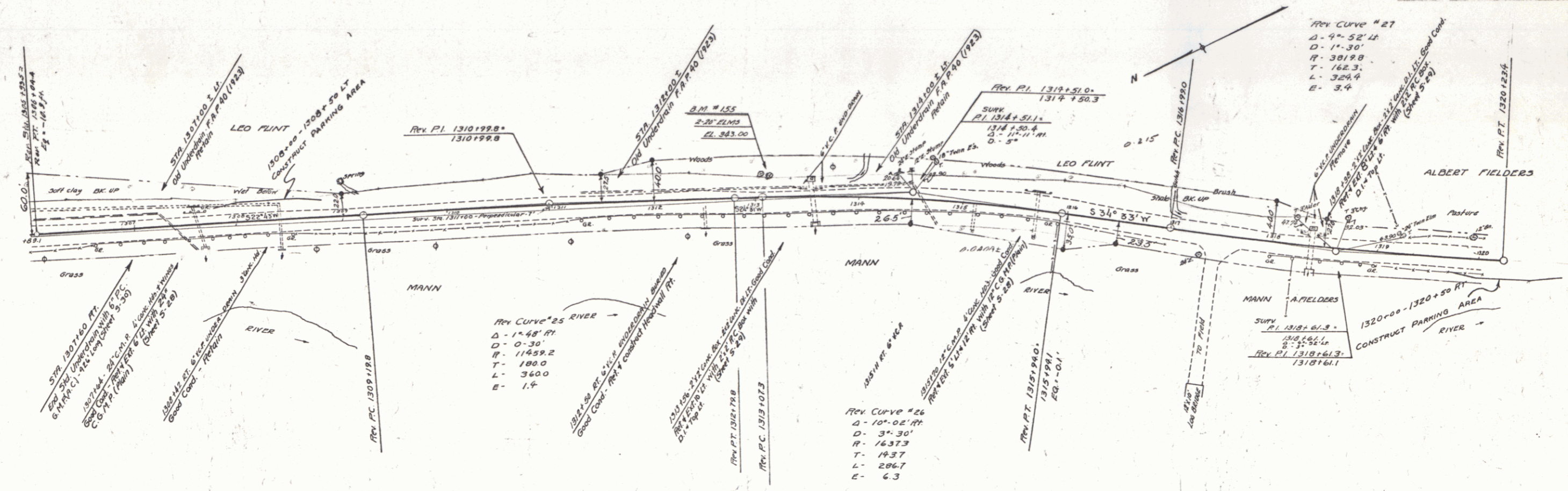
B.M. # 152 Spike in Root 24' Elm 31ft. Sta. 1279+76 Elev. 353.98



Station	Elevation	Station	Elevation	Station	Elevation	Station	Elevation
1290	375.0	1291	372.5	1292	370.8	1293	369.5
1291	374.2	1292	372.8	1293	371.5	1294	370.2
1292	373.8	1293	372.4	1294	371.1	1295	369.8
1293	373.4	1294	372.0	1295	370.7	1296	369.4
1294	373.0	1295	371.6	1296	370.5	1297	369.1
1295	372.6	1296	371.2	1297	370.1	1298	368.8
1296	372.2	1297	370.8	1298	369.7	1299	368.4
1297	371.8	1298	370.4	1299	369.3	1300	368.0
1298	371.4	1299	370.0	1300	368.9	1301	367.6
1299	371.0	1300	369.6	1301	368.5	1302	367.2
1300	370.6	1301	369.2	1302	368.1	1303	366.8
1301	370.2	1302	368.8	1303	367.7	1304	366.4
1302	369.8	1303	368.4	1304	367.3	1305	366.0
1303	369.4	1304	368.0	1305	366.9	1306	365.6
1304	369.0	1305	367.6				
1305	368.6	1306	367.2				
1306	368.2						

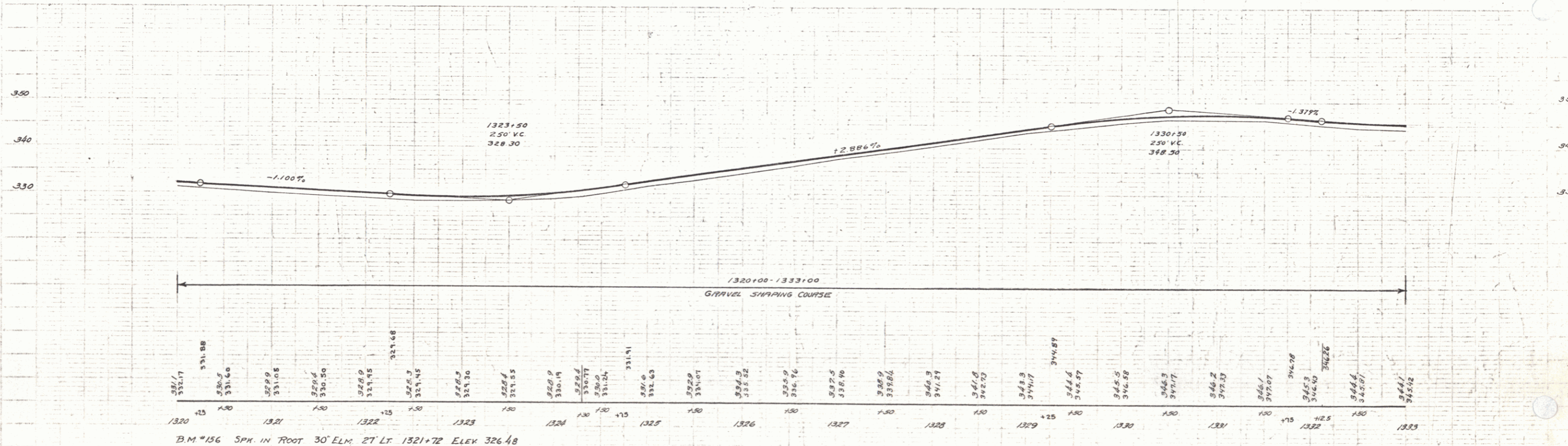
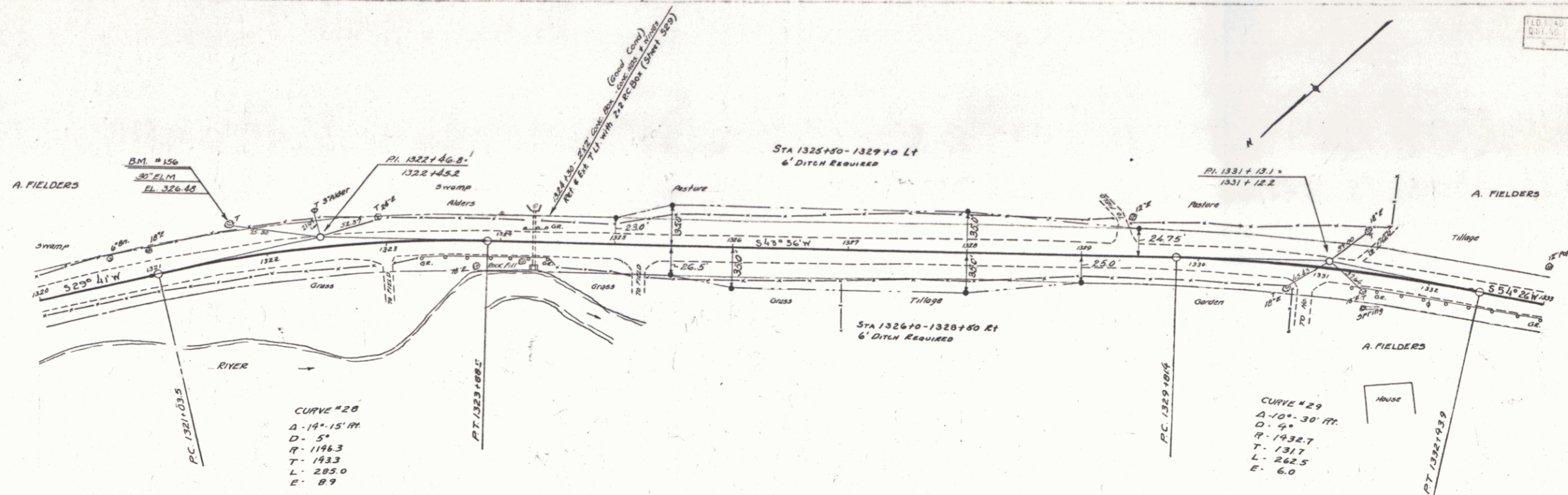
B.M. #153 SPM IN ROOT 24" B.M.T. 29' LT 1290 - 68 ELEV. 377.41
 B.M. #154 " " " " 18" B.M.T. 47' LT 1302 - 06 ELEV. 372.71
 B.M. #155 " " " " 24" ELM. 26' LT 1303 - 44 ELEV. 365.91

5

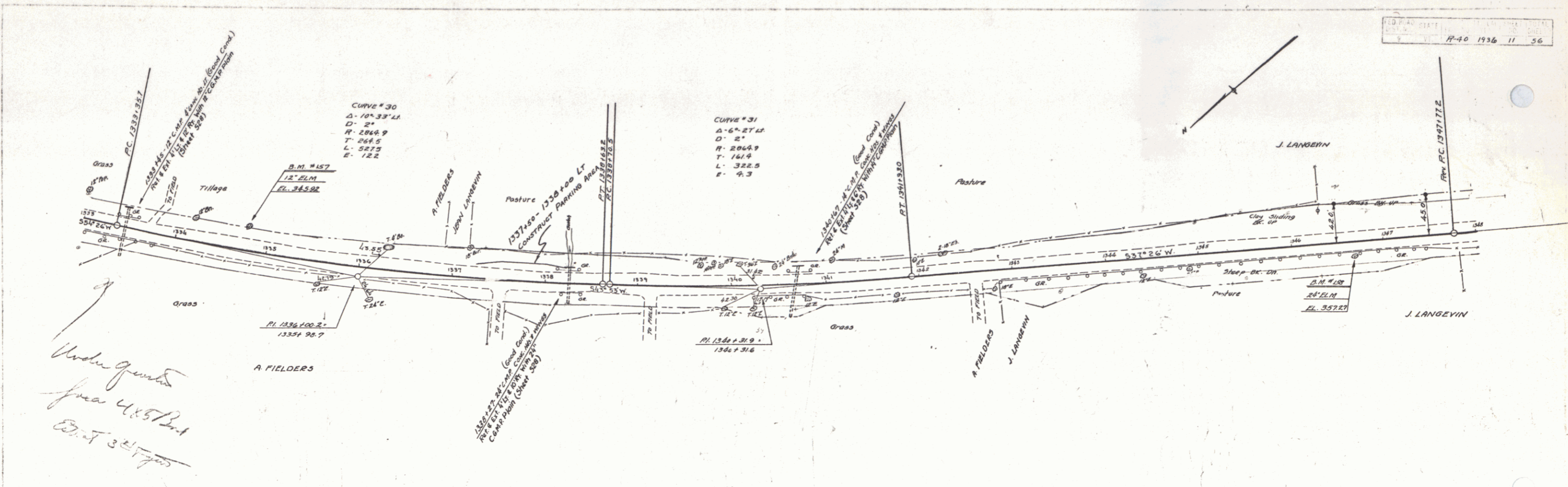


B.M. #155 SPK IN ROOT 20' ELM 19' LT 1313+14 ELEV. 343.00

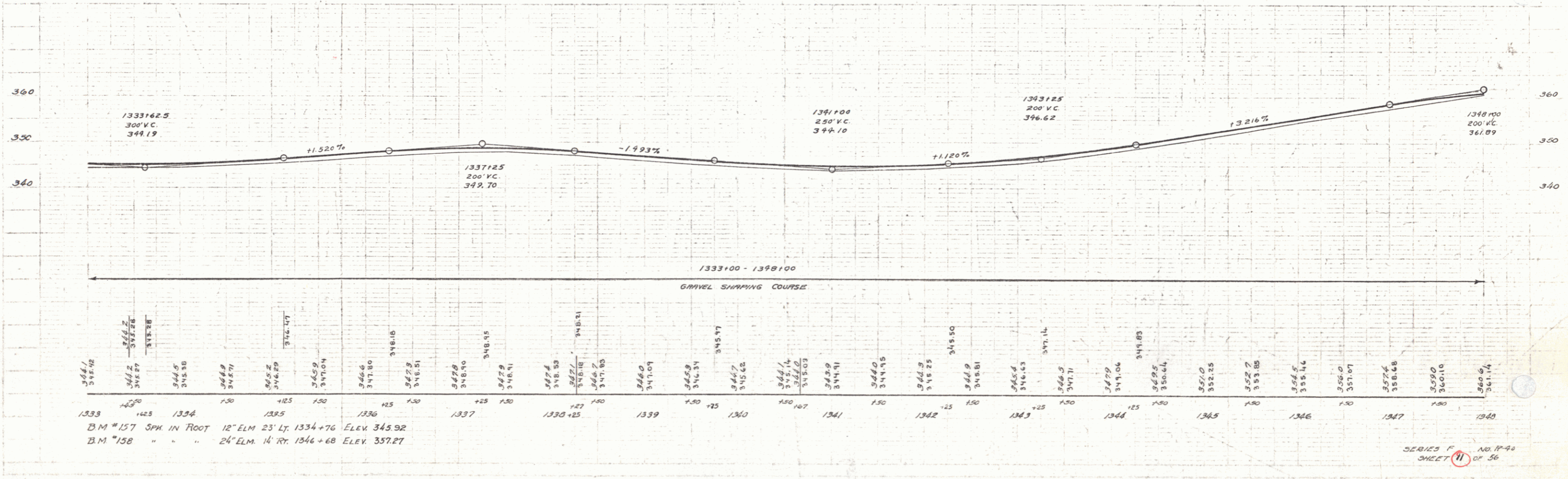
6



B.M. #156 SPK. IN ROOT 30' ELN. 27' LT. 1321+72 ELEV. 326.48

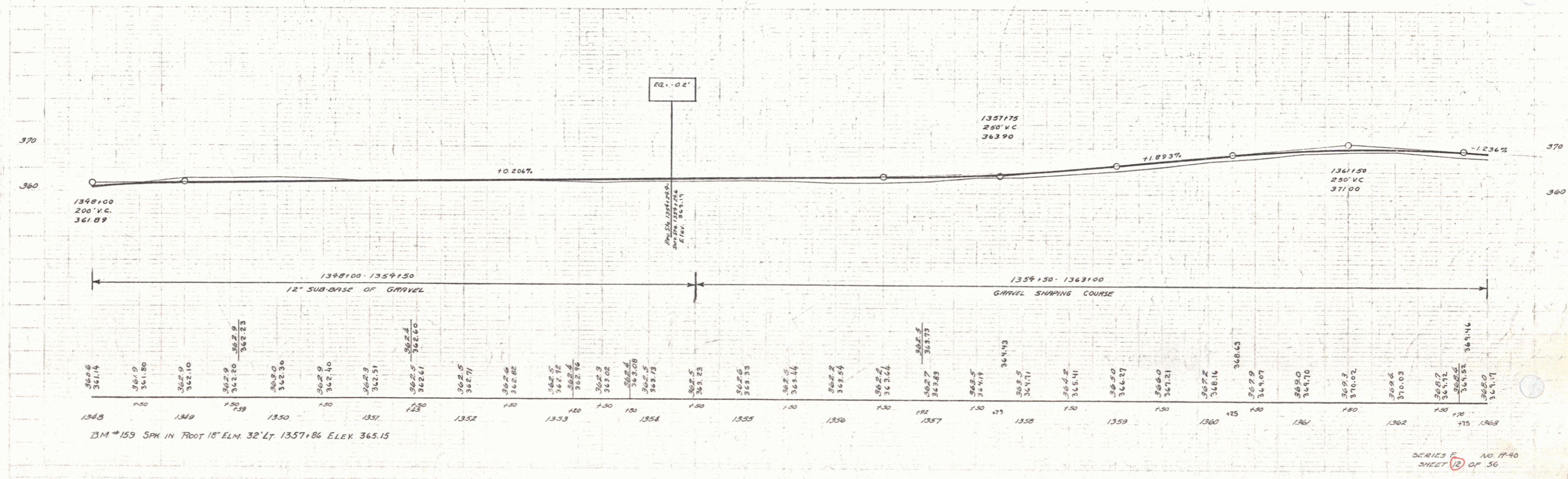
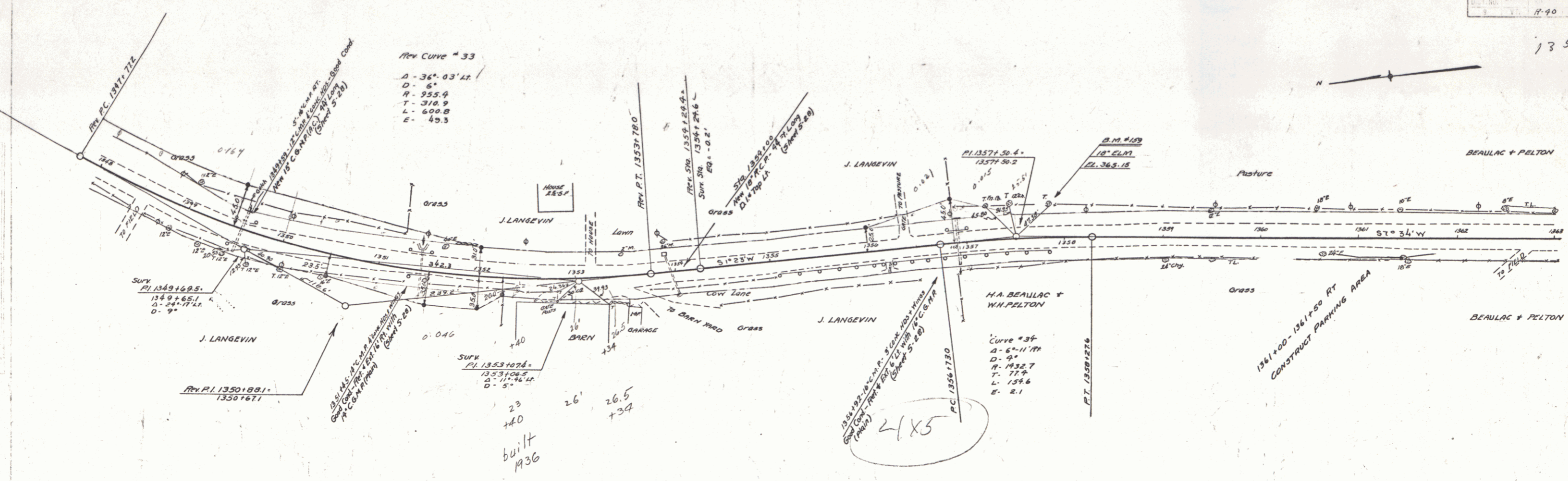


*Under ground
from 485' Post
Elev. 345.70*

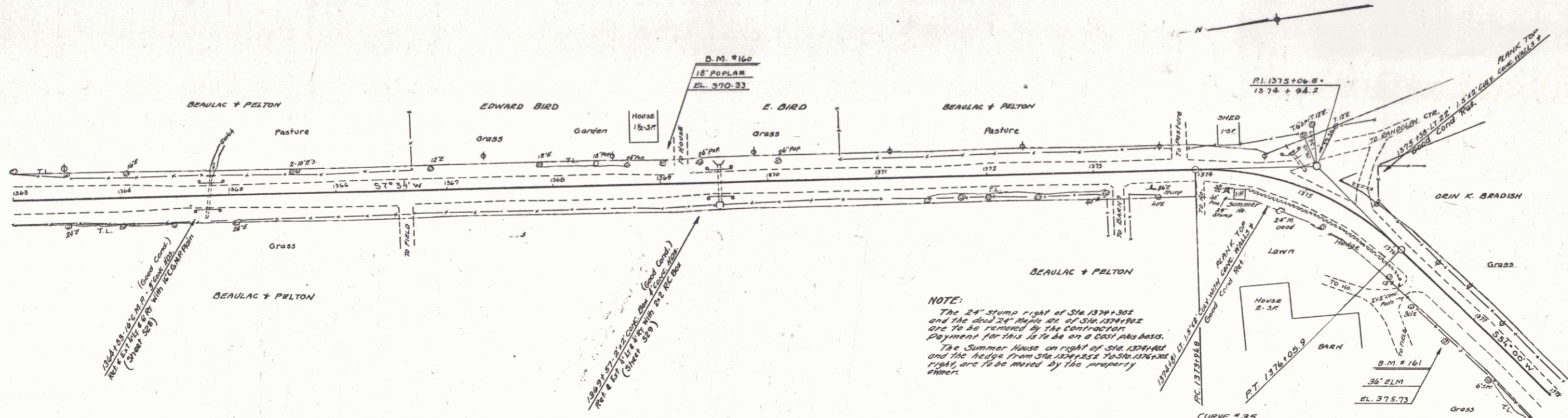


BM #157 5PK IN ROOT 12" ELM 25' LT. 1334+76 ELEV. 345.92
 BM #158 " " " 24" ELM. 14' RT. 1346+68 ELEV. 357.27

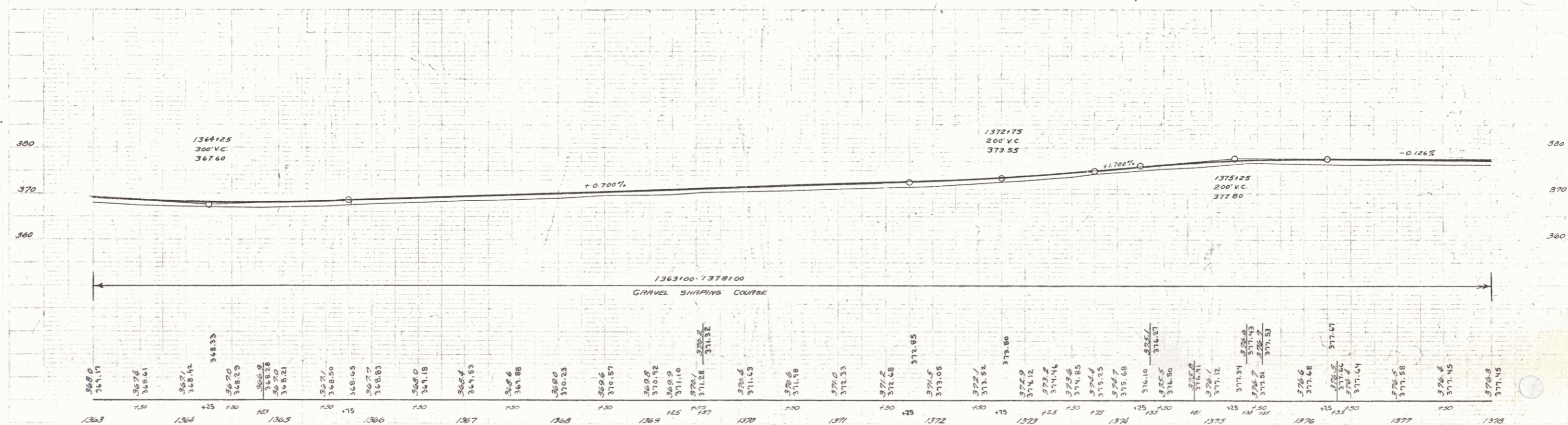
1354-92



9



NOTE:
 The 24" stump right of Sta 1374+302 and the dead 24" Maple at Sta 1374+102 are to be removed by the contractor. Payment for this to be on a cost plus basis.
 The Summer House on right of Sta 1374+102 and the Hedge from Sta 1374+155 to Sta 1374+175 are to be moved by the property owner.



B.M. #160 3PH. IN ROOT 18" Pop 17' Lt 1369+04 ELEV. 370.33
 B.M. #161 " " " 36" ELM. 31' Rt. 1376+95 ELEV. 375.73

10

