

INDEX OF SHEETS

SHEET NO.	TITLE PAGE
"	" 2 TYPICAL CROSS-SECTION OF IMPROVEMENT
"	" 3 BANKING AND WIDENING TABLES
" 14	PLAN AND PROFILE SHEETS
" 15	STD. STRUCTURE SHEET 528 (PIPE CULVERTS)
" 16	" " " 529 (BOX CULVERTS)
" 17	" " " 530 (GUARD RAIL)
" 18	" " " 531 (BOUNDARY MARKERS)
" 19	" " " 531 (BOX CULVERTS)
" 20	" " " 540 (BARCADES SIGNS AND LIGHTS)
" 21-56	CROSS-SECTIONS

*2 1/2" Gravel Mixed in Place Surface Course with Retaining Bar, 1800' x 18" x 4 1/2" or 2 1/2" Plant Mixed Gravel Surface Course with Cut-Back Asphalt and Tack Coat of Asphalt for Item 57 & 24H.*

Standard sheets 528 and 529 approved by the Chief Engineer on July 11, 1933.

Standard sheet 530 approved by the Chief Engineer on Aug. 15, 1933.

Standard sheet 531 approved by the Chief Engineer on July 25, 1934.

(To Be Returned to H.O.W. Division)  
 APPROVED  
 TOWN ENGINEER  
 HIGHWAY DIVISION

STATE OF VERMONT  
STATE HIGHWAY DEPARTMENT

PLAN AND PROFILE OF PROPOSED  
STATE HIGHWAY

FEDERAL AID PROJECT

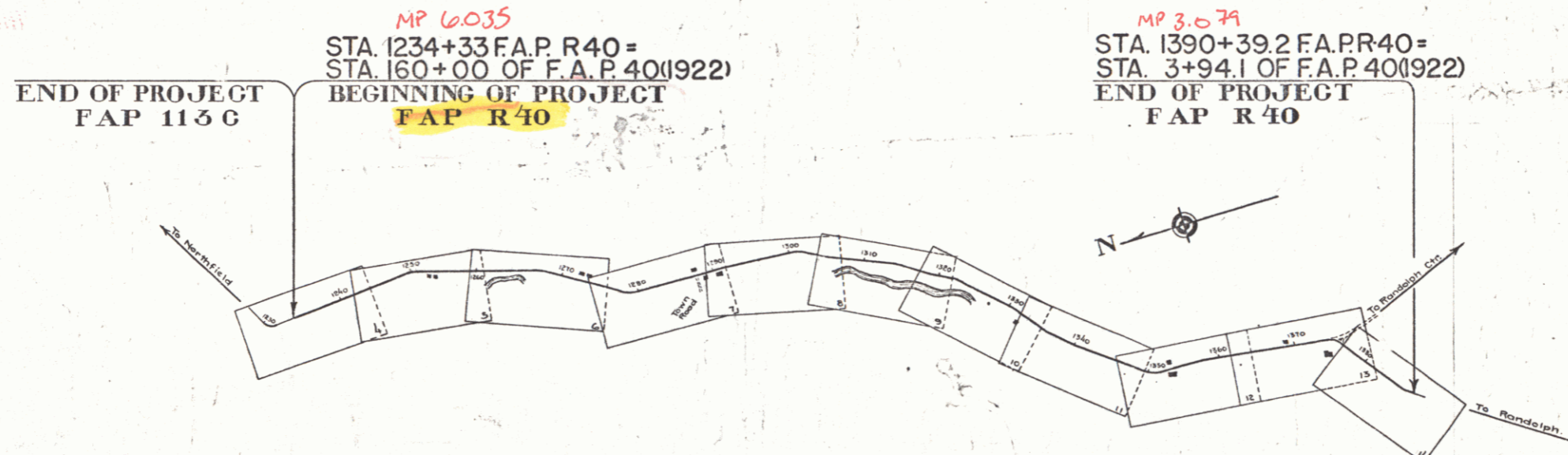
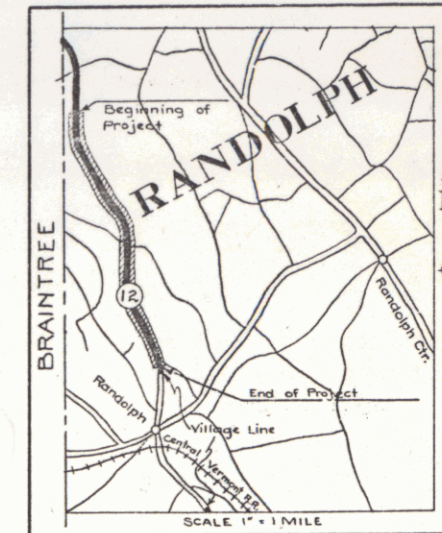
TOWN OF RANDOLPH

Pin # 99R 945

NORTHFIELD GULF ROAD

FROM A POINT 0.73 MILES SOUTH OF THE  
BRAINTREE-RANDOLPH TOWN LINE SOUTHERLY  
2.955 MILES.

LENGTH OF PROJECT 15,605.9 FT. = 2.955 MILES.



Rte. VT 12

CONVENTIONAL SIGNS

COUNTY LINE	-----
TOWN LINE	-----
FENCE LINE	-----
STONE WALL	-----
UNFENCED PROPERTY	-----
GUARD RAIL	-----
TRAVELED WAY	-----
RAILROAD	-----
RETAINING WALL	-----
CENTER LINE	-----
SURVEY LINE	-----
CULVERT	-----
DROP INLET	-----
TROLLEY POLE	-----
POWER POLE	-----
TELEPHONE POLE	-----
TREES	-----
HEDGE	-----

GROUND ELEVATION	BATHY	LINE
GRADE ELEVATION	BATHY	LINE

CURVE DATA

DEFLECTION ANGLE	..... Δ
DEGREE OF CURVE	..... D
RADIUS OF CURVE	..... R
TANGENT DISTANCE	..... T
LENGTH OF CURVE	..... L
EXTERNAL DISTANCE	..... E
POINT OF INTERSECTION	..... P.I.
POINT OF CURVE	..... P.C.
POINT OF TANGENT	..... P.T.
POINT ON TANGENT	..... P.O.T.

SCALES

Title	1" = 1000'
Typical	1/2" = 1'
Plan	1" = 50'
Profile	Hor. 1" = 50'
	Vert. 1" = 10'
Cross-Sections	1" = 5'

These plans are subject to such revisions as may be required by the Bureau of Public Roads and the Commissioner of Highways. Construction is to be carried out in accordance with the plans and standard road and bridge specifications of 1930 including all subsequent approved revisions, and such revised specifications and special provisions as are submitted with the plans.

APPROVED: April 3, 1935  
*H. H. ...*  
 COMMISSIONER OF HIGHWAYS  
 SUBMITTED BY ORDER OF THE STATE HIGHWAY BOARD

RECOMMENDED  
 DISTRICT ENGINEER BUREAU OF PUBLIC ROADS  
 RECOMMENDED FOR APPROVAL  
 CHIEF ENGINEER BUREAU OF PUBLIC ROADS  
 APPROVED  
 DIRECTOR BUREAU OF PUBLIC ROADS

CORRECT April 3, 1935  
 ROAD ENGINEER  
 SERIES F. NO. 4945 FILED  
 SHEET 1 OF 56

DIST. # 4 PLANS