

INDEX OF SHEETS

SHEET NO. 1	TITLE PAGE
" 2	TYPICAL CROSS-SECTION OF IMPROVEMENT 24' GRAVEL
" 3	PLAN AND PROFILE STA. 0+50 TO 6+00
" 4	PLAN AND PROFILE STA. 6+00 TO 10+00
" 5	S.T.B. 20'-40' SQUARE WITH GRAVEL
" 6	S.A.R. 10' SQUARE
" 7-8-9-10	CROSS SECTIONS
" 11	PLAN AND PROFILE STA. 1+90 TO 2+35
" 12	S.C.I. 8x5 15' SKEW 62' BARREL (3' FILL)
" 13-14	CROSS SECTIONS
" 15	PLAN AND PROFILE STA. 2+00 TO 5+00
" 16	S.L.B. 20' S.R. 20' SPAN 15' SKEW WITH GRAVEL
" 17	S.A.R. 20' SQUARE
" 18	S.A.R. 20' 15' SKEW
" 19-20-21-22	CROSS SECTIONS
" 23	S.B.2 TYPICAL DETAILS
" 24	S.B.4 SOLID RAIL
" 25	S.19 STANDARD STRUCTURES

FED. ROAD DIST. NO.	STATE	FUND. YEAR	PROJECT NO.	SHEET NO.	TOTAL SHEETS
9	VT.	12 D	1925	1	25

STATE OF VERMONT
STATE HIGHWAY DEPARTMENT

PLAN AND PROFILE OF PROPOSED
STATE HIGHWAY
FEDERAL AID PROJECT

Pin# 990939

TOWNS OF RANDOLPH-BETHEL

RANDOLPH-BETHEL ROAD

BRIDGE OVER CAMP BROOK **BR 34** MP 3.842-4.022
LOCATED 3.3 MILES SOUTH OF BETHEL-RANDOLPH LINE
LENGTH 950 FEET = 0.180 MILES



SCALE 1" = 4 MILES

BR 33 MP 3.412-3.420
BRIDGE LOCATED 4.0 MILES SOUTH OF BETHEL-RANDOLPH LINE
LENGTH 45 FEET = .009 MILES

BETHEL

BR 40 M.P.S. 4.28-5.372
BEANVILLE BRIDGE OVER BEANVILLE BROOK
LOCATED 18 MILES SOUTH OF RANDOLPH VILLAGE ON ROUTE 12
LENGTH 300 FEET = 0.056 MILES

RANDOLPH

RIGHT-OF-WAY DIVISION
TOWN FILE
PERPETUAL
Town of Utz
(To Be Returned To R.O.W. Division)

CONVENTIONAL SIGNS

COUNTY LINE	GROUND ELEVATION	DATUM	LINE
TOWN LINE	GRADE ELEVATION	DATUM	LINE
FENCE LINE			
STONE WALL			
UNFENCED PROPERTY			
GUARD RAIL			
TRAVELED WAY			
RAILROAD			
RETAINING WALL			
CENTER LINE			
SURVEY LINE			
CULVERT			
DROP INLET			
TROLLEY POLE			
POWER POLE			
TELEPHONE POLE			
TREES			
HEDGE			

CURVE DATA

DEFLECTION ANGLE	Δ
DEGREE OF CURVE	D
RADIUS OF CURVE	R
TANGENT DISTANCE	T
LENGTH OF CURVE	L
EXTERNAL DISTANCE	E
POINT OF INTERSECTION	P. I.
POINT OF CURVE	P. C.
POINT OF TANGENT	P. T.
POINT ON TANGENT	P. O. T.

LAYOUT
SEE SHEET 3

SCALES
PLAN 1" = 20 FT
VERT 1" = 20 FT
PROF 1" = 20 FT
SECTIONS 1" = 5 FT

THIS PROJECT TO BE CONSTRUCTED IN ACCORDANCE WITH
STANDARD SPECIFICATIONS ON FILE WITH THE U.S. BUREAU
OF PUBLIC ROADS. APPROVED 7/1/26

STRUCTURES ON THIS PROJECT TO BE CONSTRUCTED IN
ACCORDANCE WITH DETAILS GIVEN ON STANDARD STRUCTURE
SHEETS. SERIES Nos. 517-18-19

DISTRICT NO. 5-7
BRIDGE NO. 25-11
RANDOLPH-BETHEL

APPROVED: 6/22/26
H. E. Sargent
CHIEF ENGINEER

SUBMITTED BY ORDER OF THE STATE HIGHWAY BOARD
W. B. Bates
COMMISSIONER OF HIGHWAYS

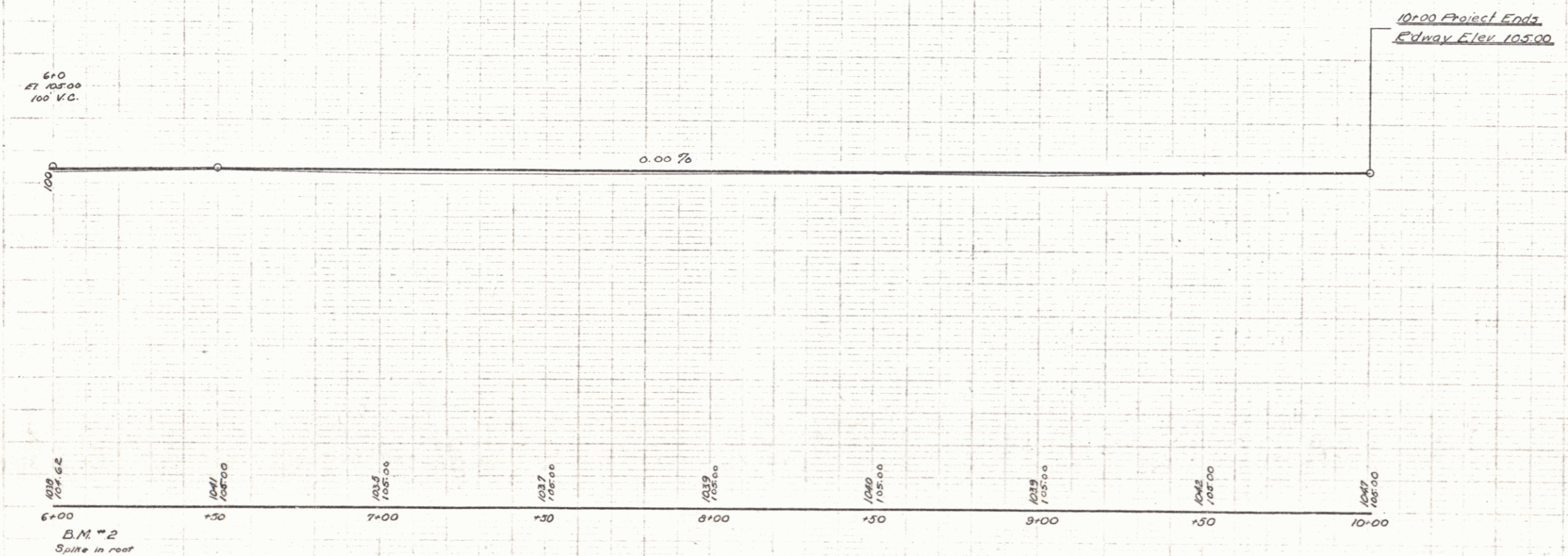
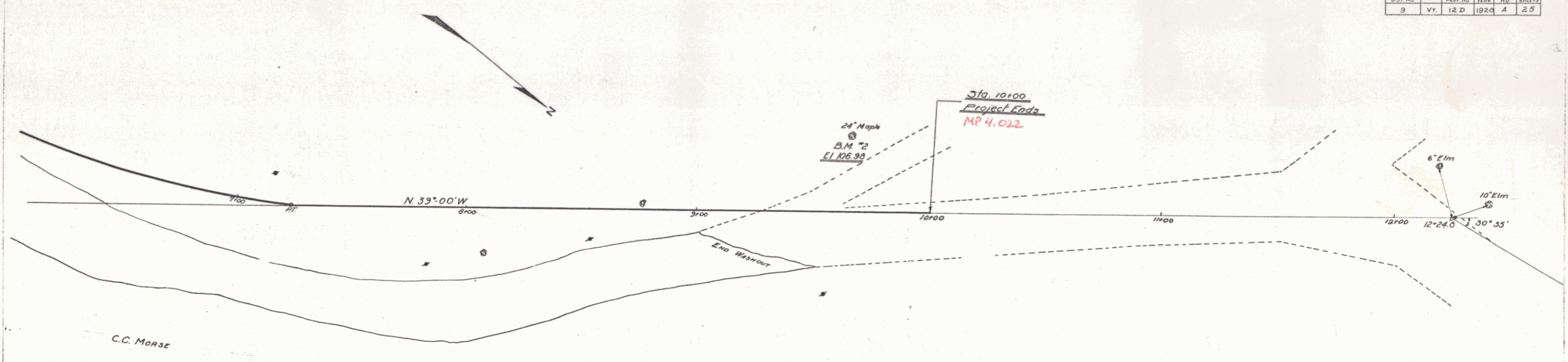
RECOMMENDED
DISTRICT ENGINEER BUREAU OF PUBLIC ROADS
RECOMMENDED FOR APPROVAL
CHIEF ENGINEER BUREAU OF PUBLIC ROADS
APPROVED
DIRECTOR - BUREAU OF PUBLIC ROADS

Project No. **F 12D**

SERIES F. No. 12D FILED
SHEET 1 OF 25

DIST. # 4 PLANS

FED. ROAD DIST. NO.	STATE	PROJECT	PLAN	SHEET NO.	TOTAL SHEETS
9	Vt.	12 D	1920	4	25



BETHEL
BRIDGE No. 25-28
DISTRICT No. 5

SHEET 4 OF 25 SHEETS

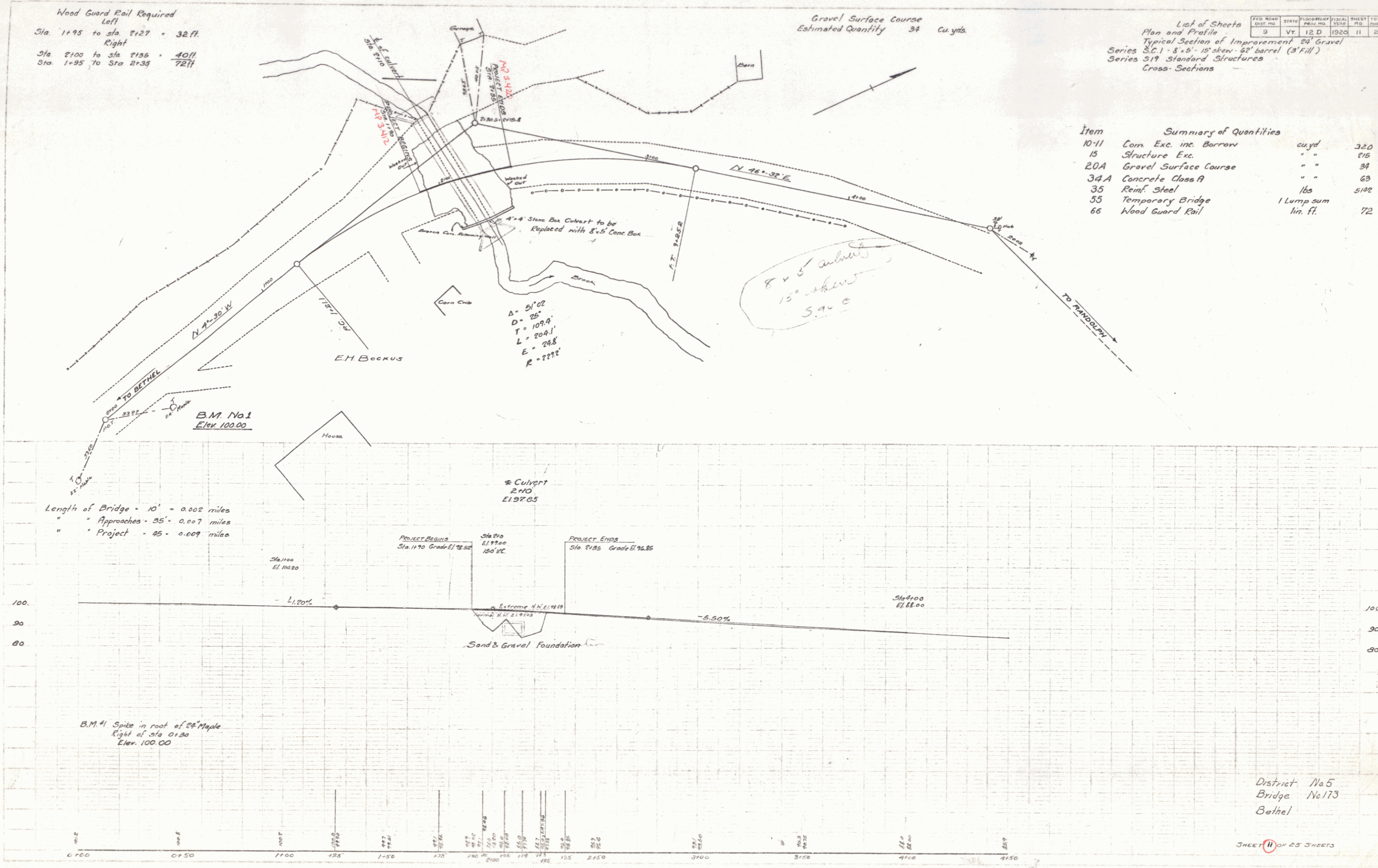
Wood Guard Rail Required
 Left
 Sta. 1195 to Sta. 2127 = 32 ft.
 Right
 Sta. 2100 to Sta. 2135 = 40 ft.
 Sta. 1+95 to Sta. 2+35 = 72 ft.

Gravel Surface Course
 Estimated Quantity 34 cu. yds.

List of Sheets
 Plan and Profile
 Typical Section of Improvement 20' Gravel
 Series S.C.1 - 8' x 5' - 15' skew - 62' barrel (3' Fill)
 Series S19 - Standard Structures
 Cross-Sections

FOUR ROAD DIST. NO.	STATE	PROJECT NO.	SHEET NO.	TOTAL SHEETS
3	VT	12 D	11	25

Item	Summary of Quantities	cu. yd.	lin. ft.
10-11	Conc. Exc. inc. Borrow	32.0	
15	Structure Exc.	216	
20A	Gravel Surface Course	34	
34A	Concrete Class A	63	
35	Reinf. Steel	5182	
35	Temporary Bridge	1 Lump sum	
66	Wood Guard Rail	72	



Length of Bridge - 10' = 0.002 miles
 " Approaches - 35' = 0.007 miles
 " Project - 45' = 0.009 miles

2x10 Culvert
 2x10
 E197.05

PROJECT BEGINS
 Sta. 1170 Grade E198.50
 Sta. 210 Grade E198.50

Extreme H.W. 1918
 21.913

Sand & Gravel Foundation

B.M. #1 Spike in root of Maple
 Right of Sta. 0+30
 Elev. 100.00

District No. 5
 Bridge No. 173
 Bethel

SHEET 11 OF 25 SHEETS

FED. ROAD DIST. NO.	STATE	FLOOD RELIEF PROJ. NO.	FISCAL YEAR	SHEET NO.	TOTAL SHEETS
9	VT	12 D	1926	18	25

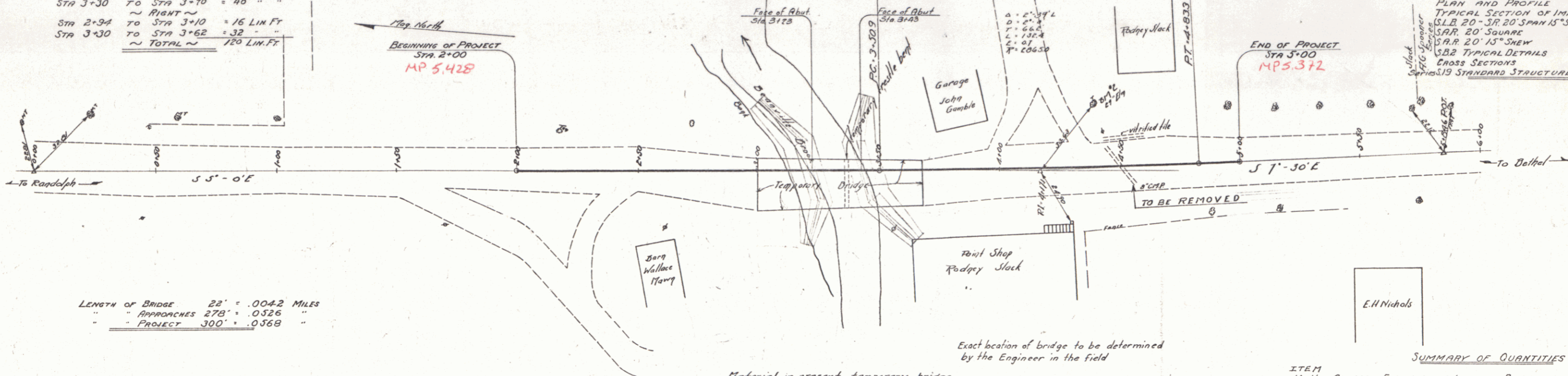
WOOD GUARD RAIL REQUIRED

~ LEFT ~
 STA 2+78 TO STA 3+10 = 32 LIN. FT.
 STA 3+30 TO STA 3+70 = 40 " "
 ~ RIGHT ~
 STA 2+94 TO STA 3+10 = 16 LIN. FT.
 STA 3+30 TO STA 3+62 = 32 " "
 ~ TOTAL ~ 120 LIN. FT.

GRAVEL SURFACE COURSE REQUIRED
 ESTIMATED QUANTITY 175 CU YDS

SHEETS TO BE USED

PLAN AND PROFILE
 TYPICAL SECTION OF IMPROVEMENT
 S.L.B. 20 - 3R 20' SPAN 15" SKEW WITH CURB
 S.A.R. 20' 15" SKEW
 S.B.2 TYPICAL DETAILS
 CROSS SECTIONS
 S.A.S.19 STANDARD STRUCTURES



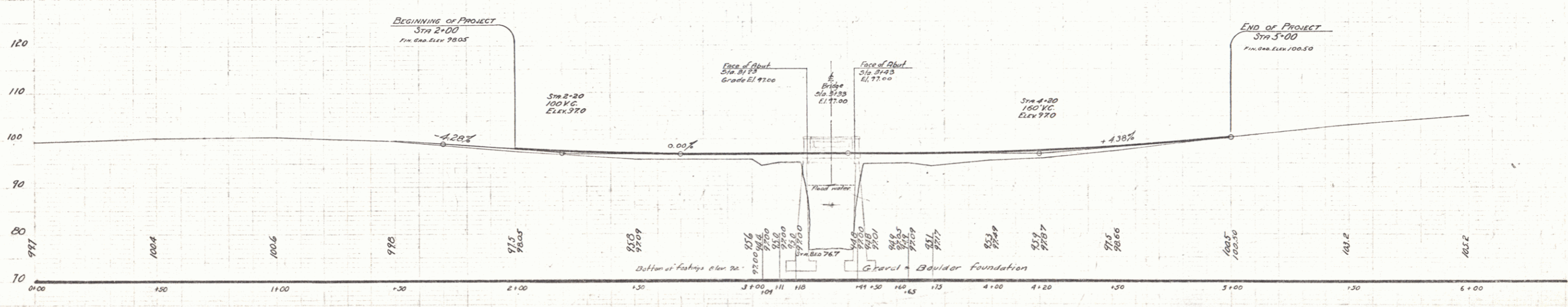
LENGTH OF BRIDGE 22' = .0042 MILES
 " " APPROACHES 278' = .0526 " "
 " " PROJECT 300' = .0568 "

Exact location of bridge to be determined by the Engineer in the field

Material in present temporary bridge to become the property of the contractor and to be removed by him.

SUMMARY OF QUANTITIES

ITEM	DESCRIPTION	QUANTITY	UNIT
10-11	COMMON EXCAVATION INCLUDING BORROW	325	CU YDS
15	STRUCTURE EXCAVATION	225	" "
20A	GRAVEL SURFACE COURSE	175	" "
34A	CONCRETE CLASS A (1-2-4)	43	" "
34B	CONCRETE CLASS B (1-2-5)	388	" "
35	REINFORCING STEEL	32,065	LBS.
5-5	TEMPORARY BRIDGE	1	LAMP SUR.
6-6	WOOD GUARD RAIL	120	LIN. FT.



31.7' to the Maple on left - Elev. 100.00
 24' Elev. Sta. to 29.425' 93.11

DISTRICT NO. 7
 BRIDGE NO. 97
 RANDOLPH
 Scale - 1" = 100' 0"