

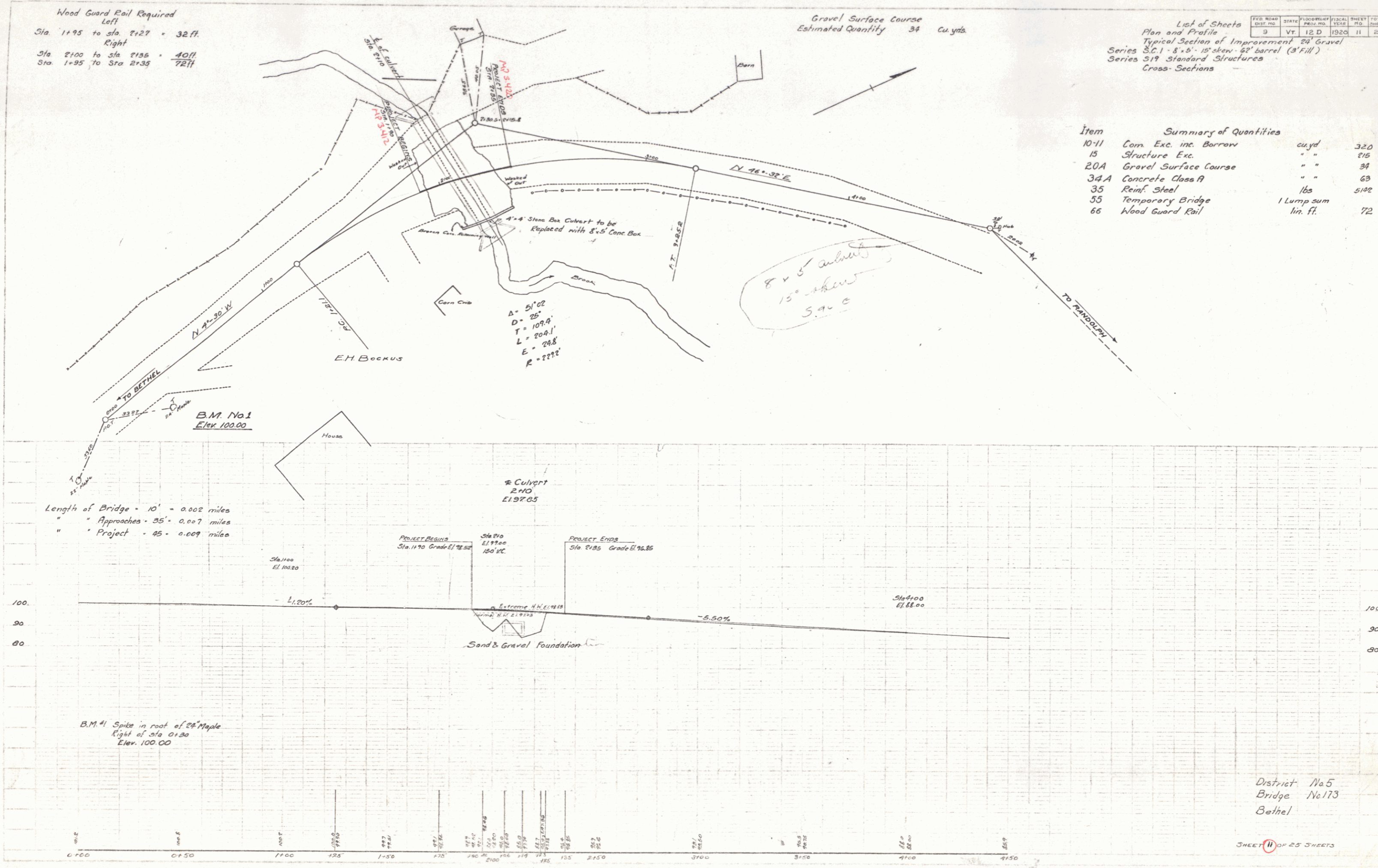
Wood Guard Rail Required
 Left
 Sta. 1+95 to Sta. 2+27 = 32 ft.
 Right
 Sta. 2+00 to Sta. 2+35 = 35 ft.
 Sta. 1+95 to Sta. 2+35 = 72 ft.

Gravel Surface Course
 Estimated Quantity 34 cu. yds.

List of Sheets
 Plan and Profile
 Typical Section of Improvement 20' Gravel
 Series S.C.1 - 8' x 5' - 15' skew - 62' barrel (3' fill)
 Series S19 - Standard Structures
 Cross-Sections

| FOUR ROAD DIST. NO. | STATE | PROJECT NO. | SHEET NO. | TOTAL SHEETS |
|---------------------|-------|-------------|-----------|--------------|
| 3 | VT | 12 D | 11 | 25 |

| Item | Summary of Quantities | cu. yd. | lin. ft. |
|-------|-----------------------|------------|----------|
| 10-11 | Con. Exc. inc. Borrow | 32.0 | |
| 15 | Structure Exc. | 216 | |
| 20A | Gravel Surface Course | 34 | |
| 34A | Concrete Class A | 63 | |
| 35 | Reinf. Steel | 5182 | |
| 35 | Temporary Bridge | 1 Lump sum | |
| 66 | Wood Guard Rail | 72 | |



8' x 5' culvert
 15° skew
 S.C.1

$\Delta = 51'02"$
 $D = 25'$
 $T = 109.9'$
 $L = 204.1'$
 $E = 248'$
 $R = 2222'$

Length of Bridge - 10' = 0.002 miles
 " Approaches - 35' = 0.007 miles
 " Project - 45' = 0.009 miles

B.M. #1 Spike in root of Maple
 Right of Sta. 0+30
 Elev. 100.00

District No. 5
 Bridge No. 173
 Bethel