

C. & R. TREE  
ITEM 110

Three Cable Guard Rail / Steel Posts

Sta 801+50 - 809+34

Construct Drives

Sta 810+28  
Sta 811+50

Construct Approach  
Sta 810+0 Lt

Construct Drives  
Sta 811+25 Rt  
Sta 811+75 Rt  
Sta 812+25 Rt

# 72 B  
FLORENCE E. & CLARENCE A. SHARPE  
Sta. 804+00-810+27  
1.03 ACRES ±  
W.D. 11/1/54  
RECORDED BETHEL-BK 40-PG 542-5/20/55

Sta 805+60 to 809+62 Lt  
Limits of Clearing & Grubbing  
Item 104

Surv. P.I. 806+27.9  
806+26.7

Sta 805+81 to 808+89 Lt  
New 6" x 30" Precast Drop Inlet Cover

corn house  
Construct Drive

Δ = 83°-56'  
D = 19'-00'  
R = 302.9  
T = 272.5  
L = 443.8  
E = 104.5

Sta. 802+10 Rt. to Sta. 809+50 Rt.  
Channel Excavation  
Item 106A

Sta. 801+75 Rt. to Sta. 809+50 Rt.  
Limits of Stone Fill for Slope Protection  
Item 521-C

Sta. 803+46 to 805+90 Rt.  
Limits of Clearing & Grubbing  
Item 104

Δ = 12°-22' Rt.  
D = 9'-0"  
R = 1432.7  
T = 155.2  
L = 309.2  
E = 8.4  
Bank 3/4" per ft

FRANK M. B.  
B.M. # 72  
S.I.R. 30" Maple  
El. 591.51

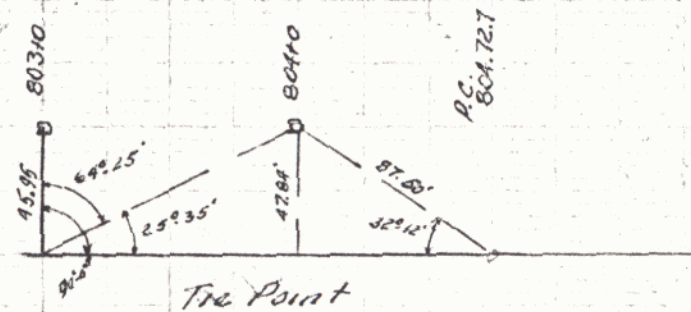
MARY M. ARNOLD  
P.I. 5+00.0  
3+98.8  
P.I. 810+65.2  
810+64.5

STA. 812+00  
END PROJECT F142(2)

Δ = 7°-43'  
D = 1'-30"  
R = 3819.8  
T = 257.6  
L = 514.5  
E = 87  
No Bank

Sta 809+50 Rt.  
Stone Fill for Slope Protection

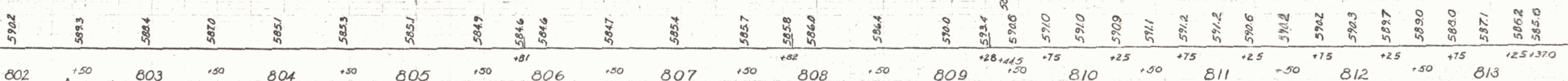
# 73 B  
GLENN M. & ANNA L. BULLARD  
Sta. 808+40-809+50  
0.17 ACRE ±  
W.D.O.E. 5/17/57  
RECORDED BETHEL-BK 41-PG 223-5/22/57



802+25  
150 V.C.  
591.40

808+0  
200 V.C.  
594.64  
N.P.S.D. = 356

811+25  
250 V.C.  
593.45  
N.P.S.D. = 350



B.M. # 72 S.I.R. 30" Maple 43' Rt. of 809+97 El. 591.51  
B.M. # 71.8 S.I.R. 12" Pine 35' Lt. of 804+04 El. 587.00

BARNARD-BETHEL

THE CLARKSON ENGINEERING CO., INC.  
CONSULTING ENGINEERS  
BOSTON MASSACHUSETTS