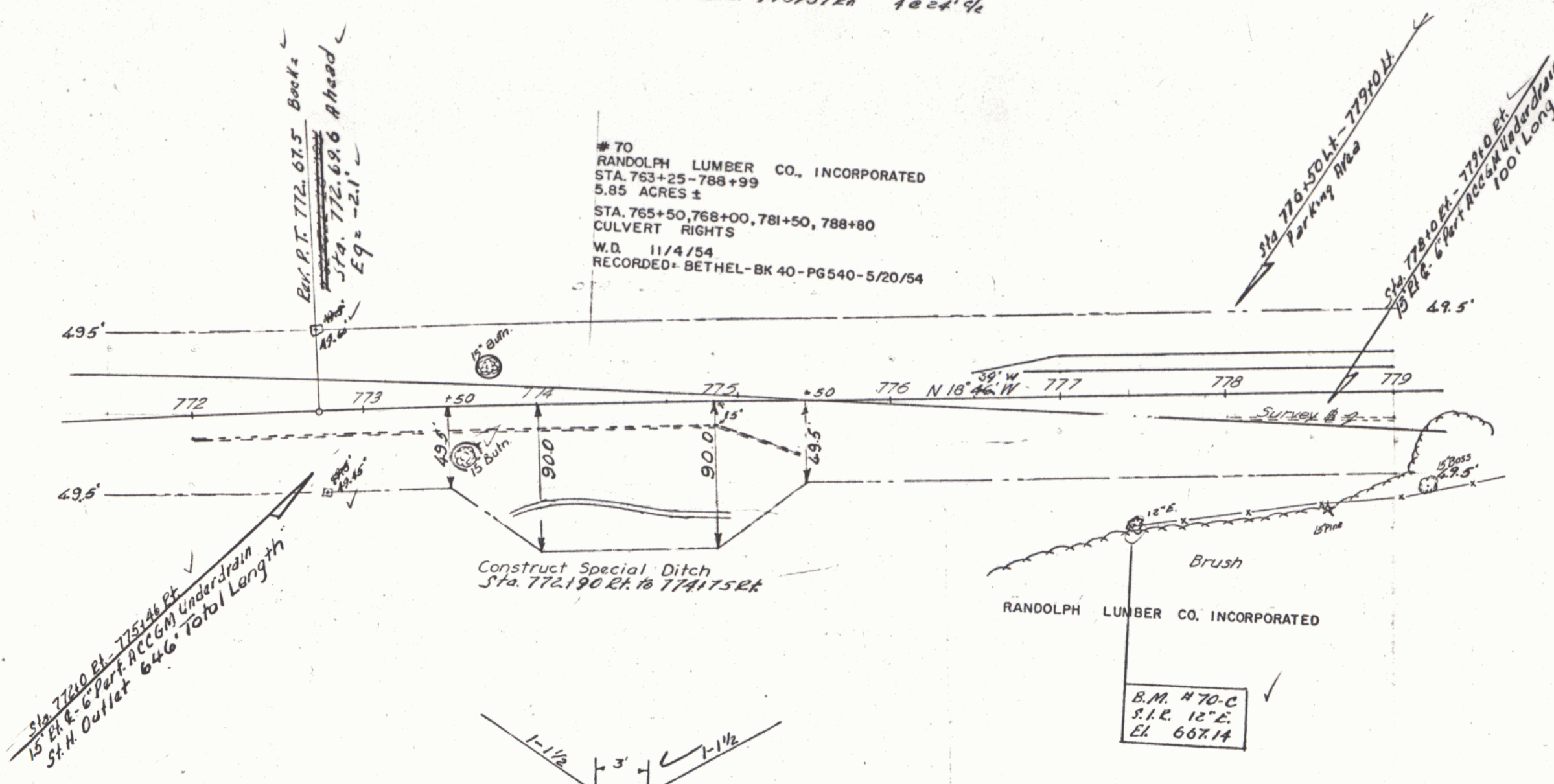


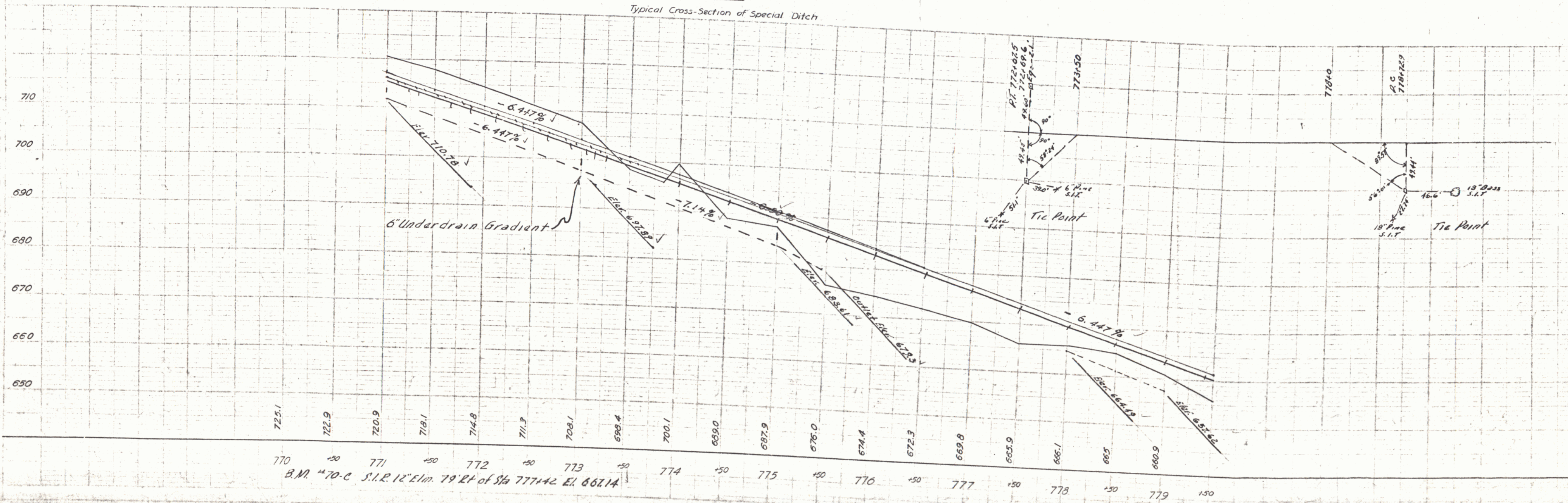
○ C. & R. TREE  
ITEM 110

Steel Guide Posts  
Sta. 774+85 Rt. to 775+51 Rt. 100' 4"

VT. #142 (2)



Typical Cross-Section of Special Ditch



B.M. 470-C S.I.R. 12" Elm. 79' Rt. of Sta 777+42 El. 667.14

Spaulding  
A. Parker  
Z. W. Espar

Spaulding  
A. Parker  
Z. W. Espar