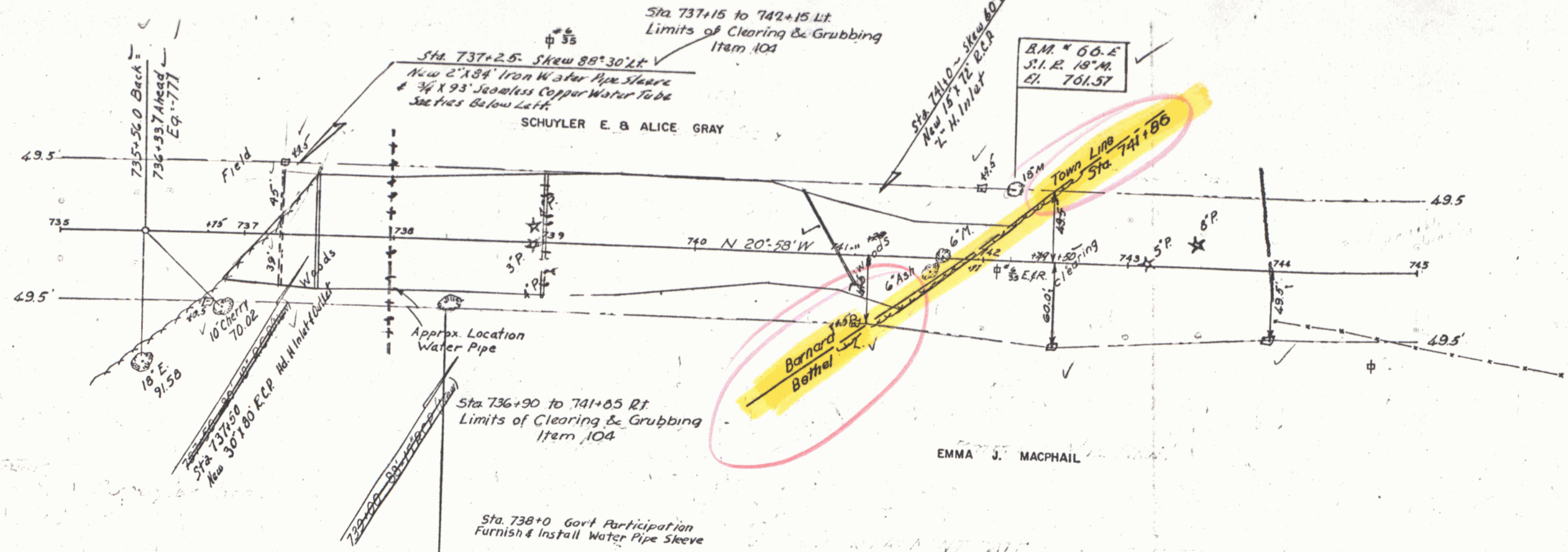


Three Cable Guard Rail / Steel Posts
 Lk. Sta 736+81-741+77. EA
 Sta 736+81-740+17

Construct Drive
 Sta 744+50 Lk.

#68
 FRANCIS & EMMA CAMPBELL
 STA. 737+98
 WATER RIGHTS
 W.D.O.E. 11/1/54
 RECORDED: BARNARD-BK 31-PG 540-1/13/55

STATE: VT. REG. NO. 1102 (2) FISCAL YEAR: 1955
 DISTRICT: 10 POST: 45-23

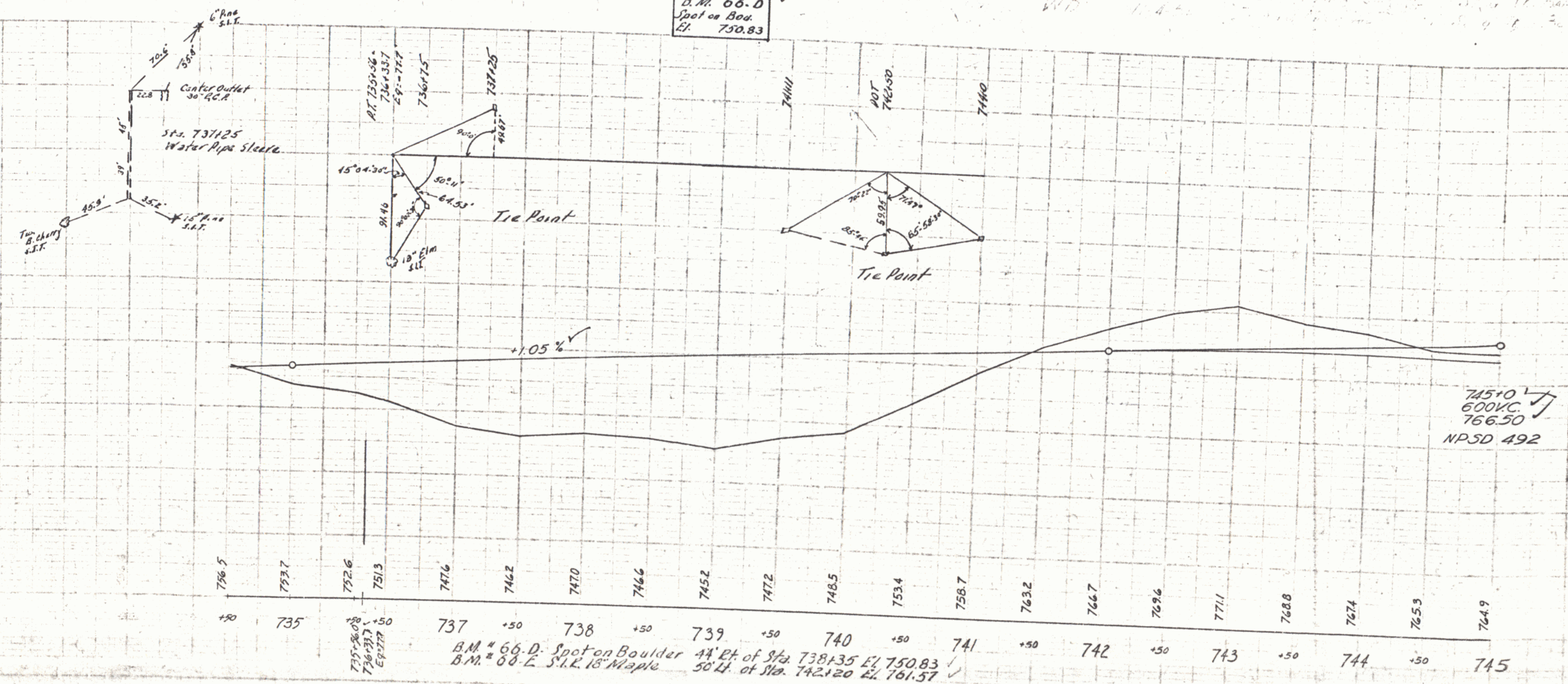


SCHUYLER E. & ALICE GRAY

EMMA J. MACPHAIL

Sta 738+0 Govt Participation
 Furnish & Install Water Pipe Sleeve

B.M. 66-D
 Spot on Boulder
 El. 750.83



B.M. # 66-D Spot on Boulder 44' E of Sta 738+35 El. 750.83
 B.M. # 66-E S.K.E. 18' Maple 50' E of Sta 742+20 El. 761.37

745+0
 600V.C.
 766.50
 NPSD 492

9-53
 Spaulding
 A. Parker
 G. O. Usher
 Z. W. Espar
 11-53

9-53
 Spaulding
 A. Parker
 G. O. Usher
 Z. W. Espar
 11-53