

C. & R. TREE
 ITEM 110

57 E
 LINWOOD B. & LENA B. ROBERTS
 STA. 635+25-636+25
 SLOPE RIGHTS
 W.D.O.E. 5/13/55
 RECORDED: BARNARD-BK 32-PG 109-5/20/55

57 C
 LINWOOD B. & LENA B. ROBERTS
 STA. 635+29.1-645+00
 0.21 ACRE ±
 W.D.O.E. 11/1/54
 RECORDED: BARNARD-BK31-PG 559/560-1/28/55

58 B
 ANDREW W. & DORIS E. DAVIS
 STA. 645+00-647+55
 0.04 ACRE ±
 COND. 9/17/54
 RECORDED: BARNARD-BK31-PG 479/495-9/17/54

58 A
 ANDREW W. & DORIS E. DAVIS
 STA. 640+50-645+00
 0.23 ACRE ±
 COND. 9/17/54
 RECORDED: BARNARD-BK31-PG 479/495-9/17/54

58 C
 ANDREW W. & DORIS E. DAVIS
 STA. 645+00-645+00
 SLOPE RIGHTS
 STA. 645+00
 DRAINAGE RIGHTS
 W.D.O.E. 12/16/55
 RECORDED: BARNARD-BK32
 PG 134-2/3/56

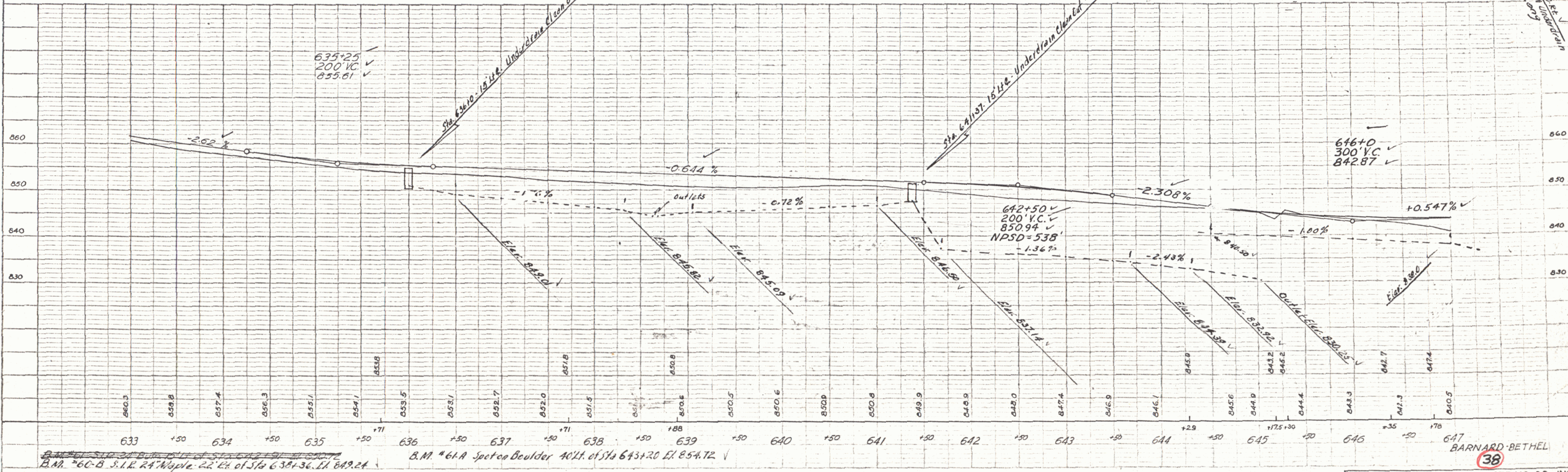
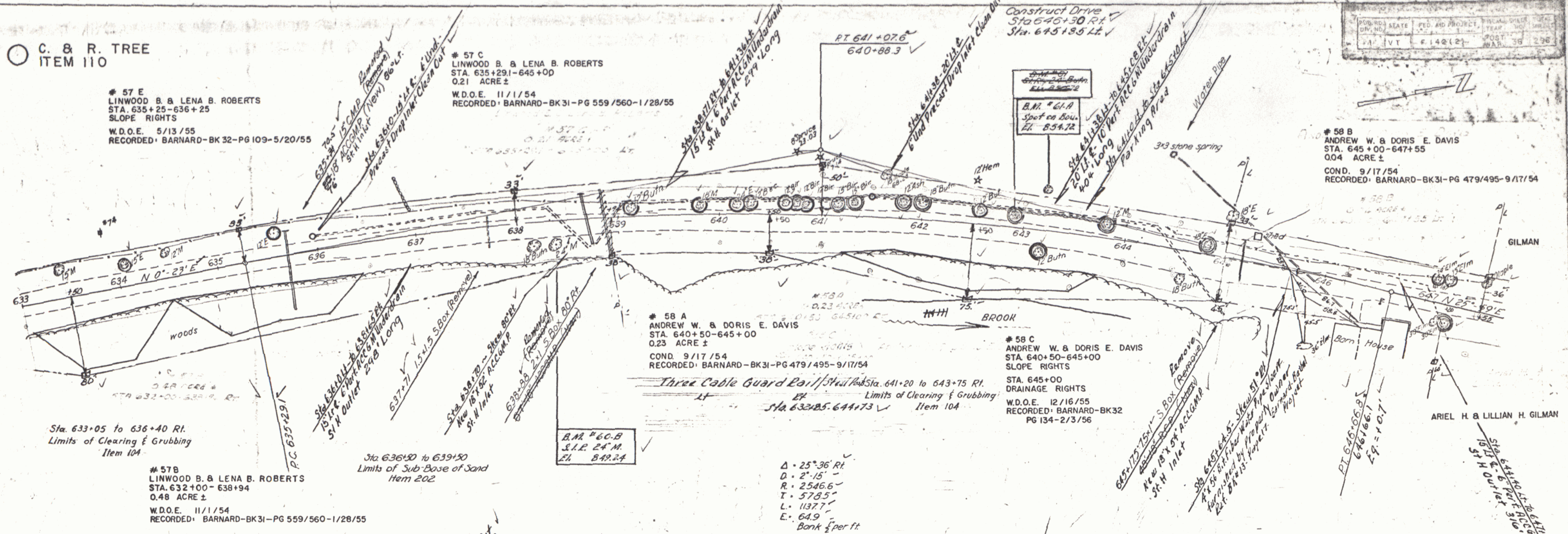
57 B
 LINWOOD B. & LENA B. ROBERTS
 STA. 632+00-638+94
 0.48 ACRE ±
 W.D.O.E. 11/1/54
 RECORDED: BARNARD-BK31-PG 559/560-1/28/55

B.M. #60-B
 S.I.R. 24" M.
 E.L. 849.24

Δ. 25°36' Rt
 D. 2'15"
 R. 2546.6
 T. 578.5
 L. 1137.7
 E. 64.9
 Bank 1/2 per ft

PLAN
 DATE 9/53
 DRAWN BY S. W. ESPER
 CHECKED BY S. W. ESPER
 NO. 1153

PROFILE
 DATE 9/53
 DRAWN BY S. W. ESPER
 CHECKED BY S. W. ESPER
 NO. 1153



B.M. #60-B S.I.R. 24" Maple 22' E.L. of Sta 638+36 E.L. 849.24
 B.M. #61-A Spot on Boulder NW 1/4 of Sta 643+20 E.L. 854.72