

53 A
LEE V. & GERTRUDE D. WARD
STA. 572+00
CULVERT RIGHTS

C. & R. TREE
ITEM 110

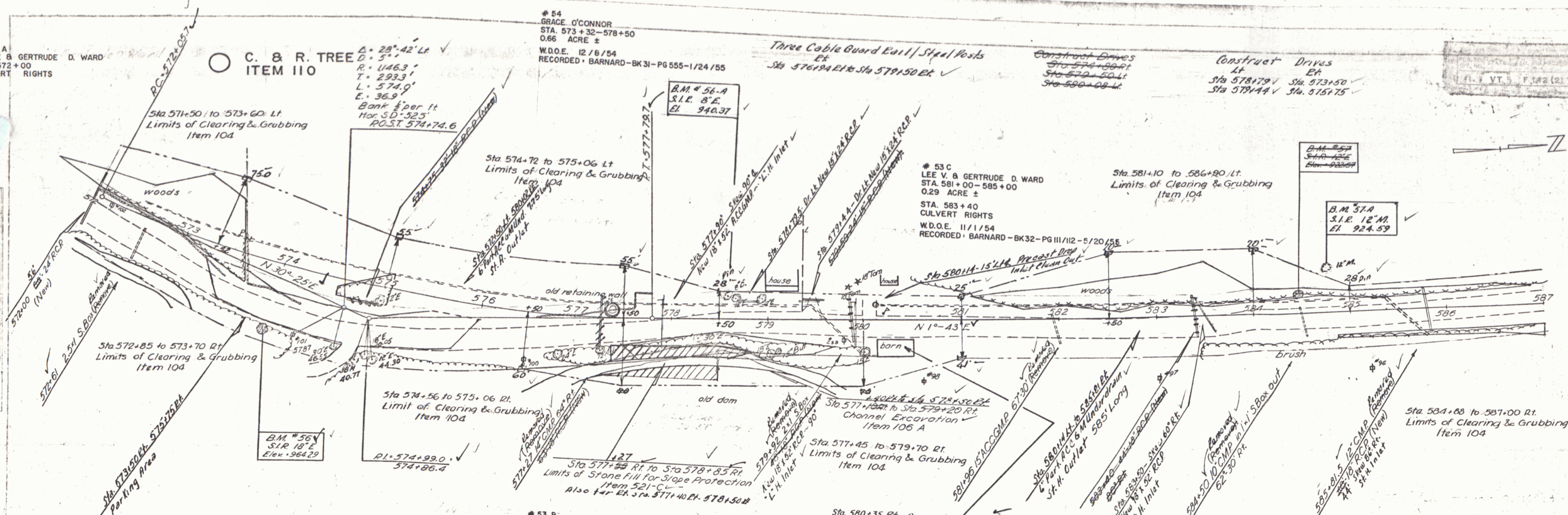
54
GRACE O'CONNOR
STA. 573+32-578+50
0.66 ACRE ±
W.D.O.E. 12/16/54
RECORDED: BARNARD-BK31-PG 555-1/24/55

Three Cable Guard Rail / Steel Posts
Sta 576+94 Rt to Sta 579+50 Rt

Construct Drives
Sta 574+90 Rt
Sta 574+50 Lt
Sta 580+08 Lt

Construct Drives
Sta 578+79 V
Sta 573+50 V
Sta 579+44 V
Sta 575+75 V

MASSACHUSETTS
PL. & VT. F. 122 (2)



53 C
LEE V. & GERTRUDE D. WARD
STA. 581+00-585+00
0.29 ACRE ±
CULVERT RIGHTS
W.D.O.E. 11/1/54
RECORDED: BARNARD-BK32-PG III/112-5/20/55

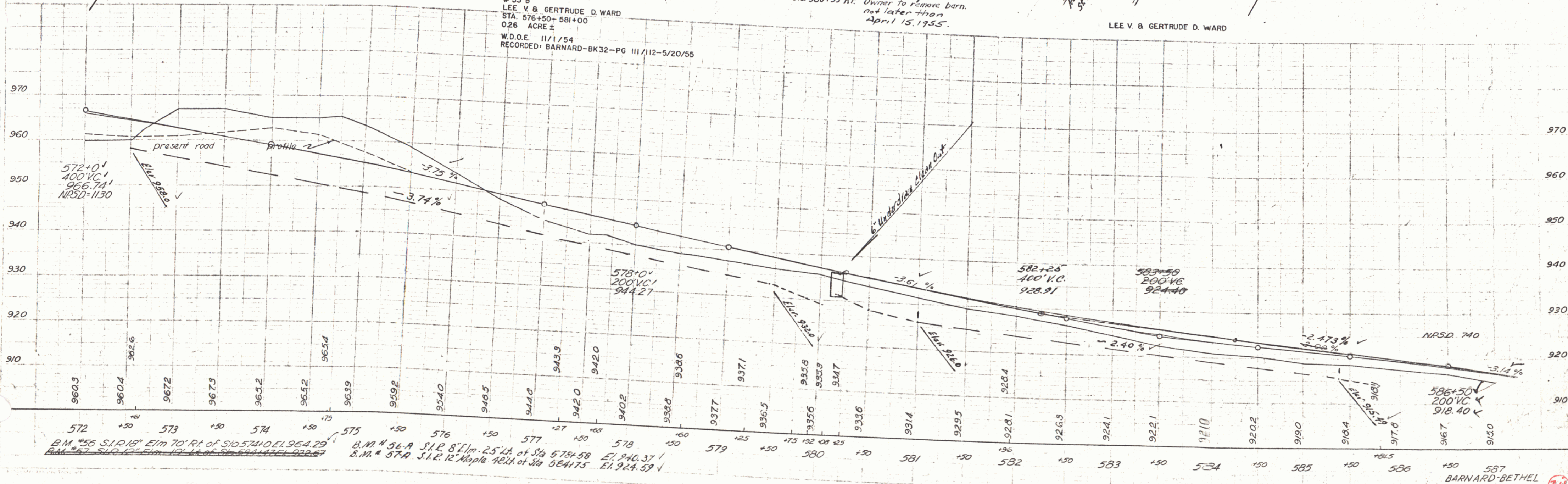
Sta 581+10 to 586+90 Lt
Limits of Clearing & Grubbing
Item 104

B.M. 57A
S.I.E. 12' M.
EL. 924.59

53 B
LEE V. & GERTRUDE D. WARD
STA. 576+50-581+00
0.26 ACRE ±
W.D.O.E. 11/1/54
RECORDED: BARNARD-BK32-PG III/112-5/20/55

Sta 580+35 Rt. Owner to remove barn
not later than
April 15, 1955.

LEE V. & GERTRUDE D. WARD



B.M. #56 S.I.P. 18' Elm 70' Rt of Sta 574+00 El. 954.29
B.M. #57 S.I.P. 12' Elm 10' Lt of Sta 574+17 El. 922.67
B.M. #56-A S.I.P. 8' Elm. 25' Lt. of Sta 578+58 El. 940.37
B.M. #57A S.I.E. 12' Maple 42' Lt. of Sta 584+75 El. 924.59