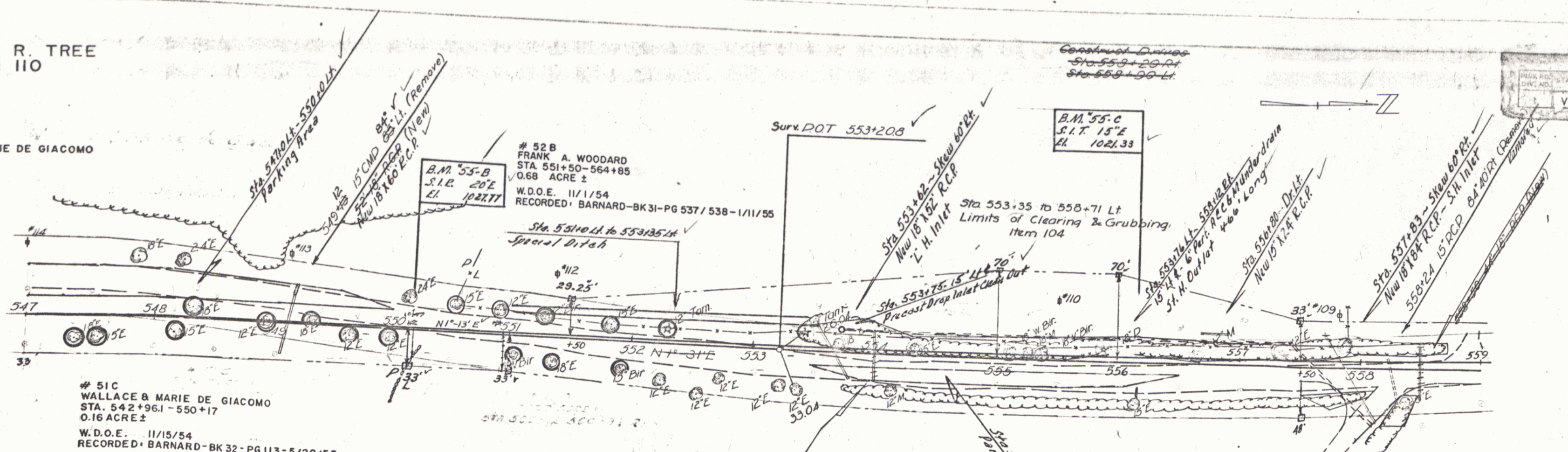


○ C. & R. TREE
ITEM 110

WALLACE & MARIE DE GIACOMO



51C
WALLACE & MARIE DE GIACOMO
STA. 542+96.1 - 550+17
0.16 ACRE ±
W.D.O.E. 11/15/54
RECORDED: BARNARD-BK 32 - PG 113 - 5/20/55

52B
FRANK A. WOODARD
STA. 551+50 - 564+85
0.68 ACRE ±
W.D.O.E. 11/1/54
RECORDED: BARNARD-BK 31 - PG 537/538 - 1/11/55

52A
FRANK A. WOODARD
STA. 550+12 - 550+94
0.007 ACRE ±
W.D.O.E. 11/1/54
RECORDED: BARNARD-BK 31 - PG 537/538 - 1/11/55

Construct Drives
Sta. 559+20 to 559+50
Sta. 559+50 to 559+80

B.M. 55-C
S.I.T. 15"E
El. 1021.33

Sta. 557+50 to 558+10 Pt
Limits of Clearing & Grubbing
Item 104

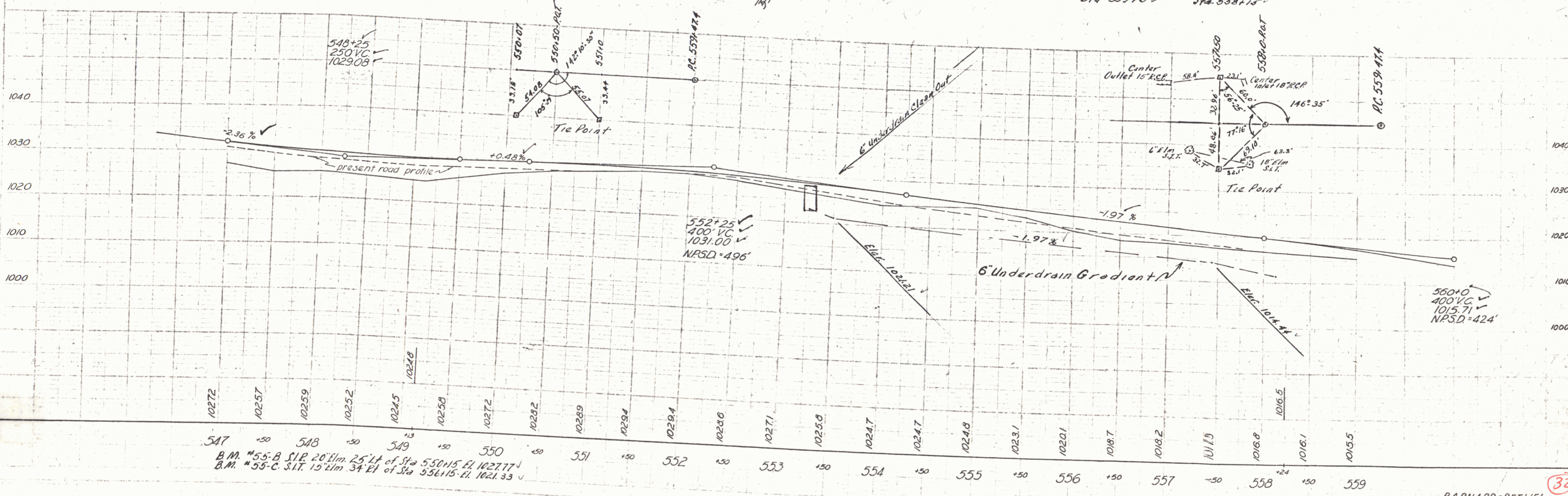
Sta. 558+15 to 558+45 Pt
Limits of Clearing & Grubbing
Item 104

Parking Areas

| | |
|-------------------|--------------------|
| LT | ET |
| Sta 547+0 - 550+0 | Sta 553+0 - 556+50 |
| Construct | Drives |
| LT | ET |
| Sta 556+80 | Sta 553+50 |
| Sta 559+0 | Sta 558+15 |

9-53
 Spaulding
 Z.W.E. Spaulding
 11-53

9-53
 Spaulding
 Z.W.E. Spaulding
 11-53



547 +50 548 +50 549 +50 550 +50 551 +50 552 +50 553 +50 554 +50 555 +50 556 +50 557 +50 558 +50 559

B.M. #55-B S.I.T. 20"E 25' Lt of Sta 550+15 El. 1027.77
B.M. #55-C S.I.T. 15"E 34' Et of Sta 556+15 El. 1021.33

VT F 142 (2) MAR 32 1956