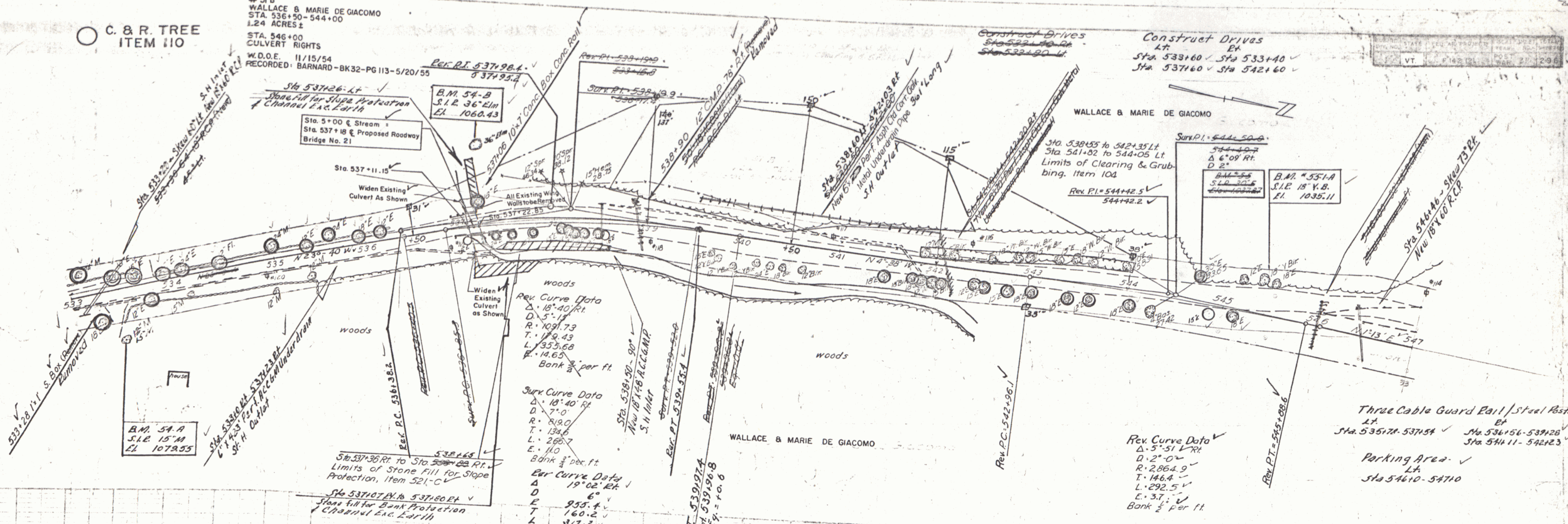


C. & R. TREE
ITEM 110

51 B
WALLACE & MARIE DE GIACOMO
STA. 536+50 - 544+00
1.24 ACRES ±
STA. 546+00
CULVERT RIGHTS
W.D.O.E. 11/15/54
RECORDED: BARNARD - BK32-PG 113-5/20/55

Construct Drives
Sta. 533+00 to Sta. 533+40
Sta. 533+80 to Sta. 533+100

Construct Drives
Sta. 533+60 to Sta. 533+80
Sta. 537+60 to Sta. 542+60



woods
Rev Curve Data
Δ 18° 40' Rt.
D 5' 11"
R 1091.73
T 179.43
L 355.68
E 14.65
Bank 2 per ft.

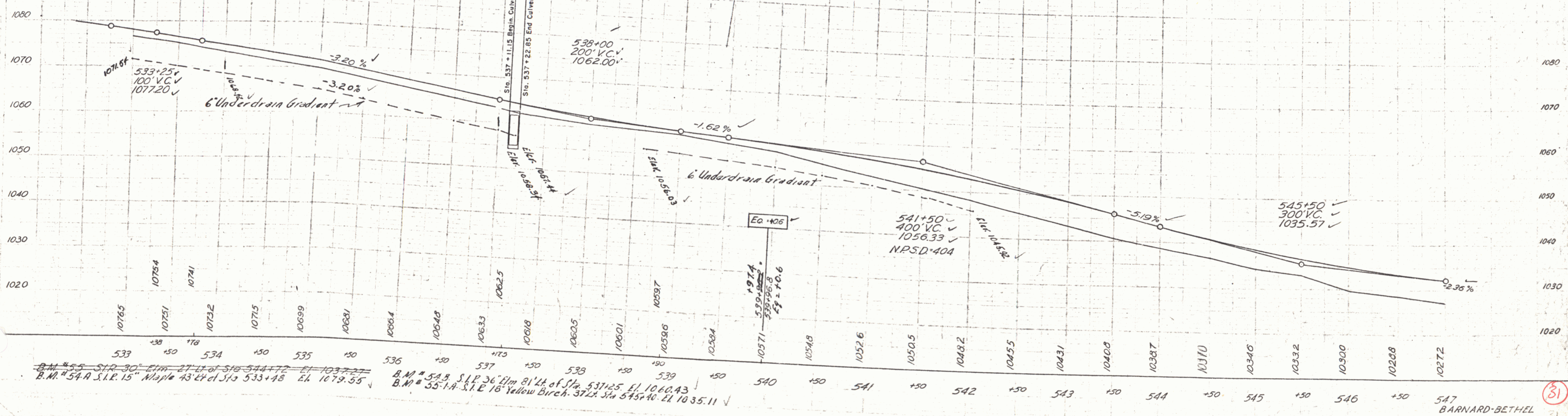
Surf Curve Data
Δ 18° 40' Rt.
D 7' 0"
R 819.0
T 134.6
L 266.7
E 11.0
Bank 2 per ft.

Ear Curve Data
Δ 19° 02' Rt.
D 6'
E 955.4
T 160.2
L 317.2
E 18.3

Rev Curve Data
Δ 5° 51' L
D 2' 0"
R 2864.9
T 146.4
L 292.5
E 3.7
Bank 2 per ft.

Three Cable Guard Rail / Steel Posts
Sta. 535+74 - 537+54
Sta. 536+56 - 539+28
Sta. 541+11 - 542+23

Parking Area
Sta. 546+10 - 547+10



B.M. # 55 S.I.R. 30' Elm 27' Lt. of Sta. 544+72 El. 1037.22
B.M. # 54-A S.I.R. 15" Maple 43' 24" of Sta. 533+48 El. 1079.55
B.M. # 54-B S.I.R. 36' Elm 81' Lt. of Sta. 537+25 El. 1060.43
B.M. # 55-1-A S.I.R. 18" Yellow Birch 37' Lt. Sta. 545+40 El. 1035.11