

C. & R. TREE
ITEM 110

Three Cable Guard Rail
Sta 486+82-488+90

Construct Approaches
Sta 486+50-488+90
Sta 489+50-491+90

Construct Drives

- Sta 483+25
- Sta 483+96
- Sta 488+50
- Sta 490+75
- Sta 491+17
- Sta 492+90
- Sta 483+35
- Sta 484+80
- Sta 483+20
- Sta 485+60

Rev. Curve Data
Δ 77° 40' Lt
D 35
R 163.7
T 131.8
L 221.9

Removed Curve Data
Δ 76° 10' Lt
D 35
R 163.7
T 120.3
L 217.6
E 44.3
Bank 3/4 per ft
Hor. S.D. 135'

Construct Drives
Sta 489+40-491+40
Sta 491+40-493+40
Sta 493+40-495+40
Sta 495+40-497+40
Sta 497+40-499+40
Sta 499+40-501+40

Rev. P.I. 491+63.3
491+40.7

B.M. #49
S.T.R. 36" M.
Elev. 1293.53

CURTIS O. & CLARENCE
N. HATHORN
Sta 492+10-492+10
New 15' x 24" R.C.P.

GLADYS WILSON BUNDY

EDWARD F. & EDITH H.
WARD

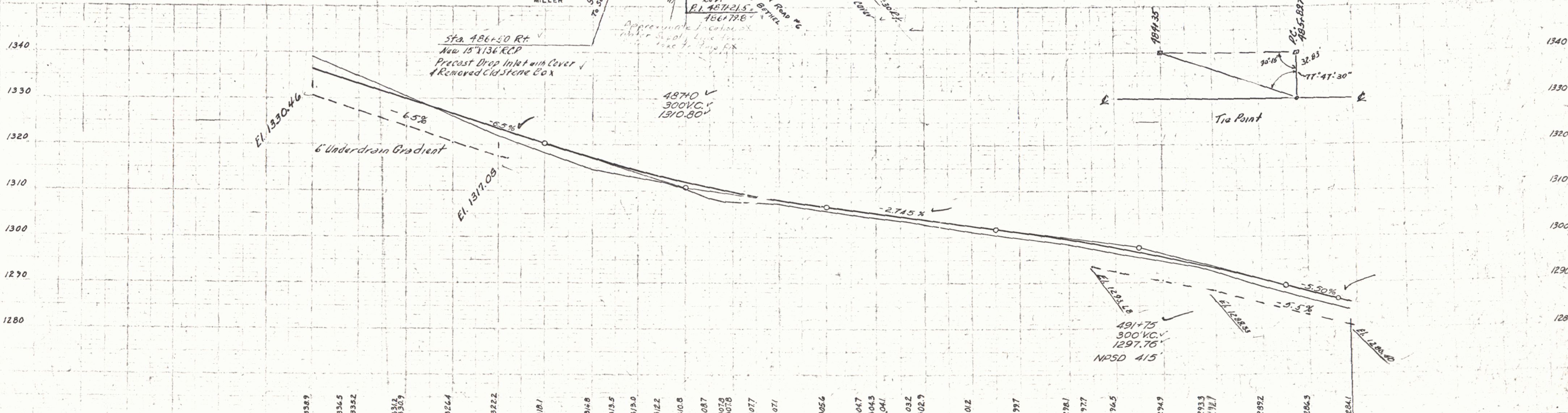
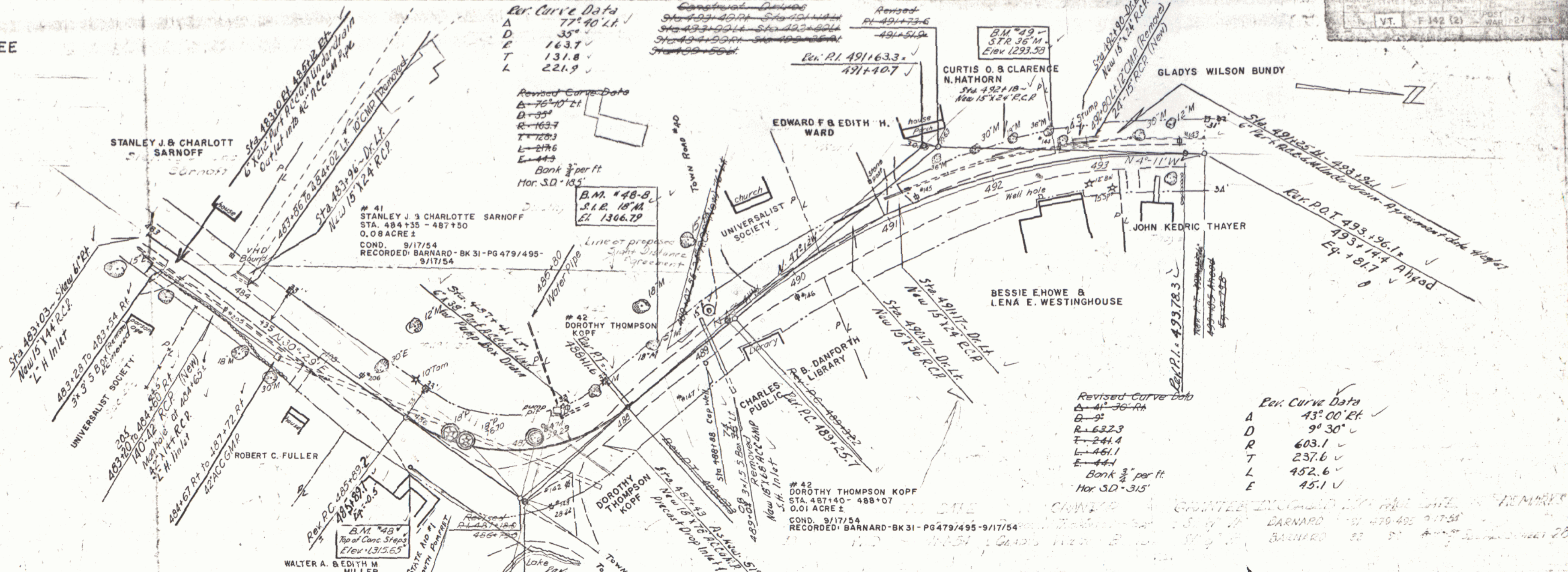
UNIVERSALIST
SOCIETY

JOHN KEDRIC THAYER

BESSIE E. HOWE &
LENA E. WESTINGHOUSE

Revised Curve Data
Δ 41° 35' Rt
D 9
R 632.3
T 241.4
L 461.1
E 44.4
Bank 3/4 per ft
Hor. S.D. 315'

Rev. Curve Data
Δ 43° 00' Rt
D 9
R 603.1
T 237.6
L 452.6
E 45.1



B.M. #48 Spot on Conc Steps 40' Rt. of Sta. 486+21 El. 1315.65
B.M. #49 S.T.R. 36" Maple 32' Lt. of Sta. 492+58 El. 1293.53
B.M. #48-B S.T. 18" Maple 28' Lt. Sta. 489+10 El. 1306.79

BARNARD-BETHEL

THE CLARKSON ENGINEERING CO., INC.
CONSULTING ENGINEERS
BOSTON MASSACHUSETTS