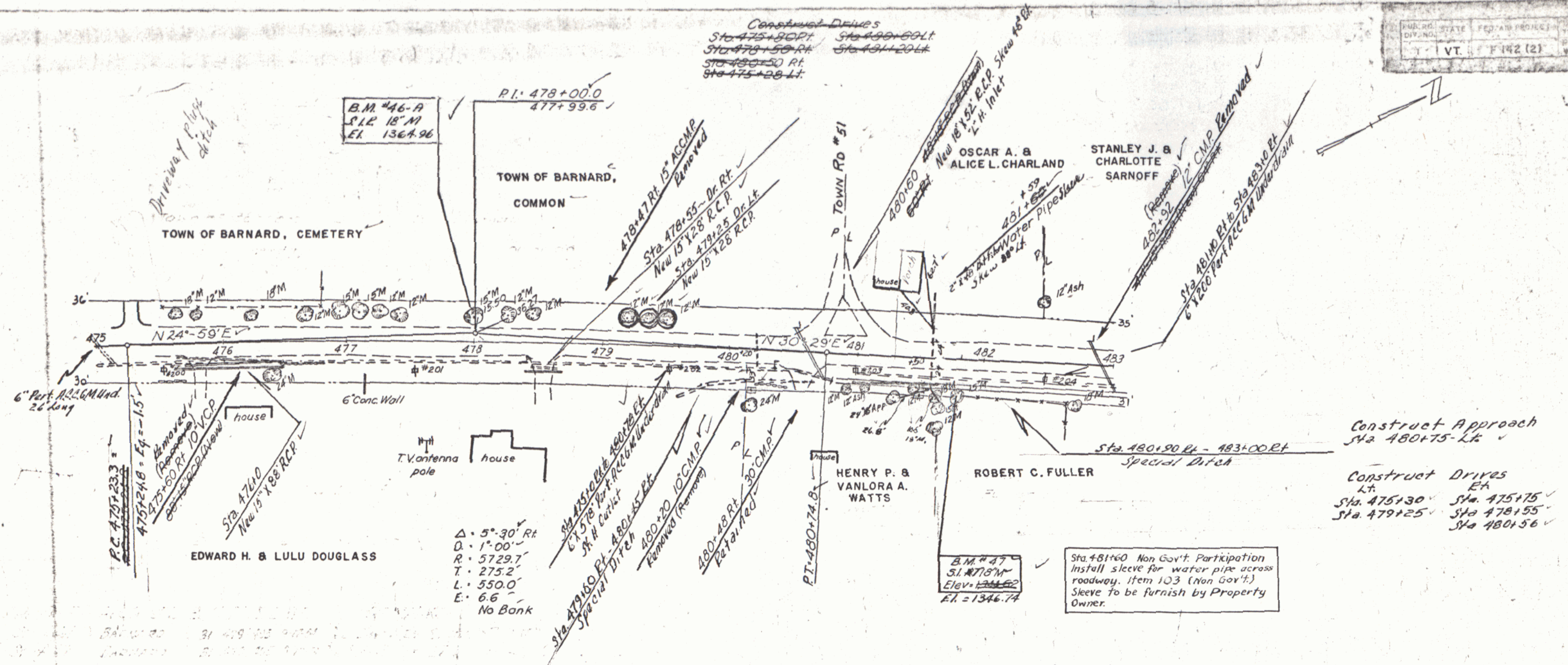


○ C. & R. TREE
ITEM 110

MASSACHUSETTS REGISTERED PROFESSIONAL ENGINEER
DIV. NO. 1 F 142 (2) PAGE 25 OF 295
T. V. T. 1942



Δ • 5°-30' Rt
D • 1°-00'
R • 5729.7
T • 275.2
L • 550.0
E • 6.6
No Bank

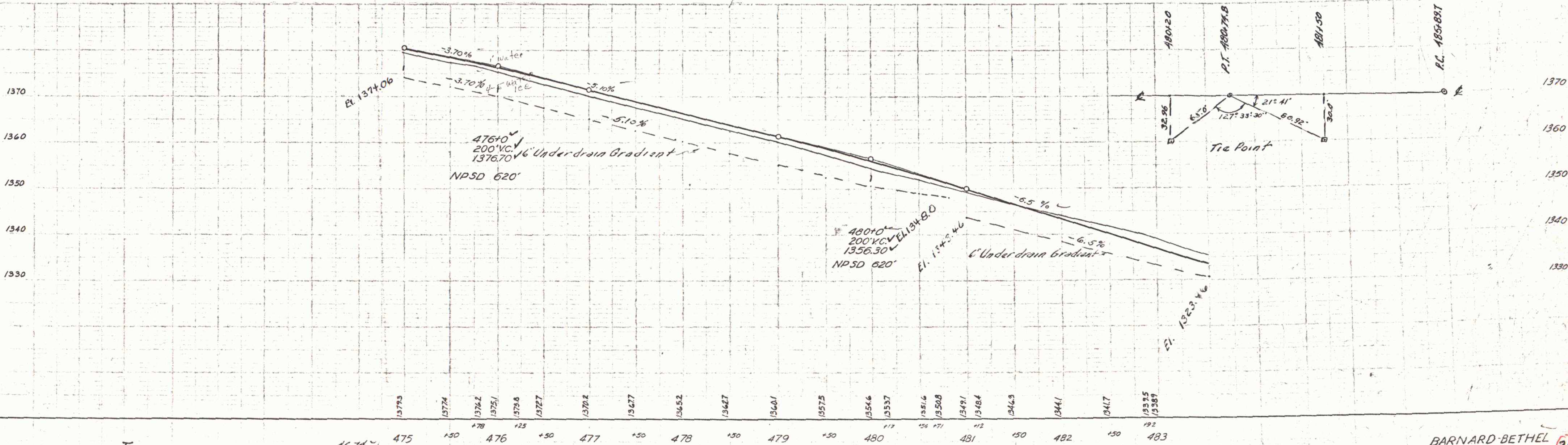
B.M. # 47
51' 18" Maple
Elev. 1346.62
E.L. = 1346.74

Sta 481+60 Non Gov't. Participation
Install sleeve for water pipe across
roadway. Item 103 (Non Gov't.)
Sleeve to be furnish by Property
Owner.

Construct Approach
Sta 480+75 - Lk
Construct Drives
Lk
Sta 475+30 EA
Sta 479+25 Sta 475+15
Sta 478+55 Sta 480+56

Spaulding
A. Hoag
C. Guest
Z. W. Espar
10-53
11-53
11-53

Spaulding
A. Hoag
C. Guest
Z. W. Espar
9-53
12-53
1-54
5-54



B.M. # 47 51' 18" Maple 29' Rt of Sta 481+82 El. 1346.74
B.M. # 46-A 51' E. 18" Maple 21' Lt of Sta 478+04 - Lk 1364.96