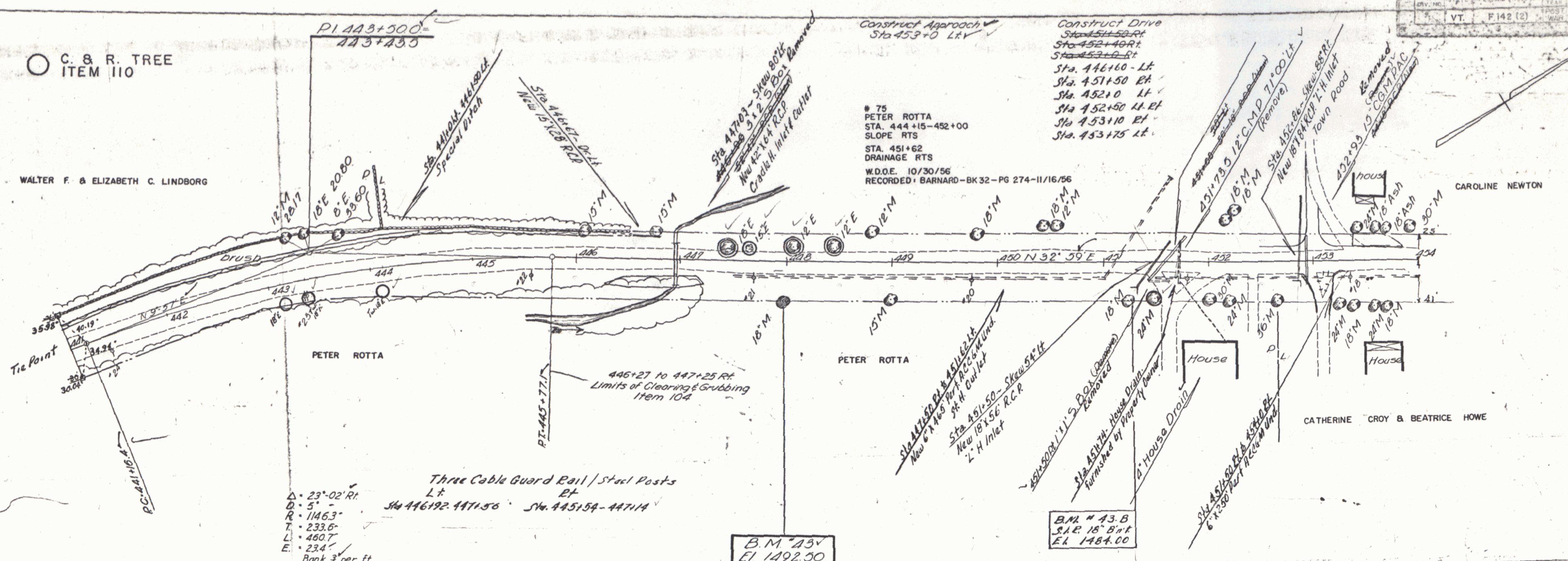


PLAN
 DATE: 9-56
 DRAWN BY: ZIN ESPO
 CHECKED BY: POLMER
 NO. 3-02

PROF. 8-89
 DRAWN BY: POLMER
 CHECKED BY: POLMER
 NO. 3-35

C. & R. TREE
 ITEM 110

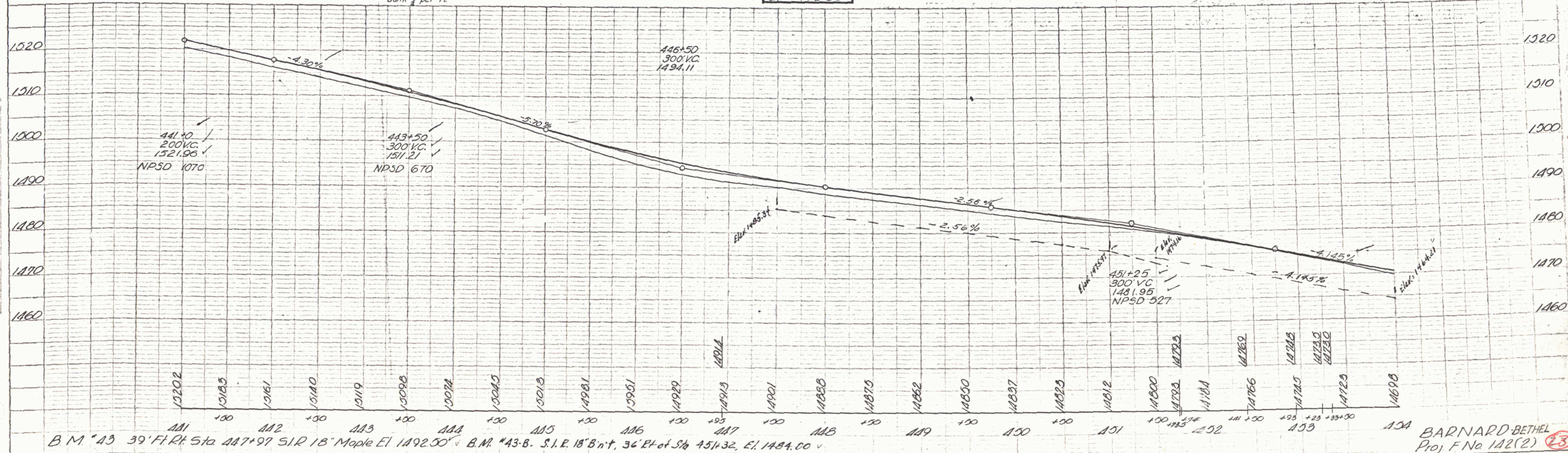
WALTER F. & ELIZABETH C. LINDBORG



Three Cable Guard Rail / Steel Posts
 Lt. Sta. 446+192 - 447+50
 Rt. Sta. 445+54 - 447+14

B.M. #13
 El. 1492.50

B.M. #43.B
 S.I.R. 18" B'n't
 El. 1484.00



B.M. #13 39' F.R. Sta. 447+97 S.I.R. 18" Maple El. 1492.50
 B.M. #43.B. S.I.R. 18" B'n't, 36' E. of Sta. 451+32, El. 1484.00