

C. & R. TREE
 ITEM 110

Construct Drives
 Sta. 368+00 to 368+40 Lt.
 Sta. 368+15 Et.
 Sta. 368+20 Lt.

Three Cable Guard Rail
 Lt. Sta. 364+00 to 368+10
 Et. Sta. 365+44 to 367+68

B.M. #34-A
 S.I.R. 24' Maple
 Elev. 1454.71

B.M. #34-B
 S.I.R. 24' M.
 Elev. 1463.29

B.M. #34-C
 Spot on Ledge
 Elev. 1503.65

B.M. #35-A
 S.I.R. 14' Maple
 Elev. 1521.85

364+00 to 367+38 Lt.
 Limits of Clearing & Grubbing
 Item 104

369+75 to 375+03 Lt.
 Limits of Clearing & Grubbing
 Item 104

36
 JOSEPH H. & KATHERINE M. WARD
 STA. 371+30-394+87
 6.9 ACRES
 STA. 379+50, 384+00, 391+50
 CULVERT RIGHTS
 W.D.O.E. 11/8/54
 RECORDED: BARNARD-BK 32-PG 97-5720/66

ARNOLD V. & LUCY G. POWELL

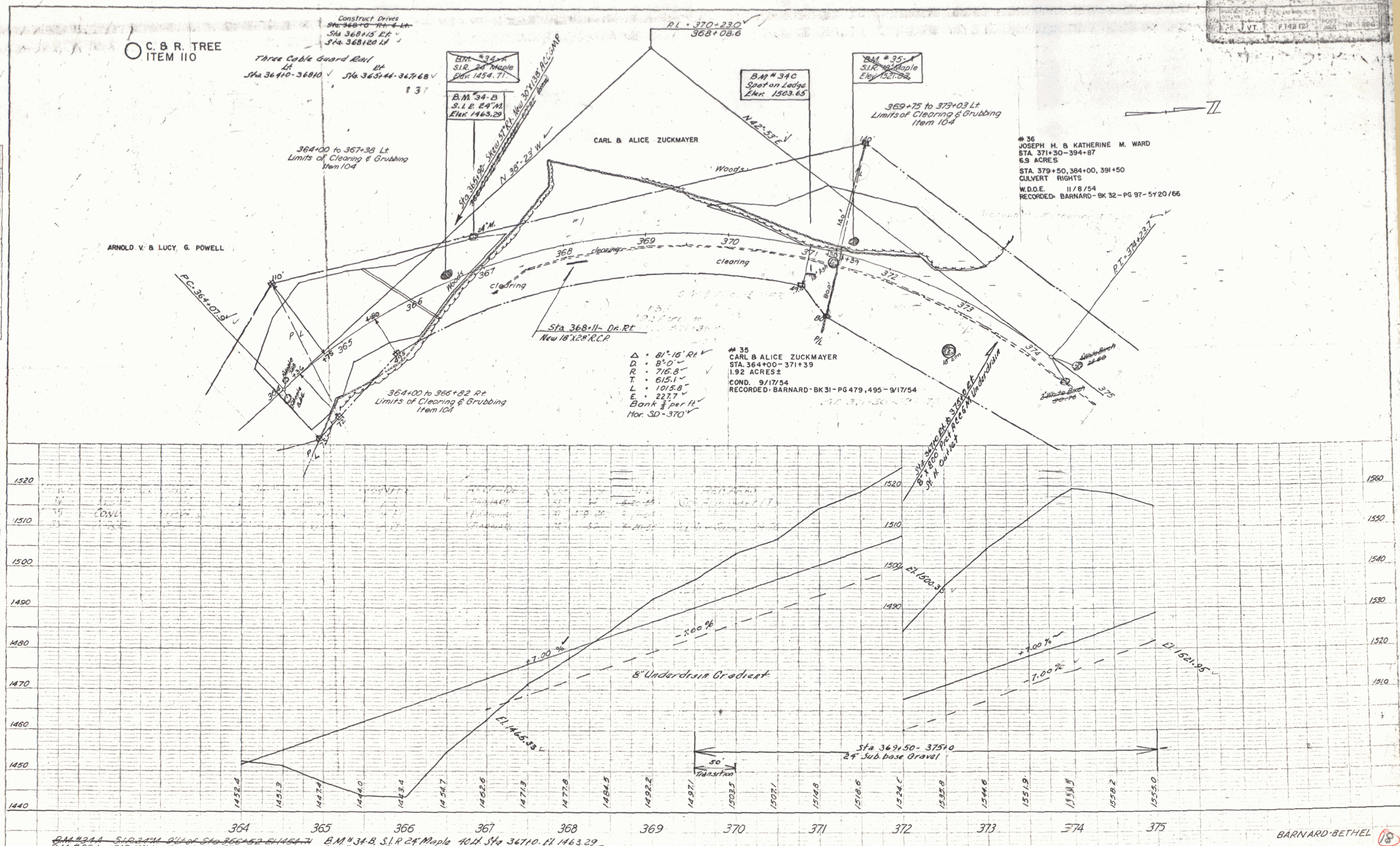
CARL & ALICE ZUCKMAYER

Δ = 81° 16' Rt
 D = 8° 0'
 R = 716.8
 T = 615.1
 L = 1015.8
 E = 22.7
 Bank 1/2 per ft
 Hor. SD = 370'

35
 CARL & ALICE ZUCKMAYER
 STA. 364+00-371+39
 1.92 ACRES ±
 COND. 9/17/54
 RECORDED: BARNARD-BK 31-PG 479, 495-9/17/54

DATE: 10-53
 BY: J. Parker
 CHECKED: W. Esper

DATE: 10-53
 BY: J. Parker
 CHECKED: W. Esper



B.M. #34-A S.I.R. 24' M. 14' Lt. of Sta. 366+52 Elev. 1454.71
 B.M. #34-B S.I.R. 24' Maple 40' Lt. Sta. 367+10 Elev. 1463.29
 B.M. #34-C Spot on Ledge 32' Lt. Sta. 371+10 Elev. 1503.65