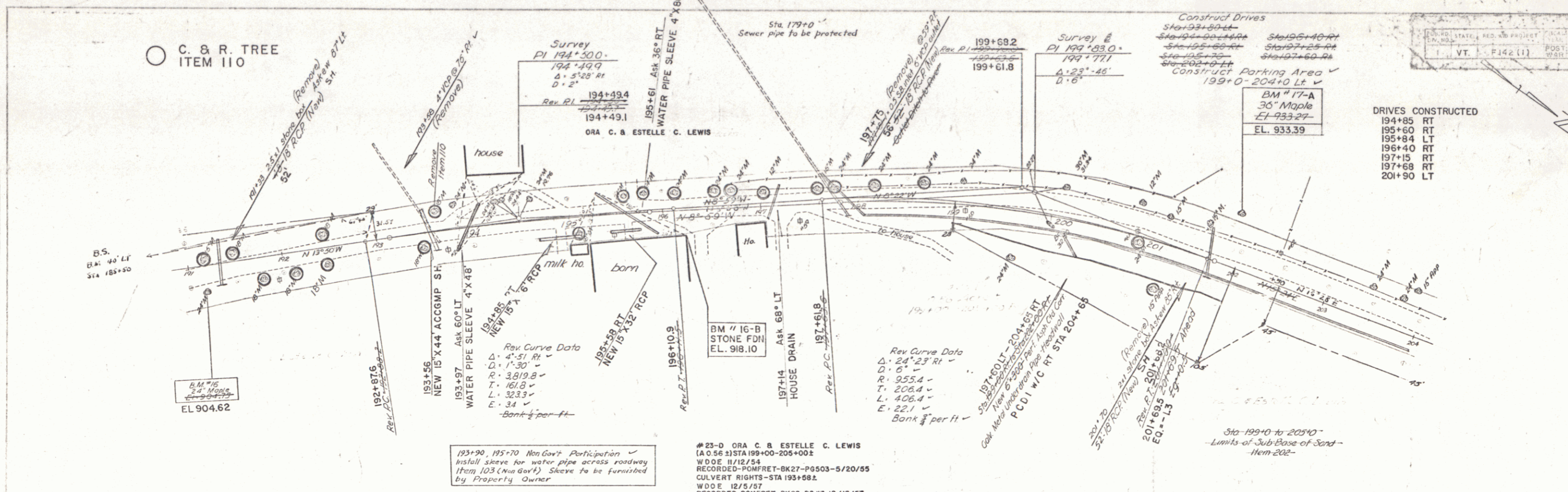


NO. 11-83	7-29
DATE	
BY	
CHECKED	

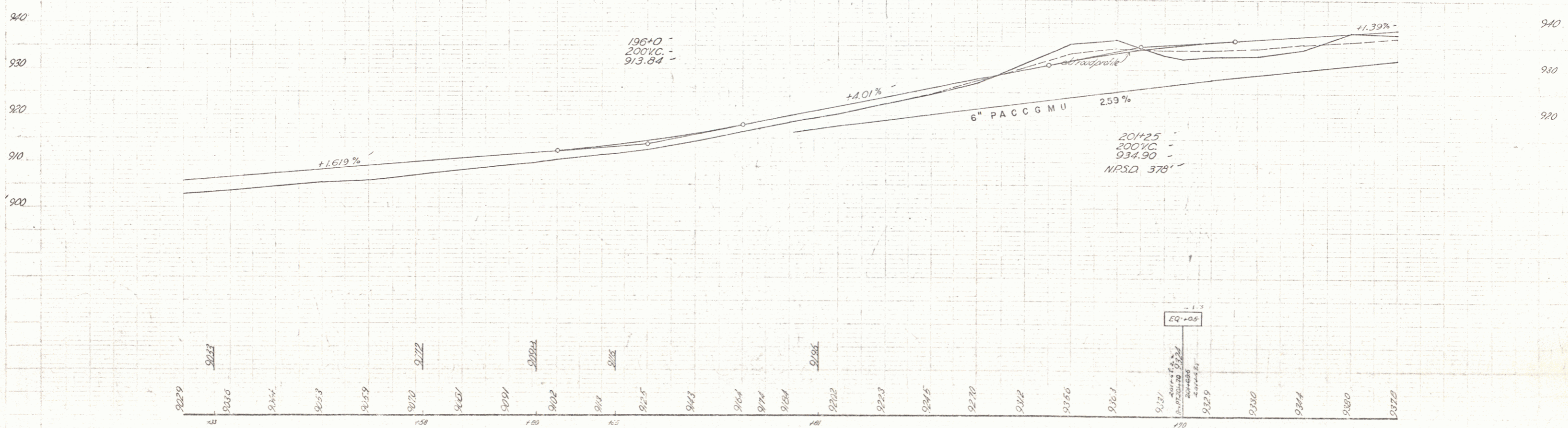


VT. P142(1)

- DRIVES CONSTRUCTED
- 194+85 RT
 - 195+60 RT
 - 195+84 LT
 - 196+40 RT
 - 197+15 RT
 - 197+68 RT
 - 201+90 LT

193+90, 195+70 Non Gov't Participation
 Install sleeve for water pipe across roadway
 from 103 (New Gov't) Sleeve to be furnished
 by Property Owner

#23-D ORA C. B. ESTELLE C. LEWIS
 (A 0.56 S) STA 199+00-205+00E
 W.D.E. 11/12/54
 RECORDED - POMFRET-BK27-PG503-5/20/95
 CULVERT RIGHTS - STA 193+98.2
 W.D.E. 12/5/57
 RECORDED - POMFRET-BK28-PG 17-12/12/57



191 192 193 194 195 196 197 198 199 200 201 202 203 204

THE CLARKSON ENGINEERING CO., INC.
 CONSULTING ENGINEERS
 BOSTON, MASSACHUSETTS