

GUIDE POSTS  
Sta 83+48.11 to 87+00.11

TWO CABLE GUARD RAIL  
Sta 90+43 to 96+99

TWO CABLE GUARD RAIL  
Sta 90+43 Rt. to Sta 96+99 Rt.

CONSTRUCT DRIVES  
91+00 L.  
95+50 R.

FED. ROAD DIV. NO.	STATE	PROJ. NO.	FISCAL YEAR	SHEET NO.	TOTAL SHEETS
1	Vt.				

PARCEL INSTRUMENT DATE #8 A, B, C, D W. D. O. E. 6-21-30

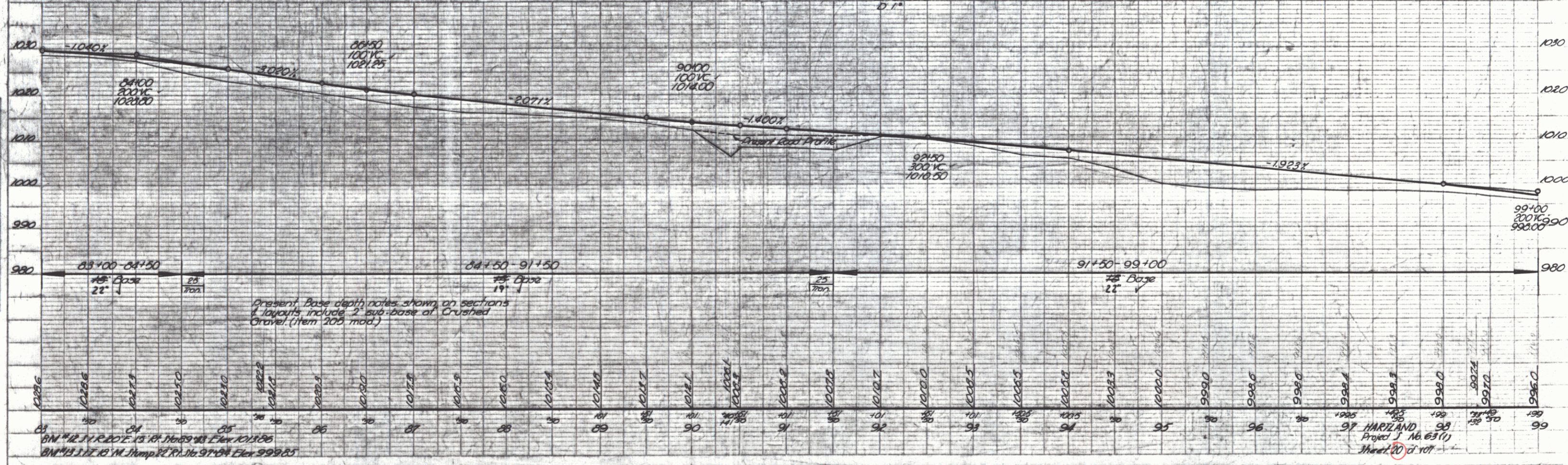
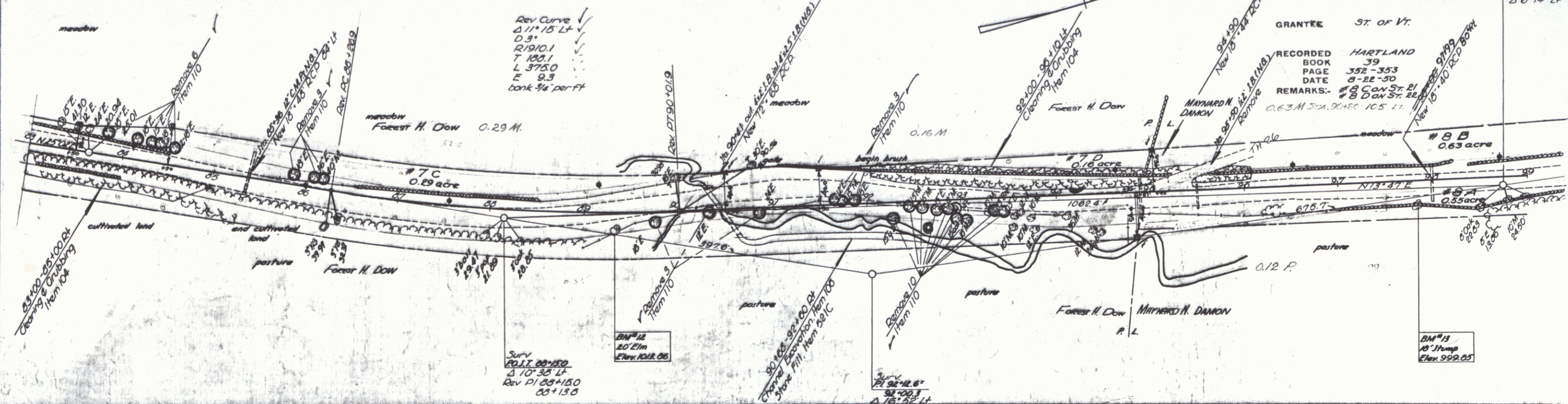
GRANTOR MAYNARD N. DAMON

GRANTEE ST. OF VT.

RECORDED BOOK 39 PAGE 352-353 DATE 8-22-30

REMARKS: #8 CON-ST. R.I. #8 DOW ST. 22' 0.63 M STA. 90+43 TO 105+11

Surf P.O.I.T. 98+76.0 Δ 6'14" Lt



PLAN  
DATE  
BY  
CHECKED  
APPROVED

PROFILE  
DATE  
BY  
CHECKED  
APPROVED