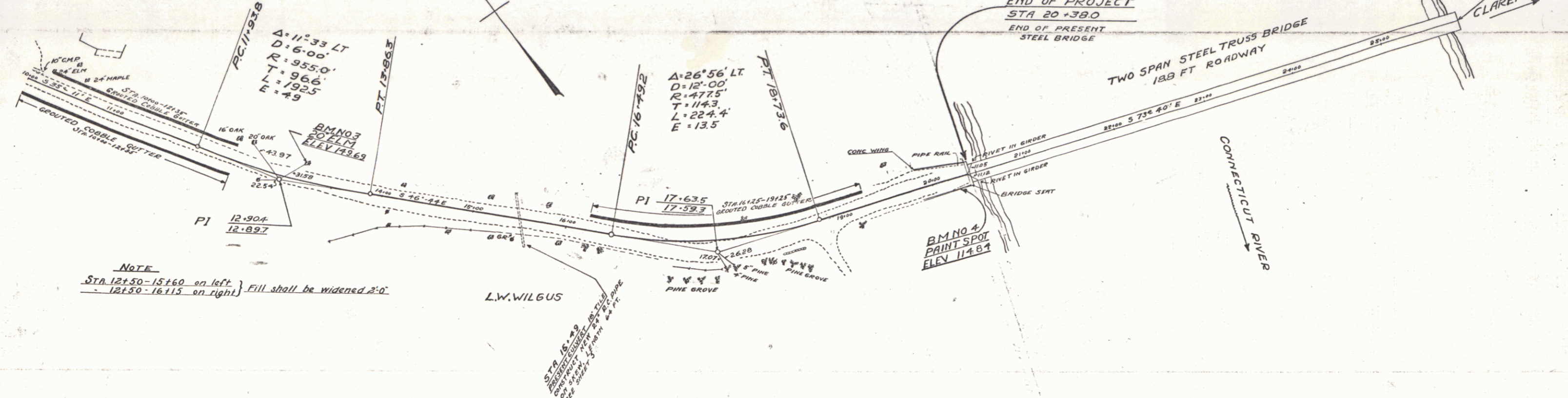


B.M. #1 PAINT SPOT ON CONCRETE CURB ELEV 199.22.  
 B.M. #2 SPIKE IN ROOT OF 30" PINE RIGHT OF STA. 7+00 ± ELEV 190.06.

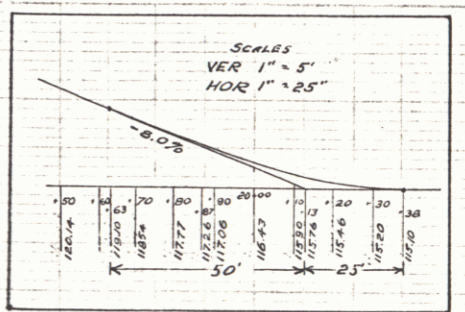
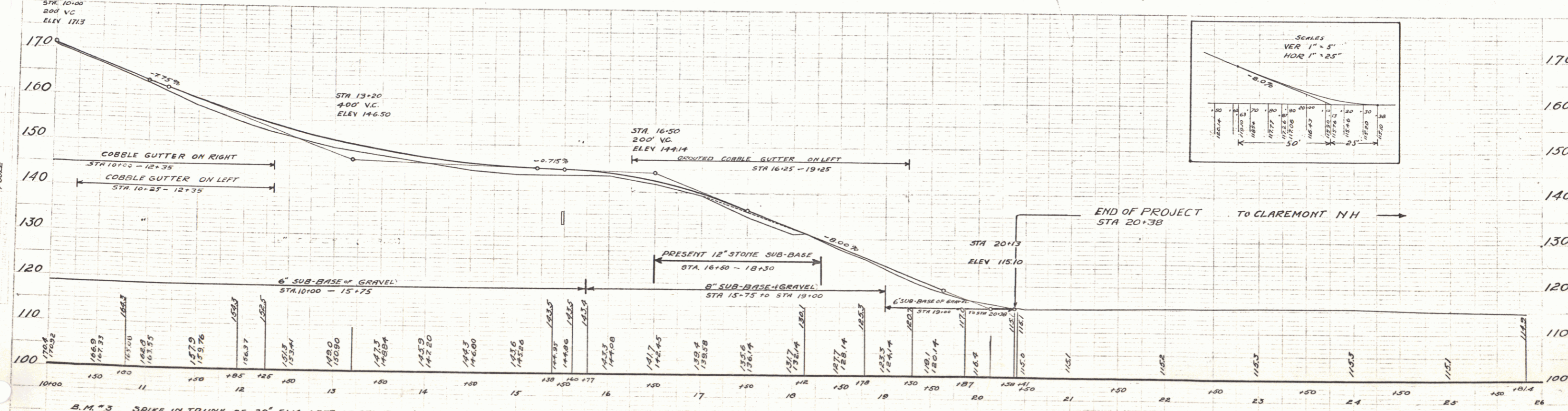
GRAVEL COBBLE CUTTER  
 STA. 10+00 - 12+35 ON RIGHT 7.4 SQ. YDS.  
 STA. 10+25 - 12+35 ON LEFT 30.0 - -  
 STA. 16+25 - 19+25 ON LEFT 100.0 - -

CABLE GUARD RAIL REQUIRED  
 STA. 16+25 - 15+75 48 LINEAR FT.  
 19+39 - 19+07 48 LINEAR FT.  
 ON RIGHT  
 15+29 - 17+16 192 LINEAR FT.  
 19+14 - 19+28 78 LINEAR FT.  
 TOTAL FOR SHEET 360 LINEAR FT.

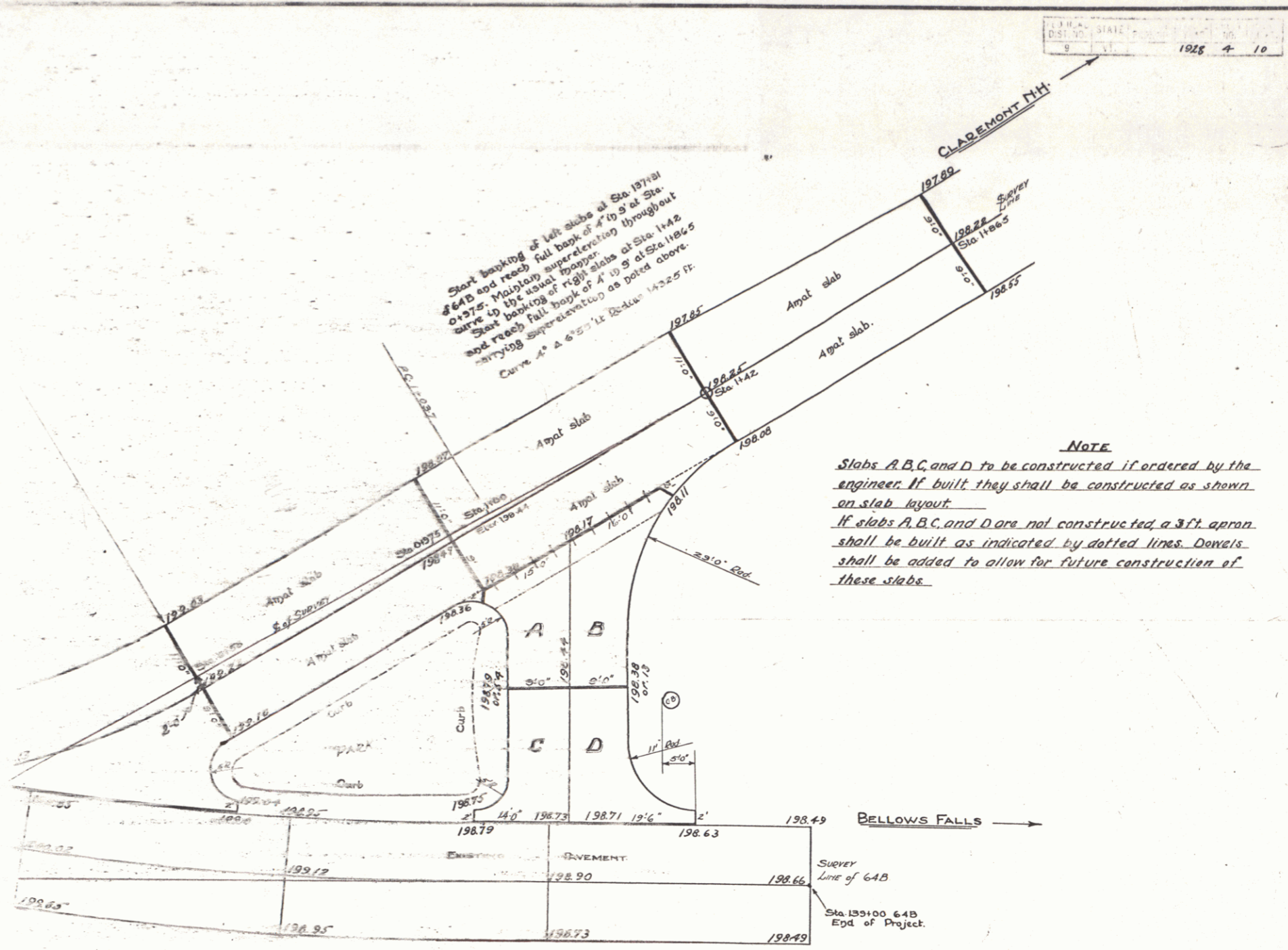
QUANTITIES REQUIRED  
 STA. 15+60 24" REINFORCED CONCRETE PIPE LENGTH 640 FT.  
 CONCRETE CLASS A (1:2:4) 2.0 CU. YDS.  
 REINFORCING STEEL 64.0 LBS.



NOTE  
 STA 12+50 - 15+60 on left } Fill shall be widened 2:1  
 12+50 - 16+15 on right }



B.M. # 3 SPIKE IN TRUNK OF 20" ELM LEFT OF STA. 13+00 ELEV. 149.69.  
 B.M. # 4 PAINT SPOT ON SOUTH CORNER OF WEST ABUTMENT TO BRIDGE OVER CONN. RIVER TO CLAREMONT, N.H. ELEV. 114.84.



--- Dotted joint  
 --- Expansion joint

← PLAN SHOWING ←  
 SLAB-LAYOUT-FOR-PAVEMENT-INTERSECTION  
 - ASCUTNEYVILLE, VERMONT -  
 Scale: 1 inch = 10 ft

Surveyed by D. Wood.  
 Designed by H. E. Sargent.  
 Drawn by S. W. Coleridge.  
 Traced by S. W. Coleridge.  
 Checked by  
 Weatherfield - Ascutneyville - Interspersed  
 Sheet 7 of 10 Sheets