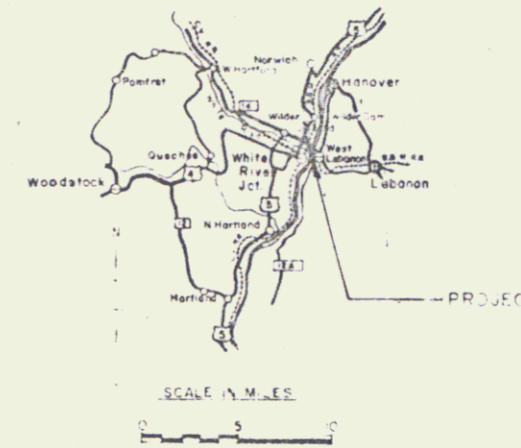


STATE OF VERMONT  
DEPARTMENT OF HIGHWAYS

PROPOSED IMPROVEMENT

FEDERAL AID  
URBAN PROJECT

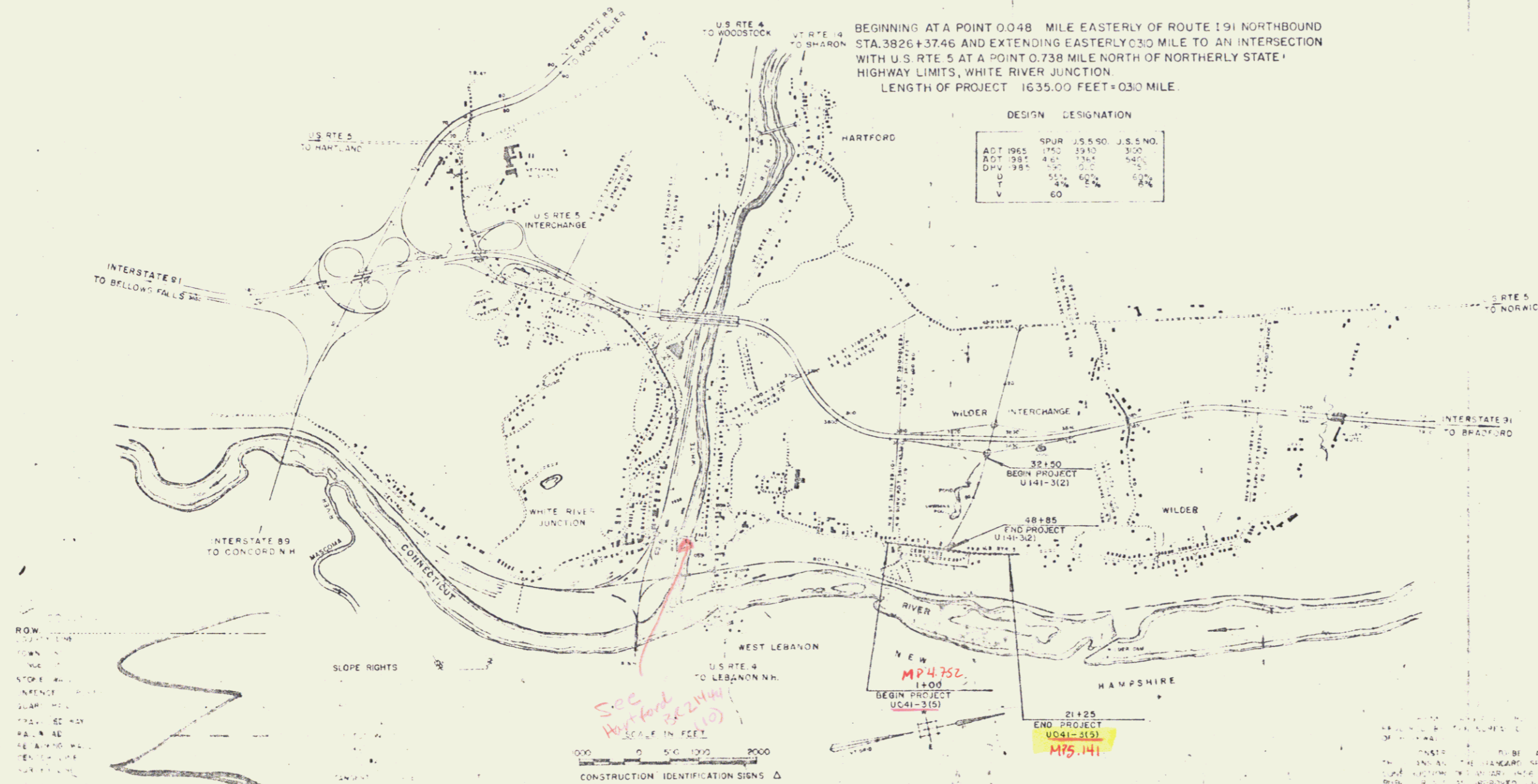
TOWN OF HARTFORD  
COUNTY OF WINDSOR  
U.S. 5-WILDER INTERCHANGE SPUR



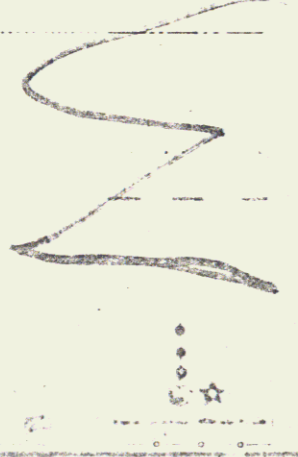
- 1 TITLE SHEET
- 2 TYPICAL SHEET, MAINLINE
- 3 TYPICAL SHEET, U.S. 5 APPROACH
- 4-5 QUANTITY SHEETS
- 6 DRAINAGE SHEET
- 7-8 EARTHWORK SHEETS
- 9-12 PLAN & PROFILE SHEETS
- 13 DETAILS OF U.S. 4 & U.S. 5 INTERSECTION
- 14 ROW DETAIL SHEET
- 15 SOLID ROCK EXCAVATION
- 16 BANKING TABLES
- 17 TYPICAL SLOPE GRADING
- 18 C-1 CURBS
- 19 C-2 ONE-COURSE CEMENT CONCRETE SIDEWALK
- 20 D-2 UNDERDRAIN, HEADWALLS
- 21 D-3 GUTTERS
- 22 D-4 ELBOWS, FLUSHING BASINS
- 23 D-8 DROP INLETS
- 24 D-10 DROP INLET TOPS WITH BITUMINOUS CONCRETE CURB
- 25 D-11 DROP INLET GRATES AND COVERS
- 26 S-LANK
- 27 C-3 THREE-CABLE GUARD RAIL, ANCHORS
- 28 S-LANK
- 29 S-LANK
- 30-35 MAINLINE CROSS SECTIONS
- 36-44 U.S. 5 APPROACH CROSS SECTIONS
- 45-63

BEGINNING AT A POINT 0.048 MILE EASTERLY OF ROUTE 191 NORTHBOUND STA. 3926+37.46 AND EXTENDING EASTERLY 0.30 MILE TO AN INTERSECTION WITH U.S. RTE. 5 AT A POINT 0.738 MILE NORTH OF NORTHERLY STATE HIGHWAY LIMITS, WHITE RIVER JUNCTION.  
LENGTH OF PROJECT 1635.00 FEET = 0.30 MILE

DESIGN	DESIGNATION
ADT 1965	1760
ADT 1981	4400
DIV. 1981	4400
U	4%
T	6%
V	60



- ROW
- TOWN
- STATE
- STREET
- QUARRY
- RAILROAD
- POWER LINE
- WATER
- WELL
- TELEPHONE
- POLE
- HOUSE
- LIMITED ACCESS



SCALE IN FEET  
0 500 1000 2000  
CONSTRUCTION IDENTIFICATION SIGNS Δ

NEW  
MP 4.752  
1+00  
BEGIN PROJECT  
UC41-3(5)

21+25  
END PROJECT  
UC41-3(5)  
M75.141

Plan # 99R918  
STAGE I CONSTRUCTION  
HARTFORD

DEPARTMENT OF COMMERCE  
BUREAU OF PUBLIC ROADS

DATE: 11/20/63	DATE: 1/25/64	DATE: 1/25/64	DATE: 1/29/63	PROJECT: U.S. 5 (41-3(5))
----------------	---------------	---------------	---------------	---------------------------

CONST DRIVES  
 U55 Appr 11+90 LT  
 U55 Appr 3+29 RT  
 U55 Appr 3+30 LT  
 U55 Appr 14+16 RT (Paved)  
 U55 Appr 14+75 RT (Paved)  
 U55 Appr 16+00 RT (Paved)

GRANITE CURB  
 U55 Appr 3+30-14+08 RT  
 U55 Appr 14+24-14+67 RT  
 U55 Appr 14+69-15+93 RT  
 U55 Appr 16+08-16+28 RT  
 U55 Appr 16+68-16+88 RT

TREATED TIMBER CURBING  
 ITEM  
 \* 44+75-47+79 LT  
 \* 46+18-48+74 RT

THREE CABLE GUARD  
 RAIL w STEEL POSTS  
 \* 42+00 - 44+25 RT  
 \* 44+75 - 47+79 LT  
 \* 46+10 - 48+74 RT

CONST COMM DRIVES  
 U55 Appr 16+48 RT (Paved)

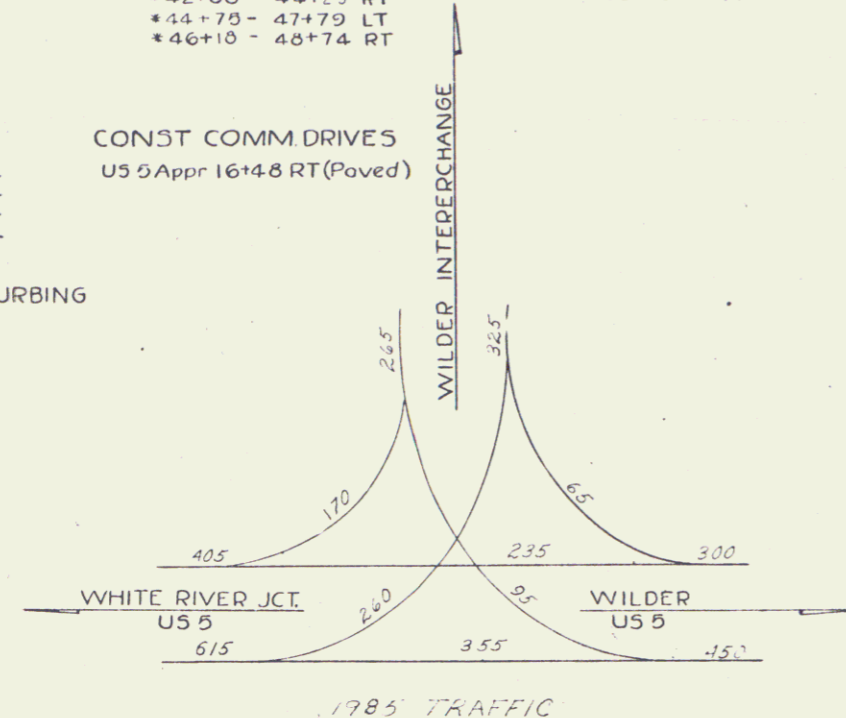
STONE FILL FOR  
 SLOPE PROTECTION  
 42+85-43+75 RT

GRANITE SLOPE EDGING

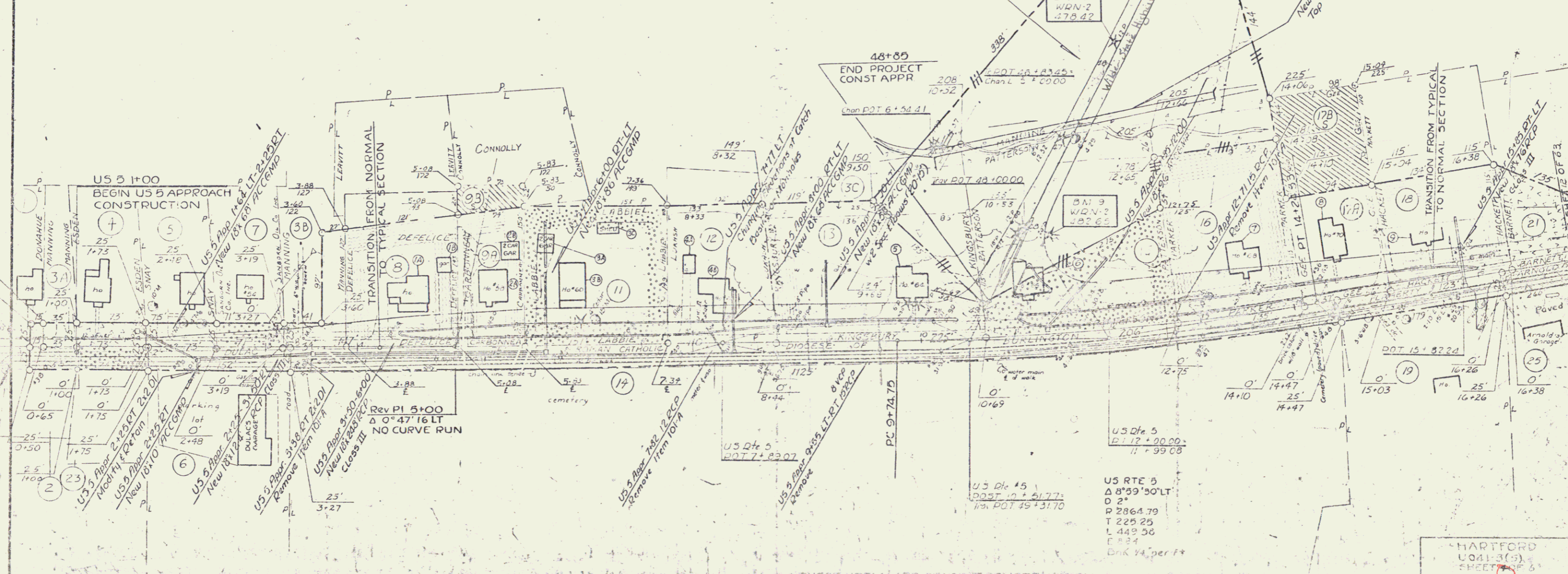
U55 Appr 4+40-10+40 LT (ISLAND)  
 U55 Appr 11+00-16+00 LT (ISLAND)  
 47+85-48+85 (ISLAND)  
 48+35-48+85 (ISLAND)

DEMOLITION & REMOVAL  
 OF BUILDING ITEM 586  
 BLDG NO 1 U55 4+50 LT  
 BLDG NO 2 U55 4+90 LT  
 BLDG NO 3 U55 5+50 LT  
 BLDG NO 4 U55 6+29 LT  
 BLDG NO 5 U55 7+50 LT  
 BLDG NO 6 U55 7+89 LT  
 BLDG NO 7 U55 9+30 LT  
 BLDG NO 8 U55 11+20 LT  
 BLDG NO 9 U55 13+50 LT  
 BLDG NO 10 U55 14+20 LT  
 BLDG NO 11 U55 15+50 LT

5" CONC SIDEWALK  
 U55 APPR 3+30-17+00 RT

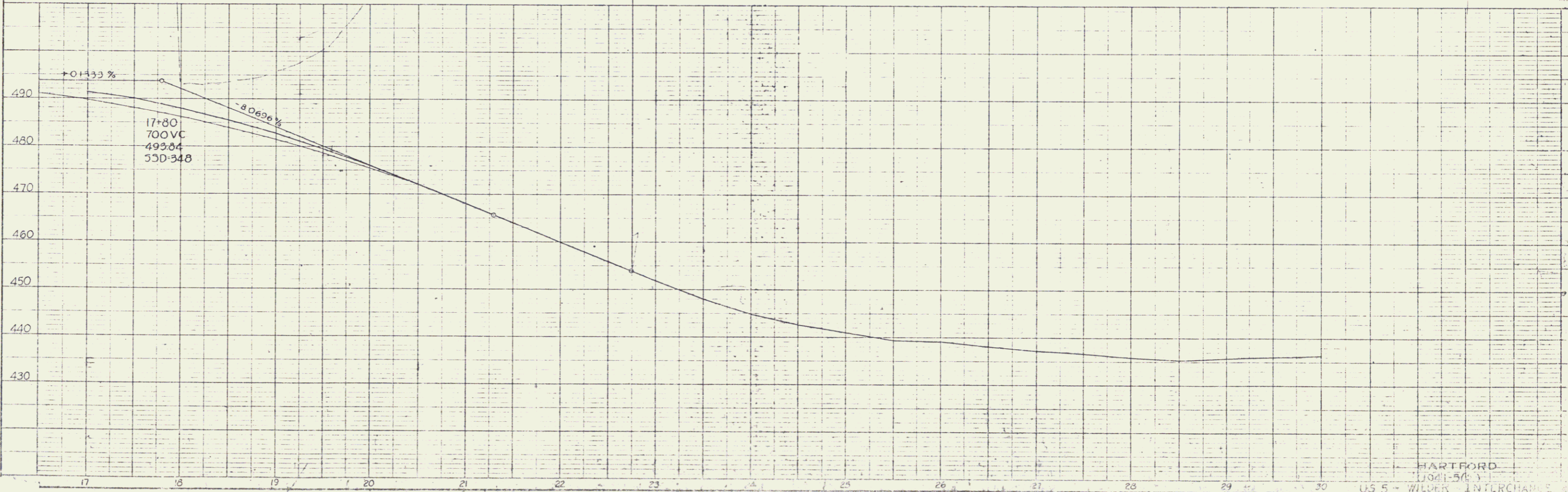
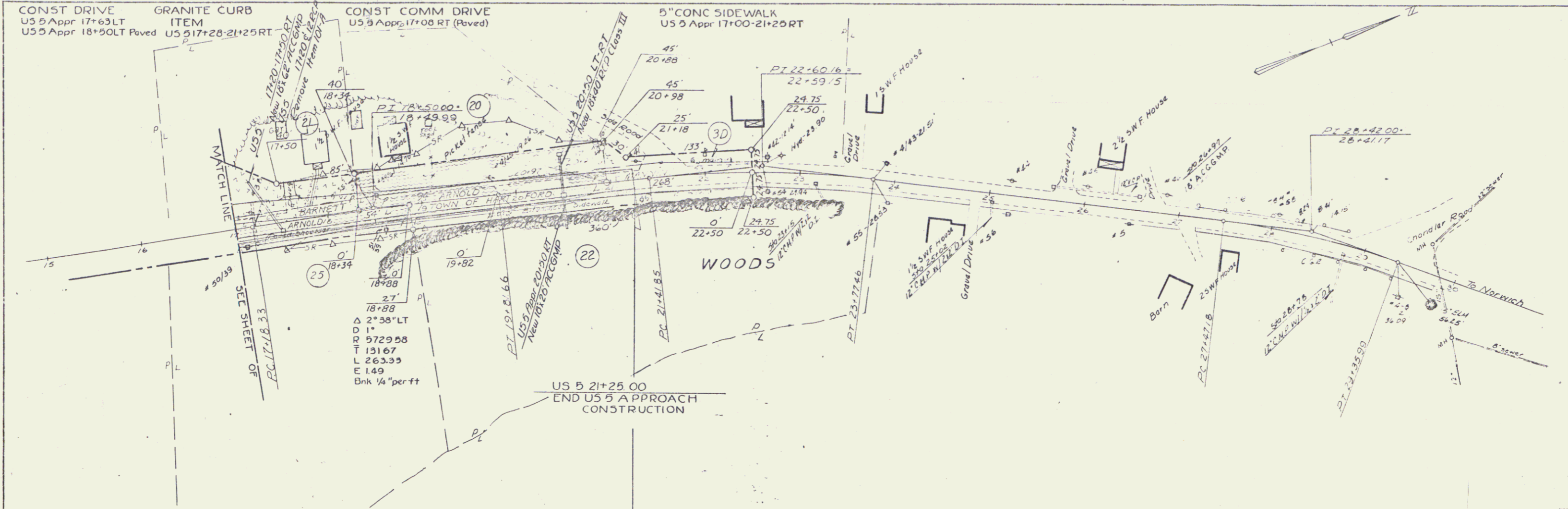


DATE	BY
10/20/83	WJ
11/15/83	WJ
12/15/83	WJ
01/15/84	WJ
02/15/84	WJ
03/15/84	WJ
04/15/84	WJ
05/15/84	WJ
06/15/84	WJ
07/15/84	WJ
08/15/84	WJ
09/15/84	WJ
10/15/84	WJ
11/15/84	WJ
12/15/84	WJ
01/15/85	WJ
02/15/85	WJ
03/15/85	WJ
04/15/85	WJ
05/15/85	WJ
06/15/85	WJ
07/15/85	WJ
08/15/85	WJ
09/15/85	WJ
10/15/85	WJ
11/15/85	WJ
12/15/85	WJ
01/15/86	WJ
02/15/86	WJ
03/15/86	WJ
04/15/86	WJ
05/15/86	WJ
06/15/86	WJ
07/15/86	WJ
08/15/86	WJ
09/15/86	WJ
10/15/86	WJ
11/15/86	WJ
12/15/86	WJ
01/15/87	WJ
02/15/87	WJ
03/15/87	WJ
04/15/87	WJ
05/15/87	WJ
06/15/87	WJ
07/15/87	WJ
08/15/87	WJ
09/15/87	WJ
10/15/87	WJ
11/15/87	WJ
12/15/87	WJ
01/15/88	WJ
02/15/88	WJ
03/15/88	WJ
04/15/88	WJ
05/15/88	WJ
06/15/88	WJ
07/15/88	WJ
08/15/88	WJ
09/15/88	WJ
10/15/88	WJ
11/15/88	WJ
12/15/88	WJ
01/15/89	WJ
02/15/89	WJ
03/15/89	WJ
04/15/89	WJ
05/15/89	WJ
06/15/89	WJ
07/15/89	WJ
08/15/89	WJ
09/15/89	WJ
10/15/89	WJ
11/15/89	WJ
12/15/89	WJ
01/15/90	WJ
02/15/90	WJ
03/15/90	WJ
04/15/90	WJ
05/15/90	WJ
06/15/90	WJ
07/15/90	WJ
08/15/90	WJ
09/15/90	WJ
10/15/90	WJ
11/15/90	WJ
12/15/90	WJ



US RTE 5  
 Δ 8159'50" LT  
 D 2"  
 P 2864.79  
 T 225.25  
 L 449.56  
 E 24  
 DnK 1/4" per Ft

HARTFORD  
 U041-3(3)  
 SHEET 5



PLAN  
 3/62  
 M.B.N.  
 1/4" = 100'

PROFILE  
 3/62  
 M.B.N.  
 1/4" = 100'

HARTFORD  
 1001-501  
 US 5 - WILDER INTERCHANGE  
 SHEET 3 OF 6

23 3