

STATE OF VERMONT  
DEPARTMENT OF HIGHWAYS

PROPOSED IMPROVEMENT

**TOWN OF HARTFORD**  
**COUNTY OF WINDSOR**  
**U.S. ROUTE 5**  
**WINDSOR-NORWICH ROAD**

Project: U 041-2(4)  
Pin # 992917  
9/1/1961



- 1 TITLE SHEET
- 2 ALIGNMENT DATA SHEET
- 3 TYPICAL SHEET
- 4 QUANTITY SHEET
- 5 DRAINAGE SHEET
- 6 EARTHWORK SHEET
- 7 ROAD DETAIL SHEET
- 8-12 PLAN & PROFILE SHEETS
- 13 DETAILS OF U.S.#4-U.S.#5 INTERSECTION
- 14 BLANK
- 15 A-61 SOLID ROCK EXCAVATION
- 16 B-1 BANKING TABLES
- 17 B-5 TYPICAL SLOPE GRADING
- 18 B-10 EMBANKMENT ON A SLOPE
- 19 B-11 METHODS OF SLOPE STABILIZATION
- 20 B-16 ISLAND DESIGNS
- 21 C-1 CURBS
- 22 C-1A CURBS
- 23 C-2A CONCRETE SIDEWALK
- 24 C-2-B CONCRETE SIDEWALK
- 25 D-2 HEADWALLS
- 26 D-3 JUTE MATTING
- 27 BLANK
- 28 D-4 ELBOWS & FLUSHING BASINS
- 29 D-9 DROP INLETS
- 30 D-9 DROP INLET TOPS
- 31 D-10 DROP INLET TOPS
- 32 D-11 DETAILS OF GRATES & COVERS
- 33 D-13 CONCRETE CATCH BASIN OR MANHOLE
- 34 D-16 CAST IRON GRATE - TYPE B
- 35 E-1 BARRICADES, RINGS & LIMITS
- 36 E-11 INTERSTATE ROUTE MARKERS
- 37 E-12 U.S. ROUTE MARKERS
- 38 E-15 REGULATORY SIGNS
- 39 E-16 WARNING SIGNS
- 40 E-18 GUIDE SIGNS
- 41 E-19 STANDARD SIGN PLACEMENT
- 42 E-20 DEVIATORS, HAZARD MARKERS, AND MILEPOSTS
- 43 E-21 GROUND MOUNTED SIGN SUPPORTS
- 44 B-1A-MK
- 45 U-3 FENCE AND CONSTRUCTION IDENTIFICATION SIGNS
- 46 U-3 THREE-CABLE GUARD RAIL, ANCHORS
- 47 U-4 STEEL MARKER POSTS
- 48 J-1 PROJECT & BOUNDARY MARKERS
- 49 BLANK
- 50 TRAFFIC SIGN LOCATION SHEET
- 51 TRAFFIC SIGN AND DELINEATOR SUMMARY SHEET
- 52-53 U.S.#5 CROSS-SECTIONS
- 54-62 U.S.#4 CROSS-SECTIONS (INFORMATIONAL)
- 62 A&B UTILITY CONSTRUCTION SHEETS

FOR RIGHT-OF-WAY DETAILS SEE RIGHT-OF-WAY PLANS FOR THIS PROJECT.

BEGINNING AT A POINT 0.246 MILES WESTERLY OF STATE HIGHWAY LIMITS AND EXTENDING EASTERLY 0.246 MILES  
LENGTH OF ROADWAY 1300.00 FEET = 0.246 MILES  
LENGTH OF PROJECT 1300.00 FEET = 0.246 MILES

DESIGN DESIGNATION

ADT 965	6420	7050
ADT 1385	12720	13400
DIV 385	1815	975
D	54%	5%
T	55%	5%
V	50	

PROJECT NAME & NUMBER	TYPE	PVT. AREA
HARTFORD UO 41-2(4)	BIT. CONC.	5644 SQ.
RECORD PLANS MATERIALS		

BASE OF GRAVEL, 1 1/2" BASE OF SAND, 2" ASPHALT JACKFILL - SMITH/HEUR  
PIT - NO. HARTLAND, VT.  
CONCRETE CURBS - MILLER READY MIX - W. LEBRON, N.H.  
REIN. STEEL - BETHELLEN STEEL CO. - ALBANY, N.Y.  
CATCH BASINS & MANHOLES - W. G. - E. LEBRON POWERTY CO. - BRISTOL, MASS.  
VALVE BOXES - SOUTHEASTERN CONCRETE CO. - BRISTOL, MASS.  
GUARD RAIL, TRAFFIC SIGNS, BOUNDARY MARKERS, SEEUING FERTILIZER, MARKERS - ST. GRIGNOLD CO., INC. - WILLISTON, VT.  
VITRIFIED CLAY PIPE - THE ROBINSON CLAY PRODUCTS CO., AKRON, OHIO.  
BIT. CONC. - L. L. PIKE - W. LEBRON, N.H.  
R.C.P. HOUSE PIPE CO. OF NEW ENGLAND - WINDSOR, VT.

CONTRACTOR - PERINI CORP. - FRAMINGHAM, MASS.  
RESIDENT ENGINEER - A. J. LAMM  
INSPECTOR - D. WALKER, R. MASON, L. BURBANK, B. MOULDER  
RECORD PLANS - F. THORNE

CONTRACT  
DATED - OCT. 27, 1961  
STARTED - NOV. 19, 1961  
COMPLETED - DEC. 7, 1961  
ACCEPTED - DEC. 7, 1961

US 5 73+00 MP 3.467  
END 191-2(2) BEGIN PROJECT  
CONSTRUCTION UO 41-2(4)  
CONSTRUCTION AREA  
US 5 86+00  
END PROJECT  
UO 41-2(4)  
MP 3.714

F.A. URBAN LIMITS

PROJECT UO 41-2(4)  
PERINI CORP. FRAMINGHAM, MASS.  
BIT. CONC. COMPLETED OCT. 7, 1961  
RECORD PLANS - F. THORNE

HARTFORD	UO 41-2(4)	BIT. CONC.
CONTRACTOR	PERINI CORP. FRAMINGHAM, MASS.	
DATE	9/1/1961	
PROJECT	BEGINNING AT A POINT 0.246 MILES WESTERLY OF STATE HIGHWAY LIMITS AND EXTENDING EASTERLY 0.246 MILES	

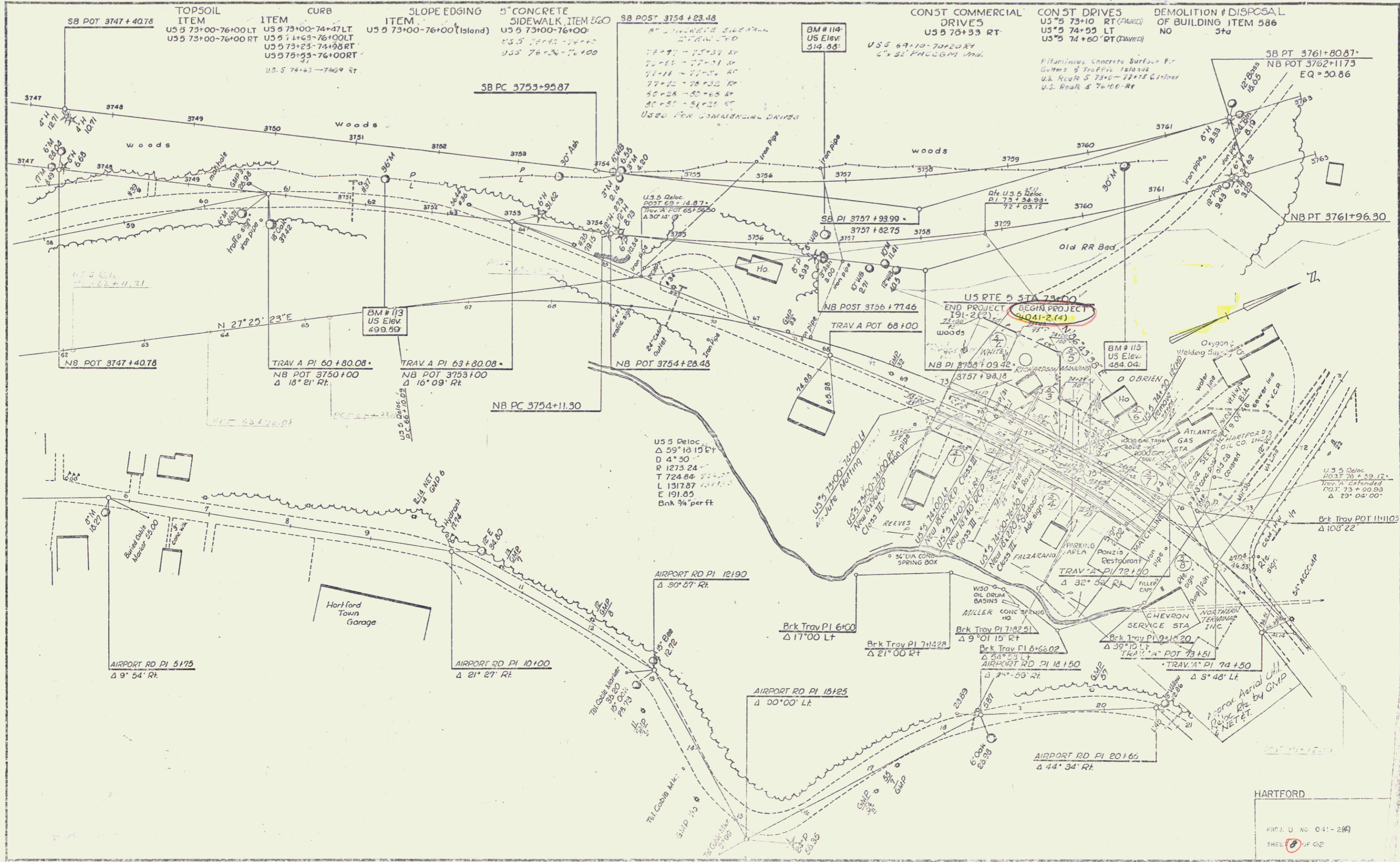
ST. IDENTIFICATION SIGNS

THESE PLANS AND THE STANDARD SPECIFICATIONS FOR HIGHWAY AND BRIDGE, DATED APRIL, 1964, AS APPROVED BY THE BUREAU OF HIGHWAYS, ON OCTOBER 12, 1964, INCLUDING ALL SUBSEQUENT AMENDMENTS, ARE INCORPORATED IN THESE PLANS.

HARTFORD  
STAGE I CONSTRUCTION

*R. H. Crowell*   *E. W. Stebbins*   *L. M. Brown*   *J. S. Chase*   *H. M. Lane*   *A. O. Bishop*

PLAN	NO.	DATE
1	1	11/21/82
2	1	11/21/82
3	1	11/21/82
4	1	11/21/82
5	1	11/21/82
6	1	11/21/82
7	1	11/21/82
8	1	11/21/82
9	1	11/21/82
10	1	11/21/82
11	1	11/21/82
12	1	11/21/82
13	1	11/21/82
14	1	11/21/82
15	1	11/21/82
16	1	11/21/82
17	1	11/21/82
18	1	11/21/82
19	1	11/21/82
20	1	11/21/82
21	1	11/21/82
22	1	11/21/82
23	1	11/21/82
24	1	11/21/82
25	1	11/21/82
26	1	11/21/82
27	1	11/21/82
28	1	11/21/82
29	1	11/21/82
30	1	11/21/82
31	1	11/21/82
32	1	11/21/82
33	1	11/21/82
34	1	11/21/82
35	1	11/21/82
36	1	11/21/82
37	1	11/21/82
38	1	11/21/82
39	1	11/21/82
40	1	11/21/82
41	1	11/21/82
42	1	11/21/82
43	1	11/21/82
44	1	11/21/82
45	1	11/21/82
46	1	11/21/82
47	1	11/21/82
48	1	11/21/82
49	1	11/21/82
50	1	11/21/82
51	1	11/21/82
52	1	11/21/82
53	1	11/21/82
54	1	11/21/82
55	1	11/21/82
56	1	11/21/82
57	1	11/21/82
58	1	11/21/82
59	1	11/21/82
60	1	11/21/82
61	1	11/21/82
62	1	11/21/82
63	1	11/21/82
64	1	11/21/82
65	1	11/21/82
66	1	11/21/82
67	1	11/21/82
68	1	11/21/82
69	1	11/21/82
70	1	11/21/82
71	1	11/21/82
72	1	11/21/82
73	1	11/21/82
74	1	11/21/82
75	1	11/21/82
76	1	11/21/82
77	1	11/21/82
78	1	11/21/82
79	1	11/21/82
80	1	11/21/82
81	1	11/21/82
82	1	11/21/82
83	1	11/21/82
84	1	11/21/82
85	1	11/21/82
86	1	11/21/82
87	1	11/21/82
88	1	11/21/82
89	1	11/21/82
90	1	11/21/82
91	1	11/21/82
92	1	11/21/82
93	1	11/21/82
94	1	11/21/82
95	1	11/21/82
96	1	11/21/82
97	1	11/21/82
98	1	11/21/82
99	1	11/21/82
100	1	11/21/82



HARTFORD  
 PROJ. U. NO. 041-240  
 SHEET 6 OF 62

3a 2

